

CATALOG #	TYPE	
JOB NAME	WATTAGE	VOLTAGE

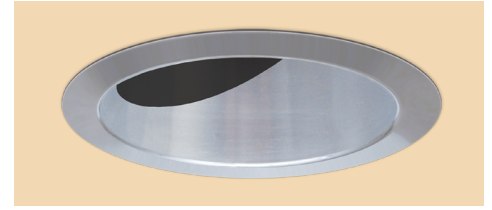
Latitudes Series

Open Appearance 6" Adjustable • LED

Up to 60,000 Hour Rated Life

LM-79 Certified • LM-80 Qualified

LRR-06415



Specifications

Delivered System Performance*

Nominal Lumens: Must Specify

Non-IC

- **-5000L**
- **-3500L**
- **-2500L**
- Select trim & beam distribution: see chart
- Select color (CCT): see chart; 80+ CRI standard; Option -HC for 90+ (15% lumen loss)
- 60,000 Hour Rated Life (L70)

Center Beam Optics

- Self-aligns with trim for optimal performance
- Hot aiming by hand
- Tilts from 0° to 35° and locks in place
- Rotates full 360° and locks in place
- Accommodates sloped ceilings up to 35°

Thermal Protection: SPECIFY VOLTAGE

- Thermal protector for insulation detection per UL/NEC. Must specify input voltage

Thermal Management System

- Aluminum heat sink and components for cool operation, long life, and low maintenance

LED Driver - INTERNAL or REMOTE

- Indoor/Outdoor: -30°C to 60°C (-22°F to 140°F)
- Remote driver in mini cabinet available, see option -REM
- 0-10V CCR 10% dimming standard for internal drivers
- Voltage Options: **Must Specify**
- 120: -120V (50-60Hz); load insensitive
- 277: -277V (50-60Hz); load insensitive

Trim Assembly

- Clear specular aluminum trim
- Self-flanged, low glare cone with lens above
- Optional colors and finishes available

Acrylic Enameled Aluminum Housing

- Rustproof and corrosion resistant: exceeds 1000 hour ASTM 5% salt spray test
- Shallow depth fits restricted plenums
- Cool operation extends component life
- Modular design; visible and fully serviceable through aperture
- Built-in plaster flange

Outlet Box (Galvanized)

- UL Listed, 14GA, insulated, removable cover
- ½" and ¾" knockouts

Installation & Hardware

- Indoor/outdoor in ceilings up to 11/8" thick
- Compatible with fire rated enclosures (by others)
- 27" hanger bars & adjusting brackets (2) supplied

UL, C-UL (Canada)

- Wet, damp or dry locations, covered ceilings
- Through-branch conductors (4 #12 AWG 90°C)

IEC & FCC Compliance

- Meets IEC/EN 60601-1-2 electromagnetic compatibility standard for medical electrical equipment
- FCC Part 15 certified for EMI/RFI emissions

FIVE YEAR Limited Warranty

- Complete standard fixture

Maintenance and Future-Proofing

- M1 maintenance level standard- Phillips head screwdriver, and/or a basic wrench needed
- Lighthead, driver replaceable through the aperture of the fixture with quick-connections, no soldering required
- Backed by Kirlin's [25-Year Legacy Support Guarantee](#)



Available Maintenance Levels

Level	Option	Tools Required to Service LED Module and Driver
	Standard	<ul style="list-style-type: none"> • Phillips head screwdriver, and/or a basic wrench needed

Options and Ordering Configuration

(Example: LRR-06415-2500L-120-MFL-35K-30T-RH-NAT)

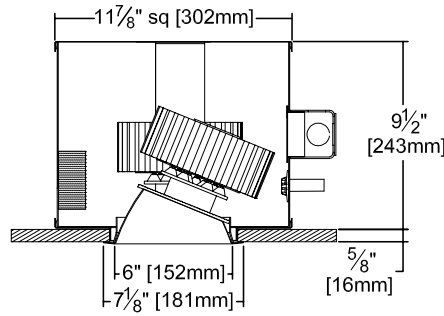
Must Specify					Optional			
Model	Lumens	Volts	Beam	CCT [†] & CRI	Driver Options	Emergency Options	Trim Options	Other Options
LRR-06415	-5000L -3500L -2500L	-120 -277 -97 [†] : Other Voltage	(Blank): NFL -SPT -NFL -MFL	(Blank): 3500K, 80+ CRI 80+ CRI* -27K: 2700°K -30K: 3000°K -35K: 3500°K -41K: 4000°K -50K: 5000°K *Note: Lumen Factor = 0.93 for -27K 90+ CRI** -27K-HC: 2700°K -30K-HC: 3000°K -35K-HC: 3500°K -41K-HC: 4000°K -50K-HC: 5000°K **Note: Lumen Factor = 0.79 for -27K-HC; All Others = 0.85; Consult Factory	(Blank): Standard 0-10V CCR 10% dim -D1: 0-10V 1.0% dim -D2: 0-10V 0.1% dim -D3: DALI 1.0% dim -D4: DALI 100-0.1% dim -D5: DMX512A 0% dimming instead for -3500L or -2500L only -D40: -40°C (-40°F) driver; 0-10V 10% dim -ECO: Digital driver for Lutron EcoSystem controls. Dims to 1% or consult factory; -3500L max -REM: Driver remote mounted in mini- cabinet; see remote driver ordering page for more details - MUST BE ORDERED SEPARATELY	(Blank): None -EI: Remote emergency inverter for 50% of rated lumens for -5000L or -3500L. Not available for -2500L. Run time: 90+ minutes. 120 or 277V, 60Hz input only. Specify voltage. Not for use with Option -FS -EM: Internal emergency battery pack; Delivers 500 lumens; Run time: 90+ minutes -ERH: Remote emergency battery pack; Delivers 1000 lumens; CEC Compliant; Run time: 90+ minutes	(Blank): Standard clear specular trim; low glare cone with lens above Trim Finishes -30F: White enamel (flange only) -30T: White enamel (complete trim) -35F: Silver enamel (flange only) -35T: Silver enamel (complete trim) -37F: Dark bronze enamel (flange only) -37T: Dark bronze enamel (complete trim) -38F: Black enamel (flange only) -38T: Black enamel (complete trim) -70T: Clear semi-specular SofTex™ (complete trim) -94: Custom color; consult factory Other Trim Features -32: White trim extender, specify OD -45: Gasket between trim & ceiling -WA: White acrylic lens	(Blank): None Mounting -RH: Joist mounting hardware instead Other Options -99: Special modification; consult factory -AWN: Athena Wireless Node; N/A for Dimming Options -D5, -D40, -ECO -FS: Fused primary; One per fixture; N/A for option -EI -SH: Sealed housing and junction box -TA: Top access for servicing from above ceiling *Note: For other integrated control solutions, such as nLight, contact factory

†Consult
factory

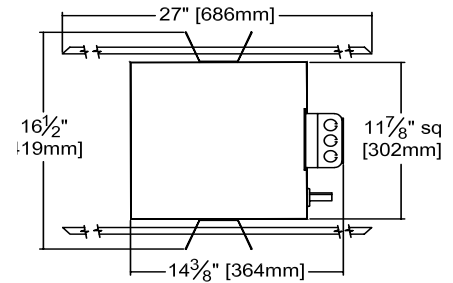
Performance Factors

NOMINAL LUMENS	LUMEN FACTOR	NOMINAL WATTS	LPW FACTOR
-5000L	1.00	57.2	1.00
-3500L	0.80	42.7	1.08
-2500L	0.62	35.2	1.01

Dimensions



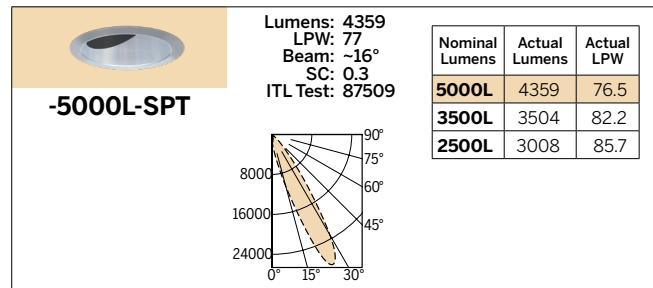
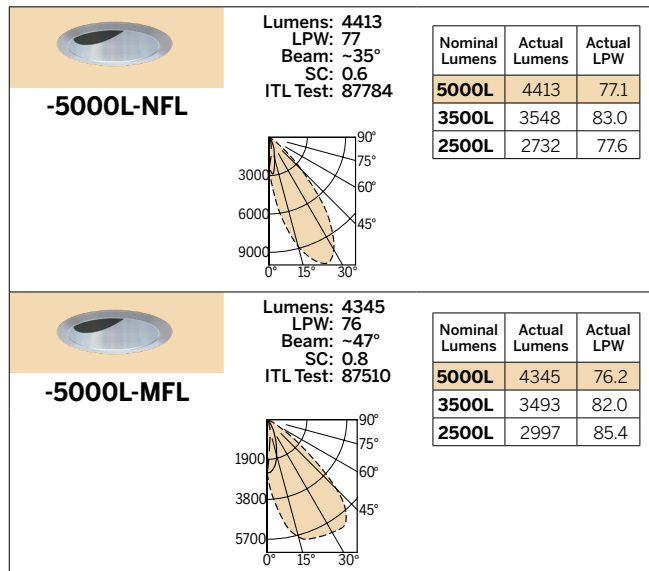
Ceiling Cut-out
6½" Dia.



* See notes on page 1 for additional info on Lumen Factors

Photometry - Installed Complete Fixture

LM-79 IES Certified Photometry from Independent Lab



LED manufacturers maintain a tolerance of +/-7% on flux (lumens) and power (electrical) measurements.

▲ **Cone of Light Key** **Dist.** Distance (Ft.) from fixture
 Dia. (in ft.) shown is where **FC** Footcandles at nadir (0°)
 value is half the FC at nadir. **Dia.** Circle of light at 50% of FC

LIMITED WARRANTY: CATALOGED KIRLIN FIXTURES ARE WARRANTED FREE OF DEFECTS IN WORKMANSHIP OR MATERIAL FOR FIVE YEARS FROM DATE OF PURCHASE. INSTALLED TO N.E.C. / IN-NORMAL USE. Manufacturer at the option will replace or repair such fixture or refund the purchase price on presentation of proof of purchase and defective fixture at the office of manufacturer within the warranty period. Liability of manufacturer is limited to the foregoing and manufacturer shall not be liable for any other damages, direct or indirect, sustained or suffered by purchaser or any person. This warranty is applied to the buyer in place of all other warranties, expressed or implied. Seller does not warrant as to merchantability or fitness for a particular use, nor will any oral statement constitute a warranty or amend this specific warranty. Abnormal use, abuse of the fixture, improper installation, or repair or modification of the fixture without prior written authorization from the manufacturer will render the warranty void.

Static White Options and Ordering Configuration

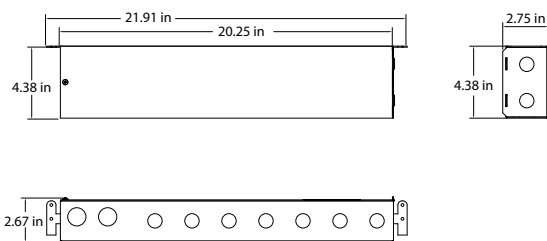
(Example: REM-SWCAB-1400B-2-D2-EMI)

Must Specify				Optional
Model	Driver Current	Driver Count	Dimming	Other Options
REM-SWCAB				
	50 Watt Drivers -1050A: 1050mA 50W driver; powers (1) 3500L fixture -1400A: 1400mA 50W driver; powers (1) 2500L fixture 75 Watt Drivers -1400B: 1400mA 75W driver; powers up to (2) 2500L fixtures OR (1) 5000L fixture 100 Watt Drivers -1050C: 1050mA 100W driver; powers up to (2) 3500L fixtures	-1: 1 driver -2: 2 drivers; N/A on -1050C driver option	-D1: 0-10V 1.0% dim -D2: 0-10V 0.1% dim -D3: DALI 1.0% dim -D4: DALI 100-0.1% dim -D5: DMX512A 0% dimming instead; only available with -1050A option -ECO: Digital driver for Lutron EcoSystem controls. Dims to 1% or consult factory; -3500L max	(Blank): None -E15: Remote emergency micro-inverter: 50W max load; 90+ minutes run time -EMI: Remote emergency mini-inverter: 125W max load; 90+ minutes run time

Lumens	Remote Mini-Cabinet	Driver Wattage	Maximum Capacity	
			1 Driver in -REM Cabinet	2 Drivers in -REM Cabinet
-2500L	REM-SWCAB-1400A	50W	Qty 1: 2500L Luminaire	Qty 2: 2500L Luminaires, (1 per driver)
	REM-SWCAB-1400B	75W	Qty 2: 2500L Luminaires, wired in series	N/A
-3500L	REM-SWCAB-1050A	50W	Qty 1: 3500L Luminaire	Qty 2: 3500L Luminaires (1 per driver)
	REM-SWCAB-1050C*	100W	Qty 2: 3500L Luminaires, 1 per LED output	N/A
-5000L	REM-SWCAB-1400B	75W	Qty 1: 5000L Luminaire	Qty 2: 5000L Luminaires (1 per driver)

* 100W XXXXC remote drivers have 2 LED outputs each

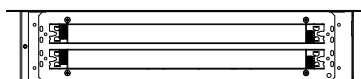
Dimensions



-REM Features

- Drivers can be mounted up to 250' away from fixtures
- Remote mini-cabinets are plenum rated and can be mounted to the ceiling grid
- Low-voltage cabling from driver to fixture(s)
- 1/2" and 3/4" knockouts

50W and 75W Drivers Exact dimensions of drivers inside the box may vary based on options chosen.



100W Drivers

