



Installation Guide/Owner's Manual

Empower DMX Wall Controller

Technical Support: 313-259-6400, Press 5

1.0	Owner/User Responsibility	2
2.0	Safety & Important Information	2
3.0	Standards & Compliance	2
4.0	Electrical Requirements	3
5.0	Before You Begin	3
6.0	Junction Box	4
7.0	Wiring	4
8.0	Wall Controller Installation	5
9.0	Control Operation	5
10.0	User Notes	6



INSTALLATION GUIDE/OWNER'S MANUAL

1.0 OWNER/USER RESPONSIBILITY

It is the responsibility of the contractor, installer, buyer, owner and user to install, maintain, and operate this controller in accordance with all applicable laws, regulations and local electrical safety authority requirements.

This product is only to be installed by a qualified electrician.

IMPORTANT!

Thoroughly read the entire instructions guide and warnings before beginning installation. The instructions provided are intended to assist in the installation and service of the corresponding product. Failure to follow the instructions may result in product malfunction, damage, injury or death. Contact your Kirlin service representative for replacement parts and procedures.

2.0 SAFETY & IMPORTANT INFORMATION



Risk of fire or electric shock. Ensure all power is disconnected during installation process. Refer to wiring diagrams to prevent damages and malfunctions.



This controller may only be connected and installed by a qualified electrician. This controller requires knowledge of controllers and electrical systems. If not qualified, do not attempt installation or maintenance. All applicable regulations, legislation, and building codes must be observed.



Connecting fixtures with power **ON** will “hot plug” the LEDs and cause damage.



To prevent wiring damage or abrasion, do not expose wiring to edges metal or other sharp objects.

3.0 STANDARDS & COMPLIANCE

ETL Listed	
Restriction of hazardous substances	RoHS Compliant

4.0 ELECTRICAL REQUIREMENTS

Nominal input voltage range AC	5-12VDC to 120V power supply (included)
Maximum wattage	XXW

5.0 BEFORE YOU BEGIN

Before You Begin

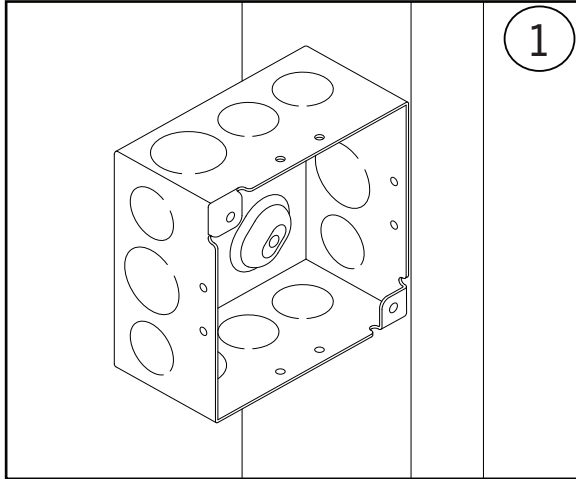
- Shut **OFF** power at fuse box or circuit breaker before installation, inspection or removal.
- To reduce the risk of fire or electric shock, **NEVER** interconnect or short output terminations.

Environmental Conditions

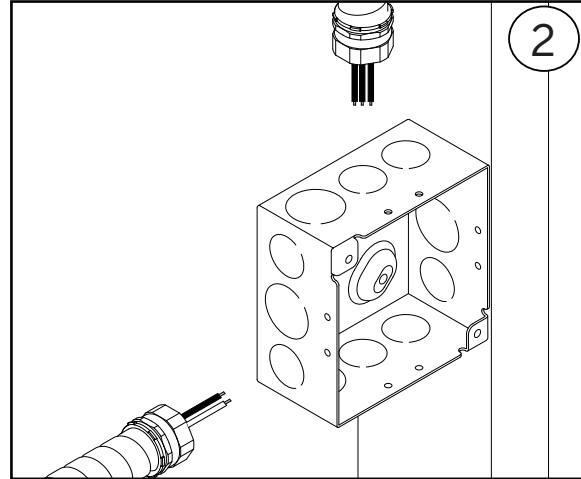
Controller operating ambient temperature (Ta) range	0°C to +50°C
Controller	Dry listed

INSTALLATION GUIDE/OWNER'S MANUAL

6.0 JUNCTION BOX INSTALLATION

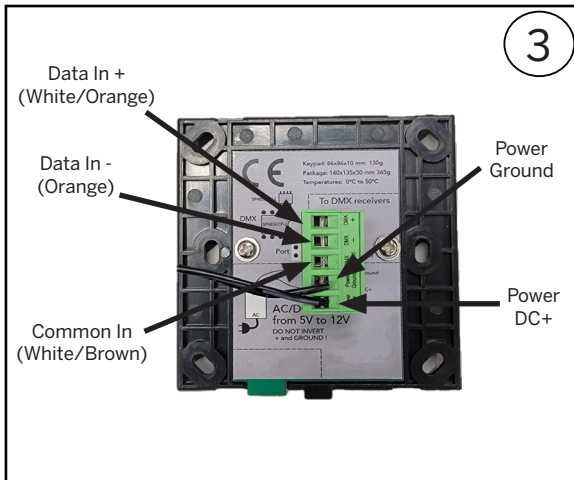


Install 4" square junction box (supplied by others, ex. RACO 232) to stud.



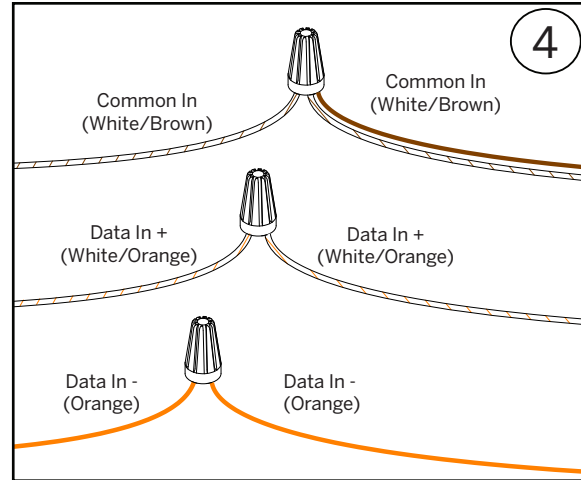
Connect conduit to junction box.

7.0 WIRING INSTALLATION



A. Connect incoming power to supplied power supply, ensuring not to invert the ground and positive wires.

B. Connect Data In (+), Data In (-), and Common In wires to controller terminal block.

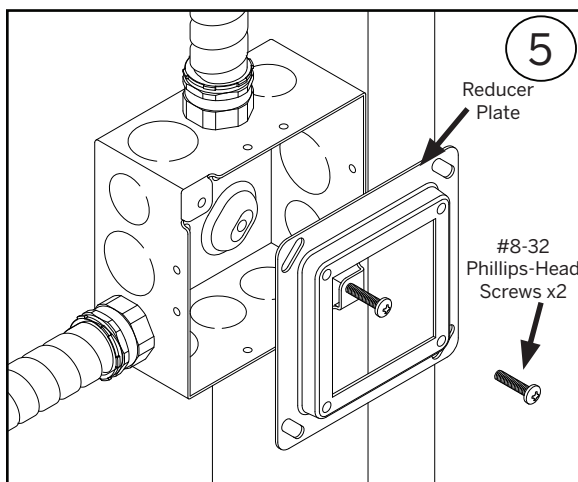


Connect driver DMX wires to controller using wire nuts.

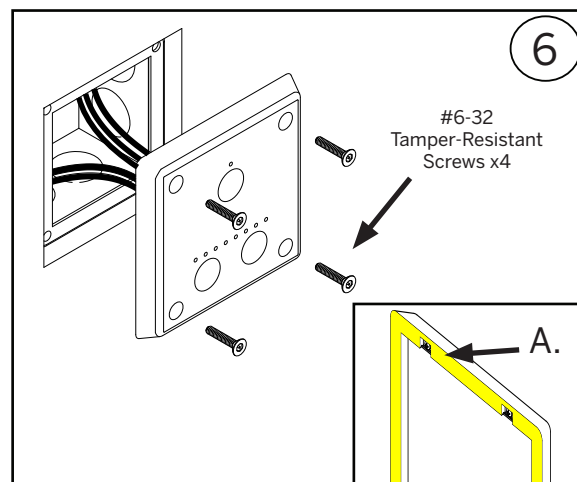
DMX Wiring

Driver	Controller
Common In (White/Brown)	Common In (White/Brown) Common Out (Brown)
Data In + (White/Orange)	Data In + (White/Orange)
Data In - (Orange)	Data In - (Orange)

8.0 WALL CONTROLLER INSTALLATION

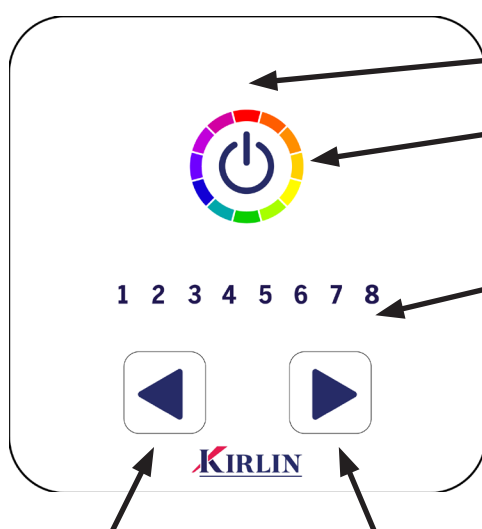


Mount supplied reducer plate to junction box using #8-32 Phillips-head screws x2 (supplied by others).



- A. Install drywall with 3.25" square cutout for reducer plate.
- B. If using anti-pick caulking, apply to back of supplied controller, as shown (surface A).
- C. After wiring, secure controller to reducer plate using supplied #6-32 tamper-resistant hex-head screws x4. Ensure controller sits flush against wall and wipe off any excess caulking.

9.0 CONTROL OPERATIONS



ON/OFF Indicator (Blue LED)

ON/OFF Touch Switch

Scene Indicators:

Scene 1-8: Standard/Custom colors (Blue LED indicators)

Scene 9+: Additional scenes can be ordered (not indicated).

Consult factory for custom scenes/colors.

Previous Scene
Touch Switch

Next Scene
Touch Switch

10.0 USER NOTES