



## **Architectural Luminaires with Remote-Mounted DMX or 0-10V Power Supplies**

*For Performance Spaces & High Ceilings*

[www.kirlinlighting.com](http://www.kirlinlighting.com)



# Lighting Demands Are Higher Than Ever

High ceilings, extreme environments, and limited access call for more than just standard solutions.

In spaces like performing arts centers, atriums, and houses of worship, lighting systems are expected to deliver consistent performance from mounting points that can be 30 feet or higher, often directly over permanent seating or other obstacles. These environments leave no room for error and little opportunity for maintenance. Designers and facility teams need lighting that's powerful, reliable, and built to last, with excellent color rendering and seamless dimming for performances, presentations, or quiet moments of reflection. But above all, they need a system that works — every time.



## The Symphony Solution

Remote-mounted drivers. Precision optics. Versatile fixtures. Built for the real-world challenges of large venues.

Kirlin's Symphony system was designed specifically for these demanding applications, pairing high-output LED fixtures with conveniently located DMX or 0-10V drivers housed away from the ceiling. That means easier installation, cooler fixtures, and minimal disruption when service is needed. With a wide range of recessed, surface, and wall-mounted luminaires — and advanced dim-to-black capabilities — Symphony delivers both the power and the control required for modern performance spaces. Use Kirlin's Symphony Configurator to streamline planning and specify exactly what your project needs, from cabinet count to connection details.



# Rethink the Role of the Driver

In large venues, accessibility and serviceability matter just as much as performance.



The driver is a critical component in the lifespan of any LED lighting system — and where it's located can make all the difference. In high-ceilinged environments, placing the driver inside each fixture often leads to costly and complicated maintenance.

- Fixtures are difficult to reach for service
- Individual DMX drivers add significant cost
- Dual wiring for both power and control increases labor and material needs

Kirlin's Symphony system relocates the driver outside the ceiling — making access easier, maintenance faster, and total system cost more efficient.

## Why Choose Symphony?

Engineered for performance. Designed for the real world.

### Smart System Design

#### Remote-Mounted Drivers

Install drivers in serviceable locations — no lifts needed

#### Cooler Driver Operation

Extended driver life by removing it from the fixture

#### Broad Fixture Family

Recessed, surface, wall-mounted, round, and square options

#### Lumen & Beam Flexibility

Multiple output levels and beam spreads for precise results

#### Lower Installed Cost

Fewer drivers and Class II low-voltage wiring reduces system costs

### Advanced Performance

#### DMX & 0-10V Control

Choose the protocol that fits your control system and needs

#### Smooth Dim-to-Black

Theatrical-quality dimming comes standard

#### Flicker-Free Video Compatibility

Perfect for venues with recording or broadcast needs

#### Individual Fixture Addressing

Control what each luminaire does — and when

#### Quick Maintenance

Serviceable drivers reduce downtime and disruption

## Plan with Confidence

Use Kirlin's Symphony Configurator to determine how many drivers and cabinets your project needs.

Get started at [kirlinlighting.com/symphony-configurator](http://kirlinlighting.com/symphony-configurator):

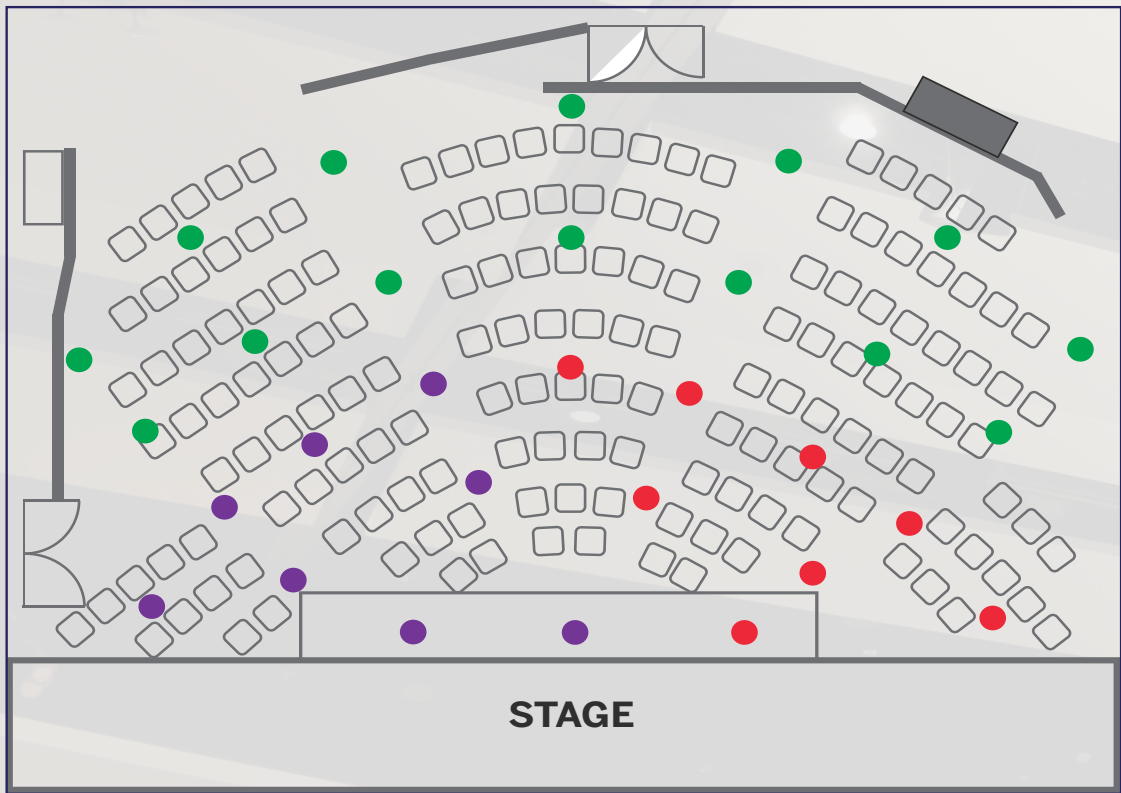





St. Mary of Vernon



# Lighting System

Typical Layout Design Guide



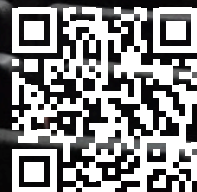
Symphony DMX Power Supply	RDM-Programmed Channel Addresses	Corresponding Channel Number (Circuit)	Fixtures
 SYM-DMXPS-8	001, 002, 003, 004, 005, 006, 007, 008	1, 2, 3, 4, 5, 6, 7, 8	8 x <b>SRR-06602-4000L</b>
 SYM-DMXPS-8	009, 010, 011, 012, 013, 014, 015, 016	1, 2, 3, 4, 5, 6, 7, 8	8 x <b>SRR-06602-4000L</b>
 SYM-DMXPS-7	017, 018, 019, 020, 021, 022, 023	1, 2, 3, 4, 5, 6, 7	14 x <b>SRR-06115-1500L</b>



## The Kirlin Difference

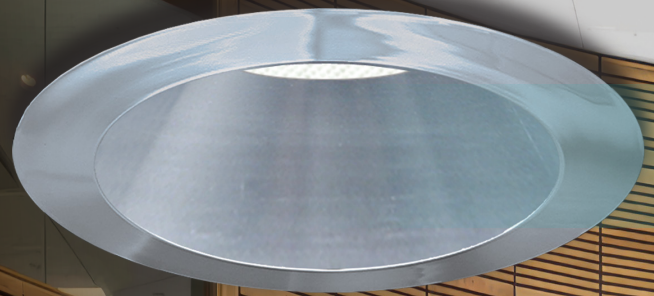
**Built to perform. Designed to impress.  
Backed by 130 years of lighting expertise.**

Every Symphony luminaire is engineered to meet Kirlin's rigorous standards for quality, performance, and durability — a legacy we've upheld since 1895. Housings are constructed from corrosion-resistant, rust-proof aluminum for optimal thermal management and long system life. A wide range of trim finishes, optical distributions, lumen outputs, and color temperatures gives lighting designers the flexibility to meet both aesthetic and performance goals, even in the most demanding spaces.

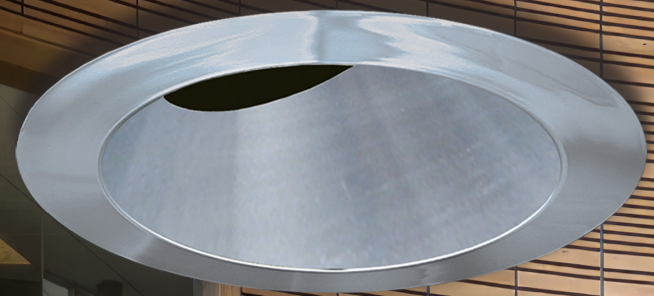




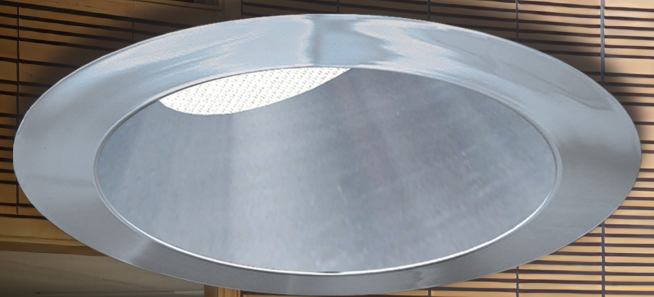
# RECESSED ROUND LUMINAIRES



Downlights



Adjustable



Wall Wash

## Versatile Performance from Above

Downlights, adjustables, and wall washes built for high ceilings.

Kirlin's recessed round luminaires in the Symphony series offer precision and flexibility for large-scale environments. Available in downlight, adjustable, and wall wash configurations, these fixtures deliver powerful output ranging from 1,500 to 6,500 lumens, making them ideal for high ceilings and complex lighting layouts. Whether highlighting architectural elements, creating focal points, or providing general illumination, these luminaires combine performance with clean, modern aesthetics to support a wide range of lighting goals.

105 Eisenhower



RECESSED ROUND LUMINAIRES



# RECESSED SQUARE LUMINAIRES

## Clean Lines, Powerful Output

Square apertures for modern design flexibility.

Symphony's recessed square luminaires offer a bold, architectural alternative to traditional round fixtures, without sacrificing performance. Available in 4" and 6" sizes, with downlight, adjustable, and wall wash options, these luminaires deliver between 1,500 and 6,500 lumens to meet the demands of high-ceilinged spaces. Whether used to echo geometric design elements or provide crisp, even illumination, Kirlin's square fixtures bring both form and function to the forefront of your lighting plan.



Downlights

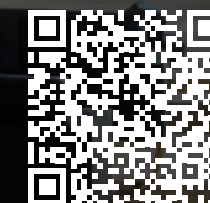


Adjustable



Wall Wash

*Pinnacle at Symphony Place*



RECESSED SQUARE  
LUMINAIRES

For additional details, see submittals at [www.kirlinlighting.com](http://www.kirlinlighting.com).



## Cylindrical Style Meets Symphony Performance

Open Appearance  
Cylinder Downlights

Open Appearance  
Direct-Indirect Cylinders

Super Shallow Lensed  
Cylinder Downlights

### For ceilings high, low, and everything in between

Symphony's round cylinder luminaires offer a clean, modern look with versatile mounting options to suit any space. Available in surface, pendant, cable-hung, and wall-mounted configurations, plus sloped ceiling adaptors, these fixtures are designed to perform wherever you need them. Choose from a wide range of lumen packages and sizes, with open or lensed designs to fit your project's needs. For low-ceiling areas, a super-shallow version delivers Symphony-level performance without compromise.

*Aiken High School*



SURFACE ROUND  
LUMINAIRES



# SURFACE SQUARE LUMINAIRES

## Bold Geometry, Flexible Mounting, and Powerful Output

### All in the Symphony family

Kirlin's square cylinder luminaires bring a sharp, architectural edge to the Symphony series, with options for surface, pendant, cable, and wall mounting, plus adaptors for sloped ceilings. Available in lumen packages from 2,500 to 6,500, these fixtures are well-suited for high-ceilinged spaces and design-forward environments alike. Choose between direct or direct/indirect distributions to shape light exactly where it's needed while maintaining a cohesive aesthetic throughout the space.

Open Appearance  
Surface Square  
Downlight

Open Appearance  
Wall-Mounted  
Direct-Indirect

Dyer-Kelly Elementary School



SURFACE SQUARE  
LUMINAIRES





Driver modules  
mounted inside cabinet

## DMX Power Supply System

Flexible, reliable control — powering high-performance lighting with precision.

- Supports a range of fixture outputs
- Best-in-class dim-to-black theatrical dimming
- Configurable via RDM for simple setup and system adjustments
- Specifiable capacity: 1 to 8 DMX channels per cabinet
- Mounts in any convenient, serviceable location — up to 250 ft from fixtures
- Backed by a 5-year Kirlin warranty

Light Description	LED Channel Module	
	1400mA	1050mA
-1500L Luminaire	Up to 2 fixtures in series per channel	
-2500L Luminaire	1 fixture per channel	
-4000L Luminaire	1 fixture per channel	
-5000L Luminaire	2 channels per fixture	
-6500L Luminaire	2 channels per fixture	



Need help calculating how many drivers or channels?  
Scan to use the Symphony Configurator. Scan to use the Symphony Configurator  
at [kirlinlighting.com/symphony-configurator](http://kirlinlighting.com/symphony-configurator):

## 0-10V Driver Cabinet System

Modular, serviceable, and built to perform — 0-10V dimming made simple.

- Supports a range of fixture outputs
- Best-in-class dim-to-black theatrical dimming with 0-10V control
- Modular system with drivers ordered individually for tailored system design
- Installs in any convenient, serviceable location — up to 250 ft from fixtures
- Backed by a 5-year Kirlin warranty

Light Description	LED Channel Module		
	DVR-1400A	DVR-1050A	DVR-1400B
-1500L Luminaire	Up to 2 fixtures in series per driver		Up to 3 fixtures in series per driver
-2500L Luminaire	1 fixture per channel		Up to 2 fixtures in series per driver
-4000L Luminaire	1 fixture per channel		
-5000L Luminaire	2 channels per fixture		1 channels per fixture
-6500L Luminaire	2 channels per fixture		



Need help calculating how many drivers or channels?  
Scan to use the Symphony Configurator. Scan to use the Symphony Configurator  
at [kirlinlighting.com/symphony-configurator](http://kirlinlighting.com/symphony-configurator):



*Front Cover:  
Bethlehem High School*

