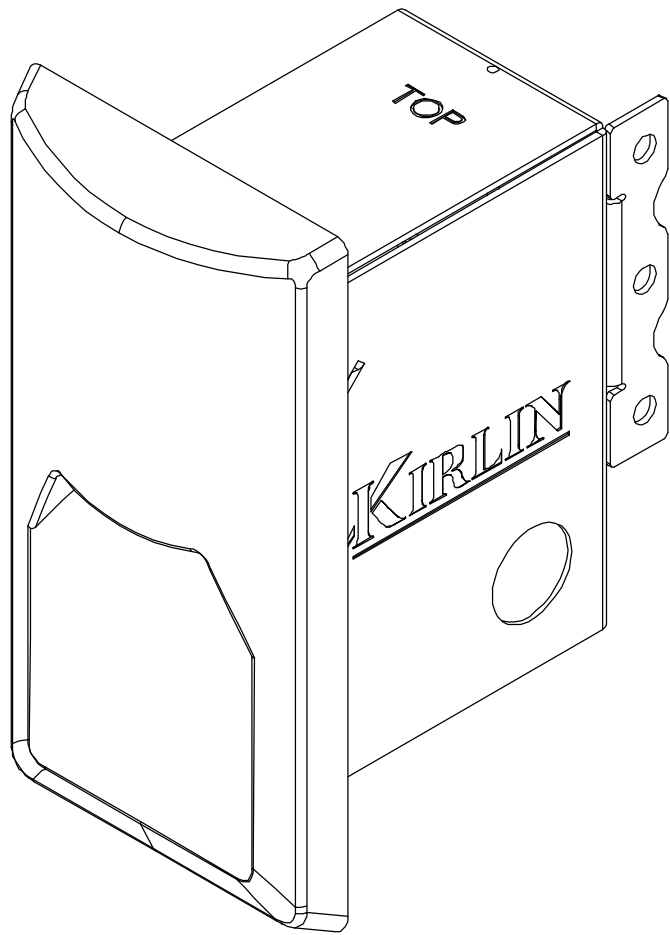
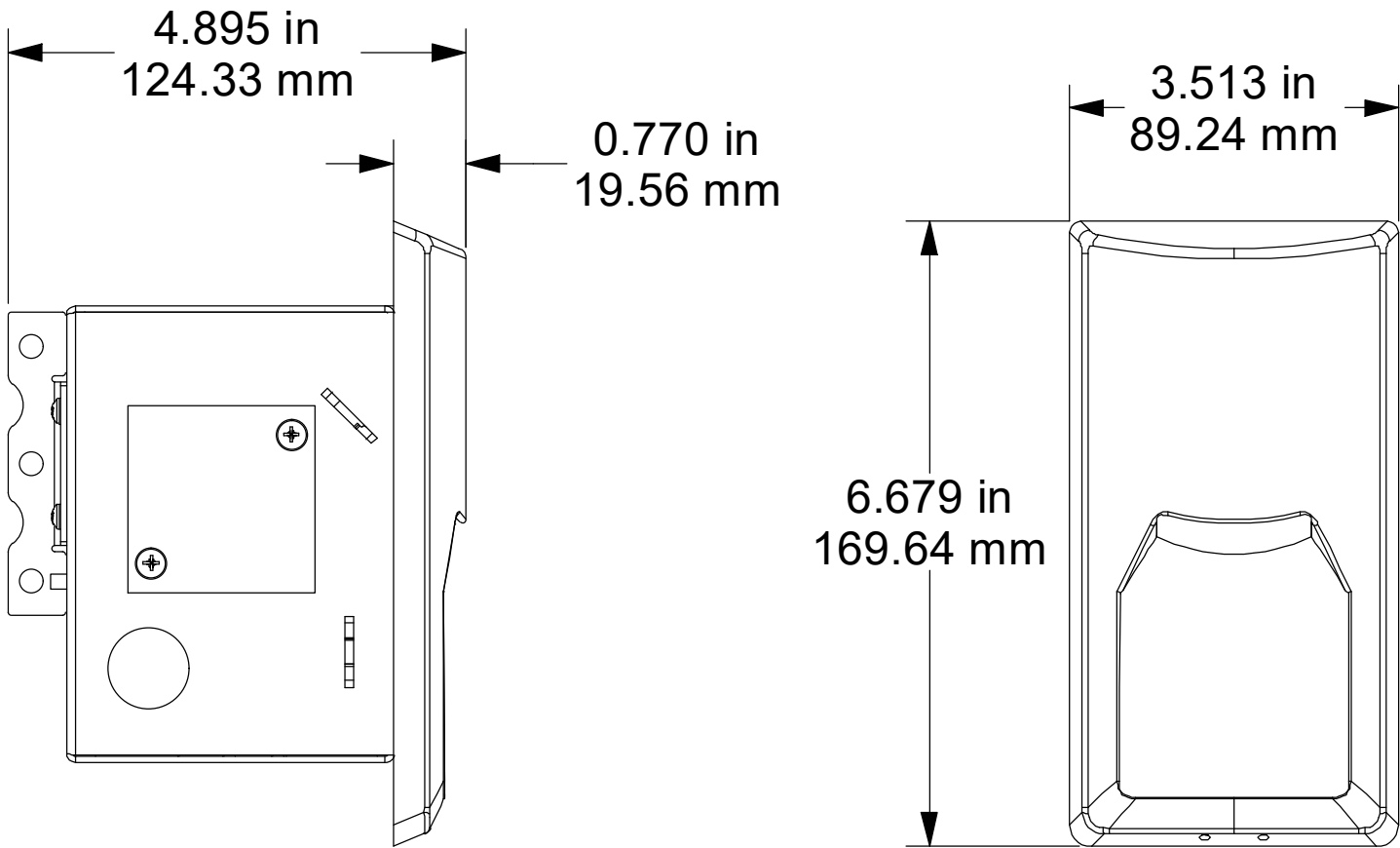
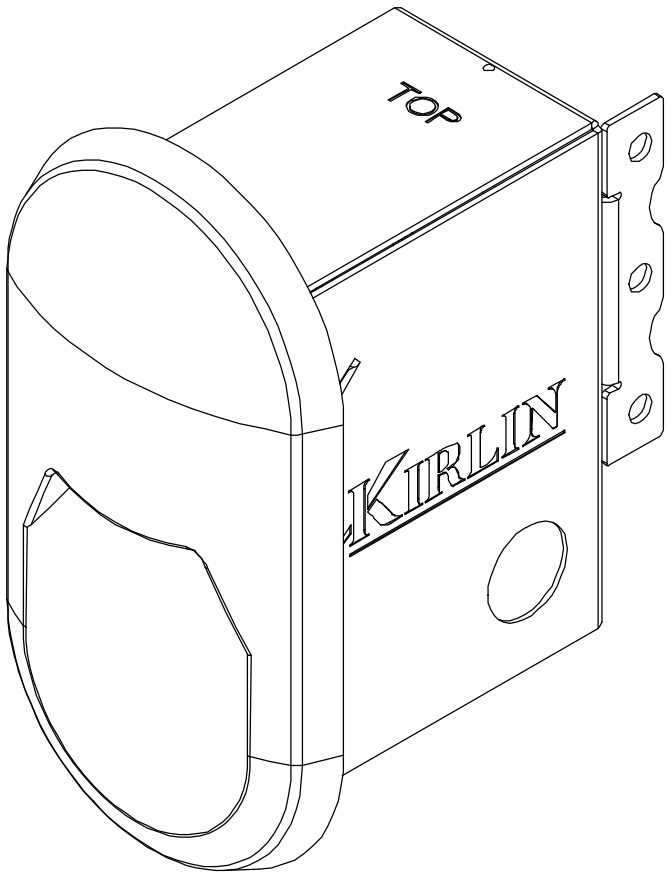
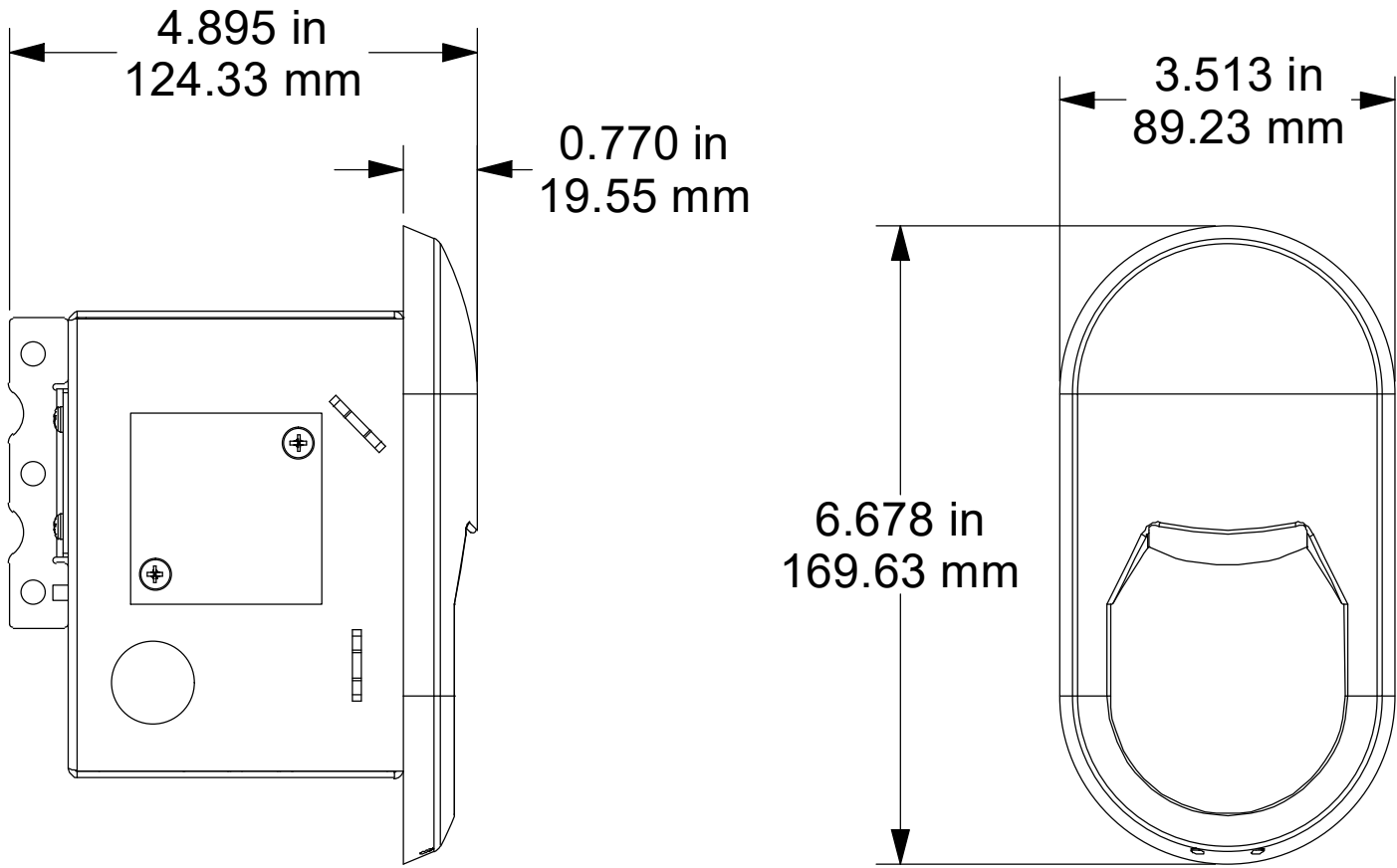


REVISION HISTORY				
ECN	REV	DATE	REVISION DESCRIPTION	BY
X	1	12/2/2022	RELEASE FOR PRODUCTION	TMACK



NOTES: UNLESS SPECIFIED OTHERWISE
 1. PART LABEL: PART NUMBER / MFG DATE
 2. UL FINISHED GOODS LABEL
 3. INSPECTION
 4. GROUND RESISTANCE 0.1 TO 1.0 ohm

DO NOT SCALE DRAWING
 WORK TO DIMENSIONS ONLY

ALL DIMENSIONS ARE IN INCHES
 UNLESS OTHERWISE NOTED

ALL ANGLE TOLERANCES ARE $\pm 1^\circ$
 UNLESS OTHERWISE SPECIFIED

TOLERANCES
UNLESS
OTHERWISE
SPECIFIED

DECIMALS:
0.00 = $\pm .020$
0.000 = $\pm .010$

RADII:
.031 TYP.

THE KIRLIN COMPANY

3401 EAST JEFFERSON AVE
DETROIT, MICHIGAN 48207
PHONE: 313-259-6400
FAX: 313-259-3121

TITLE:

HITSVILLE TASK ASSEMBLY

MATERIAL:

SEE NOTES

FINISH:

SEE NOTES

DRAWN BY:

DATE:

CHK'D BY:

APPRV'D BY:

PART NO.

MTT-03TSK

SHT

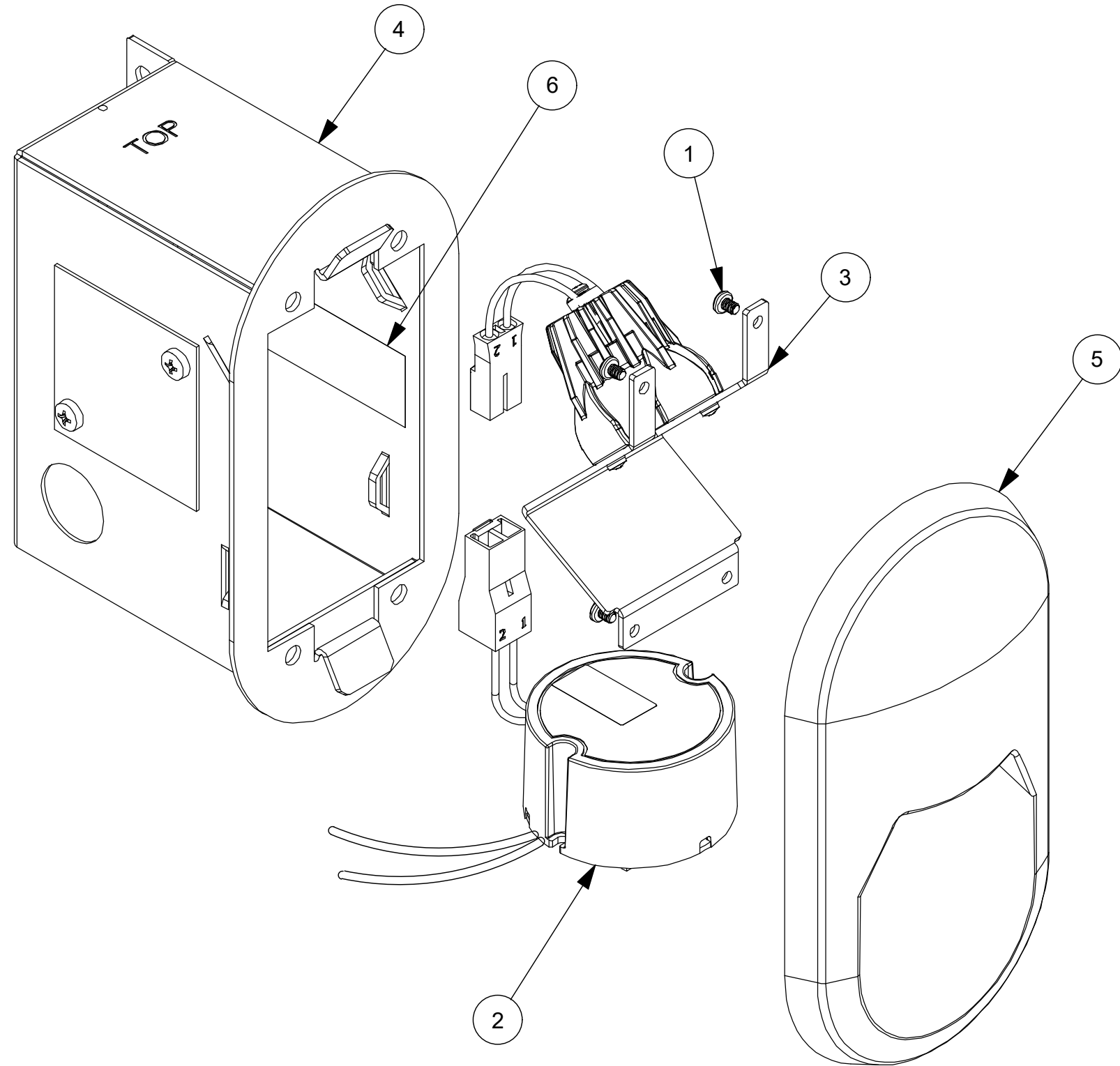
OF

REV:

1

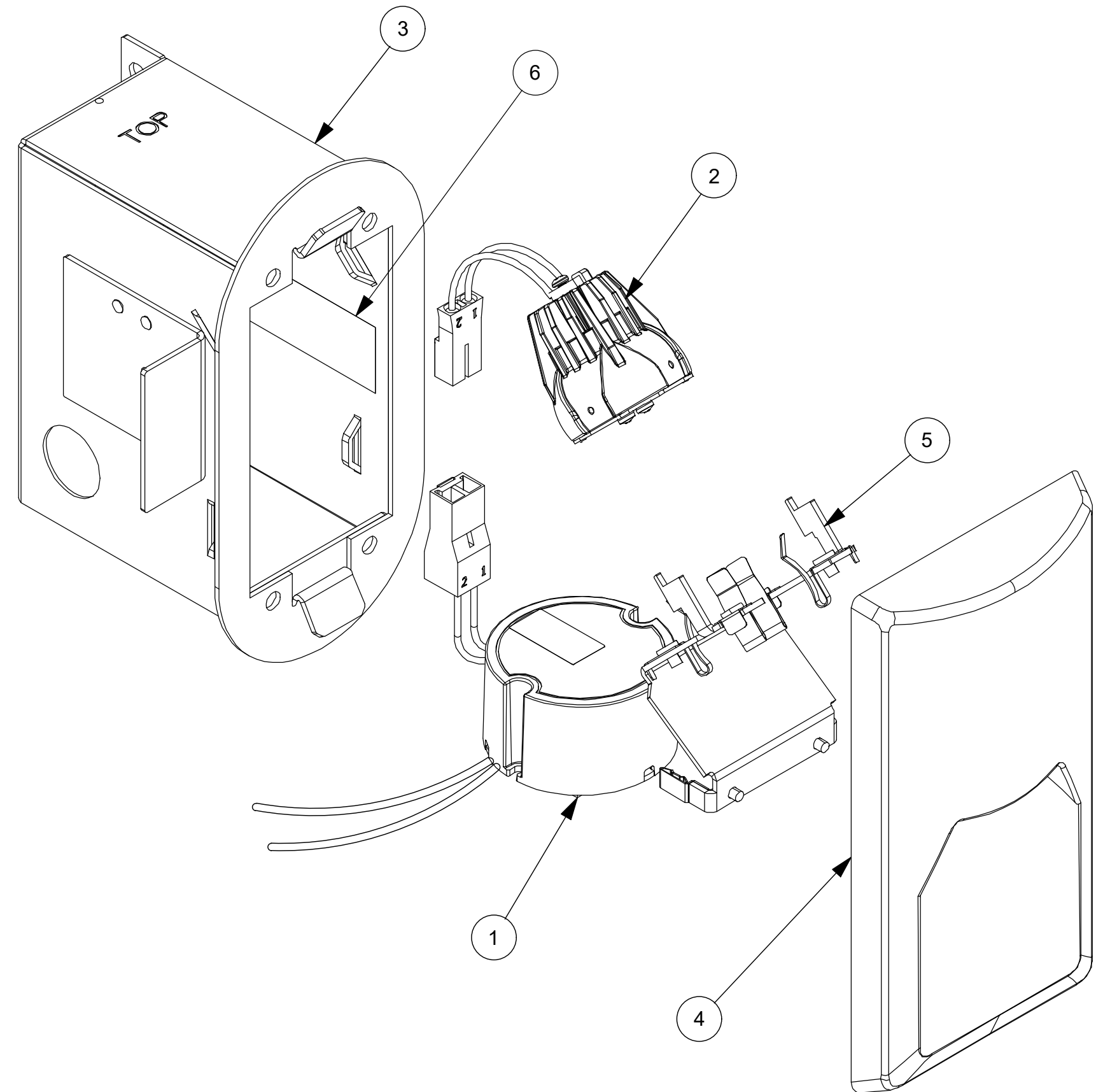
3

1



MTT-03TSK-PLL

ITEM	QTY	PART NUMBER	DESCRIPTION
1	4	502307-00-00	SCREW M3X4MM PH BLACK ZC
2	1	670081-XXX-XX	DRIVER ASSY MACRON PUCK 0-10V/TOUCH/3%/10w MAX/5-14VDC/30-500mA
3	1	670441-XXX-XX	FIXED TASK MODULE ASSEMBLY HITSVILLE
4	1	902001-00-00	HITSVILLE BOX ASSY STANDARD
5	1	904003-00-XX	OBROUND TASK FACEPLATE ASSEMBLY HITSVILLE
6	1	760785-00-00	HITSVILLE PRODUCT LABEL



MTT-03TSK-RCT-AL-26

ITEM	QTY	PART NUMBER	DESCRIPTION
1	1	670081-XXX-XX	DRIVER ASSY MACRON PUCK 0-10V/TOUCH/3%/10w MAX/5-14VDC/30-500mA
2	1	670440-XXX-XX	ADJUSTABLE TASK MODULE ASSEMBLY HITSVILLE
3	1	902001-00-26	HITSVILLE BOX ASSY STANDARD
4	1	904005-10-XX	OBROUND TASK FACEPLATE ASSEMBLY HITSVILLE
5	1	910000-00-00	ADJUSTABLE MODULE MOUNT HITSVILLE
6	1	760785-00-00	HITSVILLE PRODUCT LABEL

DO NOT SCALE DRAWING
WORK TO DIMENSIONS ONLY

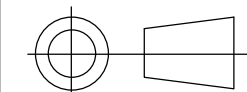
ALL DIMENSIONS ARE IN INCHES
UNLESS OTHERWISE NOTED

ALL ANGLE TOLERANCES ARE $\pm 1^\circ$
UNLESS OTHERWISE SPECIFIED

TOLERANCES
UNLESS
OTHERWISE
SPECIFIED

DECIMALS:
0.00 = $\pm .020$
0.000 = $\pm .010$

RADII:
.031 TYP.



THE KIRLIN COMPANY

3401 EAST JEFFERSON AVE
DETROIT, MICHIGAN 48207
PHONE: 313-259-6400
FAX: 313-259-3121

TITLE:
HITSVILLE TASK ASSEMBLY

MATERIAL:
SEE NOTES

FINISH:
SEE NOTES

DRAWN BY:
TMAK

DATE:
12/2/2022

CHK'D BY:

APPRV'D BY:

PART NO.

MTT-03TSK

SHT

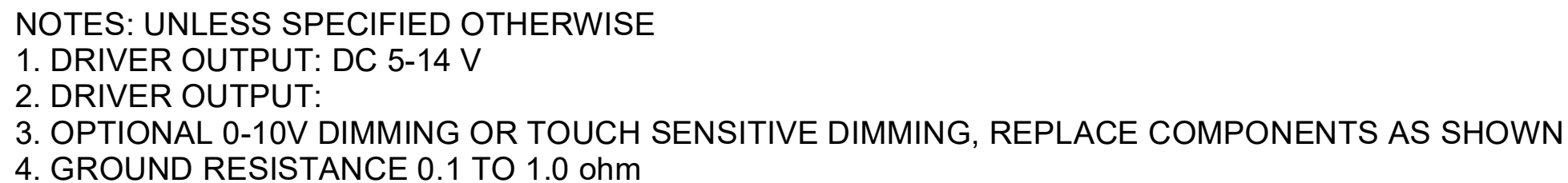
2

OF

3

REV:

1



TOLERANCES UNLESS OTHERWISE SPECIFIED				3401 EAST JEFFERSON AVE DETROIT, MICHIGAN 48207 PHONE: 313-259-6400 FAX: 313-259-3121
<u>DECIMALS:</u> 0.00 = ± .020 0.000 = ± .010	TITLE: <div style="text-align: center; font-weight: bold;">HITSVILLE TASK ASSEMBLY</div>			
<u>RADII:</u> .031 TYP.	MATERIAL: <div style="text-align: center; font-weight: bold;">SEE NOTES</div>			
FINISH: <div style="text-align: center; font-weight: bold;">SEE NOTES</div>				
DRAWN BY: <div style="text-align: center;">TMACK</div>		DATE: <div style="text-align: center;">12/2/2022</div>	CHK'D BY:	APPRV'D BY:
PART NO. <div style="text-align: center; font-weight: bold; font-size: 1.2em;">MTT-03TSK</div>			SHT <div style="text-align: center; font-size: 1.5em;">3</div>	OF <div style="text-align: center; font-size: 1.5em;">3</div>
			REV: <div style="text-align: center; font-size: 1.5em;">1</div>	