

CATALOG #	TYPE	
JOB NAME	WATTAGE	VOLTAGE

SmartLED™ MRI Lighting System

2.5" Recessed Static White Slot Light

Delivers Up To 800 Lumens Per Foot • Asymmetric Distributions

Available • LM-80 Qualified • LM-79 Certified

Specifications

Luminaire Features

- MRI-safe, low voltage linear slot light
- Shallow extruded aluminum housing; white finish standard, or see options below
- Non-ferromagnetic construction for accurate MRI scans
- Color temperature: see chart below; CRI: 90+

SmartLED™ MRI Lighting System Required

- Kirlin remote driver modules, cabinet, and RFI filters required for operation
- Components ordered separately, see [MRI-CABNT](#)
- SmartLED driver modules provide 0-10V dimming to 0.38%

SmartLED™ Emergency Backup System

- [EMI-21220](#) or [EMI-03120](#) available for emergency power
- See specification sheet; order separately

Trim/Lens

- ½" flanged trim
- Impact-resistant extruded lens with integral snap and diffusion mounting features, uniform distribution

Installation

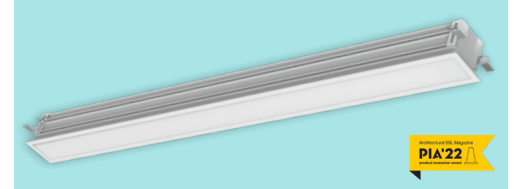
- Mounts to grid ceiling, or see Option -NCB for installation in a hard ceiling
- Adjustable brackets allow for various ceiling thicknesses
- Requires minimum 18 AWG twisted pair shielded wire from SmartLED MRI driver modules, through filters, to luminaire

UL, C-UL (Canada) Listings

- Damp, dry locations, covered ceilings

FCC Compliance

MRL-2



- SmartLED™ system meets FCC Part 15 certification, see [MRI-CABNT](#)
- **Five Year Limited Warranty**
- Complete fixture, must be installed with all SmartLED™ components

Options and Ordering Configuration

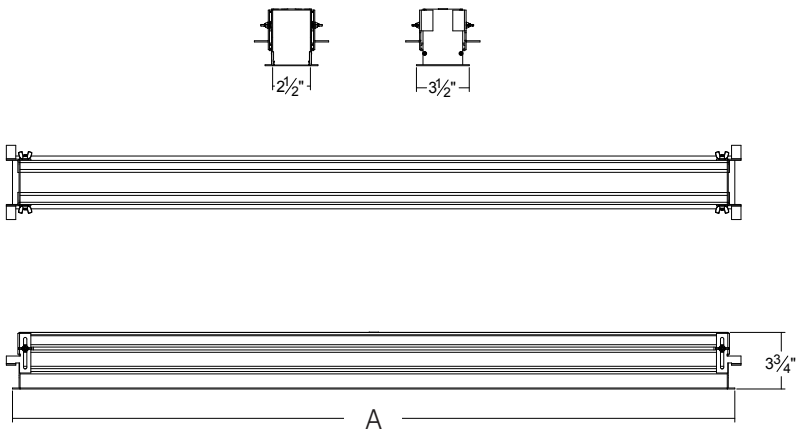
(Example: MRL-02SWM-8FT-DD-35K-TG-BG)

Declare.



Must Specify					Optional	
Model	Length	Beam	CCT & CRI	Mounting	Trim Options	Other Options
MRL-02SWM	-2FT	-DD: Direct distribution	-30K: 3000°K, 90+ CRI	-NCB: New construction mounting bracket for hard ceiling installation	(Blank): Standard white enamel trim with diffusing lens	(Blank): None
	-4FT	-AS: Asymmetric	-35K: 3500°K, 90+ CRI	-TG: T-grid ceiling mounting	Trim Finishes	-99: Special modification; consult factory
	-6FT		-40K: 4000°K, 90+ CRI		-35T: Silver enamel	
	-8FT				-38T: Black enamel	
	-10FT				-BG: BioGard anti-microbial white	
	-12FT				-94: Custom color; consult factory	
	Consult factory for longer lengths				Other Trim/Lens Features	
					-45: Gasket between trim & ceiling	

Dimensions



Length of Housing

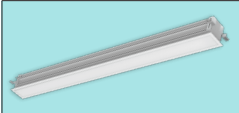
A = Length of Housing (inches) For 9/16" & 15/16" Grid Ceilings		
-2FT	STANDARD	23 7/8"
	DROP IN	23 7/8"
-4FT	STANDARD	47 7/8"
	DROP IN	47 7/8"
-6FT	STANDARD	71 7/8"
	DROP IN	71 7/8"
-8FT	STANDARD	95 7/8"
	DROP IN	95 7/8"
-10FT	STANDARD	119 7/8"
	DROP IN	119 7/8"
-12FT	STANDARD	143 7/8"
	DROP IN	143 7/8"

STANDARD = Installed occupancy side, flange fully visible from below
DROP IN = Installed plenum side, flange mostly contained behind grid

Photometry - Installed Complete Fixture

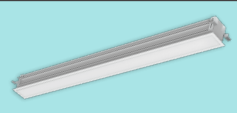
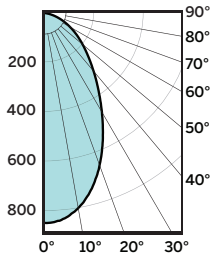
Photometry from L.L.I., Allentown, PA

LM-79 IESNA Certified Photometry from Light Labs, International



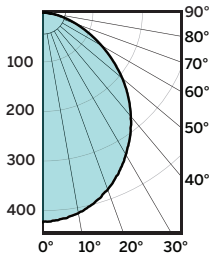
-2FT-DD

Lumens: 1559.2
Lumens/ft: 779.6
Wattage: 16.12
LPW: 96.7
Beam: 65.9°
LLI Test: 1742-001



-2FT-AS

Lumens: 1050.2
Lumens/ft: 525.1
Wattage: 16.15
LPW: 63.6
Beam: 100.2°
LLI Test: 2125-002



SmartLED™ MRI Driver Modules

Fully Digital Controlled Power Source for LED Luminaires

Mounted in Kirlin's **MRI-CABNT**



Individual Fixture Control Driver Configuration

Driver Module	Maximum Capacity	Fixture Load Examples
DVR-0350A	2 foot fixture	• Qty 1: MRL-02SWM-2FT
DVR-0700A	4 foot fixture	• Qty 1: MRL-02SWM-4FT
DVR-1050A	6 foot fixture	• Qty 1: MRL-02SWM-6FT
DVR-1490B	8 foot fixture	• Qty 1: MRL-02SWM-8FT
DVR-1050A and DVR-0788A	10 foot fixture	• Qty 1: MRL-02SWM-10FT
DVR-1400B and DVR-0788A	12 foot fixture	• Qty 1: MRL-02SWM-12FT

Maximum Driver Efficiency Configuration for fixtures 6 feet and under

Driver Module	Maximum Capacity	Fixture Load Examples
DVR-0700A	4 total feet	• Qty 2: MRL-02SWM-2FT
DVR-1050A	6 total feet	• Qty 3: MRL-02SWM-2FT • Qty 1: MRL-02SWM-4FT and Qty 1: MRL-02SWM-2FT
DVR-1400B	8 total feet	• Qty 4: MRL-02SWM-2FT • Qty 1: MRL-02SWM-4FT and Qty 2: MRL-02SWM-2FT • Qty 2: MRL-02SWM-4FT