

CATALOG #	TYPE	
JOB NAME	WATTAGE	VOLTAGE

Lighting for Patient Spaces

Strait Secure RGBW Behavioral Wall Slot

2.5" Recessed • Ligature Resistant • IK10-Rated
 LM-80 Qualified • LM-79 Certified

Specifications

Luminaire Features

- Vandal- and ligature-resistant linear wall slot light
- Shallow extruded aluminum housing with vandal- and ligature-resistant frame
- For use in behavioral health, transportation, education, and anywhere else a secure fixture is needed
- White finish standard, or see options below
- Add patient-centric, behavioral health safe color-changing to spaces

LED Driver - INTERNAL

- Indoor/Outdoor: -30°C to 60°C (-22°F to 140°F)
- DMX control of 4 color channels (red, green, blue, white) with 0.1% dimming.

Vandal-Resistant Trim/Lens Assembly

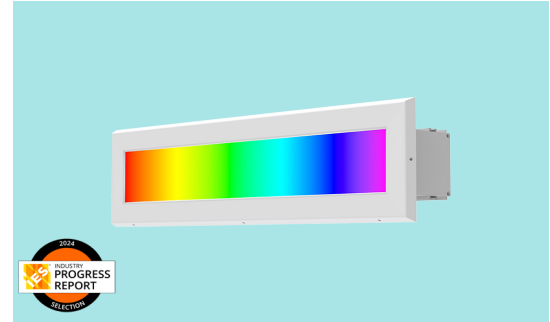
- Ligature resistant smooth single-piece aluminum frame with 0.22" polycarbonate lens

- Tamperproof screws secure frame to fixture housing
- Tamperproof tools included: one hex key per 10 fixtures and one FlexDrive bit per order for easy installation; additional FlexDrives can be purchased separately
- Anti-pixelation optical film included above polycarbonate lens

Installation

- Securely mounts to wall for use in behavioral health environments
- Mount with #6 sheet rock fasteners, supplied by others
- Indoor/outdoor in walls up to 1 1/8" thick
- Minimum spacing between fixtures is 4.5" frame edge to frame edge in any direction

VWL-02CCM



Color & Controls

- Quad chip RGBW LEDs provide rich color palette for full spectrum expression
- DMX control via Kirlin DMX wall panel **VND-DMXWP**
- Wall panel ships preloaded with standard scene configuration and presets - consult factory for custom programs

UL, C-UL (Canada) Listings

- Damp or dry locations
- Type IC; approved for direct contact with insulation

Five Year Limited Warranty

- Complete standard fixture

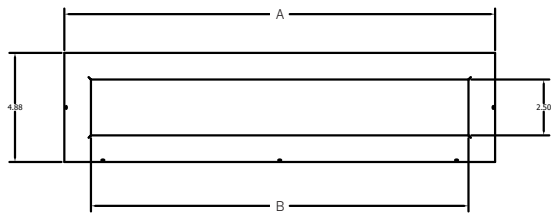
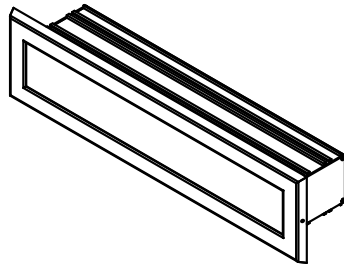
Options and Ordering Configuration

(Example: VWL-02CCM-4FT-DD-RGB4-DMX)

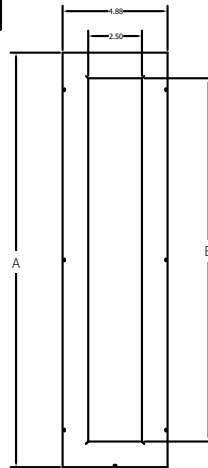
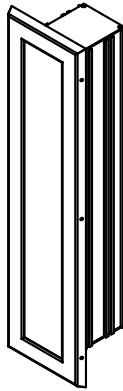
Must Specify					Optional	
Model	Length	Orientation	Output	Controls	Trim Options	Other Options
VWL-02CCM	-24IN -48IN <i>Consult factory for other lengths</i>	-HOR: Horizontal orientation -VER: Vertical orientation	-RGB4: RGB + 4000°K	-DMX	(Blank): IK10-rated white trim with polycarbonate lens Trim Finishes -35T: Silver enamel -37T: Bronze enamel -38T: Black enamel -BG: BioGard anti-microbial white -94: Custom color; see page 3 for recommended custom colors; consult factory Other Trim/Lens Features -I66: IP66 rated trim and lens; Meets ASTM E283 restricted airflow of 2CFM; Natatorium rated	(Blank): None -99: Special modification; consult factory

Dimensions

24IN Horizontal Shown



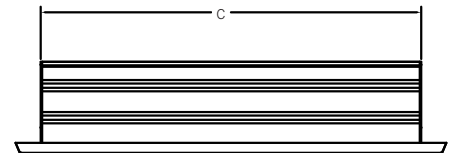
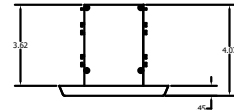
24IN Vertical Shown



Length of Housing


Nominal Length	A = Overall Length Including Frame	B = Overall Length of Lens Opening	C = Overall Length of Extrusion Only
-24IN	25 1/4"	22 7/8"	23"
-48IN	49 1/4"	46 7/8"	47"

Minimum spacing between fixtures is 4.5" frame edge to frame edge in any direction



Photometry - Installed Complete Fixture

LM-79 IESNA Certified Photometry from Independent Lab



-24IN-HOR
 Lumens:
 Lumens/ft:
 Wattage:
 LPW:
 Beam:
 LLIA Test:

TESTING UNDERWAY

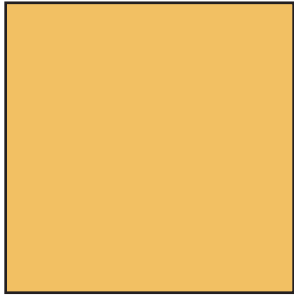
LIMITED WARRANTY: KIRLIN EXTRACTABLES ARE WARRANTED FREE OF DEFECTS IN WORKMANSHIP OR MATERIAL FOR FIVE YEARS FROM DATE OF PURCHASE. INSTALLATION, USE, MANUFACTURE AT THE OPTION WILL REPLACE OR REPAIR SUCH FIXTURE OR RETURN TO FACTORY. PATIENT SPACES APPLIED TO THE BUYER IN PLACE OF ALL OTHER WARRANTIES, EXPRESSED OR IMPLIED. SELLER DOES NOT WARRANT AS TO MERCHANTABILITY OR FITNESS FOR A PARTICULAR USE, NOR WILL ANY ORAL STATEMENT CONSTITUTE A WARRANTY. ABNORMAL USE, ABUSE OF THE FIXTURE, IMPROPER INSTALLATION, OR REPAIR OR MODIFICATION OF THE FIXTURE WITHOUT PRIOR WRITTEN AUTHORIZATION FROM THE MANUFACTURER WILL RENDER THE WARRANTY VOID.

PATIENT SPACES
 SEPTEMBER 2024

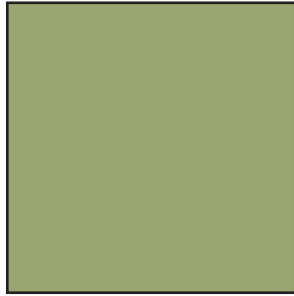
Recommended Custom Colors

The below colors match Kirlin's Scenic Patterns for a cohesive look throughout the space. To be used with option code -94.

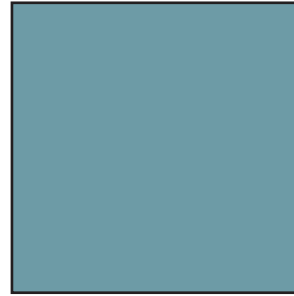
Calming Colors



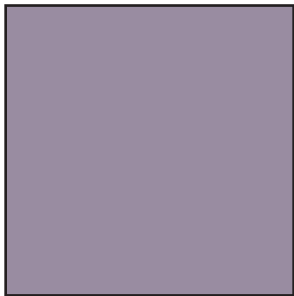
C-YLW



C-GRN



C-BLU



C-PUR

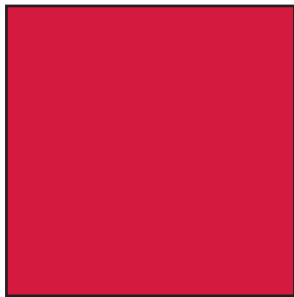


C-BRN

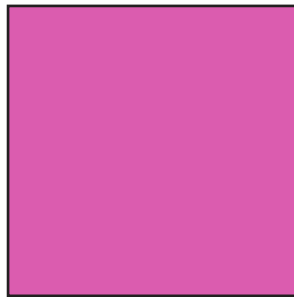


C-GRY

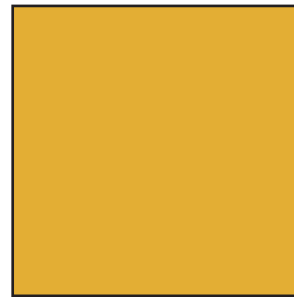
Vibrant Colors



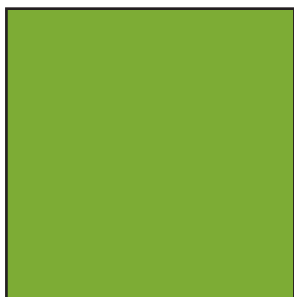
V-RED



V-PNK



V-YLW



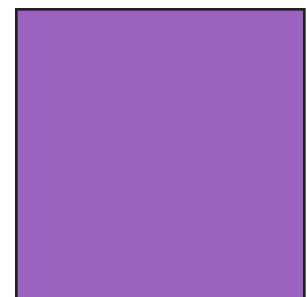
V-GRN



V-BLU



V-BLU2



V-PUR

Due to variations in monitor settings and screen resolutions, the appearance of colors, textures, and details in the images may differ from the actual product.