



Installation Guide/Owner's Manual

Hitsville Nightlight and Task Light

Technical Support: 313-259-6400, Press 5

1.0	Owner/User Responsibility	2
2.0	Safety & Important Information	2
3.0	Standards & Compliance	2
4.0	Electrical Requirements	3
5.0	Before You Begin	3
6.0	Fixture Installation.....	4-9
7.0	Sensor Controls	10
8.0	Servicing	11-13
9.0	Wiring Examples	14
9.1	Nightlight Wiring Example	14
9.2	Task Light Wiring Example	14
10.0	User Notes.....	15-16



INSTALLATION GUIDE/OWNER'S MANUAL

1.0 OWNER/USER RESPONSIBILITY

It is the responsibility of the contractor, installer, buyer, owner and user to install, maintain, and operate this luminaire in accordance with all applicable laws, regulations and local electrical safety authority requirements.

This product is only to be installed by a qualified electrician.

IMPORTANT!

Thoroughly read the entire instructions guide and warnings before beginning installation. The instructions provided are intended to assist in the installation and service of the corresponding product. Failure to follow the instructions may result in product malfunction, damage, injury or death. Contact your Kirlin service representative for replacement parts and procedures.

2.0 SAFETY & IMPORTANT INFORMATION



Risk of fire or electric shock. Ensure all power is disconnected during installation process. Refer to wiring diagrams to prevent damages and malfunctions.



This luminaire may only be connected and installed by a qualified electrician. This luminaire requires knowledge of luminaires and electrical systems. If not qualified, do not attempt installation or maintenance. All applicable regulations, legislation, and building codes must be observed.



Connecting fixtures with power **ON** will “hot plug” the LEDs and cause damage.



To prevent wiring damage or abrasion, do not expose wiring to edges metal or other sharp objects.

3.0 STANDARDS & COMPLIANCE

UL Listed	UL 1598
Restriction of hazardous substances	RoHS Compliant

4.0 ELECTRICAL REQUIREMENTS

Nominal input voltage range AC	120 - 277V
Input frequency range	50 - 60Hz
Maximum wattage	2W (Nightlight) 5.9W (Task Light)
Power factor at full load	> 0.95
Surge protection	1kV differential mode (DM) 2kV common mode (CM)

5.0 BEFORE YOU BEGIN

Before You Begin

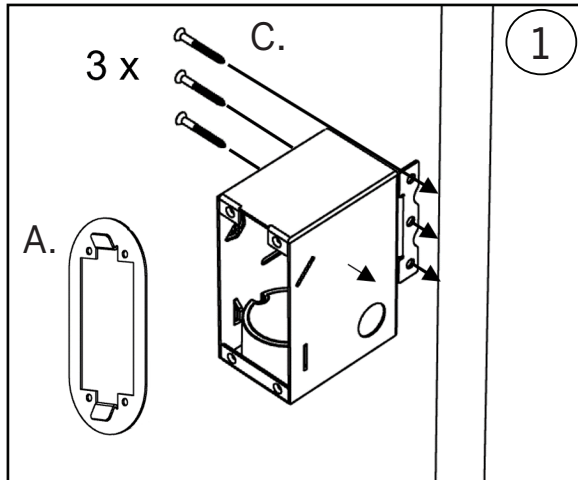
- Shut **OFF** power at fuse box or circuit breaker before installation, inspection or removal.
- To reduce the risk of fire or electric shock, **NEVER** interconnect or short output terminations.

Environmental Conditions

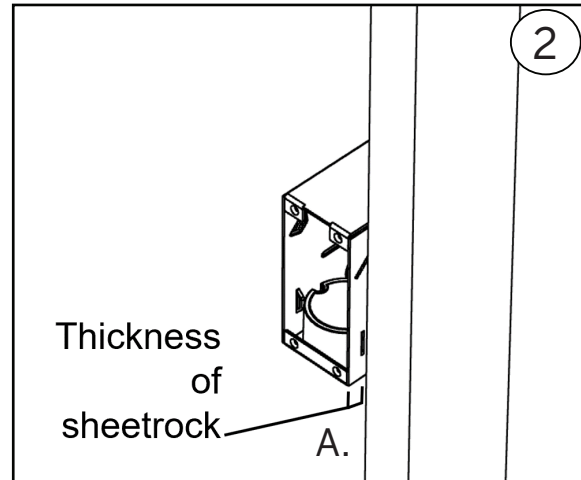
Luminaire operating ambient temperature (Ta) range	-20°C to +60°C
Luminaire	Damp or dry Wet listed faceplate on proper surface, not available for concrete pour

6.0 FIXTURE INSTALLATION

Mounting Housing Box

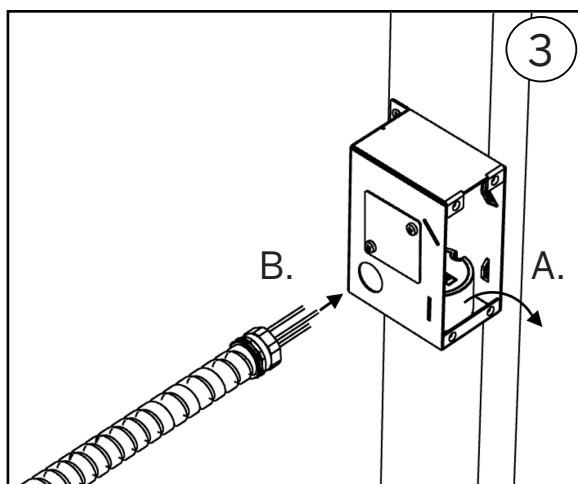


- A. Remove backer plate before installation and save for use later.
- B. Measure sheetrock thickness and mount housing to sit flush to sheetrock.
- C. Fasten the housing to stud using 3 x #6 to #8 screws (provided by others).

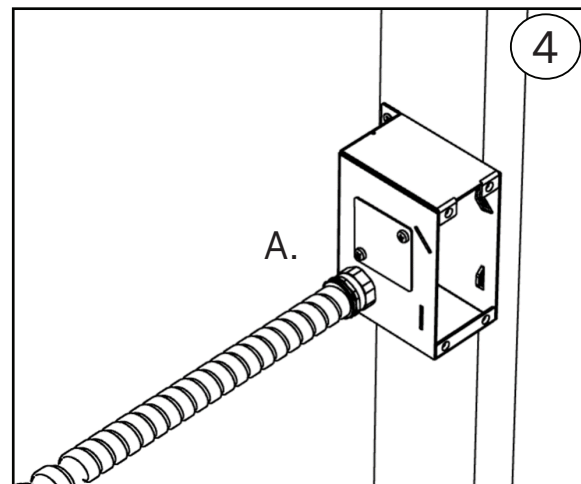


- A. Ensure that the front face of housing will sit flush with sheetrock.

NOTE: IF THE HOUSING EXTENDS PAST THE SHEETROCK THE, FACEPLATE WILL NOT SIT FLUSH ON THE WALL.



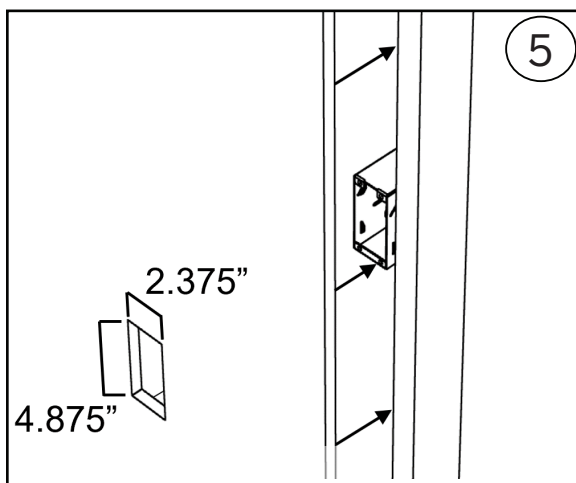
- A. Remove contents from housing and keep for wiring.
- B. Remove knockout depending on conduit (supplied by others) location and run conduit to fixture housing.



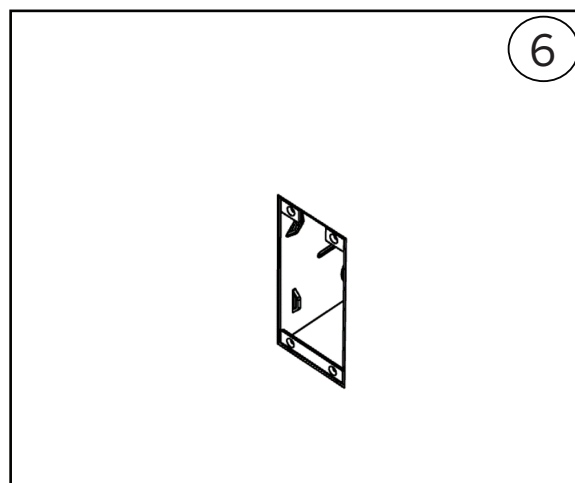
- A. Connect the conduit to the housing, using a (1/2" trade size) connector (supplied by others).
- B. Run wires into housing.

6.0 FIXTURE INSTALLATION (Continued)

Hanging Sheetrock



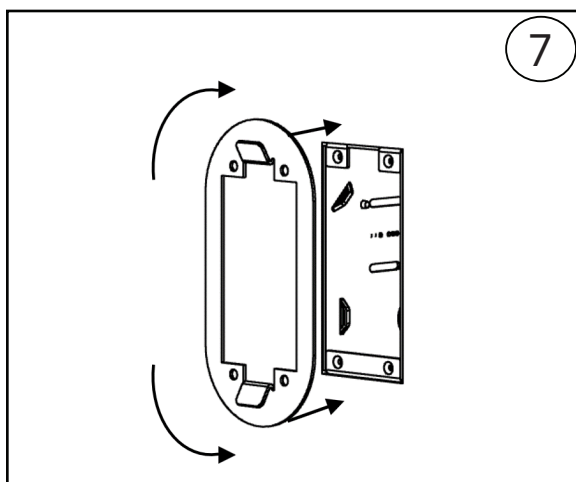
Find proper location and cut a 4.875" H x 2.375" W rectangular hole in sheetrock.



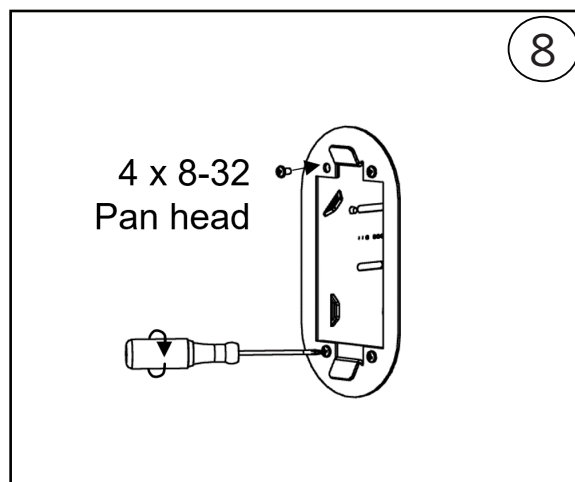
Check that housing does not extend past sheetrock surface. The housing box may be less than flush by up to 1/8".

NOTE: IF THE HOUSING BOX EXTENDS PAST THE SHEETROCK LAYER THE FIXTURE CAN NOT BE INSTALLED PROPERLY.

Attaching Backer Plate



Line up the holes on the backer plate with the housing box (universal orientation).



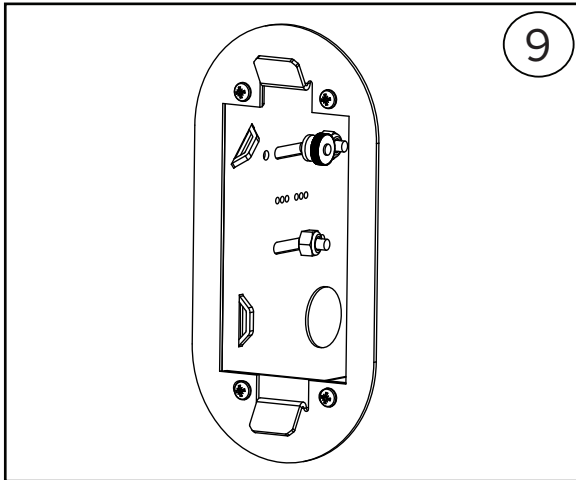
Mount backer plate to the housing box using 4 x 8-32 pan head fasteners.

Tighten fasteners to secure backer plate flush to wall. Tighten evenly before tightening fully.

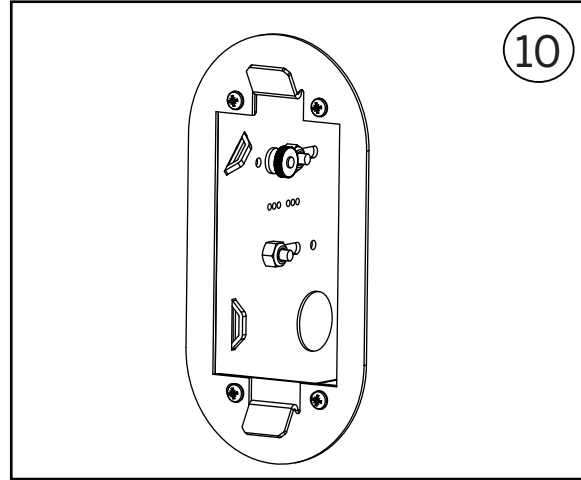
INSTALLATION GUIDE/OWNER'S MANUAL

6.0 FIXTURE INSTALLATION (Continued)

Adjusting Behavioral Bracket (when applicable)



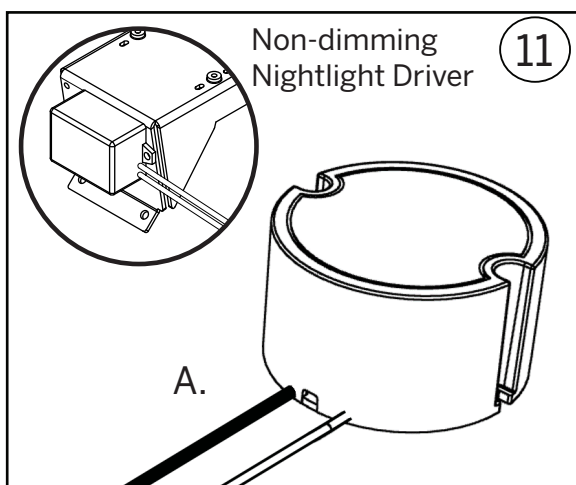
Slide bracket fasteners to front of box. Loosen thumb nut if needed.



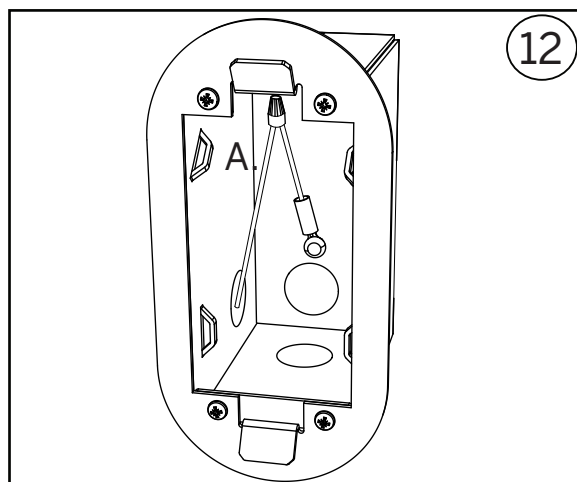
Tighten thumb nut to secure in place.

Wiring

TURN OFF ALL POWER BEFORE WIRING FIXTURE!!!
Reference Wiring Examples for Assistance - Section 9.0



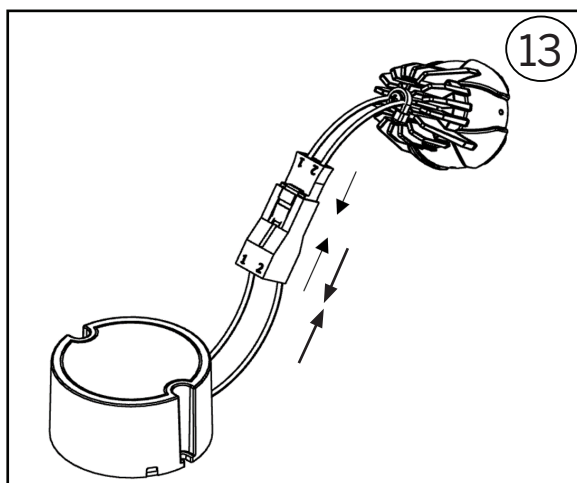
- A. Connect line (black) and neutral (white) wires to corresponding incoming wires.
- B. For 0-10V dimming, connect positive (purple) and negative (pink) dimming wires to corresponding incoming wires.



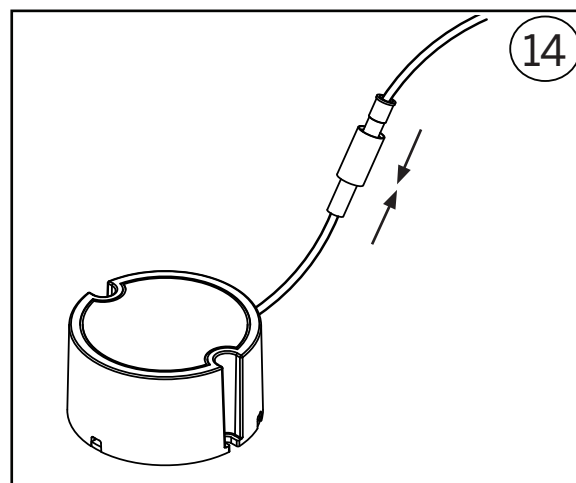
- A. Connect ground wire (green) attached to housing to incoming ground wire.
- B. Place driver back into housing (not required for non-dimming nightlight).

6.0 FIXTURE INSTALLATION (Continued)

Wiring (Continued)

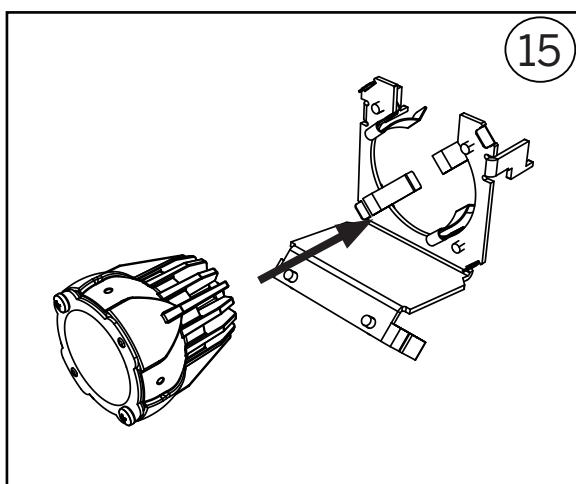


Connect the driver output plug to the corresponding plug attached to the task light module or nightlight. Non-dimming nightlights will already have driver module connected.

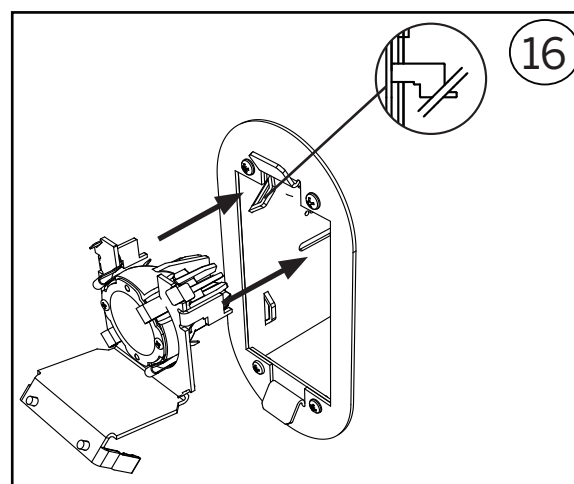


For touch dimming only: Connect the touch dimming plug to the corresponding plug attached to the faceplate touch sensor.

Attaching Adjustable Bracket (when applicable)



Snap light module into adjustable bracket clips.

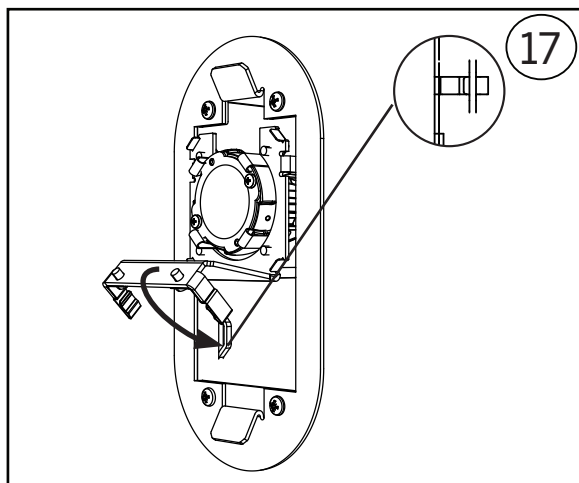


Insert top tabs of adjustable bracket into top lances of housing.

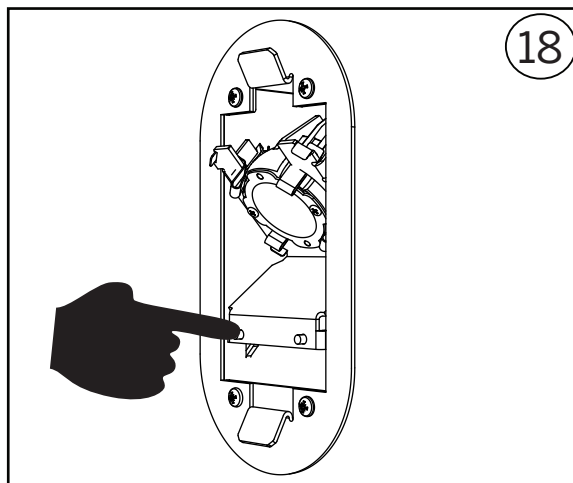
INSTALLATION GUIDE/OWNER'S MANUAL

6.0 FIXTURE INSTALLATION (Continued)

Attaching Adjustable Bracket (when applicable) (Continued)



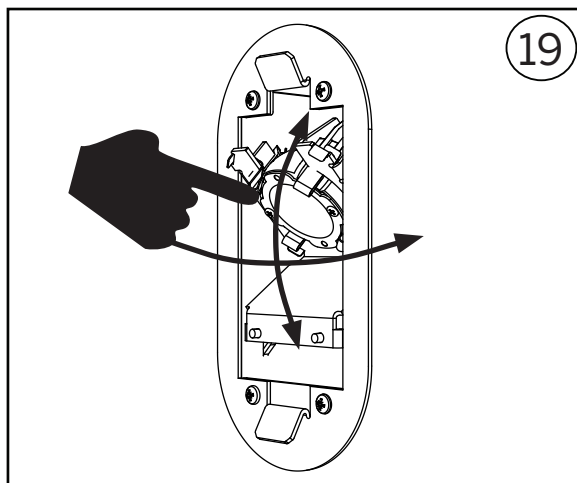
Rotate adjustable bracket down to insert bottom. Snap tabs into bottom lances on housing.



Press firmly on bottom face to attach bracket, a snap will be felt/heard. Check that all four tabs are sitting in the lances properly.

Aiming Adjustable Task Module (when applicable)

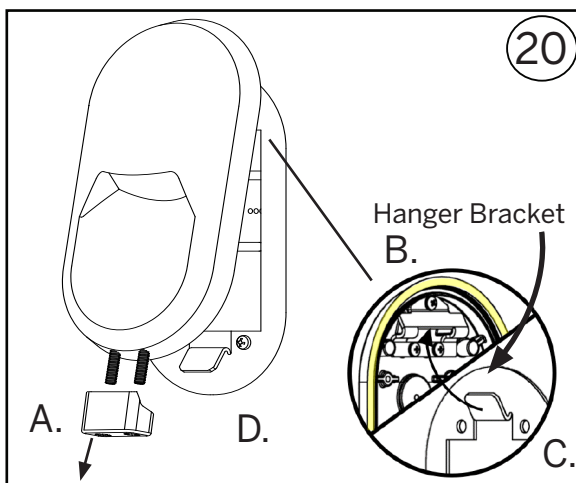
Adjust light module and aim where desired before installing faceplate. Turn on to check where light is shining.



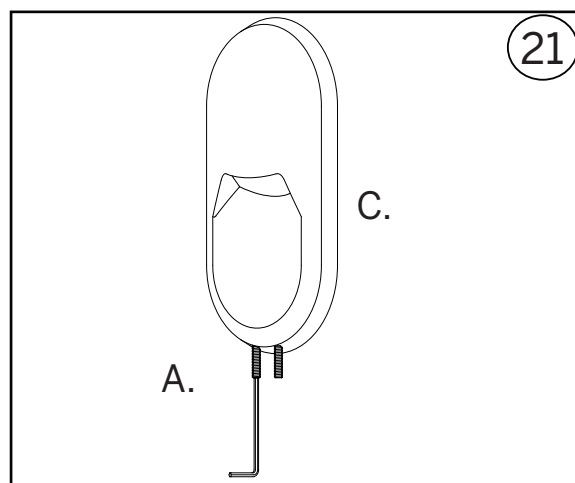
Push lightly on edge of light module to adjust positioning. Position light module towards surface to be illuminated prior to attaching face plate.

6.0 FIXTURE INSTALLATION (Continued)

Attaching Faceplate



- A. If applicable (IP-66), remove the set screw cover to reveal set screws coated in thread sealer.
- B. If using anti-pick caulking, apply to the back of the faceplate, as shown (surface B), prior to tightening.
- C. Lower faceplate at angle onto backer plate. Insert top backer plate flange into faceplate hanger bracket.
- D. Pivot faceplate down to sit flush on backer plate and wall.

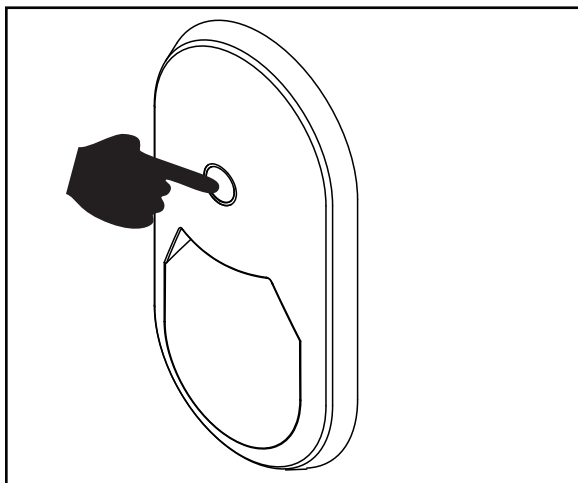


- A. Insert and tighten set screws into faceplate.
- B. Alternate between set screws before tightening fully into faceplate. Set screws should not extend past the faceplate surface. Straighten faceplate if necessary while tightening fasteners.
- C. Straighten faceplate if necessary while tightening fasteners.
- D. Check that faceplate is sitting flush to wall.
- E. Clean and wipe off any excess thread sealer or caulking after installation, if needed.

INSTALLATION GUIDE/OWNER'S MANUAL

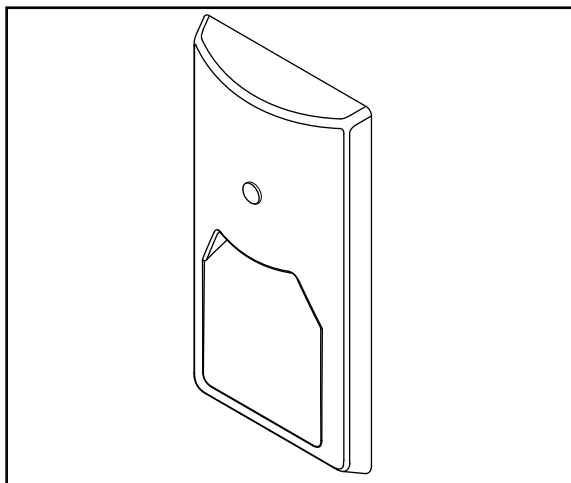
7.0 SENSOR CONTROLS

Touch Sensor



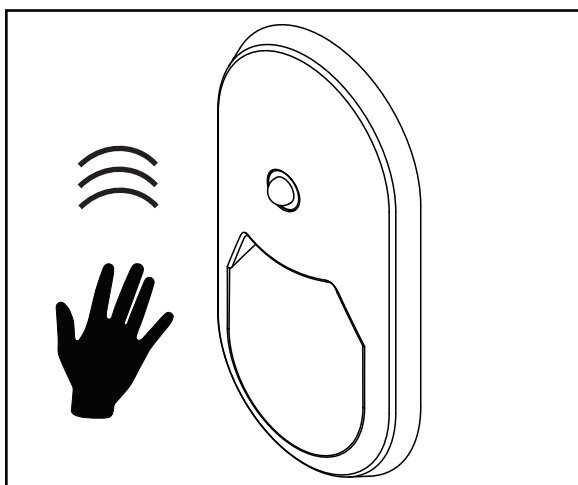
Tap touch sensor to turn task light on and off. Press and hold touch sensor to dim and brighten light.

Photocell Sensor



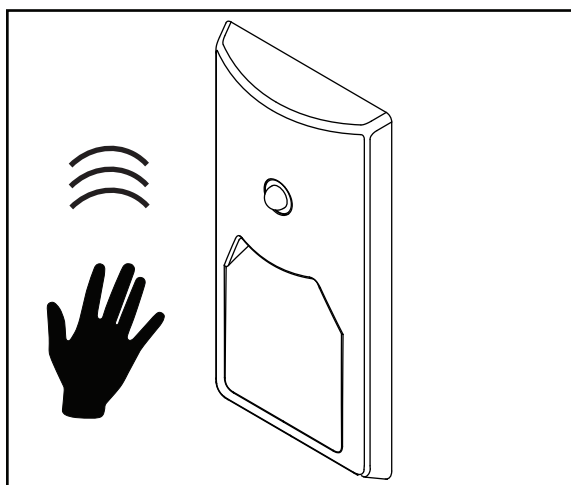
Illuminates nightlight when room is dark.

Occupancy Sensor



Illuminates nightlight when motion is detected. If no motion is detected for 30 seconds, nightlight turns off.

Combined Photocell/Occupancy Sensor



Illuminates nightlight only when room is dark AND motion is detected. If no motion is detected for 30 seconds, nightlight turns off.

7.0 SENSOR CONTROLS (CONTINUED)

Commissioning Photocell Sensor

**ALL ADJUSTMENTS MUST BE MADE WITH THE PHOTOCELL UNCOVERED
AND EXPOSED TO AMBIENT ROOM LIGHTING CONDITIONS**

1. Remove faceplate from back box assembly.
2. Energize the circuit.
3. Adjust the potentiometer fully clockwise.
The light should be off.
4. Turn the potentiometer dial counter
clockwise until the light turns on.
5. Slowly turn the potentiometer clockwise
until the light turns off.
6. When you place your hand over the light
sensor the light should turn on. When you
remove your hand the light should turn off.

ADJUSTMENT POTENTIOMETER

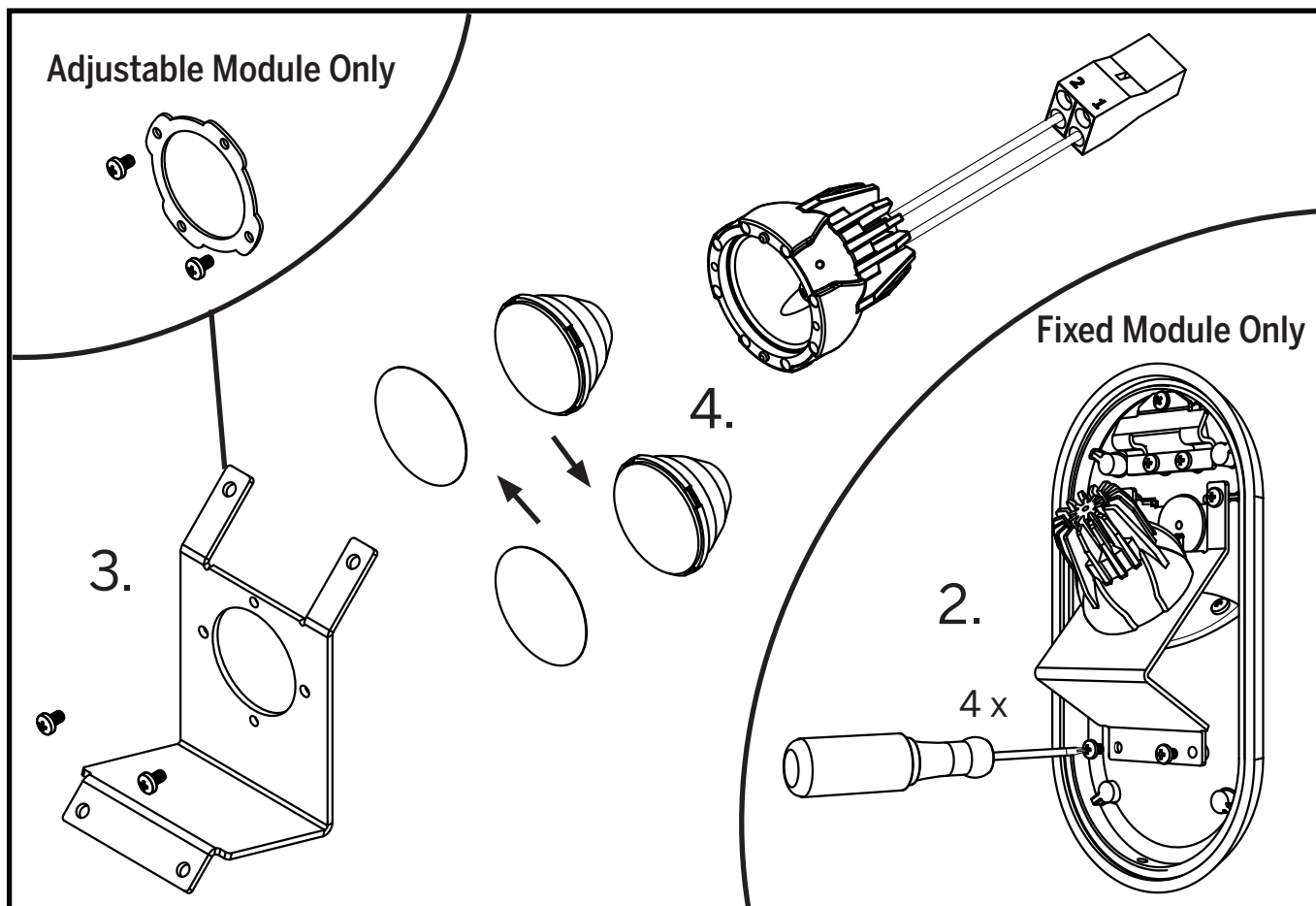
The potentiometer dial is on the backside of the
faceplate.



8.0 SERVICING

Task Light Optic Swap

TURN OFF ALL POWER BEFORE PERFORMING SERVICE!!!

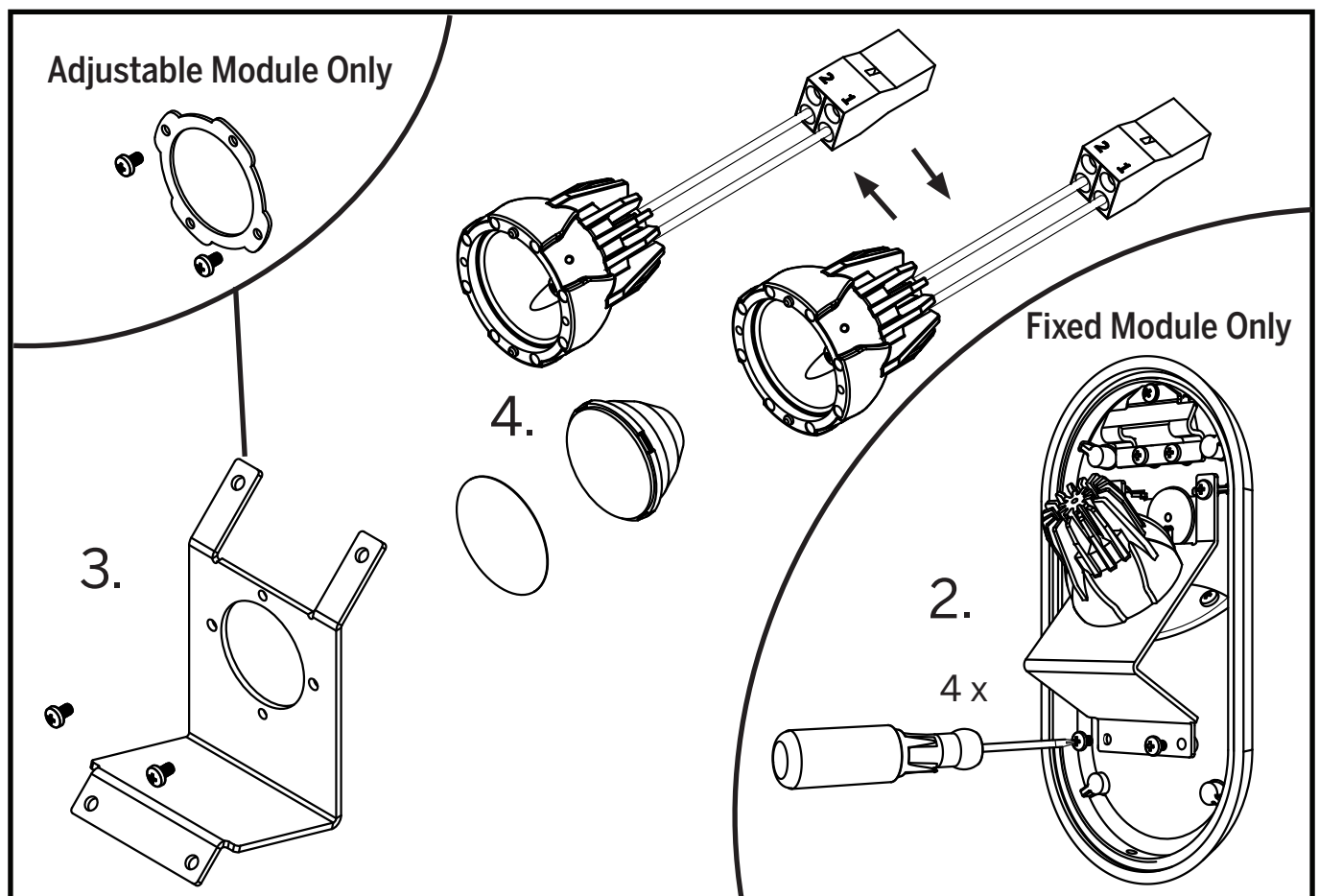


1. Detach faceplate and disconnect any wiring connections.
2. Remove 4 fasteners mounting fixed light module bracket to face plate (Fixed module only).
3. Remove two fasteners from mounting bracket (Fixed module only) or retainer ring (Adjustable module only) to release optic from light module.
4. Swap optic and film and replace into light module.
5. Follow remaining steps in reverse order to reassemble.

8.0 SERVICING (Continued)

Task Light Module Replacement

TURN OFF ALL POWER BEFORE PERFORMING SERVICE!!!

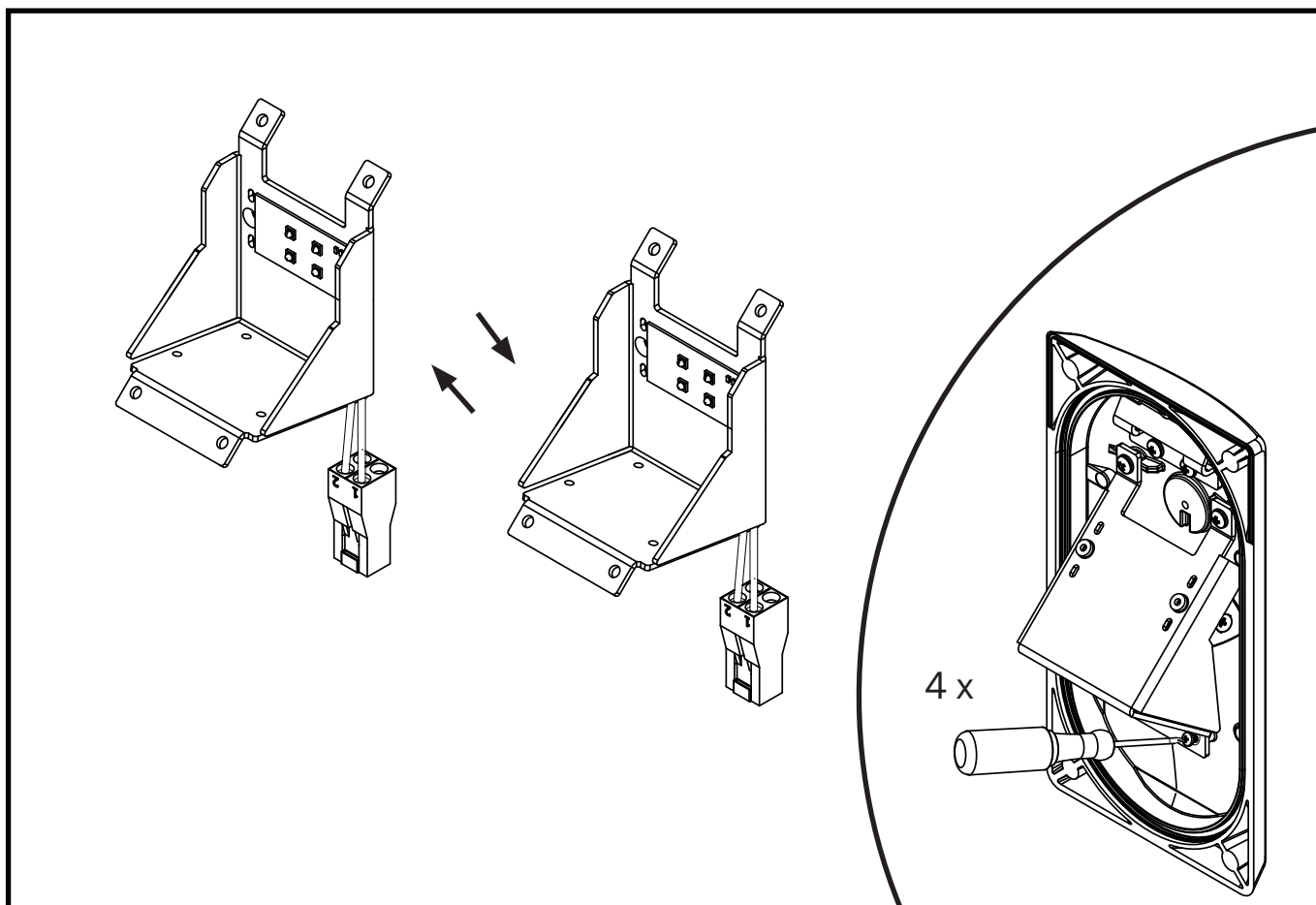


1. Detach faceplate and disconnect any wiring connections.
2. Remove 4 fasteners mounting fixed light module bracket to face plate (Fixed module only).
3. Remove two fasteners from mounting bracket (Fixed module only) or retainer ring (Adjustable module only) to release light module.
4. Remove lens and film and place into new light module.
5. Follow remaining steps in reverse order to reassemble.

8.0 SERVICING (Continued)

Nightlight Board Replacement

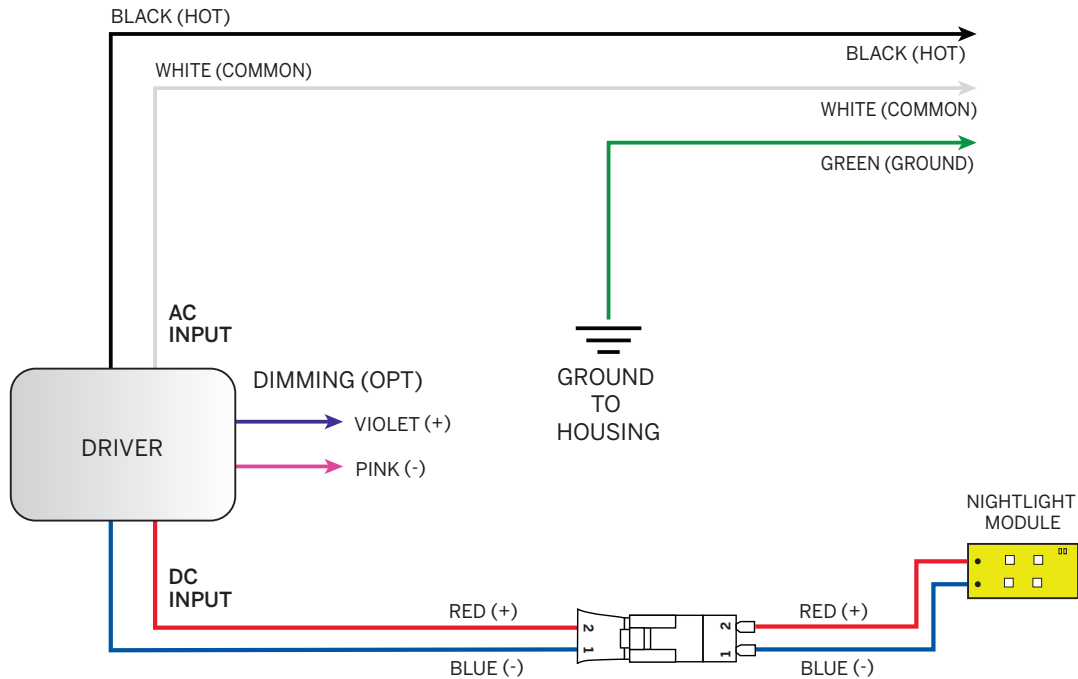
TURN OFF ALL POWER BEFORE PERFORMING SERVICE!!!



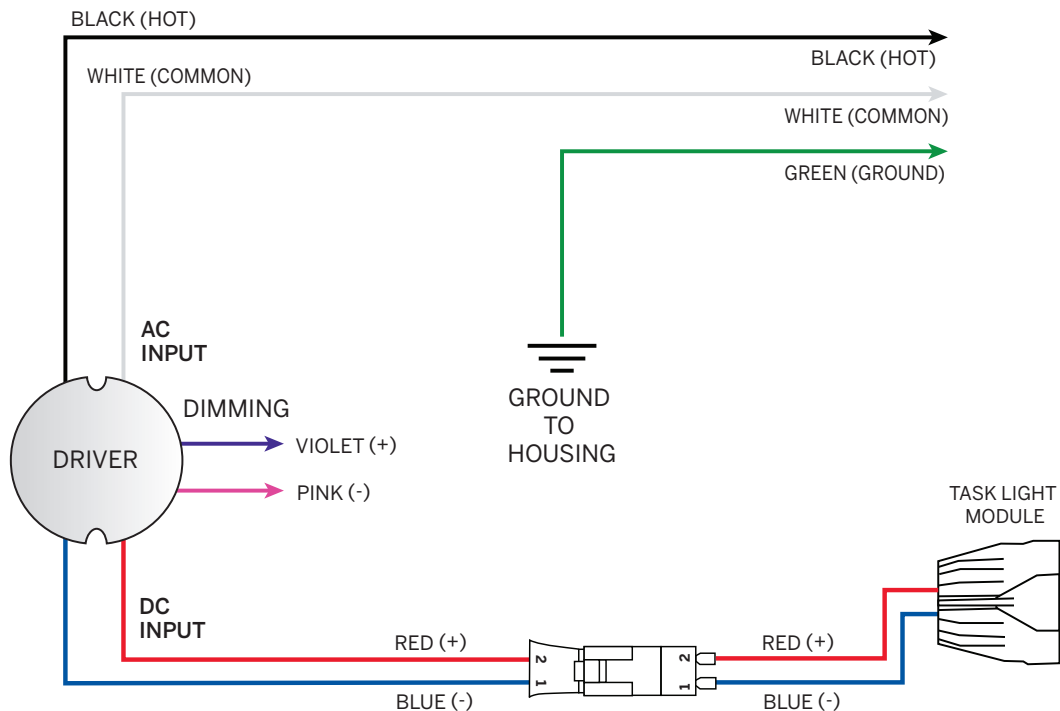
1. Detach faceplate and disconnect any wiring connections.
2. Remove 4 fasteners mounting nightlight bracket to face plate.
3. Swap night bracket and board assembly with new bracket and board assembly.
4. Follow steps in reverse order to reassemble.

90 WIRING EXAMPLES

9.1 NIGHTLIGHT WIRING EXAMPLE



9.2 TASK LIGHT WIRING EXAMPLE



10.0 USER NOTES

10.0 USER NOTES