

CATALOG #	TYPE	
JOB NAME	WATTAGE	VOLTAGE

# SmartLED™ MRI Lighting System

## 1.5" Static White Cove Light

Create a patient-centric MRI experience with adding a layer of light for low level accent lighting

### Specifications

#### Luminaire Features

- Remote driver, MRI-safe, low voltage linear cove light
- Aluminum housing with convenient mounting in architectural cove
- Non-ferromagnetic construction for accurate MRI scans

#### SmartLED™ MRI Lighting System Required

- Kirlin remote driver modules, cabinet, and RFI filters required for operation
- Components ordered separately, see below for driver information and [MRI-CABNT](#) for additional components
- SmartLED driver modules provide 0-10V dimming to 0.38%

#### Installation

- Mounts horizontally or vertically in architectural cove, including some manufactured cove systems. Contact factory for details
- Requires minimum 16 AWG twisted pair shielded wire from SmartLED MRI driver modules, through filters, to luminaire

#### UL, C-UL (Canada) Listings

- Damp, dry locations, covered ceilings

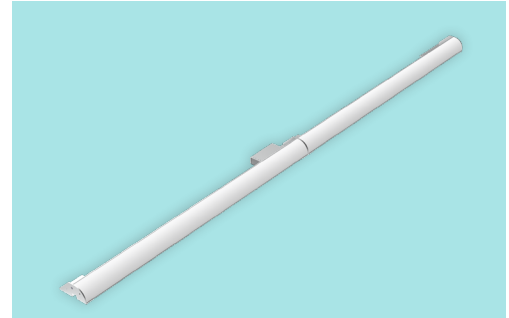
#### FCC Compliance

- SmartLED™ system meets FCC Part 15 certification, see [MRI-CABNT](#)

#### Five Year Limited Warranty

- Complete fixture, must be installed with all SmartLED™ components

## MCL COVE

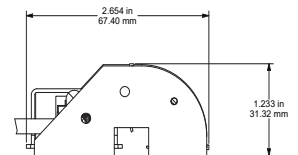
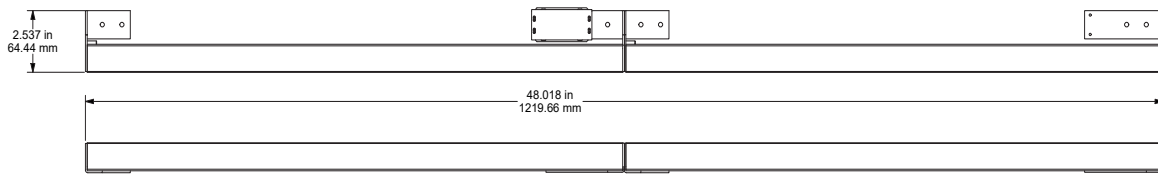


## Options and Ordering Configuration

(Example: MCL-01SWM-4FT-DD-35K)

Must Specify				
Model	Length	Beam	CCT & CRI	Other Options
MCL-01SWM	-2FT -4FT	-DD: Direct distribution	-30K: 3000°K, 90+ CRI -35K: 3500°K, 90+ CRI -40K: 4000°K, 90+ CRI	(Blank): None  -99: Special modification; consult factory

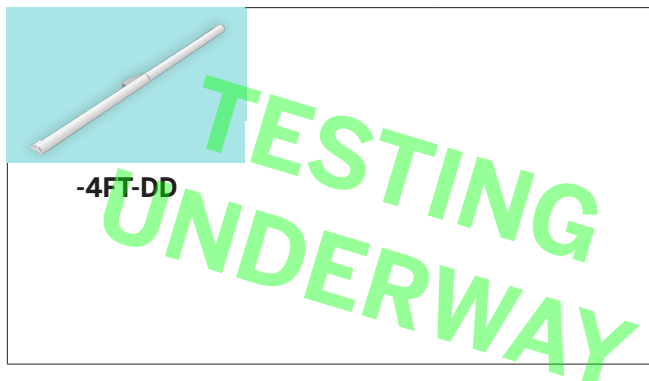
## Dimensions (4 ft length shown)



A = Length of Housing (inches)	
-2FT	24"
-4FT	48"

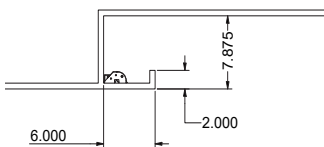
## Photometry - Installed Complete Fixture

LM-79 IESNA Certified Photometry from Independent Lab

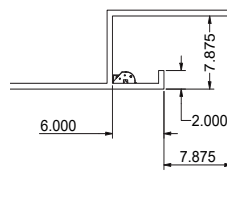


## Recommended Cove Sizes

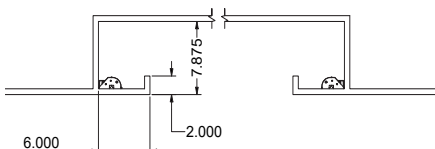
Floating Ceiling Cove



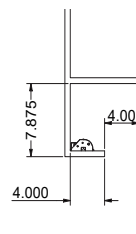
Edge of Ceiling Cove



Center Cove



Vertical Wall Plane Cove



LIMITED WARRANTY: CATALOGED KIRLIN FIXTURES ARE WARRANTED FREE OF DEFECTS IN WORKMANSHIP OR MATERIAL FOR FIVE YEARS FROM DATE OF PURCHASE. INSTALLED TO N.E.C. / IN NORMAL USE. Manufacturer at the option will replace or repair such fixture or refund the purchase price on presentation of proof of purchase and defective fixture at the offices of manufacturer within the years of original shipment. Liability of manufacturer is limited to the foregoing and manufacturer shall not be liable for any other damages, direct or indirect, sustained or suffered by purchaser or any person. This warranty is applied to the buyer in place of all other warranties, expressed or implied. Seller does not warrant as to merchantability or fitness for a particular use, nor will any oral statement constitute a warranty or amend this specific warranty. Abnormal use, abuse of the fixture, improper installation, or repair or modification of the fixture without prior written authorization from the manufacturer will render the warranty void.

# SmartLED™ MRI Driver Modules

Fully Digital Controlled Power Source for LED Luminaires

Mounted in Kirlin's **MRI-CABNT**



Driver Module	Maximum Capacity	Fixture Load Examples
DVR-0175A	2 foot run	<ul style="list-style-type: none"> <li>Qty 1: MCL-01SWM-2FT</li> </ul>
DVR-0350A	4 foot run	<ul style="list-style-type: none"> <li>Qty 1: MCL-01SWM-4FT</li> <li>Qty 2: MCL-01SWM-2FT</li> </ul>
DVR-0528A	6 foot run	<ul style="list-style-type: none"> <li>Qty 3: MCL-01SWM-2FT</li> <li>Qty 1: MCL-01SWM-4FT and Qty 1: MCL-01SWM-2FT</li> </ul>
DVR-0700A	8 foot run	<ul style="list-style-type: none"> <li>Qty 2: MCL-01SWM-4FT</li> <li>Qty 1: MCL-01SWM-4FT and Qty 2: MCL-01SWM-2FT</li> </ul>
DVR-0875A	10 foot run	<ul style="list-style-type: none"> <li>Qty 2: MCL-01SWM-4FT and Qty 1: MCL-01SWM-2FT</li> <li>Qty 1: MCL-01SWM-4FT and Qty 3: MCL-01SWM-2FT</li> </ul>
DVR-1050A	12 foot run	<ul style="list-style-type: none"> <li>Qty 3: MCL-01SWM-4FT</li> <li>Qty 2: MCL-01SWM-4FT and Qty 2: MCL-01SWM-2FT</li> </ul>
DVR-1225B	14 foot run	<ul style="list-style-type: none"> <li>Qty 3: MCL-01SWM-4FT and Qty 1: MCL-01SWM-2FT</li> <li>Qty 2: MCL-01SWM-4FT and Qty 3: MCL-01SWM-2FT</li> </ul>
DVR-1400B	16 foot run	<ul style="list-style-type: none"> <li>Qty 4: MCL-01SWM-4FT</li> <li>Qty 3: MCL-01SWM-4FT and Qty 2: MCL-01SWM-2FT</li> </ul>
DVR-1575B	18 foot run	<ul style="list-style-type: none"> <li>Qty 4: MCL-01SWM-4FT and Qty 1: MCL-01SWM-2FT</li> <li>Qty 3: MCL-01SWM-4FT and Qty 3: MCL-01SWM-2FT</li> </ul>