

CATALOG #	TYPE	
JOB NAME	WATTAGE	VOLTAGE

# SmartLED™ MRI Lighting System

## RGBW Color-Changing Cove Light

Create a patient-centric MRI experience with soothing, dynamic color scenes

### Specifications

#### Luminaire Features

- Remote driver, MRI-safe, low voltage linear cove light
- Aluminum housing with convenient mounting in architectural cove
- Non-ferromagnetic construction for accurate MRI scans

#### SmartLED™ MRI System Components

- Kirlin DMX remote driver modules, cabinet, and RFI filters required for operation
- Components ordered separately, see [MRI-DMXPS](#)

#### Installation

- Mounts horizontally or vertically in architectural cove, including some manufactured cove systems. Contact factory for details
- Requires minimum 18 AWG twisted pair shielded wire from SmartLED MRI driver modules, through filters, to luminaire

#### Color & Controls

- Quad chip RGBW LEDs provide rich color palette for full spectrum expression
- DMX control via Kirlin DMX wall panel [MRI-DMXWP](#)
- Wall panel ships preloaded with standard scene configuration and presets - consult factory for custom programs

#### UL, C-UL (Canada) Listings

- Damp, dry locations, covered ceilings

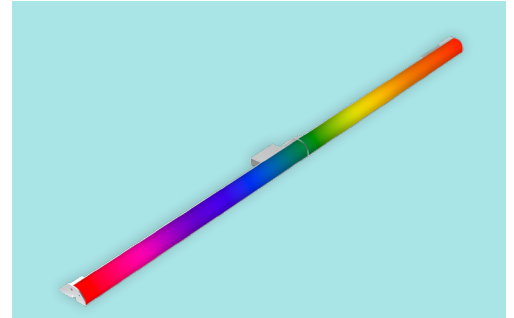
#### FCC Compliance

- SmartLED™ system meets FCC Part 15 certification, see [MRI-DMXPS](#)

#### Five Year Limited Warranty

- Complete fixture, must be installed with all SmartLED™ components

## MCL Cove

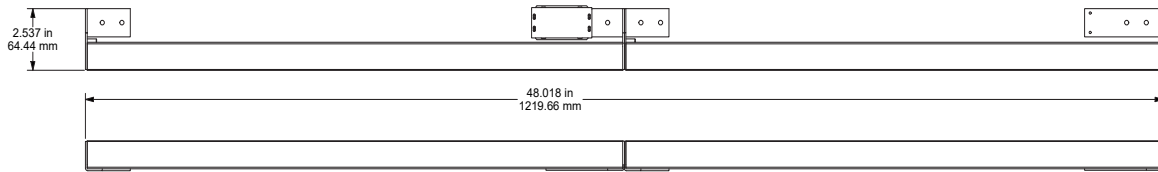


## Options and Ordering Configuration

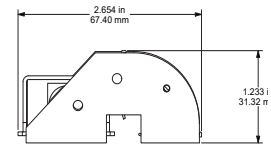
(Example: MCL-01CCM-4FT-DD-RGB4-DMX)

Must Specify					Optional
Model	Length	Beam	Output	Controls	Other Options
MCL-01CCM	-2FT -4FT	-DD: Direct distribution	-RGB4: RGB + 4000K	-DMX*	(Blank): None  -99: Special modification; consult factory
<p><b>*Note:</b> For MRI use, remote DMX drivers, cabinet, controller, and MRI filters must be used.</p>					

## Dimensions (4 ft length shown)

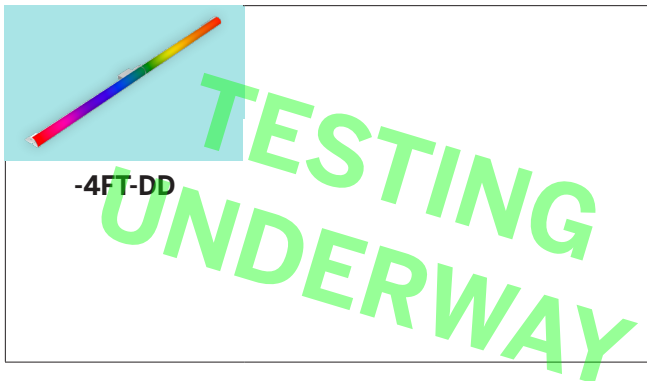


A = Length of Housing (inches)	
-2FT	24"
-4FT	48"



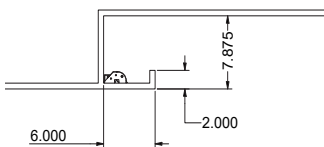
## Photometry - Installed Complete Fixture

LM-79 IESNA Certified Photometry from Independent Lab

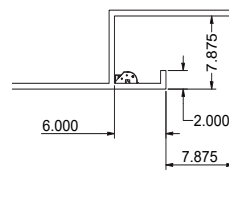


## Recommended Cove Sizes

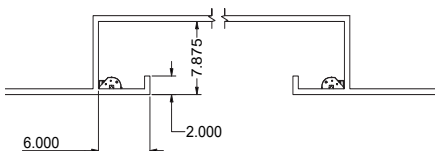
Floating Ceiling Cove



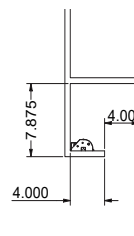
Edge of Ceiling Cove



Center Cove



Vertical Wall Plane Cove



LIMITED WARRANTY: CATALOGED KIRLIN FIXTURES ARE WARRANTED FREE OF DEFECTS IN WORKMANSHIP OR MATERIAL FOR FIVE YEARS FROM DATE OF PURCHASE. INSTALLED TO N.E.C. / IN NORMAL USE. Manufacturer at the option will replace or repair such fixture or refund the purchase price on presentation of proof of purchase and defective fixture at the offices of manufacturer within the years of original shipment. Liability of manufacturer is limited to the foregoing and manufacturer shall not be liable for any other damages, direct or indirect, sustained or suffered by purchaser or any person. This warranty is applied to the buyer in place of all other warranties, expressed or implied. Seller does not warrant as to merchantability or fitness for a particular use, nor will any oral statement constitute a warranty or amend this specific warranty. Abnormal use, abuse of the fixture, improper installation, or repair or modification of the fixture without prior written authorization from the manufacturer will render the warranty void.

MRI LIGHTING  
JUNE 2023