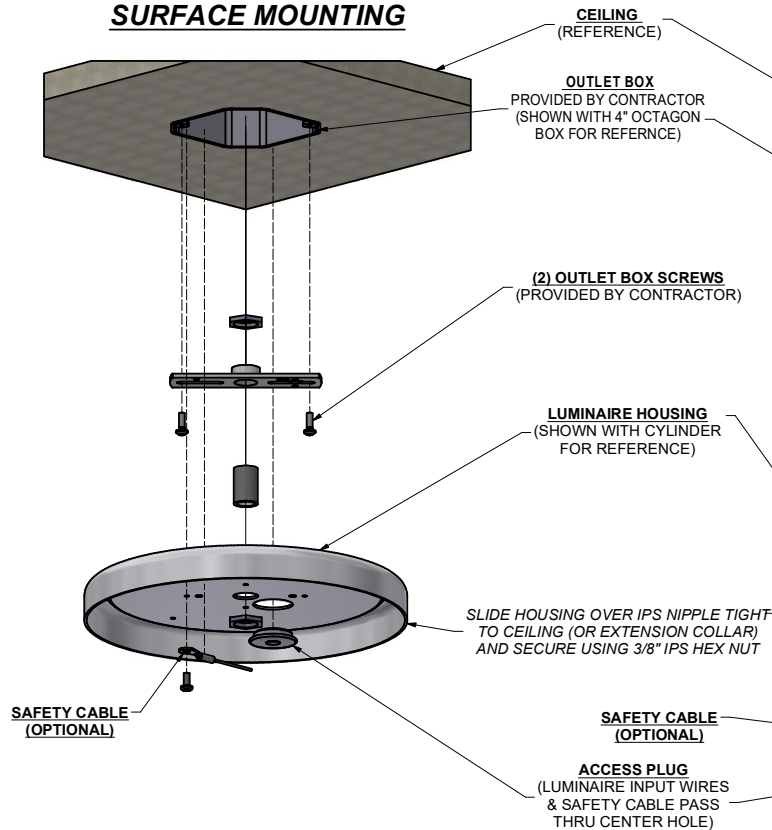
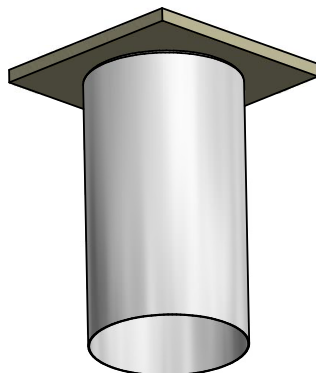
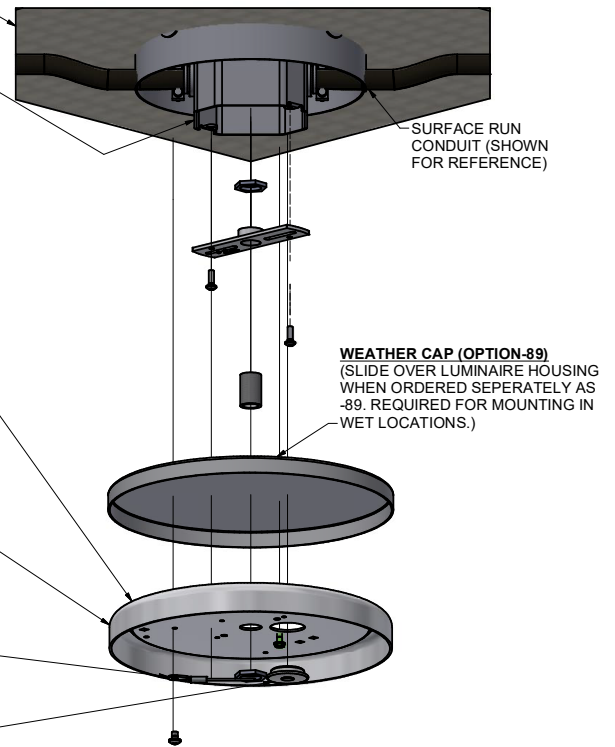


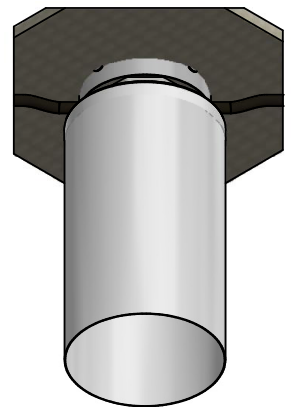
STANDARD SURFACE MOUNTING



-80 COLLAR MOUNTING (SHOWN WITH OPTIONAL -89 WEATHERCAP)

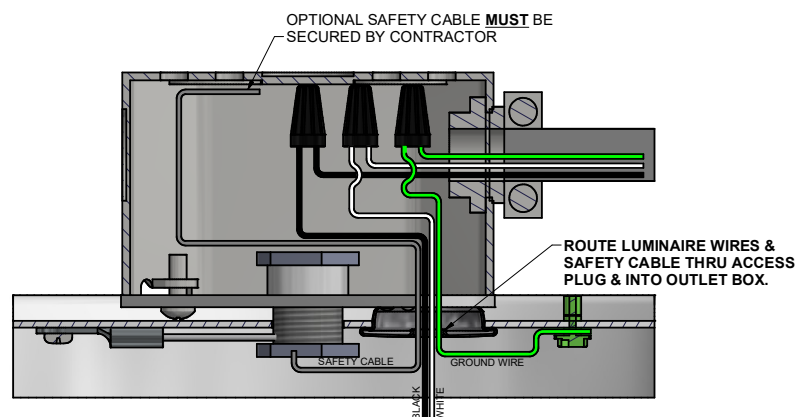


FULLY ASSEMBLED
(REFERENCE)



FULLY ASSEMBLED
(REFERENCE)

VIEW OF WIRES IN THE JUNCTION BOX



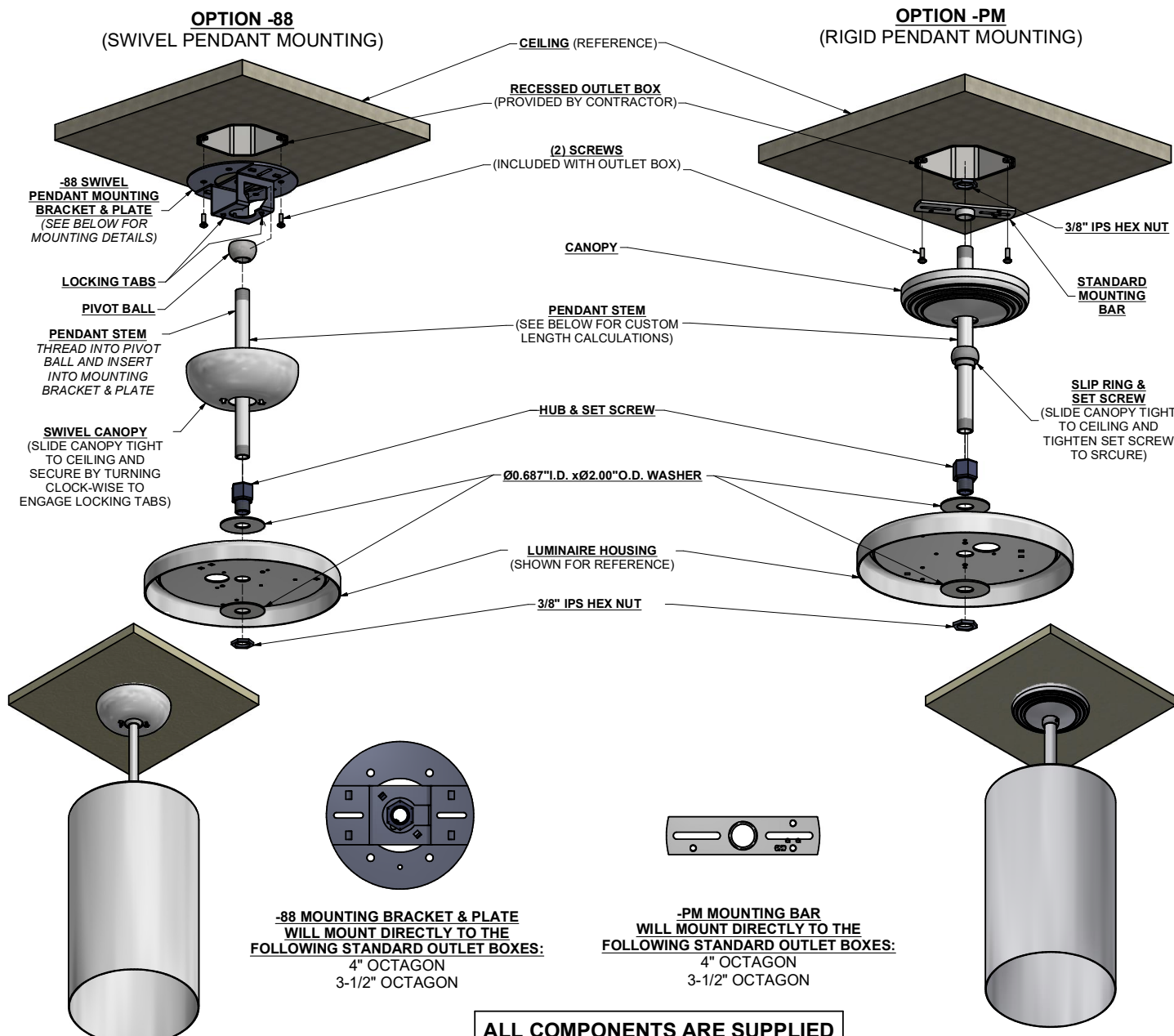
STANDARD MOUNTING BAR
WILL MOUNT DIRECTLY TO THE
FOLLOWING STANDARD OUTLET BOXES:
4" OCTAGON
3-1/2" OCTAGON

!!CAUTION!!
DO NOT BRING BUILDING
WIRE INTO LUMINAIRE.

LUMINAIRE LEADS **MUST**
TERMINATE IN OUTLET BOX MOUNTED
IN CEILING ABOVE AS SHOWN

ALL COMPONENTS SUPPLIED
BY THE KIRLIN COMPANY
UNLESS OTHERWISE SPECIFIED

INSTALL IN ACCORDANCE WITH ALL APPLICABLE NATIONAL AND LOCAL ELECTRIC CODES
INSTALL IN ACCORDANCE WITH ALL MARKINGS APPEARING ON OR INSIDE LUMINAIRES

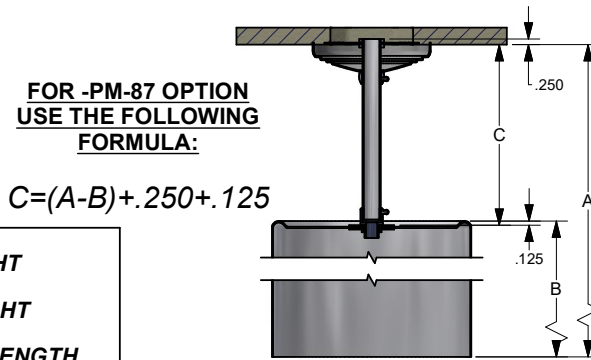
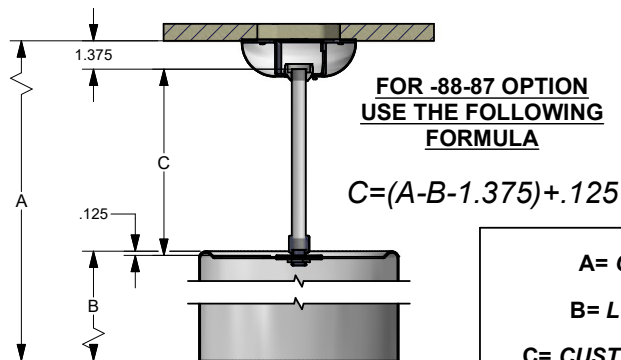


ALL COMPONENTS ARE SUPPLIED
BY THE KIRLIN COMPANY UNLESS
OTHERWISE SPECIFIED

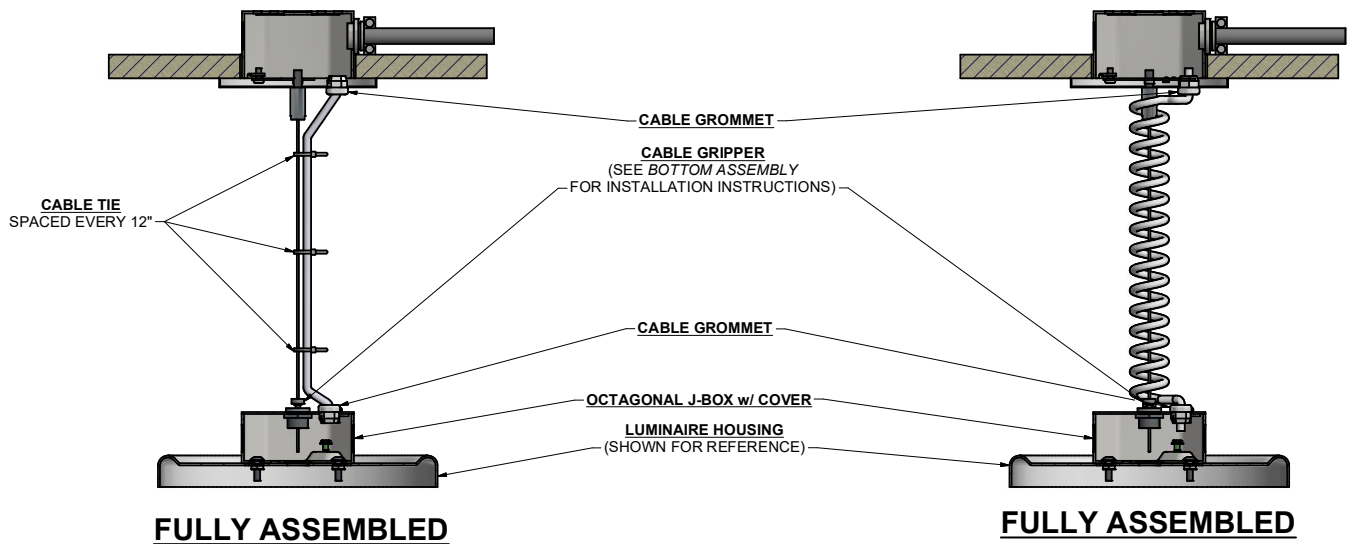
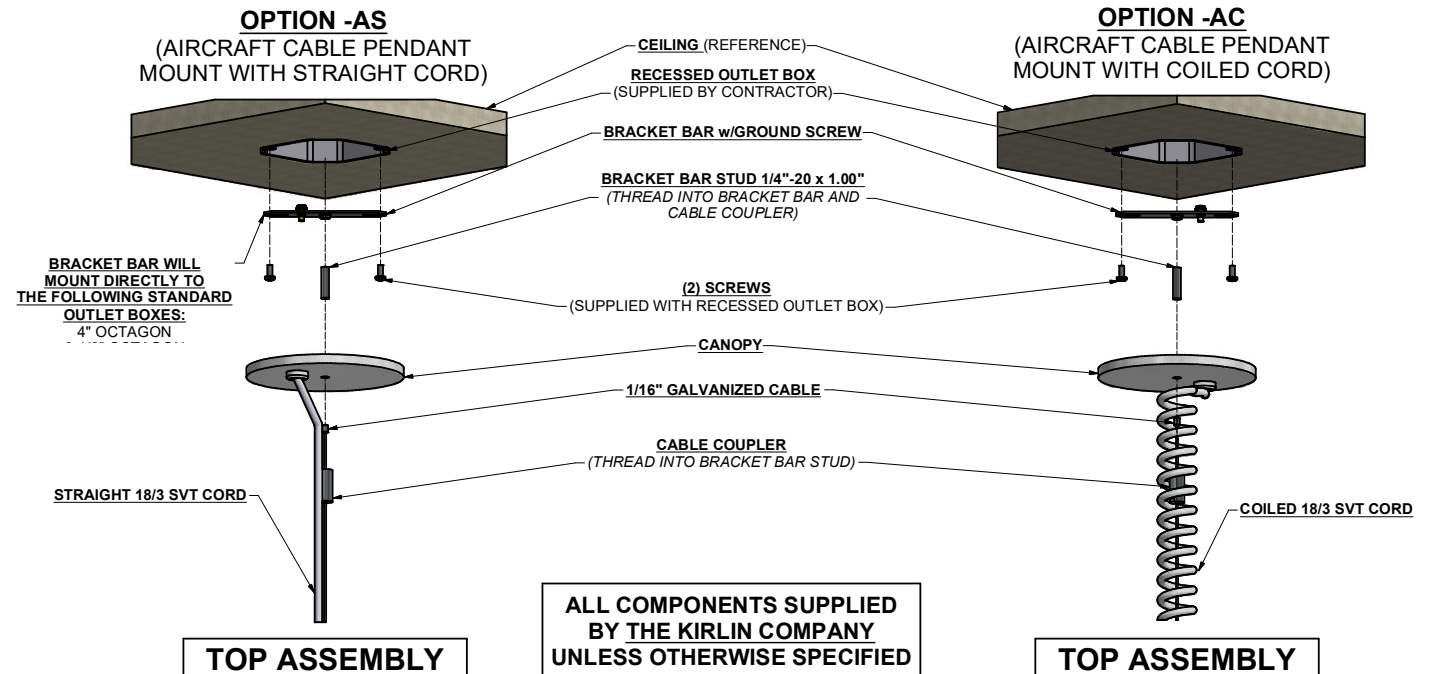
FULLY ASSEMBLED
(REFERENCE)

FULLY ASSEMBLED
(REFERENCE)

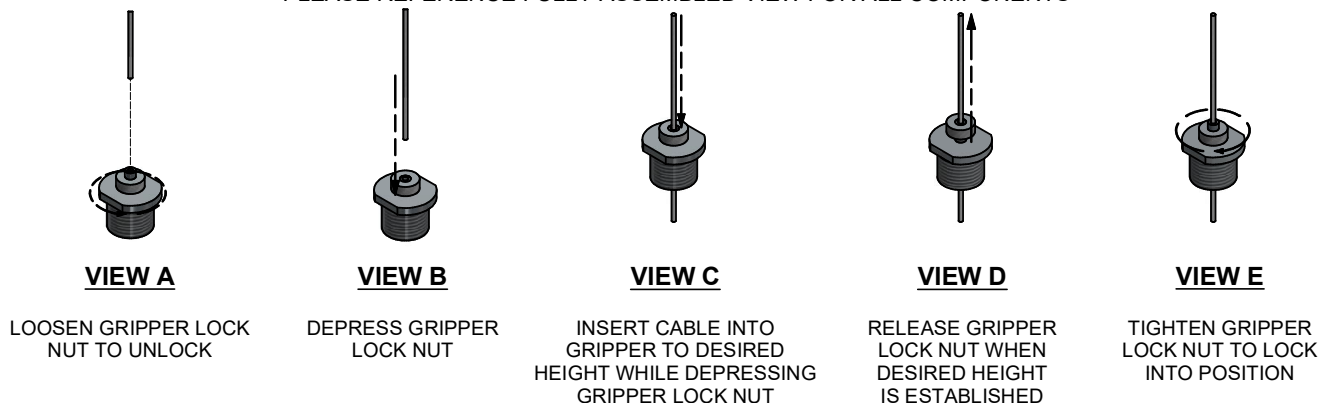
USE TO DETERMINE CUSTOM PENDANT LENGTH FOR THE -87 OPTION



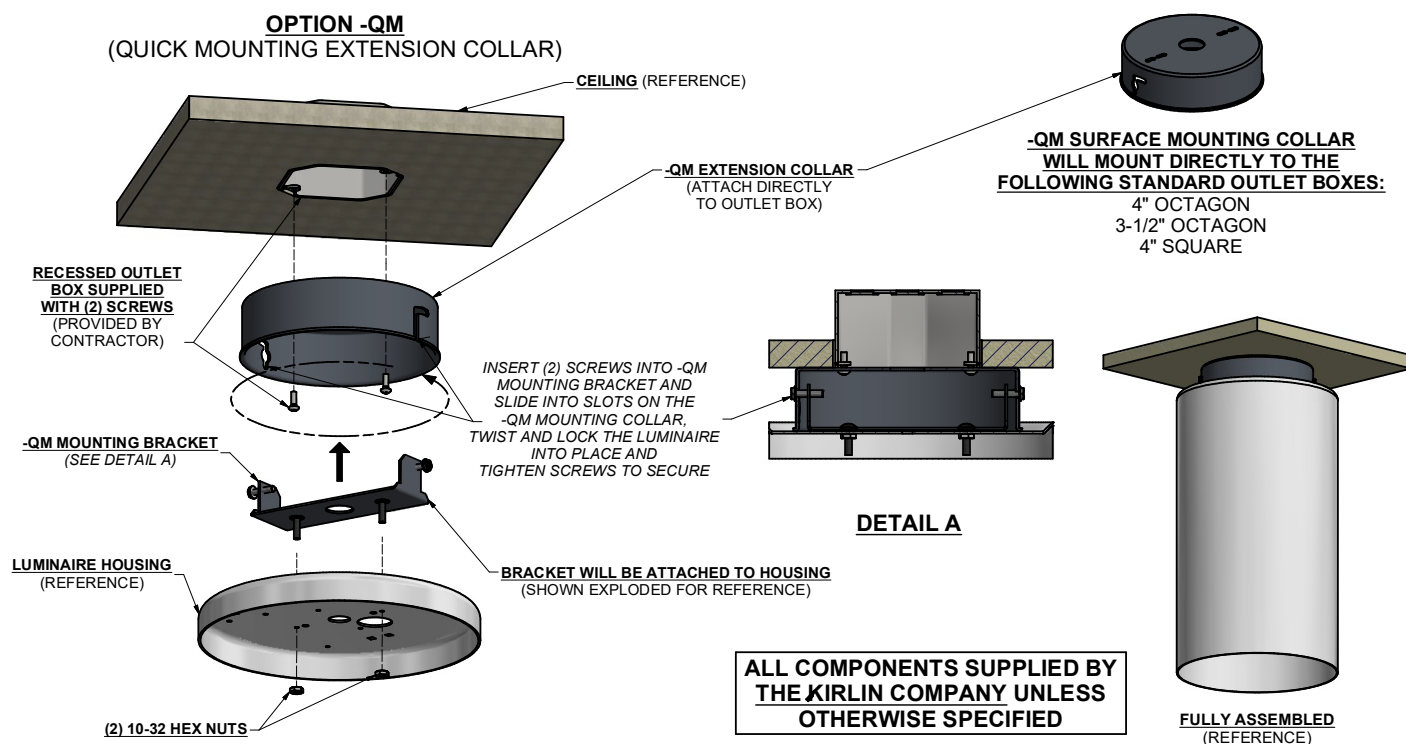
INSTALL IN ACCORDANCE WITH ALL APPLICABLE NATIONAL AND LOCAL ELECTRIC CODES
INSTALL IN ACCORDANCE WITH ALL MARKINGS APPEARING ON OR INSIDE LUMINAIRES



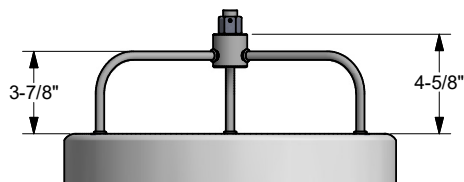
BOTTOM ASSEMBLY
(SOME COMPONENTS HAVE BEEN REMOVED FOR CLARITY)
PLEASE REFERENCE FULLY ASSEMBLED VIEW FOR ALL COMPONENTS



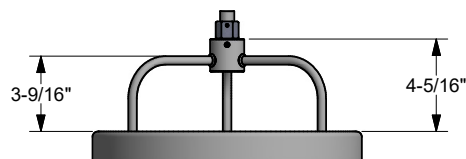
INSTALL IN ACCORDANCE WITH ALL APPLICABLE NATIONAL AND LOCAL ELECTRIC CODES
INSTALL IN ACCORDANCE WITH ALL MARKINGS APPEARING ON OR INSIDE LUMINAIRES



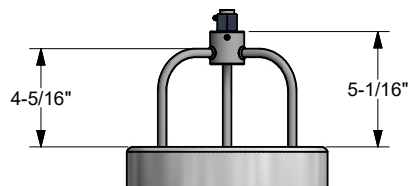
MOUNTING OPTIONS FOR DIRECT / INDIRECT INDOOR LUMINAIRES



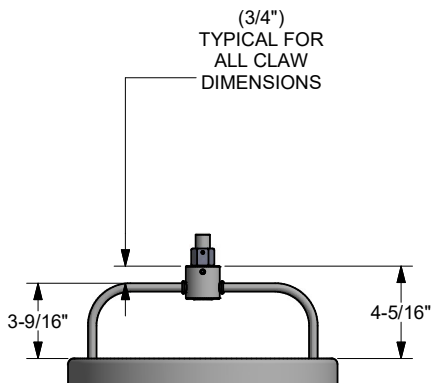
**TRIPOD CLAW DIMENSIONS FOR A
STANDARD 14.5" x 24.5" CYLINDER**



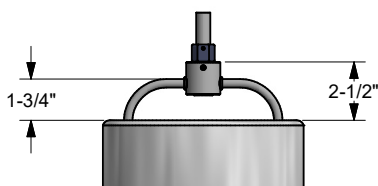
**TRIPOD CLAW DIMENSIONS FOR A
STANDARD 12" x 16" CYLINDER**



**TRIPOD CLAW DIMENSIONS FOR A
STANDARD 9" x 13.5" CYLINDER**

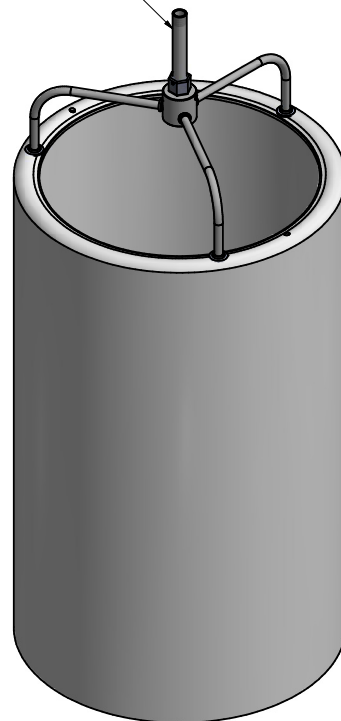


**BIPOD CLAW DIMENSIONS FOR A
STANDARD 12" x 16" CYLINDER**



**BIPOD CLAW DIMENSIONS FOR A
STANDARD 9" x 13.5" CYLINDER**

INSTALL AS TYPICAL
-PM (PENDANT MOUNT)
OR -88 (SWIVEL MOUNT)
(REFER TO SHEET # 2)

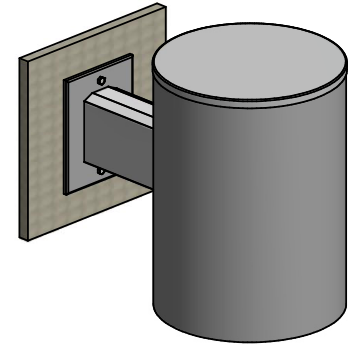
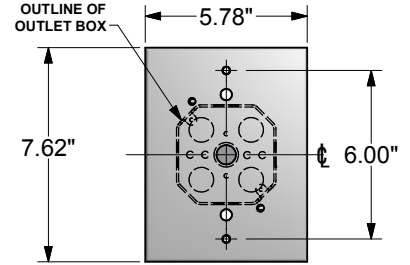
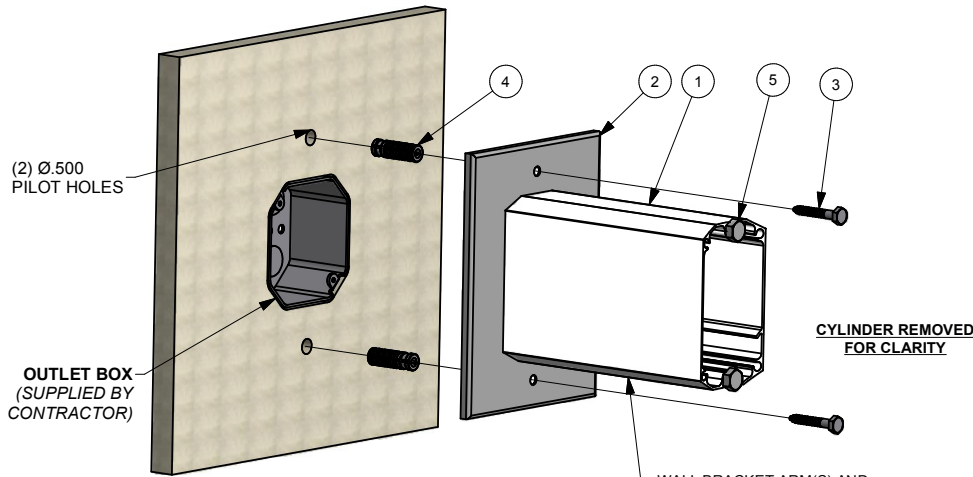


**DIRECT / INDIRECT MOUNTING
CYLINDER REFERENCE**

INSTALL IN ACCORDANCE WITH ALL APPLICABLE NATIONAL AND LOCAL ELECTRIC CODES
INSTALL IN ACCORDANCE WITH ALL MARKINGS APPEARING ON OR INSIDE LUMINAIRES

MOUNTING STYLE #1

(WALL ANCHOR MOUNT - SINGLE ARM)
LUMINAIRES MOUNTED IN THIS STYLE ARE **HEAVY!!**
DO NOT ATTEMPT TO MOUNT DIRECTLY TO J-BOX!!!

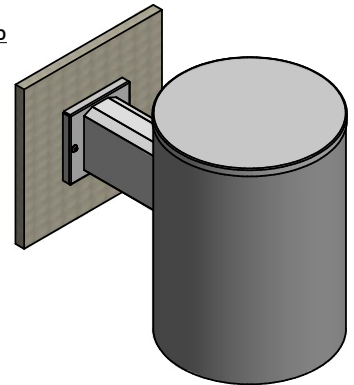
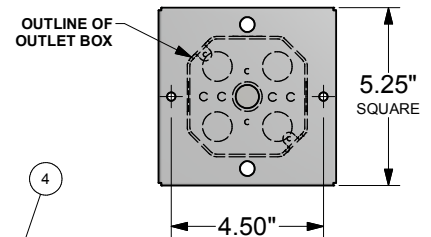
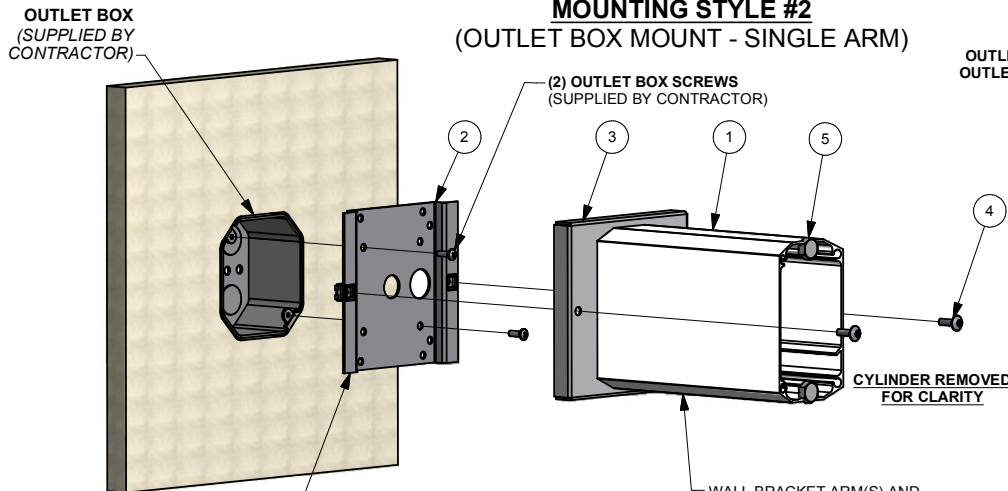


ALL COMPONENTS SUPPLIED BY
THE KIRLIN COMPANY UNLESS
OTHERWISE SPECIFIED

Parts List		
ITEM	QTY	DESCRIPTION
1	1	WALL BRACKET ARM
2	1	WALL MOUNTING PLATE
3	2	LAG BOLT 1/4 X 1.75
4	2	LAG SHIELD (ANCHOR)
5	4	SCREW: 3/8-16 x 1"

MOUNTING STYLE #2

(OUTLET BOX MOUNT - SINGLE ARM)



**WALL PLATE WILL MOUNT
DIRECTLY TO THE FOLLOWING**

OUTLET BOXES:
4" OCTAGON
3-1/2" OCTAGON
4" SQUARE
4-11/16" SQUARE

ALL COMPONENTS SUPPLIED BY
THE KIRLIN COMPANY UNLESS
OTHERWISE SPECIFIED

Parts List		
ITEM	QTY	DESCRIPTION
1	1	WALL BRACKET ARM
2	1	OUTLET BOX MOUNTING PLATE
3	1	WALL PLATE COVER
4	2	SCREW: 10-24 X .625
5	4	SCREW: 3/8-16 x 1"

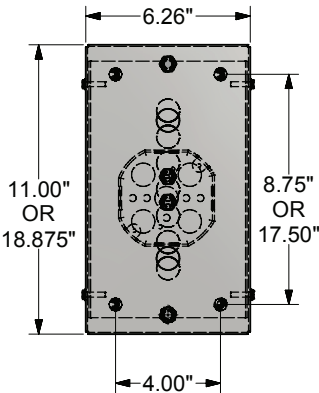
INSTALL IN ACCORDANCE WITH ALL APPLICABLE NATIONAL AND LOCAL ELECTRIC CODES
INSTALL IN ACCORDANCE WITH ALL MARKINGS APPEARING ON OR INSIDE LUMINAIRES
FOR OUTDOOR INSTALLATIONS, USE SILICONE TO CAULK AROUND ALL EXPOSED SEAMS

IMPORTANT

FOR SOME SURFACES (I.E. SHEETROCK, DRYWALL), ADDITIONAL WALL REINFORCEMENTS MAY BE NECESSARY BY CONTRACTOR TO SUPPORT WEIGHT OF LUMINAIRE

MOUNTING STYLE #3

LUMINAIRES MOUNTED IN THIS STYLE ARE **HEAVY!!**
DO NOT ATTEMPT TO MOUNT DIRECTLY TO J-BOX!!!



(4) Ø.500
PILOT HOLES

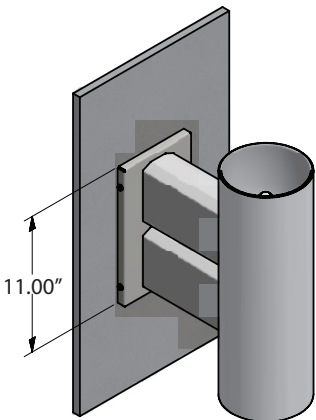
OUTLET BOX
(SUPPLIED BY
CONTRACTOR)

WALL BRACKET ARM(S) AND
MOUNTING PLATE ALWAYS SHIP
FROM KIRLIN ATTACHED TO
LUMINAIRE. IN SOME DESIGNS,
THE ARM(S) WILL CONTAIN
ELECTRICAL COMPONENTS.

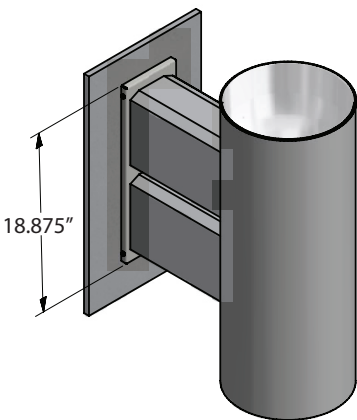
ALL COMPONENTS SUPPLIED BY
THE KIRLIN COMPANY UNLESS
OTHERWISE SPECIFIED

Parts List		
ITEM	QTY	DESCRIPTION
1 *	2	WALL BRACKET ARM
2 *	1	WALL MOUNTING PLATE
3	1	WALL PLATE COVER
4	4	LAG BOLT: 1/4 x 1.75
5	4	LAG SHIELD (ANCHOR)
6 *	8	SCREW: 3/8-16 x 1"
7 *	4	SCREW: 10-32 x .750

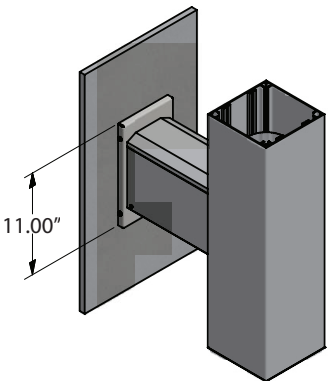
* = ACTUAL PART MAY DIFFER IN SIZE/QUANTITY



**DOUBLE SMALL ARM
ASSEMBLY**
(AS SHOWN ABOVE)



**DOUBLE LARGE ARM
ASSEMBLY**



**SINGLE LARGE ARM
ASSEMBLY**

FULLY ASSEMBLED VIEWS

(SHOWN WITH VARIOUS DESIGNS
FOR REFERENCE)

INSTALL IN ACCORDANCE WITH ALL APPLICABLE NATIONAL AND LOCAL ELECTRIC CODES
INSTALL IN ACCORDANCE WITH ALL MARKINGS APPEARING ON OR INSIDE LUMINAIRES
FOR OUTDOOR INSTALLATIONS, USE SILICONE TO CAULK AROUND ALL EXPOSED SEAMS