

CATALOG #	TYPE	
JOB NAME	WATTAGE	VOLTAGE

Choice Series

Ligature & Vandal 4" Downlight • COB LED

50,000+ Hours • Type IC • 1.0% Dimming, 0-10V
2 or 3 Step Binning • Wet Listed • LM-80 and LM-79 Certified

Specifications

Delivered System Performance

- Nominal Lumens: **Must Specify**
- Type IC**
- 2500L
- 2000L
- 1500L
- 1000L
- Select trim & beam distribution: see chart
- Select color (CCT): see chart; 80+ CRI standard; Option -HC for 90+ (15% lumen loss)
- 60,000 hour life, 50,000 in insulation

Thermal Management System

- Aluminum heat sink and components for cool operation, long life, and low maintenance

LED Driver - INTERNAL

- Indoor/Outdoor: -30°C to 60°C (-22°F to 140°F)
- 0-10V CCR 1.0% dimming standard
- Voltage Options: **Must Specify**
- UNV - 120-277V (50-60Hz); load insensitive
- 120: -120V (50-60Hz); load insensitive

IK10-Rated Trim/Lens Assembly

- Ligature resistant smooth tapered self-flanged cast aluminum trim (-RWF is field paintable)
- Tamperproof screws, captive nuts secure trim to housing; tamperproof tool included
- Diffuse acrylic lens above .220" clear polycarbonate; also see Option -WA

Acrylic Enamelled Aluminum Housing

- Rustproof: exceeds 1000 hour ASTM 5% salt spray test; all components fully sustainable
- Shallow depth fits restricted plenums
- Cool operation extends component life
- Modular design; visible and fully serviceable through aperture

Outlet Box (Galvanized)

- UL Listed, 14GA, insulated, removable cover
- 1/2" and 3/4" knockouts
- Up to 4 #12 AWG through-branch conductors

LRC-04VND

Trim Options



-RWF



-SQR

Installation & Hardware

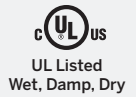
- Indoor/outdoor in ceilings up to 1 1/8" thick
- Compatible with fire rated enclosures (by others)
- 27" hanger bars & adjusting brackets (2) supplied

UL, C-UL (Canada) & FCC Compliance

- UL listed Type IC: up to -2500L
- FCC Part 15 certified for EMI/RFI emissions

FIVE YEAR Limited Warranty

- Complete standard fixture



Options and Ordering Configuration

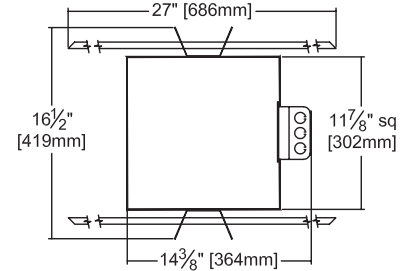
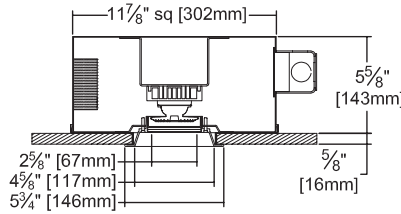
(Example: LRC-04VND-2500L-120-RWF-MFL-30K-BG-FS)

Must Specify						Optional			
Model	Lumens	Volts	Trim	Beam	CCT [†] & CRI	Driver Options	Emergency Options	Trim Options	Other Options
LRC-04VND									
	Type IC	-UNV	-RWF	-SPT	80+ CRI*	(Blank): Standard 0-10V CCR 1.0% dim	(Blank): None	(Blank): Standard trim finish; see photos above	(Blank): None
	-2500L	-120	-SQR	-NFL	-27K: 2700°K	-D6: Triac/ELV dim - 120 volt only	-EI: Remote emergency inverter for 100% rated lumens up to -2500L; 90+ minutes; N/A for options -29 or -FS -ERH: Remote emergency battery pack; Delivers 1000 lumens; CEC Compliant; 90+ minutes	Trim Finishes (-RWF Only) -35T: Silver enamel trim -37T: Dark bronze enamel trim -38T: Black enamel trim -94: Custom color; consult factory -BG: BioGard™ anti-microbial white Other Trim Features -CF: Custom color filter (Rosco); Specify -166: IP66 rated trim and lens; Meets ASTM E283 restricted airflow of 2CFM; Natatorium rated -WA: White acrylic (flat) diffuser instead; with -WFL beam only	Other Options -99: Special modification; consult factory -FS: Fused primary; One per fixture; N/A for Options -EI -SH: Cleanroom rated ISO 5 Class 100 luminaire; Sealed housing, J-Box, trim assembly
	-2000L			-MFL	-30K: 3000°K				
	-1500L			-WFL	-35K: 3500°K				
	-1000L				-40K: 4000°K				
					-50K: 5000°K				
					*Note: Lumen Factor = 0.93 for -27K				
					90+ CRI**				
					-27K-HC: 2700°K				
					-30K-HC: 3000°K				
					-35K-HC: 3500°K				
					-40K-HC: 4000°K				
					-50K-HC: 5000°K				
					**Note: Lumen Factor = 0.79 for -27K-HC; All Others = 0.85				
					† For 2 SDCM, consult factory				

Performance Factors

NOMINAL LUMENS	LUMEN FACTOR	NOMINAL WATTS	LPW FACTOR
-2500L	1.00	27.0	1.00
-2000L	0.89	24.3	0.99
-1500L	0.76	20.4	1.01
-1000L	0.41	10.5	1.05

Dimensions



Ceiling Cut-out
5" Dia.

* See notes on page 1 for additional info on Lumen Factors

Photometry - Installed Complete Fixture

Photometry from L.L.I., Allentown, PA

LM-79 IESNA Certified Photometry from Light Labs, International

<p>-2500L-RWF-SPT</p> <p>Cone of Light ▲</p> <table border="1"> <thead> <tr> <th>Dist.</th> <th>FC</th> <th>Dia.</th> </tr> </thead> <tbody> <tr><td>6</td><td>220.9</td><td>2.7</td></tr> <tr><td>8</td><td>124.3</td><td>3.6</td></tr> <tr><td>10</td><td>79.5</td><td>4.5</td></tr> <tr><td>12</td><td>55.2</td><td>5.4</td></tr> <tr><td>14</td><td>40.6</td><td>6.3</td></tr> <tr><td>16</td><td>31.1</td><td>7.2</td></tr> </tbody> </table>	Dist.	FC	Dia.	6	220.9	2.7	8	124.3	3.6	10	79.5	4.5	12	55.2	5.4	14	40.6	6.3	16	31.1	7.2	<p>Lumens: 2277 LPW: 84 Beam: ~27° SC: 0.4 LLI Test: 1511-014</p>	<table border="1"> <thead> <tr> <th>Nominal Lumens</th> <th>Actual Lumens</th> <th>Actual LPW</th> </tr> </thead> <tbody> <tr> <td>2500L</td> <td>2277</td> <td>84.3</td> </tr> <tr> <td>2000L</td> <td>2015</td> <td>82.9</td> </tr> <tr> <td>1500L</td> <td>1737</td> <td>85.2</td> </tr> <tr> <td>1000L</td> <td>922</td> <td>87.8</td> </tr> </tbody> </table>	Nominal Lumens	Actual Lumens	Actual LPW	2500L	2277	84.3	2000L	2015	82.9	1500L	1737	85.2	1000L	922	87.8
Dist.	FC	Dia.																																				
6	220.9	2.7																																				
8	124.3	3.6																																				
10	79.5	4.5																																				
12	55.2	5.4																																				
14	40.6	6.3																																				
16	31.1	7.2																																				
Nominal Lumens	Actual Lumens	Actual LPW																																				
2500L	2277	84.3																																				
2000L	2015	82.9																																				
1500L	1737	85.2																																				
1000L	922	87.8																																				
<p>-2500L-RWF-NFL</p> <p>Cone of Light ▲</p> <table border="1"> <thead> <tr> <th>Dist.</th> <th>FC</th> <th>Dia.</th> </tr> </thead> <tbody> <tr><td>6</td><td>163.6</td><td>3.2</td></tr> <tr><td>8</td><td>92.0</td><td>4.3</td></tr> <tr><td>10</td><td>58.9</td><td>5.4</td></tr> <tr><td>12</td><td>40.9</td><td>6.4</td></tr> <tr><td>14</td><td>30.1</td><td>7.5</td></tr> <tr><td>16</td><td>23.0</td><td>8.6</td></tr> </tbody> </table>	Dist.	FC	Dia.	6	163.6	3.2	8	92.0	4.3	10	58.9	5.4	12	40.9	6.4	14	30.1	7.5	16	23.0	8.6	<p>Lumens: 2194 LPW: 81 Beam: ~32° SC: 0.5 LLI Test: 1511-015</p>	<table border="1"> <thead> <tr> <th>Nominal Lumens</th> <th>Actual Lumens</th> <th>Actual LPW</th> </tr> </thead> <tbody> <tr> <td>2500L</td> <td>2194</td> <td>81.3</td> </tr> <tr> <td>2000L</td> <td>1942</td> <td>79.9</td> </tr> <tr> <td>1500L</td> <td>1674</td> <td>82.1</td> </tr> <tr> <td>1000L</td> <td>889</td> <td>84.6</td> </tr> </tbody> </table>	Nominal Lumens	Actual Lumens	Actual LPW	2500L	2194	81.3	2000L	1942	79.9	1500L	1674	82.1	1000L	889	84.6
Dist.	FC	Dia.																																				
6	163.6	3.2																																				
8	92.0	4.3																																				
10	58.9	5.4																																				
12	40.9	6.4																																				
14	30.1	7.5																																				
16	23.0	8.6																																				
Nominal Lumens	Actual Lumens	Actual LPW																																				
2500L	2194	81.3																																				
2000L	1942	79.9																																				
1500L	1674	82.1																																				
1000L	889	84.6																																				
<p>-2500L-RWF-MFL</p> <p>Cone of Light ▲</p> <table border="1"> <thead> <tr> <th>Dist.</th> <th>FC</th> <th>Dia.</th> </tr> </thead> <tbody> <tr><td>6</td><td>75.0</td><td>4.8</td></tr> <tr><td>8</td><td>42.2</td><td>6.4</td></tr> <tr><td>10</td><td>27.0</td><td>8.0</td></tr> <tr><td>12</td><td>18.8</td><td>9.6</td></tr> <tr><td>14</td><td>13.8</td><td>11.2</td></tr> <tr><td>16</td><td>10.5</td><td>12.8</td></tr> </tbody> </table>	Dist.	FC	Dia.	6	75.0	4.8	8	42.2	6.4	10	27.0	8.0	12	18.8	9.6	14	13.8	11.2	16	10.5	12.8	<p>Lumens: 1978 LPW: 73 Beam: ~49° SC: 0.8 LLI Test: 1511-016</p>	<table border="1"> <thead> <tr> <th>Nominal Lumens</th> <th>Actual Lumens</th> <th>Actual LPW</th> </tr> </thead> <tbody> <tr> <td>2500L</td> <td>1978</td> <td>73.3</td> </tr> <tr> <td>2000L</td> <td>1751</td> <td>72.0</td> </tr> <tr> <td>1500L</td> <td>1509</td> <td>74.0</td> </tr> <tr> <td>1000L</td> <td>801</td> <td>76.3</td> </tr> </tbody> </table>	Nominal Lumens	Actual Lumens	Actual LPW	2500L	1978	73.3	2000L	1751	72.0	1500L	1509	74.0	1000L	801	76.3
Dist.	FC	Dia.																																				
6	75.0	4.8																																				
8	42.2	6.4																																				
10	27.0	8.0																																				
12	18.8	9.6																																				
14	13.8	11.2																																				
16	10.5	12.8																																				
Nominal Lumens	Actual Lumens	Actual LPW																																				
2500L	1978	73.3																																				
2000L	1751	72.0																																				
1500L	1509	74.0																																				
1000L	801	76.3																																				
<p>-2500L-RWF-WFL</p> <p>Cone of Light ▲</p> <table border="1"> <thead> <tr> <th>Dist.</th> <th>FC</th> <th>Dia.</th> </tr> </thead> <tbody> <tr><td>6</td><td>58.9</td><td>4.6</td></tr> <tr><td>8</td><td>33.1</td><td>6.2</td></tr> <tr><td>10</td><td>21.2</td><td>7.7</td></tr> <tr><td>12</td><td>14.7</td><td>9.3</td></tr> <tr><td>14</td><td>10.8</td><td>10.8</td></tr> <tr><td>16</td><td>8.3</td><td>12.4</td></tr> </tbody> </table>	Dist.	FC	Dia.	6	58.9	4.6	8	33.1	6.2	10	21.2	7.7	12	14.7	9.3	14	10.8	10.8	16	8.3	12.4	<p>Lumens: 1877 LPW: 69 Beam: ~52° SC: 0.8 LLI Test: 1511-017</p>	<table border="1"> <thead> <tr> <th>Nominal Lumens</th> <th>Actual Lumens</th> <th>Actual LPW</th> </tr> </thead> <tbody> <tr> <td>2500L</td> <td>1877</td> <td>69.3</td> </tr> <tr> <td>2000L</td> <td>1661</td> <td>68.4</td> </tr> <tr> <td>1500L</td> <td>1432</td> <td>70.2</td> </tr> <tr> <td>1000L</td> <td>760</td> <td>72.4</td> </tr> </tbody> </table>	Nominal Lumens	Actual Lumens	Actual LPW	2500L	1877	69.3	2000L	1661	68.4	1500L	1432	70.2	1000L	760	72.4
Dist.	FC	Dia.																																				
6	58.9	4.6																																				
8	33.1	6.2																																				
10	21.2	7.7																																				
12	14.7	9.3																																				
14	10.8	10.8																																				
16	8.3	12.4																																				
Nominal Lumens	Actual Lumens	Actual LPW																																				
2500L	1877	69.3																																				
2000L	1661	68.4																																				
1500L	1432	70.2																																				
1000L	760	72.4																																				

LED manufacturers maintain a tolerance of +/-7% on flux (lumens) and power (electrical) measurements.

▲ Cone of Light Key Dist. Distance (Ft.) from fixture
Dia. (in ft.) shown is where FC FC Footcandles at nadir (0°)
value is half the FC at nadir. Dia. Circle of light at 50% of FC

LIMITED WARRANTY: KIRLIN ARCHITECTURAL LIGHTING FIXTURES ARE WARRANTED FREE OF DEFECTS IN WORKMANSHIP OR MATERIAL FOR FIVE YEARS FROM DATE OF PURCHASE. INSTALLATION MUST BE IN ACCORDANCE WITH THE MANUFACTURER'S INSTRUCTIONS. THE WARRANTY IS VOID IF THE FIXTURE IS NOT INSTALLED IN ACCORDANCE WITH THE MANUFACTURER'S INSTRUCTIONS. THE WARRANTY DOES NOT COVER DAMAGE TO THE FIXTURE OR TO OTHER LIGHTING FIXTURES CAUSED BY IMPROPER INSTALLATION, OVERLOADING, OR MISUSE. THE WARRANTY IS VOID IF THE FIXTURE IS NOT INSTALLED IN ACCORDANCE WITH THE MANUFACTURER'S INSTRUCTIONS. THE WARRANTY DOES NOT COVER DAMAGE TO THE FIXTURE OR TO OTHER LIGHTING FIXTURES CAUSED BY IMPROPER INSTALLATION, OVERLOADING, OR MISUSE. THE WARRANTY IS VOID IF THE FIXTURE IS NOT INSTALLED IN ACCORDANCE WITH THE MANUFACTURER'S INSTRUCTIONS. THE WARRANTY DOES NOT COVER DAMAGE TO THE FIXTURE OR TO OTHER LIGHTING FIXTURES CAUSED BY IMPROPER INSTALLATION, OVERLOADING, OR MISUSE.

CHOICE SERIES
JAN 2023