



Lighting for Safety and Comfort in
Behavioral Health Spaces



SCOTT

Regional Sales Manager, Central



CHAD

National Sales Manager



AMANDA

Director of Marketing



CHRIS

President



RICH

Regional Sales Manager, West

Top Goals in Behavioral Health Lighting

- 1 Prevent suicide and self-harm**
- 2 Prevent harm to others**
- 3 Create an environment for healing**

Behavioral Healthcare Trends

1. Reducing Stigma
2. Calming Emergency Departments
3. Adaptable Treatment Rooms
4. Hospitality-Inspired Designs
5. Community-Building
6. Neighborhood Integration
7. Prioritization of Staff Well-Being
8. Light, Temperature, Sound
9. Closed-Loop Care
10. Design for Rehabilitation
11. Considerations for Veterans and the Homeless



welcome



B

**Hospitality-
Inspired
Design**



FGI

bhfc Behavioral Health
Facility Consulting

Light, Temperature, Sound

- Control of their light levels and light color
- Control over room temperature
- Access to nature and natural light
- Physical access to outdoor environments



Risk Levels



LOWEST RISK



HIGHEST RISK

Level I

Staff & Service Areas



Level II

Counseling & Interview Rooms



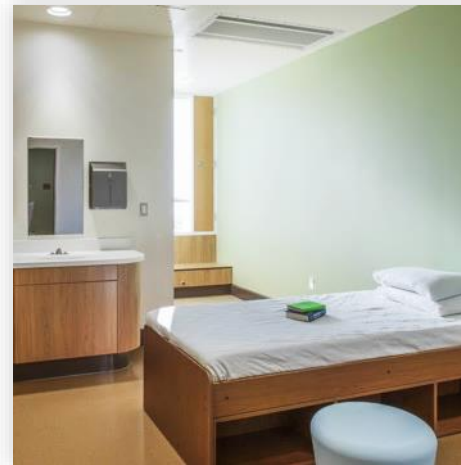
Level III

Corridors, Lounges, Activity Rooms



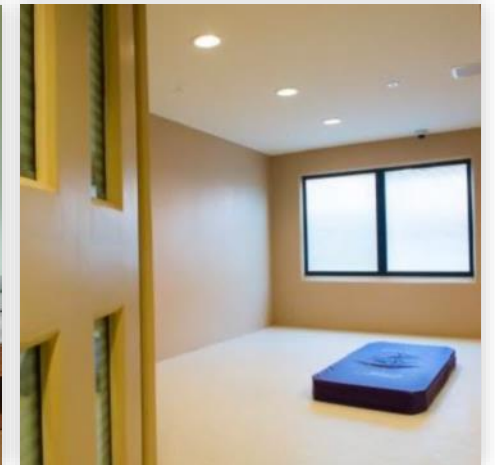
Level IV

Patient & Toilet Rooms



Level V

Admission & Seclusion Rooms



LOW RISK

No patient use or constantly supervised

MEDIUM RISK

Patient access is controlled, or use is supervised with no solitary and/or unsupervised use

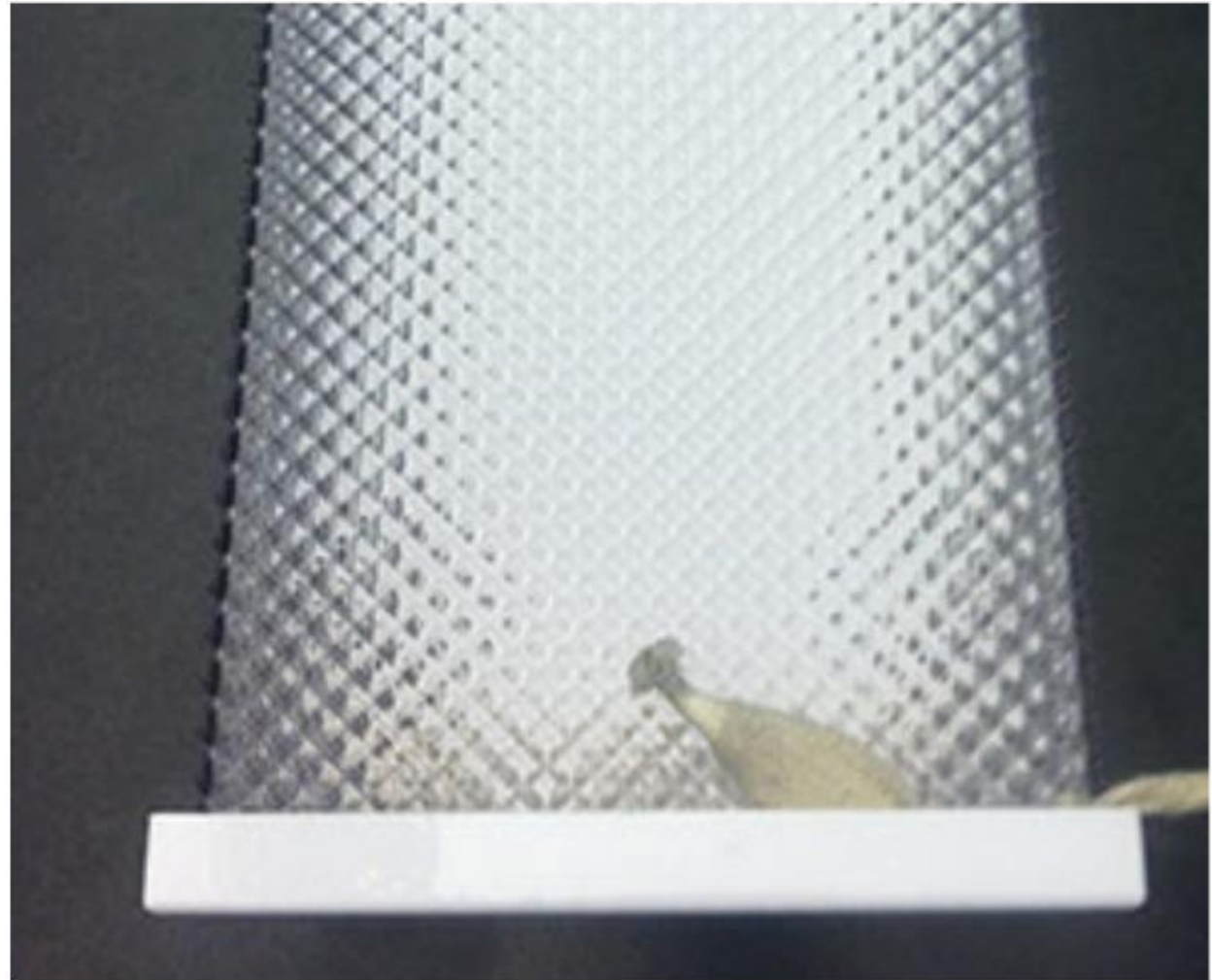
HIGH RISK

Areas with solitary and/or unsupervised patient use

NYOMH

Product Evaluation

- Primary Criteria
 - Ligature Resistance: Looping
 - Ligature Resistance: Wedging
 - Cutting
 - Jumping
 - Tamper Resistance
 - Weaponization
 - Contraband Storage
 - Ingestion
- Paperclip Testing



NYOMH Approved Fixtures



The Kirlin Company

www.kirlinlighting.com

LRR-06020 6" LED Downlight

Size: 6"

Required Options: -25 (vandal resistant trim, hardware and lensing)

Mounting: drywall ceilings

Inner Lens: high strength prismatic acrylic

Outer Lens: 0.125" clear flat polycarbonate

Housing: acrylic enameled aluminum housing; seamless tapered aluminum self-flanged rigid cast trim

Finish: standard white



The Kirlin Company

www.kirlinlighting.com

Vandal Resistant Downlight, LRV-07469 (7") & LRV-08470 (8")

Size: 7", 8" aperture (shallow plenum applicable)

Mounting: drywall ceilings

Inner Lens: clear prismatic acrylic

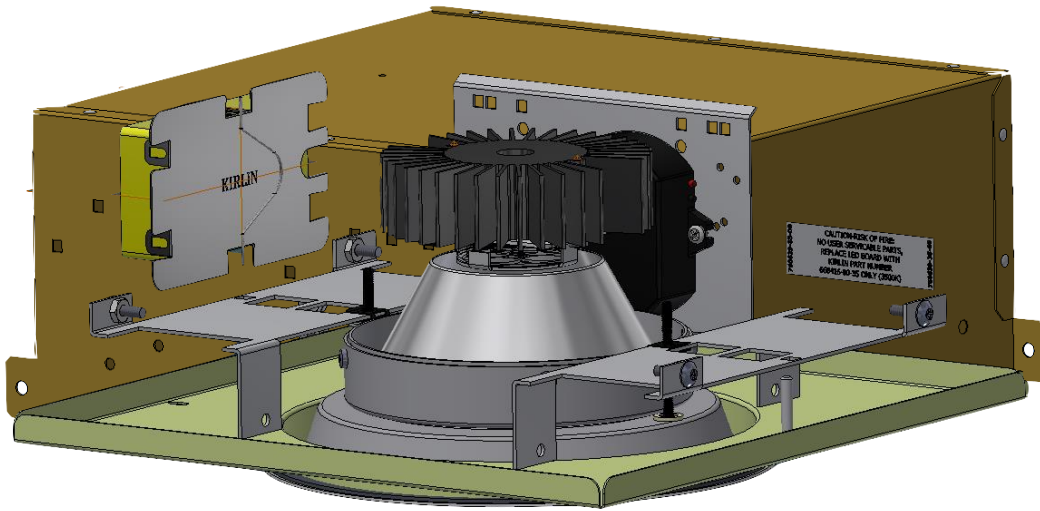
Outer Lens: 0.125" clear flat polycarbonate

Housing: vandal resistant smooth white seamless tapered aluminum self-flanged flare trim

Finish: standard



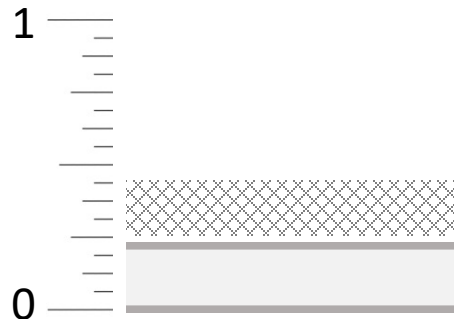
What's Inside



SINGLE PIECE, SELF-FLANGED TRIM



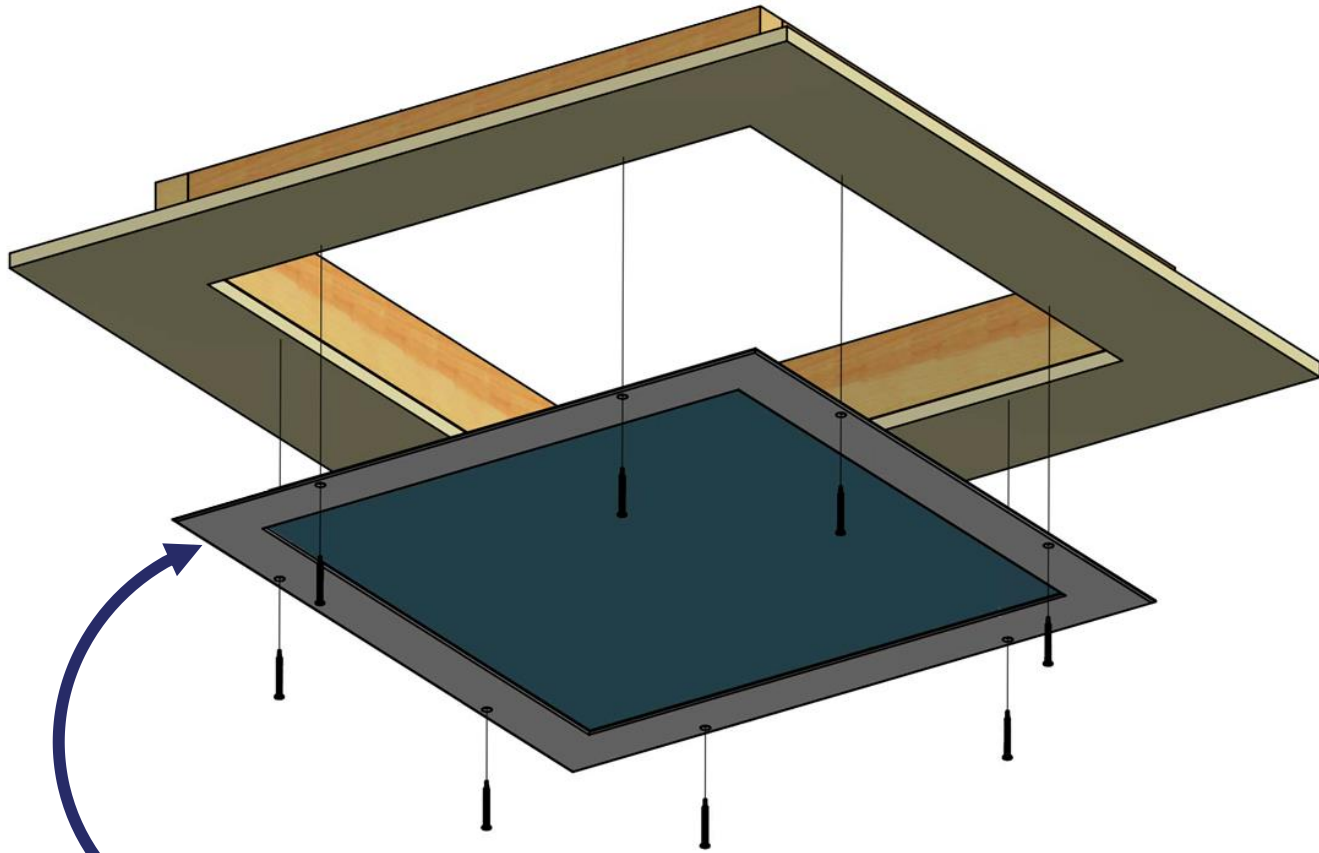
TAMPER-RESISTANT HARDWARE



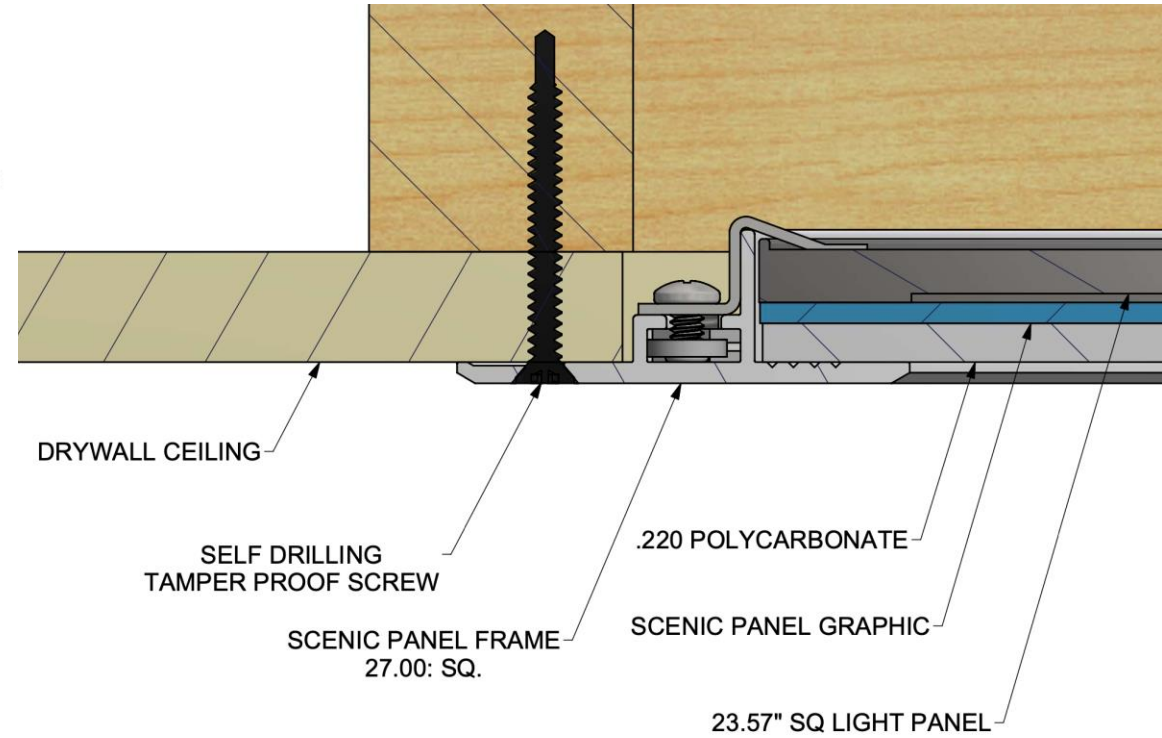
HIGH-STRENGTH DUAL LENS

0.1875" high strength acrylic above
0.22" polycarbonate below

Vandal & Ligature-Resistant



Single piece, seam-welded aluminum frame



DRYWALL CEILING

SELF DRILLING
TAMPER PROOF SCREW

SCENIC PANEL FRAME
27.00: SQ.

.220 POLYCARBONATE

SCENIC PANEL GRAPHIC

23.57" SQ LIGHT PANEL

A photograph of a modern hospital building at night. The building features a prominent curved glass facade that reflects the interior lights, showing multiple levels with patient rooms and a central atrium. The sky is dark blue, and the building's exterior is lit with a cool blue tone. A large, semi-transparent blue geometric shape is overlaid on the right side of the image. The text 'Patient Rooms' is written in a bold, white, sans-serif font on the left side of the image.

Patient Rooms



Patient Room

- Small-aperture ambient lighting
- Task-specific lighting



Task Lighting

- Hitsville
- 2 shapes
- Aimable optic
- Multiple beam spreads
- Touch dimming option

**Video of
task light-
Chris**



Night Lighting

- Behavioral Health option
- Photocell option
- Dimmable
- White, amber, color filter options

**Video of
night light-
Scott**

A modern patient room featuring a bed with white linens and a green book, a sink with a mirror and paper towel dispenser, and a green accent wall. The room is well-lit with recessed ceiling lights and a large window.

Patient Room

- Downlights
- Shower light
- Red/Amber wayfinding
- Task lighting

Behavioral Health Downlights

4" Aperture



- 800 - 2000 lumens
- 5 color temperatures
- IP66

6" Aperture



- 950 - 6500 lumens
- 5 color temperatures plus tunable white
- IP66

7" / 8" Aperture



- 1900 - 6200 lumens
- 5 color temperatures plus color specific wavelengths
- IP65



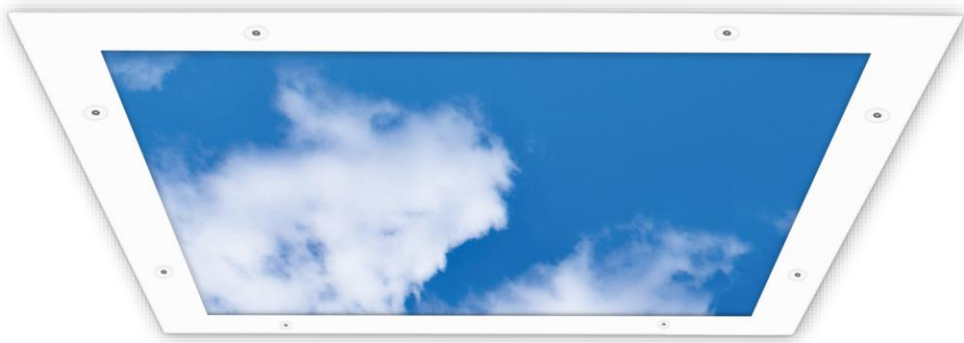
Patient Rooms

- White panels create skylight effect



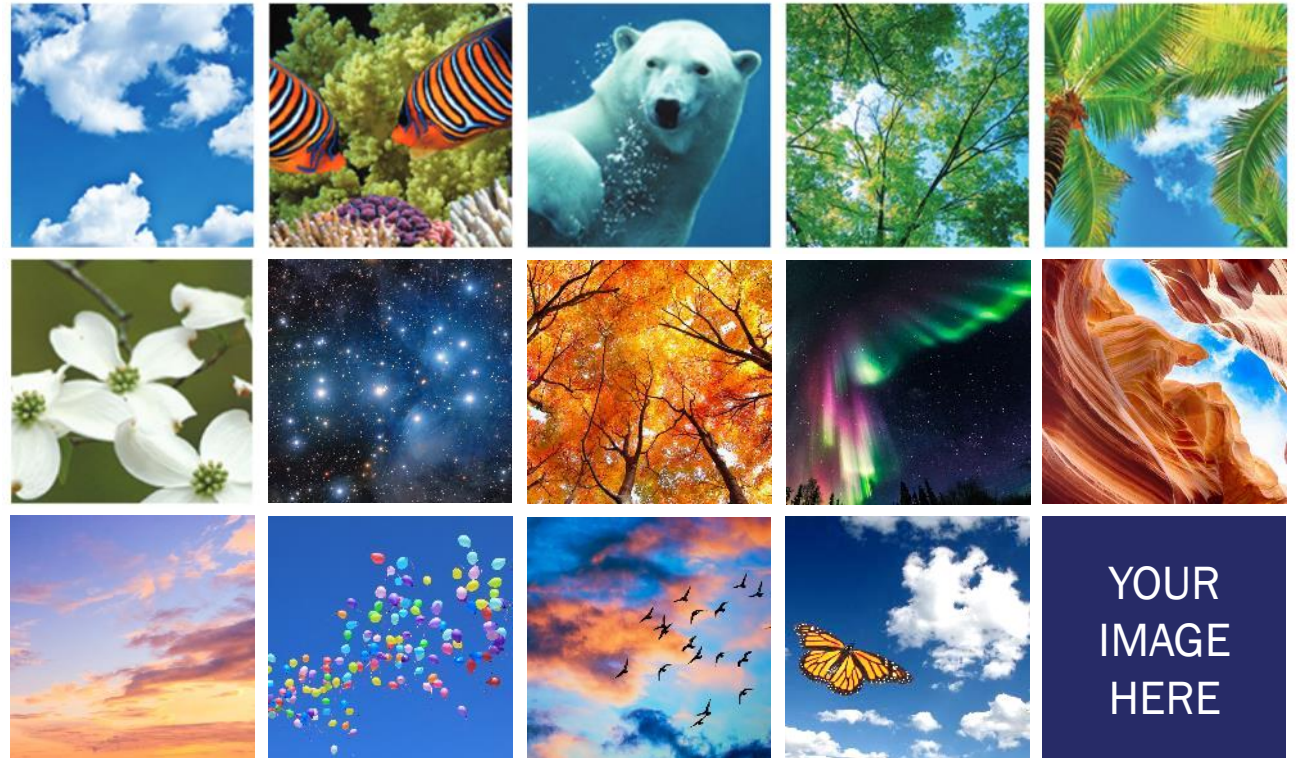
Patient Rooms

- Scenic panels provide views of nature



Scenic Panels

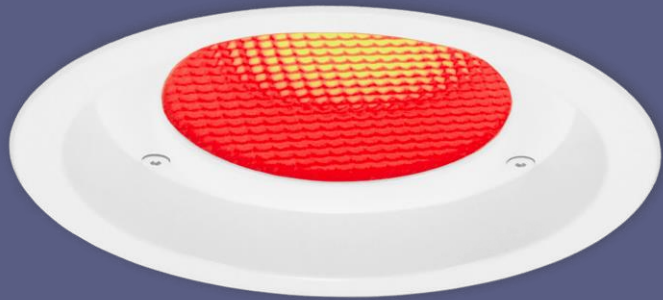
- 14 Standard Images
- Submit your own
- Soothing and distracting skylight effect



Observation Lighting

Observation Lighting

- MRV-06864
- Orange/Yellow or Orange/Red for Circadian support
- 500 lumens



Observation Lighting





Patient Restroom

- Hospitality look
- MRV-07715
- Dead-front shower light



Public Spaces



Activity Rooms

- Warm, joyful feel
- Hospitality lean

Corridors

- MNS-05924
- Good use of color
- Visual interest



Exam Rooms



Procedural Lighting

INFRALED PRO 35V



Enhanced Visual Acuity

- 360° rotation and up to 35° tilt for lighting on visual exam site
- Fully dimmable & remote-adjustable



A Safer Environment

- Ligature and vandal-resistant solution
- Fully recessed, IP66 rated, with sealed housing
- Sterile and easy to clean with anti-microbial finish



Improved Patient Comfort

- Replaces bright overhead troffers



Exam Rooms

Exam Light

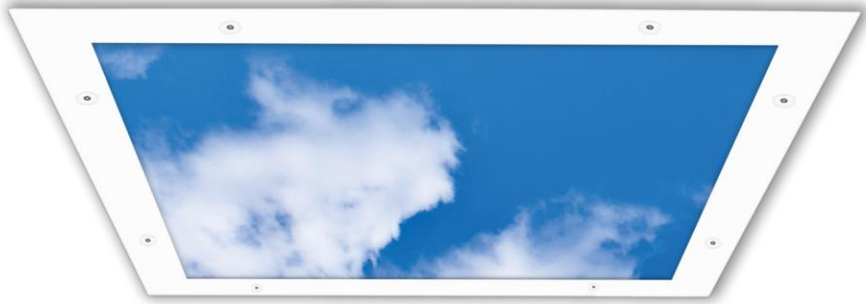
- 7" or 8" solutions
- IP65
- Fixed and Adjustable solutions





Nurses Stations

- Ambient Lighting
- Task Lighting



Staff Areas

- Lower risk
- Prioritize well-being



A modern building at night with a large glass facade. The building features a prominent curved glass section on the right side, which is brightly lit from within, revealing interior levels and a red curved structure. The rest of the building is dark, with some windows reflecting the night sky. A large blue diagonal graphic element is overlaid on the right side of the image.

Questions?

KIRLIN

www.kirlinlighting.com