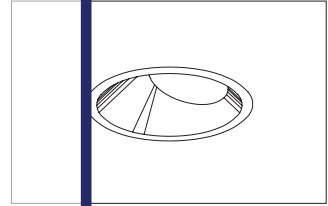


CATALOG #	TYPE	
JOB NAME	WATTAGE	VOLTAGE

6" T6 CERAMIC METAL HALIDE 150 WATT MAXIMUM HRR-06325

Parabolic T6 Adjustable: 3 Springs  
For Dramatic Highlighting

# THIS PRODUCT IS NO LONGER AVAILABLE



6" Dual Reflector Design

## Specifications

### Lamp

- Designed for adjustable T6 bi-pin ceramic metal halide lamp.
- Up to 96 CFM, 12,000-15,000 hour life.
- For lower wattages, see Option -43.

### Socket (5kV rated)

- G12 bi-pin base.
- Porcelain body. Silicone leads.

### Reflectors

- Upper: Parabolic specular Alzak® aluminum. Swivels 358° tilts up to 45°.
- Lower: Low brightness specular Alzak® aluminum, self-flanged.
- Optional reflector finishes / colors available.

### Lens: UV Absorbing

- Tempered multi-prismatic glass mounted on upper reflector. Standard NFL distribution (0.3 SC).
- See Options for -SPT (0.2 SC) and -MFL (0.6 SC) distributions.

### Electronic Ballast

- Full electronic circuitry provides constant color and constant wattage, ensuring

consistent performance. See the  
input voltage 120V-277V, 50/60 Hz. For  
other voltages, see Options.

- 150 watt standard. Add Option -43 and specify for 100, 70, 50 or T6-100 watt.
- Minimum starting temperature 20°C/-4°F.
- Auto Restart Circuitry: Restarts within 1.5 seconds after a power outage.
- Thermal protection. Power automatically shut-off if rated temperature is exceeded.
- Internally fused.
- Power factor greater than 90%.
- Input current THD less than 15%.
- Maximum 85°C operation. Sound Rated for use in schools.

### Aluminum Housing

- Lightweight. Minimizes ceiling load.
- Cool operation: Extends component life.
- EMI/RFI shielded housing. Low EMI/RFI through removable trim.

- Built-in plaster frame.

### Outlet Box

- Prewired 14 GA (NEC) galvanized steel, UL listed; with removable insulated cover.
- 1/2" and 3/4" knockouts.

### Installation

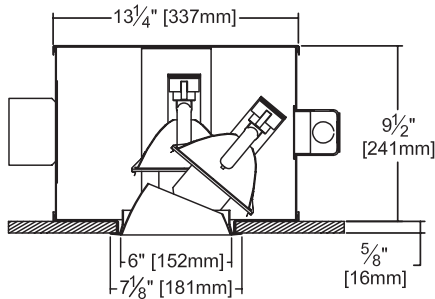
- 27" galvanized hanger bars with adjustable mounting brackets (2) supplied.
- Recesses indoor or outdoor in covered locations.

### UL, C-UL (Canada) Listings

- Wet, damp or dry locations, covered ceilings.
- Through-branch circuit conductors (6 #12). Through-branch circuit conductors (6 #12). Through-branch circuit conductors (6 #12). Through-branch circuit conductors (6 #12).
- Complete standard fixture, including ballast.

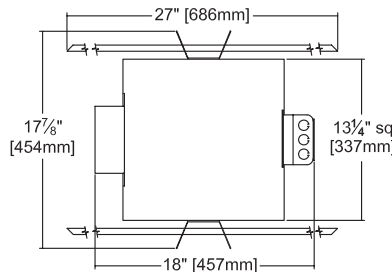
Please consult **QUOTATIONS** for the best alternative.

## Performance at a Glance



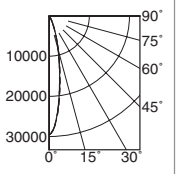
Ceiling Cut-out  
6 1/2" Dia.

PHOTOMETRY  
SHOWN  
STRAIGHT DOWN  
0° TILT



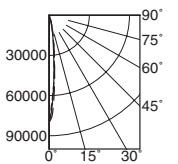
### STANDARD (NFL) DISTRIBUTION

SC: 0.3  
Effic: 41.4%  
ITL Test: 51373



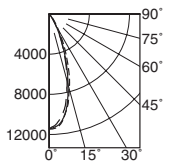
### Option -SPT

SC: 0.2  
Effic: 42.6%  
ITL Test: 51371



### Option -MFL

SC: 0.6  
Effic: 38.0%  
ITL Test: 51372



## THE KIRLIN COMPANY

3401 EAST JEFFERSON AVENUE • DETROIT, MICHIGAN 48207-4232  
(313) 259-6400 • Fax: (313) 259-9409 OR (313) 259-3121 • www.kirlinlighting.com

COMPACT PULSE START  
METAL HALIDE LIGHTING

MAXIMUM WATTAGE

150

CATALOG NUMBER

HRR-06325

DUE TO OUR CONTINUING EFFORT TO IMPROVE PRODUCTS, TECHNICAL INFORMATION IS SUBJECT TO CHANGE WITHOUT NOTICE.

Alzak® is a registered trademark of ALCOA.

