

CATALOG #	TYPE	
JOB NAME	WATTAGE	VOLTAGE

6" T4.5 METAL HALIDE 70 WATT MAXIMUM HRR-06225

Ellipsoidal Open Appearance
Downlight

Features

Lamp

- Designed for vertical T4.5 metal halide lamps. See Option -43 for lower wattage.

Socket

- Vertical. G8.6 bi-pin. Pulse rated.
- Porcelain body. Silicone leads.

Reflectors

- Upper: Ellipsoidal specular Alzak® aluminum.
- Lower: Low brightness parabolic specular Alzak aluminum, self-flanged.
- Fourteen optional reflector finishes available.

Lens

- UV absorbing tempered MicroLux glass mounted to upper reflector. Also see Option -43 for lower wattage.

Ballast Assembly: Specify Voltage

- WhisperPack™ fully encapsulated, 180°C rated HPF pulse start ballast.
- Class H, high reactance for 120 volt. Options -65, -66; linear reactor for 277 volt.
- Capacitor and ignitor supplied.
- Electronic ballast available. See options.
- (Standard for 120 volt.)
- Cool, quiet, long-life. Silicone leads.
- Visible and easily serviced in all ceilings including dry wall.

Fuse

- Fuse printed on lower wattage. See Option -43 for lower wattage.

Aluminum Housing

- Acrylic enameled. Rustproof. Exceeds 1000 hour life.
- Approx. 5% salt crystals.
- Light weight, built-in thermal relief load.
- Control operating methods to prolong life.
- Ventilated.
- Entire luminaire serviced through aperture.
- Built-in plaster frame.

Outlet Box

- Prewired 14 GA (NEC) galvanized steel, UL listed; with removable insulated cover.
- Accepts standard 1/2" and 3/4" outlet boxes.

Installation

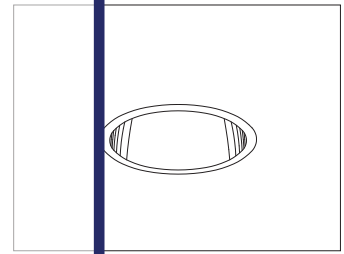
- 27" galvanized hanger bars with adjustable mounting brackets. (Not supplied.)
- Use standard or optional mounting locations.
- UL, C-UL (Canada) Listings
- Wet, damp or dry locations, covered ceilings.
- Thermal protection and conductors (6 AWG).
- UL Listed for use in wet locations.
- Complete standard fixture, including ballast.

Thermal Protection

- Per current NEC.

THIS PRODUCT IS NO LONGER AVAILABLE

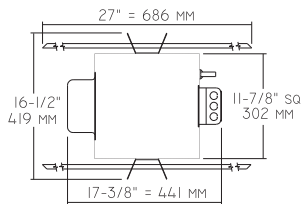
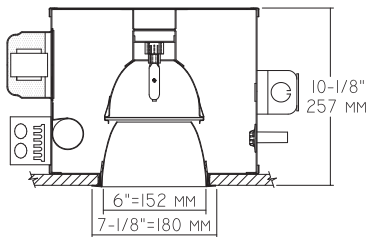
Please consult QUOTATIONS for the best alternative.



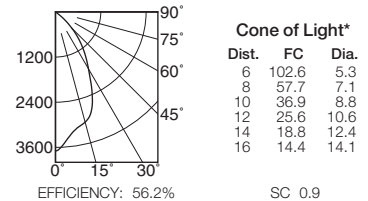
Recessed Round
Open
Appearance
Dual Reflector

Performance at a Glance

HRR-06225



Ceiling Cut-out
6 1/2"



Cone of Light Key

- Ft. Distance from fixture
- FC Footcandles (average)
- Dia. Circle of light at 50% of FC
- * Dia. (in ft.) shown is where FC value is half the FC at nadir.

THE KIRLIN COMPANY

3401 EAST JEFFERSON AVENUE • DETROIT, MICHIGAN 48207-4232
(313) 259-6400 • Fax: (313) 259-9409 OR (313) 259-3121 • www.kirlinlighting.com

**PULSE START
METAL HALIDE LIGHTING**

MAXIMUM WATTAGE

70

CATALOG NUMBER

HRR-06225

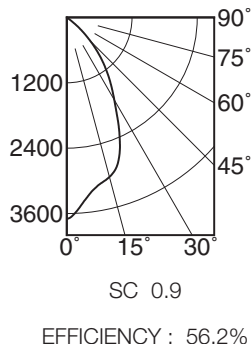
DUE TO OUR CONTINUING EFFORT TO IMPROVE PRODUCTS, TECHNICAL INFORMATION IS SUBJECT TO CHANGE WITHOUT NOTICE.

Alzak® is a registered trademark of ALCOA.

Detailed Photometry - Installed Fixture

Photometry from I.T.L., Boulder, CO

HRR-06225 (T4.5 70 Watt)



CANDLEPOWER DISTRIBUTION					
	0.0	22.5	45.0	67.5	90.0
0	3694	3694	3694	3694	3694
5	3414	3414	3414	3414	3414
15	3032	3032	3032	3032	3032
25	2278	2278	2278	2278	2278
35	1354	1354	1354	1354	1354
45	614	614	614	614	614
55	19	19	19	19	19
65	5	5	5	5	5
75	0	0	0	0	0
85	0	0	0	0	0
90	0	0	0	0	0

COEFFICIENTS OF UTILIZATION							
RF	20						
	80			50			
RC	70	50	30	10	50	30	10
1	64	62	60	59	58	57	56
2	60	57	55	53	54	53	51
3	57	53	50	48	51	48	47
4	54	49	46	43	47	45	43
5	51	46	42	40	44	41	39
6	48	43	39	36	41	38	36
7	45	40	36	34	39	36	33
8	43	37	34	31	36	33	31
9	41	35	31	29	34	31	29
10	39	33	29	27	32	29	27

PRORATED FROM ITL TEST #51361
 HRR-06225: *LER=36.4 •AEC=\$6.60
 HRR-06225-96: *LER=43.9 •AEC=\$5.47

* LER = Luminaire Efficiency Rating

LER = $\frac{\text{Luminaire Effic.} \times \text{Total Lamp Lumens} \times \text{Ballast Factor}}{\text{Input Watts}}$

• AEC = Annual Energy Cost per 1000 lumens (based on 3000 hours use @ \$0.08 KWH).

Options

Ballasts

-96 Regulating electronic MH ballast instead.

Wattage and Voltage

- 43 Lower wattage. For 39 watt standard bi-pin. Specify voltage. For 20 watt (electronic only) system, consult factory.
- 120 120 volt, 60 Hz. ballast.
- 277 277 volt, 60 Hz. ballast.
- 347 347 volt, 60 Hz. ballast. Consult factory for electronic.
- 97 Other voltage ballast instead. Consult factory.

Relays, Standbys, Lamps

- 49 Extra circuit DCB socket. Do not energize simultaneously with main source. Also see Option -LS.
- 65 Electronic standby system and DCB socket. Following HID outage, provides immediate light until HID restrikes. Also see -66 and -LS.
- 66 Electronic time delay standby system and DCB socket. Following outage, provides light until HID reaches 70% output. Also see Option -LS.

- LP With lamp. Specify wattage and color temperature. (3000°K standard for MH)
- LS With T4 DCB tungsten halogen standby lamp. Use only with Options -49, -65 or -66.

Reflectors and Trims (Self-Flanged)

- 16 Champagne Gold specular Alzak lower cone. (CP x .95)
- 30 All White lower cone or cross baffle.
- 31 White flange (only) on lower cone or cross baffle. (CP x .95)
- 32 White oversize trim ring. Specify O.D.
- 45 Gasket above reflector flange. Stops dust streaks on ceiling.
- 63 Dune specular Alzak lower cone. (CP x .93)
- 69 Wheat specular Alzak lower cone. (CP x .92)
- 70 SofTex Clear etched lower cone. (CP x .92)
- 71 SofTex Dune etched lower cone. (CP x .89)
- 72 Black specular Alzak lower cone. (CP x .77)
- 77 SofTex Pewter etched lower cone. (CP x .85)
- 90 SofTex Champagne Gold etched lower cone. (CP x .90)
- 91 SofTex Wheat etched lower cone. (CP x .88)
- 92 Umber specular Alzak lower cone. (CP x .83)

- 93 Pewter specular Alzak lower cone. (CP x .88)
- 94 Custom color reflector or cross baffle. Consult factory.
- OG OptiGroove black tapered aluminum lower cone. White trim. (CP x .75)

Lenses

- 15 Prismatic C#73 flat glass lens instead.
- 28 UV absorbing clear tempered glass instead.

Mounting Options

- 79 Extension collar for up to 2" thick ceilings.
- 82 Sloped ceiling adapter, with mounting hardware. Specify 5° increments up to 30°.
- 85 Ceiling Panel; with recessed fixture hole. Lays-in 2" x 2" grid. White.

Other Options

- 99 Special modification. Consult factory.
- SP Shallow plenum (7-5/8" depth). Horizontal lamp.
- TA Top access; for servicing from above ceiling.

SUBMITTAL DATA

APPROVAL STAMP

JOB NAME

TYPE

WATTAGE

VOLTAGE

CATALOG NUMBER

LIMITED WARRANTY: CATALOGED KIRLIN FIXTURES ARE WARRANTED FREE OF DEFECTS IN WORKMANSHIP OR MATERIAL FOR THREE YEARS FROM DATE OF PURCHASE. INSTALLED TO N.E.C. IN NORMAL USE. Manufacturer at his option will replace or repair such fixture or refund the purchase price on presentation of proof of purchase and defective fixture at the office of manufacturer within three years of original shipment. Liability of manufacturer is limited to the foregoing, and manufacturer shall not be liable for any other damages, direct or indirect, sustained or suffered by purchaser or any person. This warranty is supplied to the buyer in place of all other warranties, expressed or implied. Seller does not warrant as to merchantability or fitness for a particular use, nor will any oral statement constitute a warranty or amend this specific warranty. Abuse of the fixture, improper installation, repair, or modification of the fixture without prior written authorization from the manufacturer will render the warranty void.