

Recessed Lensed T-6 Bi-Pin
 "Pulse Start" Parabolic
 Wall Washers:
 39 to 150 Watts



6" 150W
 7" 150W

HRR-06058
HRR-07059

THIS PRODUCT IS NO LONGER AVAILABLE

Please consult QUOTATIONS for the best alternative.

Features

Lamp

- Designed for metal halide T-6 bi-pin lamps. See chart below for standard and optional wattages.
- See Option -43 and chart below for lower wattage.

Socket

- Pulse rated. Silicone leads.
- G12 bi-pin. Porcelain body.
- Offset.

Reflectors

- Upper: Specular Alzak® aluminum.
- Lower: Specular Alzak, self-flange.
- Optional reflector finishes available.

Lens

- UV absorbing, clear, and etched. Mounted above trim assembly.

- Class H, high reactance for 120 volt and Options -65, -66; linear reactor for 277 volt.
- Capacitor and ignitor supplied.
- Dimming (-39) and electronic (-96) ballasts available. See Options.
- Acrylic enameled aluminum.
- Cool: Dissipates heat across entire surface.
- Spray: Acrylic enamel spray.

- Entire luminaire serviced from below through removable reflectors.
- Built-in plaster frame.
- **Outlet Box**
- Prewired 14 GA (NEC) galvanized steel, UL listed; with removable insulated cover.
- 1/2" and 3/4" knockouts.
- **Installation**
- 27" galvanized hanger bars supplied (2).
- Fully adjustable universal mounting brackets supplied (2).
- Recesses indoors or outdoor in covered locations.
- **UL, C-UL (Canada) Listings**
- Wet, damp or dry locations, covered ceilings.
- Through-branch circuit conductors (6 #12).
- **Three Year Limited Warranty**
- Includes standard fixture, including ballast.
- Per current NEC.

Wattage / Lamp Availability and Cut-Out Dimensions

| Catalog No. | Lamp/Base | Standard Wattage Pulse MH | Option -43: Lower Wattage Pulse MH | Max. Standby Wattage (-49-65-66) | Ceiling Cut-Out Diameter |
|-------------|----------------|------------------------------|---------------------------------------|--|--------------------------------|
| HRR-06058 | T-6/G12 bi-pin | 150 | 39-70 | 100 | 6.5" |
| HRR-07059 | T-6/G12 bi-pin | 150 | 39-70 | 100 | 8.0" |

Options

Ballasts

- 39 Electronic dimming ballast instead, for pulse start metal halide. Consult factory for wattage and voltage availability.
- 96 Regulating electronic MH ballast instead.

Wattage and Voltage

- 43 Lower wattage: See Option -43 chart above for available lower wattages. Specify voltage.
- 120 120 volt, 60 Hz. ballast.
- 277 277 volt, 60 Hz. ballast.
- 347 347 volt, 60 Hz. ballast. Consult factory for dimming or electronic.
- 97 Other voltage ballast instead. Consult factory.

Relays, Standbys, Lamps (see Chart)

- 49 Extra circuit DCB socket. Do not energize simultaneously with main source. Also see -LS.

- 65 Electronic standby system and DCB socket. Following HID outage, provides immediate light until HID restrikes. Also see -66 and -LS.
- 66 Electronic time delay standby system and DCB socket. Following outage, provides light until HID reaches 70% output. Also see Option -LS.
- LP With lamp. Specify wattage and color temperature, and clear or coated. (3000°K standard for T-6 metal halide)
- LS With T-4 DCB tungsten halogen standby lamp. Use only with Options -49, -65 or -66.

Reflectors and Trims (Self-Flanged)

- 16 Champagne Gold specular Alzak lower reflector. (CP x .95)
- 30 All White lower reflector. (CP x .95)
- 31 White flange (only) on lower reflector.
- 32 Trim extender. Broadens trim flange O.D. by 1" to cover larger ceiling opening.
- 45 Gasket above reflector flange. Stops dust streaks on ceiling.
- 63 Dune specular Alzak lower reflector. (CP x .93)

- 69 Wheat specular Alzak lower reflector. (CP x .92)
- 70 SofTex Clear etched lower reflector. (CP x .92)
- 71 SofTex Dune etched lower reflector. (CP x .89)
- 72 Black specular Alzak lower reflector. (CP x .77)
- 77 SofTex Pewter etched lower reflector. (CP x .85)
- 90 SofTex Champagne Gold etched lower reflector. (CP x .90)
- 91 SofTex Wheat etched lower reflector. (CP x .88)
- 92 Umber specular Alzak lower reflector. (CP x .83)
- 93 Pewter specular Alzak lower reflector. (CP x .88)
- 94 Custom color lower reflector. Consult factory.

Mounting Options

- 85 Ceiling Panel; with recessed fixture hole. Lays-in 2' x 2' grid.

Other Options

- 99 Special modification. Consult factory.
- TA Top access modification for servicing from above ceiling.

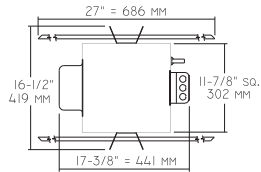


THE KIRLIN COMPANY

3401 EAST JEFFERSON AVENUE • DETROIT, MICHIGAN 48207-4232
 (313) 259-6400 • Fax: (313) 259-9409 or (313) 259-3121 • www.kirlinlighting.com

HRR-06058
HRR-07059

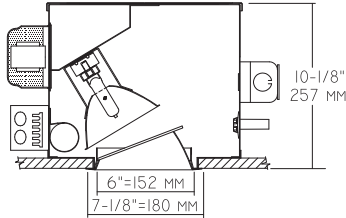
Plan View



C.U. (Coefficients of Utilization) Tables are available on request. Please contact your Kirlin representative.

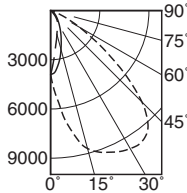
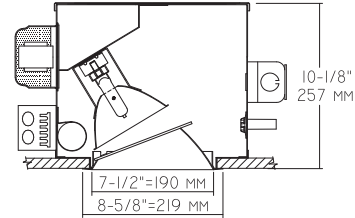
HRR-06058 150W

LAMP and TRIM ASSEMBLY SHOWN 90° OUT OF POSITION



HRR-07059 150W

LAMP and TRIM ASSEMBLY SHOWN 90° OUT OF POSITION



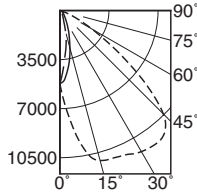
WALL > --- 0°
 --- 90°
 --- 180°

EFFIC: 41.7%

ITL TEST #51481

*LER = 30.0 •AEC = \$8.01

| DISTANCE FROM CEILING IN FEET | SINGLE FIXTURE | | | | MULTIPLE FIXTURES | | | | | | |
|-------------------------------|---|-------|------|------|-------------------|------------|------------|------------|-------|-------|-------|
| | 1' | 2' | 3' | 4' | 3' CENTERS | 4' CENTERS | 4' CENTERS | 4' CENTERS | | | |
| | FIXTURE INSTALLED 3' FROM WALL Footcandle Distribution on Wall Surface | | | | | | | | | | |
| 1 | 46.0 | 25.9 | 12.5 | 5.3 | 3.0 | 45.9 | 42.3 | 45.9 | 47.5 | 39.0 | 47.5 |
| 2 | 141.0 | 76.0 | 24.8 | 10.8 | 5.4 | 132.0 | 115.0 | 132.0 | 102.0 | 82.0 | 102.0 |
| 3 | 216.0 | 141.0 | 62.9 | 20.5 | 8.6 | 208.0 | 182.0 | 208.0 | 159.0 | 129.0 | 159.0 |
| 4 | 227.0 | 164.0 | 87.6 | 31.4 | 11.4 | 226.0 | 204.0 | 226.0 | 161.0 | 134.0 | 161.0 |
| 5 | 165.0 | 128.0 | 73.7 | 31.6 | 12.8 | 195.0 | 183.0 | 195.0 | 152.0 | 132.0 | 152.0 |
| 6 | 113.0 | 95.2 | 60.9 | 28.6 | 12.8 | 148.0 | 145.0 | 148.0 | 119.0 | 109.0 | 119.0 |
| 7 | 80.8 | 67.6 | 47.7 | 25.1 | 12.3 | 118.0 | 117.0 | 118.0 | 94.5 | 90.0 | 94.5 |
| 8 | 59.9 | 51.4 | 36.3 | 21.6 | 11.9 | 96.4 | 95.6 | 96.4 | 75.6 | 73.7 | 75.6 |
| 9 | 46.9 | 42.4 | 31.0 | 18.9 | 11.1 | 81.7 | 80.7 | 81.7 | 65.0 | 63.4 | 65.1 |



WALL > --- 0°
 --- 90°
 --- 180°

EFFIC: 46.7%

ITL TEST #51482

*LER = 33.6 •AEC = \$7.15

| DISTANCE FROM CEILING IN FEET | SINGLE FIXTURE | | | | MULTIPLE FIXTURES | | | | | | |
|-------------------------------|---|-------|------|------|-------------------|------------|------------|------------|-------|-------|-------|
| | 1' | 2' | 3' | 4' | 3' CENTERS | 4' CENTERS | 4' CENTERS | 4' CENTERS | | | |
| | FIXTURE INSTALLED 3' FROM WALL Footcandle Distribution on Wall Surface | | | | | | | | | | |
| 1 | 46.0 | 25.9 | 12.5 | 5.3 | 2.9 | 55.8 | 51.1 | 55.8 | 58.7 | 47.0 | 58.7 |
| 2 | 141.0 | 76.0 | 24.8 | 10.8 | 5.4 | 165.0 | 142.0 | 165.0 | 126.0 | 98.5 | 126.0 |
| 3 | 216.0 | 141.0 | 62.9 | 20.5 | 8.6 | 253.0 | 220.0 | 253.0 | 196.0 | 154.0 | 196.0 |
| 4 | 227.0 | 164.0 | 87.6 | 31.4 | 11.4 | 270.0 | 240.0 | 270.0 | 192.0 | 156.0 | 192.0 |
| 5 | 165.0 | 128.0 | 73.7 | 31.6 | 12.8 | 224.0 | 209.0 | 224.0 | 177.0 | 150.0 | 177.0 |
| 6 | 113.0 | 95.2 | 60.9 | 28.6 | 12.8 | 167.0 | 162.0 | 167.0 | 136.0 | 122.0 | 136.0 |
| 7 | 80.8 | 67.6 | 47.7 | 25.2 | 12.3 | 133.0 | 130.0 | 133.0 | 106.0 | 100.0 | 106.0 |
| 8 | 59.8 | 51.3 | 36.3 | 21.6 | 11.9 | 109.0 | 107.0 | 109.0 | 85.4 | 82.5 | 85.4 |
| 9 | 46.8 | 42.4 | 31.0 | 18.9 | 11.2 | 93.0 | 91.7 | 93.0 | 73.9 | 71.4 | 73.9 |

* LER (Luminaire Efficacy Rating) = Luminaire Effic. x Total Lamp Lumens x Ballast Factor / Input Watts

• AEC = Annual Energy Cost per 1000 lumens (based on 3000 hours use @ \$0.08 KWH).

SUBMITTAL DATA

APPROVAL STAMP

JOB NAME

TYPE

WATTAGE

VOLTAGE

CATALOG NUMBER

LIMITED WARRANTY: CATALOGUED KIRLIN FIXTURES ARE WARRANTED FREE OF DEFECTS IN WORKMANSHIP OR MATERIAL FOR THREE YEARS FROM DATE OF PURCHASE. INSTALLATION TO N.E.C. IN NORMAL USE. Manufacturer at his option will replace or repair such fixture or refund the purchase price on presentation of proof of purchase and defective fixture at the office of manufacturer within three years of original shipment. Liability of manufacturer is limited to the foregoing and manufacturer shall not be liable for any other damages, direct or indirect, sustained or suffered by purchaser or any other person. This warranty does not extend to the fixture or any other component of the fixture which has been altered, modified, repaired, or used for other than the intended use. This warranty is void if the fixture is not installed in accordance with the manufacturer's instructions. This warranty is void if the fixture is not installed in accordance with the manufacturer's instructions.