

Recessed Open Access  
Lensed E-Lamp  
Downlight: 50 to 150 Watt

6" 150W HRR-06025

# THIS PRODUCT IS NO LONGER AVAILABLE

## PLEASE CONSULT QUOTATIONS FOR THE BEST ALTERNATIVE.

### Features

#### Lamp

- Designed for metal halide E-lamps. See chart below for standard and optional wattages.
- See Option -43 and chart below for lower wattage for HPS availability.

#### Socket

- Vertical. Pulse rated. Glazed porcelain.
- Nickel-plated brass screw shell. Standard leads.

#### Reflector

- Self-flanged clear specular Alzak reflector.
- Ten optional reflector finishes available.

#### Lens

- UV absorbing clear tempered glass mounted to reflector. Also see Options.

#### Ballast Assembly

- Whisper quiet pulse start ballast.

- 60-150 watt class 14 high reactance for 120 volt and Options -65, -66; linear reactor for 277 volt.
- Capacitor and ignitor supplied.
- Dimming (-39) and electronic (-96) ballasts available. See Options.
- DCB socket, long life electronic ballast, and easily serviced in ceiling including dry wall.
- Acrylic enameled aluminum.
- Cool: Dissipates heat across entire surface.
- Resistant to moisture.
- Resistant to exterior cleaning spray test.

- Entire luminaire serviced from below through removable reflector and lens.
- Built-in plaster frame.

#### Outlet Box

- Prewired 14 GA (NEC) galvanized steel, UL listed; with removable insulated cover.
- 1/2" and 3/4" knockouts.

#### Installation

- 27" galvanized hanger bars supplied (2).
- Fully adjustable universal mounting brackets supplied (2).
- Recesses indoor or outdoor in covered locations.

#### UL, C-UL (Canada) Listings

- Wet, damp or dry locations, covered ceilings.
- Through-branch circuit conductors (6 #12).

#### Three Year Limited Warranty

- Includes standard fixture, including ballast.
- Per current NEC

### Wattage Availability and Cut-Out Dimensions

Catalog No.	Lamp/Base	Standard Wattage		Option -43: Lower Wattage		Max. Standby Wattage (-49-65-66-LS)	Ceiling Cut-Out Diameter
		PulseMH	-24 (HPS)	PulseMH	-24 (HPS)		
HRR-06025	ED-17/Med	150	150	50-125	35-100	100	6.5"

### Options

#### Sources and Ballasts

- 24 HPS ballast instead. See wattage chart above for available wattages. Specify voltage.
- 39 Electronic dimming ballast instead, for pulse start metal halide. Consult factory for wattage and voltage availability.
- 96 Regulating electronic MH ballast instead. Consult factory for availability in 175W or above.

#### Wattage and Voltage

- 43 Lower wattage: See Option -43 chart above for available lower wattages. Specify voltage.
- 120 120 volt, 60 Hz. ballast.
- 277 277 volt, 60 Hz. ballast.
- 347 347 volt, 60 Hz. ballast. Consult factory for dimming or electronic.
- 97 Other voltage ballast instead. Consult factory.

#### Relays, Standbys, Lamps (See Chart)

- 49 Extra circuit DCB socket. Do not energize simultaneously with main source. Also see -LS.

- 65 Electronic standby system and DCB socket. Following HID outage, provides immediate light until HID restrikes. Also see -66 and -LS.
- 66 Electronic time delay standby system and DCB socket. Following outage, provides light until HID reaches 70% output. Also see Option -LS.
- LP With lamp. Specify source, wattage, color temperature, and clear or coated. (3700°K standard for metal halide) Consult factory for other color temperatures.
- LS With T-4 DCB tungsten halogen standby lamp. Use only with Options -49, -65 or -66.

#### Reflectors and Trims (Self-Flanged)

- 16 Champagne Gold specular Alzak reflector. (CP x .93)
- 31 White flange (only) on self-flanged reflector.
- 32 Trim extender. Broadens trim flange O.D. by 1" to cover larger ceiling opening.
- 45 Gasket above reflector flange. Stops dust streaks on ceiling.
- 63 Dune specular Alzak reflector. (CP x .90)
- 69 Wheat specular Alzak reflector. (CP x .88)

- 70 SofTex Clear softly etched reflector. (CP x .90)
- 71 SofTex Dune softly etched reflector. (CP x .81)
- 77 SofTex Pewter softly etched reflector. (CP x .78)
- 90 SofTex Champagne Gold softly etched reflector. (CP x .84)
- 91 SofTex Wheat softly etched reflector. (CP x .80)
- 93 Pewter specular Alzak reflector. (CP x .85)
- 94 Custom color reflector. Consult factory.

#### Lenses

- 15 Prismatic flat C#73 glass instead.
- ML UV absorbing tempered Microlux glass instead. Concentrates distribution.

#### Mounting Options

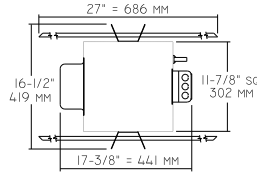
- 79 Extension collar for up to 2" thick ceilings.
- 85 Ceiling Panel; with recessed fixture hole. Lays-in 2' x 2' grid. White.

#### Other Options

- 99 Special modification. Consult factory.

### HRR-06025

Plan View

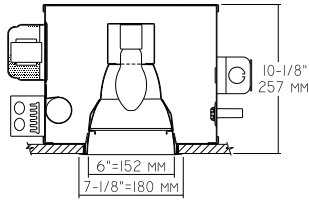


**Cone of Light Key**

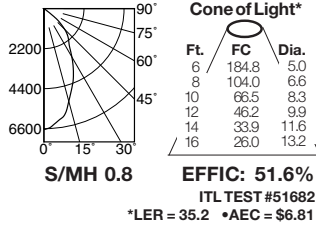
- Ft.** Distance from fixture
- FC** Footcandles (average)
- Dia.** Circle of light at 50% of FC
- Dia. (in ft.) shown is where FC value is half the FC at nadir.

**C.U. (Coefficients of Utilization) Tables are available on request. Please contact your Kirlin representative.**

### HRR-06025 150W

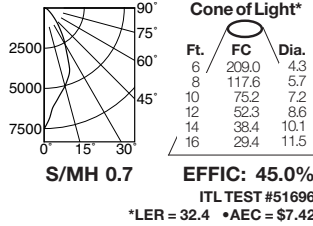


**HRR-06025 (Coated Lamp)**



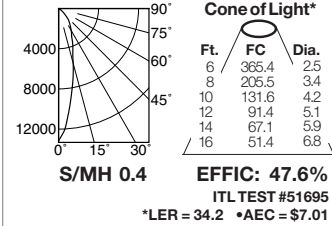
	CANDLEPOWER DISTRIBUTION				
	0.0	22.5	45.0	67.5	90.0
0	6653	6653	6653	6653	6653
5	6384	6384	6384	6384	6384
15	5275	5275	5275	5275	5275
25	3832	3832	3832	3832	3832
35	2418	2418	2418	2418	2418
45	1613	1613	1613	1613	1613
55	86	86	86	86	86
65	25	25	25	25	25
75	13	13	13	13	13
85	0	0	0	0	0
90	0	0	0	0	0

**HRR-06025-15 (Clear Lamp)**



	CANDLEPOWER DISTRIBUTION				
	0.0	22.5	45.0	67.5	90.0
0	7524	7524	7524	7524	7524
5	6210	6210	6210	6210	6210
15	5027	5027	5027	5027	5027
25	3533	3533	3533	3533	3533
35	1909	1909	1909	1909	1909
45	914	914	914	914	914
55	446	446	446	446	446
65	257	257	257	257	257
75	73	73	73	73	73
85	0	0	0	0	0
90	0	0	0	0	0

**HRR-06025-ML (Clear Lamp)**



	CANDLEPOWER DISTRIBUTION				
	0.0	22.5	45.0	67.5	90.0
0	13155	13155	13155	13155	13155
5	10735	10735	10735	10735	10735
15	5636	5636	5636	5636	5636
25	3106	3106	3106	3106	3106
35	2011	2011	2011	2011	2011
45	1069	1069	1069	1069	1069
55	385	385	385	385	385
65	148	148	148	148	148
75	45	45	45	45	45
85	0	0	0	0	0
90	0	0	0	0	0

LIMITED WARRANTY: CATALOGED KIRLIN FIXTURES ARE WARRANTED FREE OF DEFECTS IN WORKMANSHIP OR MATERIAL FOR THREE YEARS FROM DATE OF PURCHASE. INSTALLED TO N.E.C. IN NORMAL USE. Manufacturer at his option will replace or repair fixture free of charge if the purchaser proves a representation of not purchase and delivery of fixture at the office of manufacturer within three years of the date of purchase. Label on any other fixtures, or parts of any other fixtures, of manufacturer is not to be construed as a warranty or amend this specific warranty. Abnormal use, abuse of the fixture, improper installation, or repair, or modification of the fixture without prior written authorization from the manufacturer will render the warranty void.

\* LER (Luminaire Efficacy Rating) = Luminaire Effic. x Total Lamp Lumens x Ballast Factor / Input Watts

• AEC = Annual Energy Cost per 1000 lumens (based on 3000 hours use @ \$0.08 KWH).

### SUBMITTAL DATA

### APPROVAL STAMP

JOB NAME

TYPE

WATTAGE

VOLTAGE

CATALOG NUMBER