

Recessed Round PAR Lamp
Lensed Wall Washer
39 to 150 Watt

6" 150W HRR-06010

THIS PRODUCT IS NO LONGER AVAILABLE

Features

Lamp

- Designed for metal halide PAR lamps. See chart below for standard and optional lamp wattages.
- See Option -43 and chart below for lower wattage.

Socket Assembly - Wall Washers

- Fixed tilt optimizes wall wash pattern.
- Socket
- Medium base. Pulse rated. Glazed porcelain.
- Nickel-plated brass screw shell. Silicone leads.

Reflector

- Self-flanged clear specular Alzak® beam spreader.
- Thirteen optional reflector finishes available.

Lens

- UV absorbing, stress and scratch resistant glass mounted aluminum assembly.

Ballast Assembly - Metal Halide

- Whisperack™ Metal Halide ballast. 180° rated.
- PPF ultra-start™ ballast.
- Power factor .95; Full range dimming; 100% efficient, linear reactor for 277 volt.
- Capacitor and ignitor supplied.
- Dimming (-39) and electronic (-96) ballasts available. See Options.
- Cool, quiet, long-life. Silicone leads.
- Designed for easy removal and replacement.

Fuse

- Fuses primary rewirable. Not for 180 volt.
- Busing
- Across entire luminaire.
- Cool. Dissipates heat across entire surface area. Ventilated.
- Standard Exco®. 100% efficient.
- Surgeless

- Entire luminaire serviced through removable reflector. For top access see Option -TA.
- Built-in plaster frame.

Outlet Box

- Prewired 14 GA. (NEC) galvanized steel, UL listed; with removable insulated cover.
- 1/2" and 3/4" knockouts.

Installation

- 27" galvanized hanger bars supplied (2).
- Fully adjustable universal mounting brackets supplied (2).
- Recesses indoors or outdoor in covered locations.

UL, C-UL (Canada) Listings

- Wet, damp or dry locations, covered ceilings.
- Through-branch circuit conductors (6 #12).

Three Year Limited Warranty

- Complete standard fixture, including ballast.
- Thru-mount protection
- Thru-mount NEC

Please consult QUOTATIONS for the best alternative.

Wattage / Lamp Availability and Cut-Out Dimensions

Catalog No.	Designed For:				Option -43: Lower Wattage	Ceiling Cut-Out Diameter	Fixture Style
	Standard Lamp	Optional Lamp(s)					
HRR-06010	150 PAR 38	20° SP	35° MFL	65° FL	70-100	6.5"	Lensed Wall Wash

Options

Sources and Ballasts

- 39 Electronic dimming ballast instead, for pulse start metal halide. Consult factory for wattage and voltage availability.
- 96 Regulating electronic MH ballast instead.

Wattage and Voltage

- 43 Lower wattage. See Option -43 chart above for available lower wattages. Specify voltage.
- 120 120 volt, 60 Hz. ballast.
- 277 277 volt, 60 Hz. ballast.
- 347 347 volt, 60 Hz. ballast. Consult factory for dimming or electronic.
- 97 Other voltage ballast instead. Consult factory.

Lamps (See Chart)

- LP With lamp. Choose standard lamp shown above or specify wattage, beam spread, style (PAR 20, PAR 30, PAR 38), brand and color temperature.

Reflectors and Trims (Self-Flanged)

- 16 Champagne Gold specular Alzak reflector. (CP x .98)
- 30 All White reflector. (CP x .98)
- 31 White flange (only) on self-flanged reflector.
- 32 Trim extender. Broadens trim flange O.D. by 1" to cover larger ceiling opening.
- 45 Gasket above reflector flange. Stops dust streaks on ceiling.
- 63 Dune specular Alzak reflector. (CP x .97)
- 69 Wheat specular Alzak reflector. (CP x .97)
- 70 SoftTex Clear softly etched reflector. Resists smudges. (CP x .98)
- 71 SoftTex Dune softly etched reflector. Resists smudges. (CP x .95)
- 72 Black specular Alzak reflector. (CP x .87)
- 77 SoftTex Pewter softly etched reflector. Resists smudges. (CP x .90)
- 90 SoftTex Champagne Gold softly etched reflector. Resists smudges. (CP x .96)

- 91 SoftTex Wheat softly etched reflector. Resists smudges. (CP x .95)
- 92 Umber specular Alzak reflector. (CP x .92)
- 93 Pewter specular Alzak reflector. (CP x .95)
- 94 Custom color reflector. Consult factory.

Mounting Options

- 82 Sloped ceiling adapter, with mounting hardware. Specify 5° increments up to 30°.
- 85 Ceiling Panel; with recessed fixture hole. Lays-in 2' x 2' grid. White.

Other Options

- 99 Special modification. Consult factory.
- TA Top access modification for servicing from above ceiling.

KIRLIN

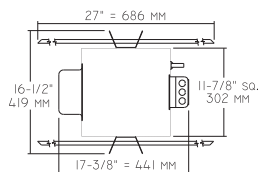
THE KIRLIN COMPANY

3401 EAST JEFFERSON AVENUE • DETROIT, MICHIGAN 48207-4232
(313) 259-6400 • Fax: (313) 259-9409 or (313) 259-3121 • www.kirlinlighting.com

THE KIRLIN COMPANY RESERVES THE RIGHT TO CHANGE, WITHOUT NOTICE, DETAILS OR SPECIFICATIONS IN PRODUCT DESIGN.

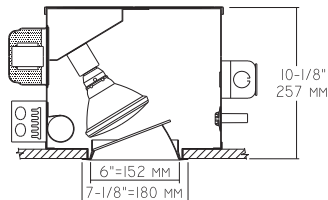
Alzak® is a registered trademark of ALCOA.

Plan View

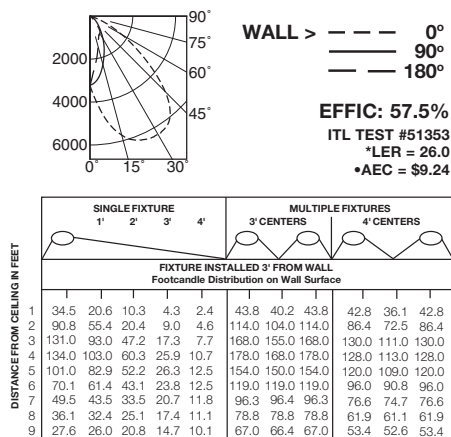


C.U. (Coefficients of Utilization) Tables are available on request. Please contact your Kirlin representative.

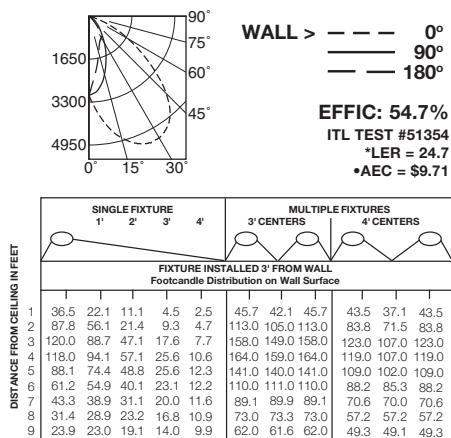
**LAMP and TRIM
ASSEMBLY
SHOWN 90° OUT
OF POSITION**



20° SPOT



35° MEDIUM FLOOD



* **LER (Luminaire Efficacy Rating)** = $\frac{\text{Luminaire Effic.} \times \text{Total Lamp Lumens} \times \text{Ballast Factor}}{\text{Input Watts}}$

- **AEC = Annual Energy Cost per 1000 lumens (based on 3000 hours use @ \$0.08 KWH).**

SUBMITTAL DATA

APPROVAL STAMP

JOB NAME

TYPE

WATTAGE

VOLTAGE

CATALOG NUMBER

LIMITED WARRANTY: CATALOGUE KIRLUXTURES ARE GUARANTEED FREE OF DEFECTS IN WORKMANSHIP OR MATERIAL FOR THREE YEARS FROM DATE OF PURCHASE. INSTALLED TO N.C., IN NORMAL USE. Manufacturer use at its option will repair, replace, substitute or refund the purchase price of, or replace or repair, defective material or workmanship, expressed or implied. Liability of manufacturer is limited to the foregoing, and manufacturer shall not be liable for any other damages, direct or indirect, sustained or suffered, or consequential, or otherwise, arising out of or from the use of the fixture, improper installation, or purchase or use of the fixture without prior written authorization for a particular use, nor will any oral statement constitute a warranty or amend this specific warranty. Abnormal use, abuse of the fixture, improper installation, or modification of the fixture without prior written authorization for a particular use, will void the warranty.

PS MET HALIDE
JULY 2002