

Recessed Lensed T-6 Bi-Pin
Ellipsoidal or Parabolic
Downlights: 39 to 150 Watt

Multiple Beam Spread Available

THIS PRODUCT IS NO LONGER AVAILABLE

PLEASE CONSULT QUOTATIONS FOR THE BEST ALTERNATIVE.

Features

Lamp

- Designed for vertical T-6 bi-pin metal halide lamps. See chart below for standard and optional wattages.
- See Option -43 and chart below for lower wattage.

Socket

- Vertical. G12 bi-pin. Pulse rated.
- Porcelain body. Silicone leads.

Reflectors

- Upper: Ellipsoidal or parabolic specular Alzak® aluminum.
- Lower: Low brightness parabolic specular Alzak aluminum, self-flanged.
- Fourteen optional reflector finishes available.

Lens

- UV absorbing film on lens. Micro-lights are mounted to upper reflector. Also see Options.

- Best Assembly: Specific for each lamp type. High quality, long life, 80°C rated.
- Class H, high reactance for 120 volt and Options -65, -66; linear reactor for 277 volt.
- Capacitor and ignitor supplied.
- Dimming (-39) and electronic (-96) ballasts available. See Options.
- Yokes, long arm, 30° and 45°.
- Acrylic enamelled aluminum.
- Cool: Dissipates heat across entire surface area.
- Yokes: 30° and 45°.
- Spray test.

- Entire luminaire serviced from below through removable reflectors.
- Built-in plaster frame.
- **Outlet Box**
- Prewired 14 GA (NEC) galvanized steel, UL listed; with removable insulated cover.
- 1/2" and 3/4" knockouts.
- **Installation**
- 27" galvanized hanger bars supplied (2).
- Fully adjustable universal mounting brackets supplied (2).
- Recesses indoor or outdoor in covered locations.
- **UL C-UL (Canada) Listings**
- Wet, damp or dry locations, covered ceilings.
- Through-branch circuit conductors (6 #12).
- **Three Year Limited Warranty**
- Includes standard fixture, including ballast.
- **UL Protection**
- Per current NEC

Wattage Availability and Cut-Out Dimensions

Catalog No.	Lamp/Base	Standard Wattage Pulse MH	Option -43: Lower Wattage Pulse MH	Max. Standby Wattage (-49-65-66)	Ceiling Cut-Out Diameter	Optical Style
HRR-04050	T-6/G12 bi-pin	150	39-70	—	5.0"	Ellipsoidal
HRR-06051	T-6/G12 bi-pin	150	39-70	100	6.5"	Ellipsoidal
HRR-06052	T-6/G12 bi-pin	150	39-70	100	6.5"	Parabolic

Options

Ballasts

- 39 Electronic dimming ballast instead, for pulse start metal halide. Consult factory for wattage and voltage availability.
- 96 Regulating electronic MH ballast instead.

Wattage and Voltage

- 43 Lower wattage: See Option -43 chart above for available lower wattages. Specify voltage.
- 120 120 volt, 60 Hz. ballast.
- 277 277 volt, 60 Hz. ballast.
- 347 347 volt, 60 Hz. ballast. Consult factory for dimming or electronic.
- 97 Other voltage ballast instead. Consult factory.

Relays, Standbys, Lamps (See Chart) (-49, -65, -66 NA for HRR-04050)

- 49 Extra circuit DCB socket. Do not energize simultaneously with main source. Also see -LS.
- 65 Electronic standby system and DCB socket. Following HID outage, provides immediate light until HID restrikes. Also see -66 and -LS.
- 66 Electronic time delay standby system and DCB

- socket. Following outage, provides light until HID reaches 70% output. Also see Option -LS.
- LP With lamp. Specify wattage and color temperature. (3000°K standard for T-6 MH)
- LS With T-4 DCB tungsten halogen standby lamp. Use only with Options -49, -65 or -66.

Reflectors and Trims (Self-Flanged)

- 16 Champagne Gold specular Alzak lower cone. (CP x .95)
- 30 All White lower cone or cross baffle.
- 31 White flange (only) on lower cone or cross baffle. (CP x .95)
- 32 Trim extender. Broadens trim flange O.D. by 1" to cover larger ceiling opening.
- 45 Gasket above reflector flange. Stops dust streaks on ceiling.
- 63 Dune specular Alzak lower cone. (CP x .93)
- 69 Wheat specular Alzak lower cone. (CP x .92)
- 70 SofTex Clear etched lower cone. (CP x .92)
- 71 SofTex Dune etched lower cone. (CP x .89)
- 72 Black specular Alzak lower cone. (CP x .77)
- 77 SofTex Pewter etched lower cone. (CP x .85)
- 90 SofTex Champagne Gold etched lower cone. (CP x .90)

- 91 SofTex Wheat etched lower cone. (CP x .88)
- 92 Umber specular Alzak lower cone. (CP x .83)
- 93 Pewter specular Alzak lower cone. (CP x .88)
- 94 Custom color reflector or cross baffle. Consult factory.
- OG OptiGroove black tapered aluminum lower cone. White trim. (CP x .75)

Lenses

- 15 Prismatic C#73 flat glass lens instead.
- 28 UV absorbing clear tempered glass instead.

Mounting Options

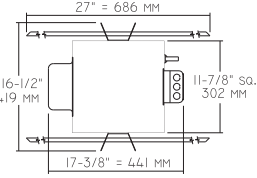
- 79 Extension collar for up to 2" thick ceilings.
- 82 Sloped ceiling adapter, with mounting hardware. Specify 5° increments up to 30°. Not available for HRR-04050.
- 85 Ceiling Panel; with recessed fixture hole. Lays-in 2' x 2' grid. White.

Other Options

- 99 Special modification. Consult factory.
- SP Shallow plenum (7-5/8" depth) for HRR-06051. Horizontal lamp.
- TA Top access; for servicing from above ceiling.

HRR-04050
HRR-06051
HRR-06052

Plan View

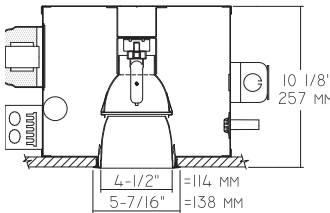


Cone of Light Key

- Ft.** Distance from fixture
 - FC** Footcandles (average)
 - Dia.** Circle of light at 50% of FC
- * Dia. (in ft.) shown is where FC value is half the FC at nadir.

C.U. (Coefficients of Utilization) Tables are available on request. Please contact your Kirlin representative.

HRR-04050 150W



HRR-04050

Cone of Light*

Ft.	FC	Dia.
6	122.6	7.6
8	69.0	10.1
10	44.1	12.6
12	30.7	15.2
14	22.5	17.7
13	17.2	20.2

S/MH 1.1
EFFIC: 46.5%
ITL TEST #52127
***LER = 33.4**
***AEC = \$7.18**

CANDLEPOWER DISTRIBUTION					
	0.0	22.5	45.0	67.5	90.0
0	4414	4414	4414	4414	4414
5	4186	4186	4186	4186	4186
15	4524	4524	4524	4524	4524
25	4606	4606	4606	4606	4606
35	3106	3106	3106	3106	3106
45	925	925	925	925	925
55	40	40	40	40	40
65	5	5	5	5	5
75	2	2	2	2	2
85	0	0	0	0	0
90	0	0	0	0	0

HRR-04050-15

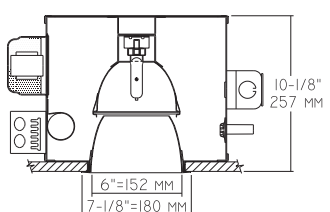
Cone of Light*

Ft.	FC	Dia.
6	111.8	6.9
8	62.9	9.2
10	40.3	11.5
12	28.0	13.8
14	20.5	16.2
13	15.7	18.5

S/MH 1.1
EFFIC: 40.1%
ITL TEST #51480
***LER = 28.8**
***AEC = \$8.33**

CANDLEPOWER DISTRIBUTION					
	0.0	22.5	45.0	67.5	90.0
0	4025	4025	4025	4025	4025
5	4155	4155	4155	4155	4155
15	4779	4779	4779	4779	4779
25	3894	3894	3894	3894	3894
35	2353	2353	2353	2353	2353
45	710	710	710	710	710
55	33	33	33	33	33
65	3	3	3	3	3
75	2	2	2	2	2
85	0	0	0	0	0
90	0	0	0	0	0

HRR-06051 150W



HRR-06051

Cone of Light*

Ft.	FC	Dia.
6	224.6	5.3
8	126.3	7.1
10	80.8	8.8
12	56.1	10.6
14	41.2	12.4
13	31.6	14.1

S/MH 0.9
EFFIC: 56.2%
ITL TEST #51361
***LER = 40.4**
***AEC = \$5.94**

CANDLEPOWER DISTRIBUTION					
	0.0	22.5	45.0	67.5	90.0
0	8084	8084	8084	8084	8084
5	7470	7470	7470	7470	7470
15	6635	6635	6635	6635	6635
25	4984	4984	4984	4984	4984
35	2962	2962	2962	2962	2962
45	1343	1343	1343	1343	1343
55	42	42	42	42	42
65	11	11	11	11	11
75	0	0	0	0	0
85	0	0	0	0	0
90	0	0	0	0	0

HRR-06051-15

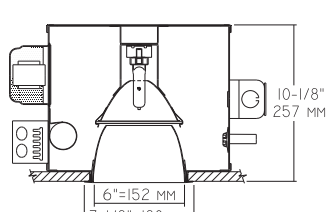
Cone of Light*

Ft.	FC	Dia.
6	210.6	5.2
8	118.5	6.9
10	75.8	8.6
12	52.7	10.3
14	38.7	12.0
13	29.6	13.8

S/MH 0.9
EFFIC: 51.9%
ITL TEST #51360
***LER = 37.3**
***AEC = \$6.43**

CANDLEPOWER DISTRIBUTION					
	0.0	22.5	45.0	67.5	90.0
0	7582	7582	7582	7582	7582
5	7357	7357	7357	7357	7357
15	6337	6337	6337	6337	6337
25	4531	4531	4531	4531	4531
35	2832	2832	2832	2832	2832
45	1086	1086	1086	1086	1086
55	40	40	40	40	40
65	13	13	13	13	13
75	1	1	1	1	1
85	0	0	0	0	0
90	0	0	0	0	0

HRR-06052 150W



HRR-06052

Cone of Light*

Ft.	FC	Dia.
10	409.7	3.3
15	182.1	5.0
20	102.4	6.6
25	65.5	8.3
30	45.5	10.0
35	33.4	11.6

S/MH 0.3
EFFIC: 52.6%
ITL TEST #51364
***LER = 37.8**
***AEC = \$6.35**

CANDLEPOWER DISTRIBUTION					
	0.0	22.5	45.0	67.5	90.0
0	40974	40974	40974	40974	40974
5	32456	32456	32456	32456	32456
15	11006	11006	11006	11006	11006
25	2484	2484	2484	2484	2484
35	443	443	443	443	443
45	106	106	106	106	106
55	15	15	15	15	15
65	0	0	0	0	0
75	0	0	0	0	0
85	0	0	0	0	0
90	0	0	0	0	0

HRR-06052-15

Cone of Light*

Ft.	FC	Dia.
10	136.0	6.8
15	60.4	10.1
20	34.0	13.5
25	21.8	16.9
30	15.1	20.3
35	11.0	23.6

S/MH 0.7
EFFIC: 49.7%
ITL TEST #51363
***LER = 35.7**
***AEC = \$6.72**

CANDLEPOWER DISTRIBUTION					
	0.0	22.5	45.0	67.5	90.0
0	13597	13597	13597	13597	13597
5	13198	13198	13198	13198	13198
15	9919	9919	9919	9919	9919
25	4367	4367	4367	4367	4367
35	1182	1182	1182	1182	1182
45	239	239	239	239	239
55	19	19	19	19	19
65	5	5	5	5	5
75	2	2	2	2	2
85	0	0	0	0	0
90	0	0	0	0	0

HRR-06052-28

Cone of Light*

Ft.	FC	Dia.
10	1126.5	1.7
15	500.6	2.5
20	281.6	3.3
25	180.2	4.2
30	125.1	5.0
35	91.9	5.8

S/MH 0.2
EFFIC: 51.7%
ITL TEST #51362
***LER = 37.2**
***AEC = \$6.46**
MULTIPLY CANDELA BY 10.0

CANDLEPOWER DISTRIBUTION					
	0.0	22.5	45.0	67.5	90.0
0	11265	11265	11265	11265	11265
5	5404	5404	5404	5404	5404
15	806	806	806	806	806
25	146	146	146	146	146
35	8	8	8	8	8
45	0	0	0	0	0
55	0	0	0	0	0
65	0	0	0	0	0
75	0	0	0	0	0
85	0	0	0	0	0
90	0	0	0	0	0

* LER (Luminaire Efficacy Rating) = Luminaire Effic. x Total Lamp Lumens x Ballast Factor / Input Watts

* AEC = Annual Energy Cost per 1000 lumens (based on 3000 hours use @ \$0.08 KWH).

SUBMITTAL DATA

APPROVAL STAMP

JOB NAME _____
 TYPE _____
 WATTAGE _____ VOLTAGE _____
 CATALOG NUMBER _____

LIMITED WARRANTY: CATALOGUED KIRLIN FIXTURES ARE WARRANTIED FREE OF DEFECTS IN WORKMANSHIP OR MATERIAL FOR THREE YEARS FROM DATE OF PURCHASE. INSTALLATION TO N.E.C. IN NORMAL USE. Manufacturer at his option will replace or repair such fixture or refund the purchase price on presentation of proof of purchase and defective fixture at the office of manufacturer within three years of original shipment. Liability of manufacturer is limited to the foregoing, and manufacturer shall not be liable for any other damages, direct or indirect, sustained or suffered by purchaser or any other party. This warranty is void where prohibited by law. Kirlin Lighting, Inc. reserves the right to modify or discontinue this warranty without notice. This warranty is void where prohibited by law. Kirlin Lighting, Inc. reserves the right to modify or discontinue this warranty without notice.