

Recessed Open PAR Standard
"Pulse Start" Downlights.
39 to 70 Watt

**THIS PRODUCT
IS NO LONGER
AVAILABLE**

4" 39W
4" 70W
6" 70W

**HRR-04001
HRR-04002
HRR-06003**

Features

Lamp

- Designed for metal halide PAR lamps. See chart below for standard and optional lamps and wattages.
- See Option -43 and chart below for lower wattage.

Socket

- Vertical. Medium base. Pulse rated.
- Glazed porcelain.
- Nickel-plated brass screw shell. Silicone leads.

Reflector

- Self-flanged clear specular Alzak reflector.
- Fourteen optional reflector finishes available.

Ballast Assembly: Specify Voltage

- WhisperPack full modulated pulse rated HPF pulse start ballast.

- Premium Class H; High reactance for 120 VAC.
- 27" diameter, 27" height.
- 1/2" and 3/4" knockouts.
- 1/2" and 3/4" knockouts.

- Cool, quiet, long-life. Silicone leads.
- Visible and easily serviced in all ceilings including dry wall.

Fuse

- 1/2" diameter, 27" height.
- Acrylic enameled aluminum.
- Entire luminaire serviced through removable top access.
- 100% humidity test.
- 100% salt spray test.

Outlet Box

- Prewired 14 GA (NEC) galvanized steel, UL listed; with removable insulated cover.
- 1/2" and 3/4" knockouts.

Installation

- 27" galvanneal hanger bars supplied (2).
- Fully adjustable universal mounting brackets supplied (2).
- Recesses indoor or outdoor in covered locations.

UL, C-UL (Canada) Listings

- Wet, damp or dry locations, covered ceilings.
- Through-branch circuit conductors (6 #12).

Three Year Limited Warranty

Complete standard fixture, including ballast.

Protection

- Refer to N.C.

Please consult

QUOTATIONS

for the best alternative.

Wattage / Lamp Availability and Cut-out Dimensions

| Catalog No. | Designed For: | | | Option -43: Lower Wattage | Max. Standby Wattage (-49-65-66-LS) | Ceiling Cut-Out Diameter |
|-------------|---------------|---------|------------------|------------------------------|---|-----------------------------|
| | Standard | Lamp | Optional Lamp(s) | | | |
| HRR-04001 | 39 PAR 20 | 30° MFL | 10° SP — | — | — | 5.0" |
| HRR-04002 | 70 PAR 30 | 40° MFL | 10° SP — | 39 | — | 5.0" |
| HRR-06003 | 70 PAR 30 | 40° MFL | 10° SP — | 39 | 100 | 6.5" |

Options

Sources and Ballasts

- 39 Electronic dimming ballast instead, for pulse start metal halide. Consult factory for wattage and voltage availability.
- 96 Regulating electronic MH ballast instead.

Wattage and Voltage

- 43 Lower wattage. See Option -43 chart above for available lower wattages. Specify voltage.
- 120 120 volt, 60 Hz. ballast.
- 277 277 volt, 60 Hz. ballast.
- 347 347 volt, 60 Hz. ballast. Consult factory for dimming or electronic.
- 97 Other voltage ballast instead. Consult factory.

Relays, Lamps (See Chart)

- 49 Extra circuit DCB socket with clear tempered glass shield for HRR-06003 only. Do not energize simultaneously with main source. Also see -LS.
- 65 Electronic standby system and DCB socket with clear tempered glass shield for HRR-06003 only. Following HID outage, provides light until HID strikes. Also see -66 and -LS.

- 66 Electronic time delay standby system and DCB socket with clear tempered glass shield for HRR-06003 only. Following outage, provides light until HID reaches 70% output. Also see Option -LS.
- LP With lamp. Choose standard lamp shown above or specify wattage, beam spread, style (PAR 20, PAR 30), brand and color temperature.
- LS With T-4 DCB tungsten halogen standby lamp. Use only with Options -49, -65 or -66.

Reflectors and Trims (Self-Flanged)

- 16 Champagne Gold specular Alzak reflector. (CP x .98)
- 30 All White reflector (CP x .98) or cross baffle.
- 31 White flange (only) on self-flanged reflector or cross baffle.
- 32 Trim extender. Broadens trim flange O.D. by 1" to cover larger ceiling opening.
- 45 Gasket above reflector flange. Stops dust streaks on ceiling.
- 63 Dune specular Alzak reflector. (CP x .97)
- 69 Wheat specular Alzak reflector. (CP x .97)
- 70 SofTex Clear softly etched reflector. (CP x .98)
- 71 SofTex Dune softly etched reflector. (CP x .95)
- 72 Black specular Alzak reflector. (CP x .87)

- 77 SofTex Pewter softly etched reflector. (CP x .90)
- 90 SofTex Champagne Gold softly etched reflector. (CP x .96)
- 91 SofTex Wheat softly etched reflector. (CP x .95)
- 92 Umber specular Alzak reflector. (CP x .92)
- 93 Pewter specular Alzak reflector. (CP x .95)
- 94 Custom color reflector or cross baffle. Consult factory.
- OG OptiGroove; black seamless tapered aluminum reflector. White trim. (CP x .90)

Mounting Options

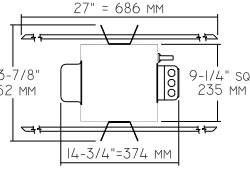
- 79 Extension collar for up to 2" thick ceilings.
- 82 Sloped ceiling adapter, with mounting hardware. Specify 5° increments up to 30°. Not available for HRR-04001, HRR-04002.
- 85 Ceiling Panel; with recessed fixture hole. Lays-in 2' x 2' grid. White.

Other Options

- 99 Special modification. Consult factory.
- TA Top access; for servicing from above ceiling.

HRR-04001
HRR-04002
HRR-06003

Plan View



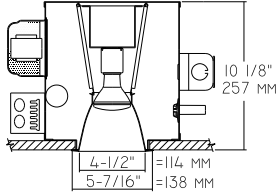
Cone of Light Key

- Ft.** Distance from fixture
 - FC** Footcandles (average)
 - Dia.** Circle of light at 50% of FC
- * Dia. (in ft.) shown is where FC value is half the FC at radii.

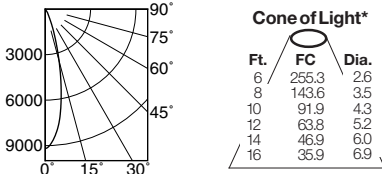
C.U. (Coefficients of Utilization) Tables are available on request. Please contact your Kirlin representative.

LIMITED WARRANTY: CATALOGUED KIRLIN FIXTURES ARE WARRANTIED FREE OF DEFECTS IN WORKMANSHIP OR MATERIAL FOR THREE YEARS FROM DATE OF PURCHASE. INSTALLLED TO N.E.C. - IN NORMAL USE. Manufacturer at the option will replace or repair such fixture or refund the purchase price on presentation of proof of purchase and defective fixture at the official manufacturer within three years of original shipment. Liability of manufacturer is limited to the foregoing, and manufacturer shall not be liable for any other damages, direct or indirect, sustained or suffered by purchaser of any product. This warranty is supplied under the understanding that the manufacturer, as expressed or implied, shall does not warrant as to merchantability or fitness for a particular use, nor will any oral statement constitute a warranty or amend this specific warranty. Abnormal use, abuse of the fixture, improper installation, or operation of the fixture shall void the warranty. Kirlin Lighting Inc. reserves the right to modify the fixture without prior written notice or obligation on the manufacturer's part. Kirlin Lighting Inc.

HRR-04001 39W



30° MEDIUM FLOOD

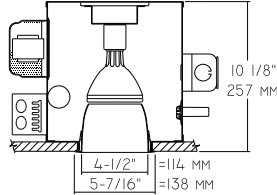


S/MH 0.4

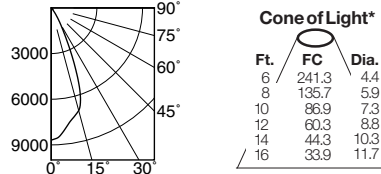
| CANDLEPOWER DISTRIBUTION | | | | | |
|--------------------------|------|------|------|------|------|
| | 0.0 | 22.5 | 45.0 | 67.5 | 90.0 |
| 0 | 9189 | 9189 | 9189 | 9189 | 9189 |
| 5 | 8212 | 8212 | 8212 | 8212 | 8212 |
| 15 | 3534 | 3534 | 3534 | 3534 | 3534 |
| 25 | 127 | 127 | 127 | 127 | 127 |
| 35 | 127 | 127 | 127 | 127 | 127 |
| 45 | 23 | 23 | 23 | 23 | 23 |
| 55 | 0 | 0 | 0 | 0 | 0 |
| 65 | 0 | 0 | 0 | 0 | 0 |
| 75 | 0 | 0 | 0 | 0 | 0 |
| 85 | 0 | 0 | 0 | 0 | 0 |
| 90 | 0 | 0 | 0 | 0 | 0 |

EFFIC: 90.7%
ITL TEST #49885
***LER = 36.9**
***AEC = \$6.50**

HRR-04002 70W



40° MEDIUM FLOOD

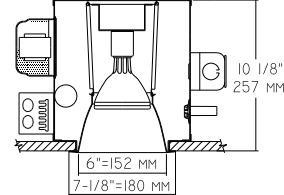


S/MH 0.6

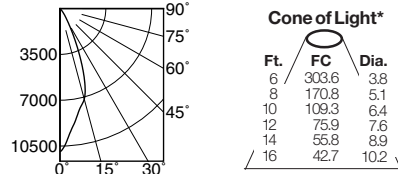
| CANDLEPOWER DISTRIBUTION | | | | | |
|--------------------------|------|------|------|------|------|
| | 0.0 | 22.5 | 45.0 | 67.5 | 90.0 |
| 0 | 8687 | 8687 | 8687 | 8687 | 8687 |
| 5 | 8202 | 8202 | 8202 | 8202 | 8202 |
| 15 | 6303 | 6303 | 6303 | 6303 | 6303 |
| 25 | 2659 | 2659 | 2659 | 2659 | 2659 |
| 35 | 514 | 514 | 514 | 514 | 514 |
| 45 | 101 | 101 | 101 | 101 | 101 |
| 55 | 1 | 1 | 1 | 1 | 1 |
| 65 | 0 | 0 | 0 | 0 | 0 |
| 75 | 0 | 0 | 0 | 0 | 0 |
| 85 | 0 | 0 | 0 | 0 | 0 |
| 90 | 0 | 0 | 0 | 0 | 0 |

EFFIC: 90.5%
ITL TEST #49881
***LER = 46.3**
***AEC = \$5.18**

HRR-06003 70W



40° MEDIUM FLOOD

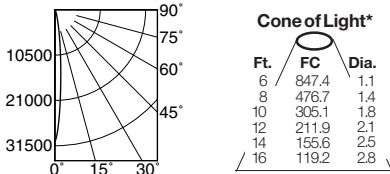


S/MH 0.6

| CANDLEPOWER DISTRIBUTION | | | | | |
|--------------------------|-------|-------|-------|-------|-------|
| | 0.0 | 22.5 | 45.0 | 67.5 | 90.0 |
| 0 | 10329 | 10329 | 10329 | 10329 | 10329 |
| 5 | 9407 | 9407 | 9407 | 9407 | 9407 |
| 15 | 7162 | 7162 | 7162 | 7162 | 7162 |
| 25 | 2857 | 2857 | 2857 | 2857 | 2857 |
| 35 | 632 | 632 | 632 | 632 | 632 |
| 45 | 58 | 58 | 58 | 58 | 58 |
| 55 | 11 | 11 | 11 | 11 | 11 |
| 65 | 0 | 0 | 0 | 0 | 0 |
| 75 | 0 | 0 | 0 | 0 | 0 |
| 85 | 0 | 0 | 0 | 0 | 0 |
| 90 | 0 | 0 | 0 | 0 | 0 |

EFFIC: 95.5%
ITL TEST #49879
***LER = 48.9**
***AEC = \$4.91**

10° NARROW SPOT

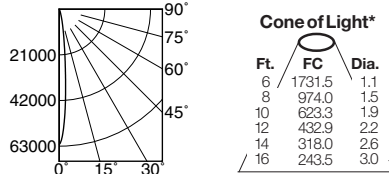


S/MH 0.2

| CANDLEPOWER DISTRIBUTION | | | | | |
|--------------------------|-------|-------|-------|-------|-------|
| | 0.0 | 22.5 | 45.0 | 67.5 | 90.0 |
| 0 | 30507 | 30507 | 30507 | 30507 | 30507 |
| 5 | 15654 | 15654 | 15654 | 15654 | 15654 |
| 15 | 2206 | 2206 | 2206 | 2206 | 2206 |
| 25 | 476 | 476 | 476 | 476 | 476 |
| 35 | 136 | 136 | 136 | 136 | 136 |
| 45 | 34 | 34 | 34 | 34 | 34 |
| 55 | 0 | 0 | 0 | 0 | 0 |
| 65 | 0 | 0 | 0 | 0 | 0 |
| 75 | 0 | 0 | 0 | 0 | 0 |
| 85 | 0 | 0 | 0 | 0 | 0 |
| 90 | 0 | 0 | 0 | 0 | 0 |

EFFIC: 91.4%
ITL TEST #49884
***LER = 37.2**
***AEC = \$6.45**

10° NARROW SPOT

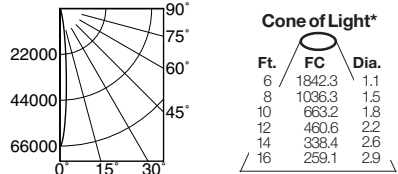


S/MH 0.2

| CANDLEPOWER DISTRIBUTION | | | | | |
|--------------------------|-------|-------|-------|-------|-------|
| | 0.0 | 22.5 | 45.0 | 67.5 | 90.0 |
| 0 | 62335 | 62335 | 62335 | 62335 | 62335 |
| 5 | 33879 | 33879 | 33879 | 33879 | 33879 |
| 15 | 4308 | 4308 | 4308 | 4308 | 4308 |
| 25 | 697 | 697 | 697 | 697 | 697 |
| 35 | 124 | 124 | 124 | 124 | 124 |
| 45 | 143 | 143 | 143 | 143 | 143 |
| 55 | 22 | 22 | 22 | 22 | 22 |
| 65 | 0 | 0 | 0 | 0 | 0 |
| 75 | 0 | 0 | 0 | 0 | 0 |
| 85 | 0 | 0 | 0 | 0 | 0 |
| 90 | 0 | 0 | 0 | 0 | 0 |

EFFIC: 89.1%
ITL TEST #49880
***LER = 45.6**
***AEC = \$5.26**

10° NARROW SPOT



S/MH 0.2

| CANDLEPOWER DISTRIBUTION | | | | | |
|--------------------------|-------|-------|-------|-------|-------|
| | 0.0 | 22.5 | 45.0 | 67.5 | 90.0 |
| 0 | 66321 | 66321 | 66321 | 66321 | 66321 |
| 5 | 35181 | 35181 | 35181 | 35181 | 35181 |
| 15 | 4227 | 4227 | 4227 | 4227 | 4227 |
| 25 | 918 | 918 | 918 | 918 | 918 |
| 35 | 176 | 176 | 176 | 176 | 176 |
| 45 | 135 | 135 | 135 | 135 | 135 |
| 55 | 0 | 0 | 0 | 0 | 0 |
| 65 | 0 | 0 | 0 | 0 | 0 |
| 75 | 0 | 0 | 0 | 0 | 0 |
| 85 | 0 | 0 | 0 | 0 | 0 |
| 90 | 0 | 0 | 0 | 0 | 0 |

EFFIC: 94.2%
ITL TEST #49878
***LER = 48.2**
***AEC = \$4.98**

* LER (Luminaire Efficacy Rating) = Luminaire Effic. x Total Lamp Lumens x Ballast Factor / Input Watts

* AEC = Annual Energy Cost per 1000 lumens (based on 3000 hours use @ \$0.08 KWH).

SUBMITTAL DATA

APPROVAL STAMP

JOB NAME _____

TYPE _____

WATTAGE _____ VOLTAGE _____

CATALOG NUMBER _____