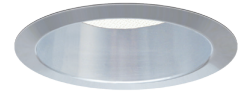


CATALOG #	TYPE
JOB NAME	VOLTAGE

GRR-06405-2500L

## Open Appearance 6" Downlight • LED

Up to 60,000 Hour Life • Wet Location  
LM-80 Qualified • LM-79 Certified Photometry



### Specifications

#### Delivered System Performance\*

- Lumen Series: **MUST SPECIFY**
- -2500L: 2500 nominal lumens (35W).
- Distribution: MFL standard.
- Optional: -SPT or -WFL.
- Color temperature: 3500°K standard.
- Optional: -27K, -30K or -41K.
- CRI: 80+ standard.
- 60,000 hour life (L70).
- Fully sustainable: removable for servicing.

#### Thermal Protection: SPECIFY VOLTAGE

- Thermal protector for insulation detection per UL/NEC. Must specify input voltage.

#### Thermal Management System

- All aluminum proprietary heat sink, components and housing maximize cool operation and long life while minimizing maintenance.

#### LED Power Supply - INTERNAL

- Suitable for outdoor / indoor use: -30°C (-22°F) to 60°C (140°F).
- 120-277V / 50-60Hz standard. Power insensitive.

#### 0-10V CCR dimming standard. (100-10%) Trim

- Low brightness clear aluminum self-flanged downlight cone with tempered glass lens above.

#### Acrylic Enameled Aluminum Housing

- Rustproof and corrosion resistant: Exceeds 1000 hour ASTM 5% salt spray test.
- Shallow depth fits restricted plenums.
- Color operation: includes self-aligning trim.
- Full cutaway. Entire luminaire including LED light engine is accessible without being serviced through aperture.
- Built-in plaster flange.
- **Cut Box**
- UL listed for use with insulation. Removable color. Pre-wired for 14 GA EMT with 1/2" and 3/4" knockouts.

#### Installation

- Press into or cut into hole.
- A common ceiling is up to 1/8" thick.
- 2" galvanized hinged tabs with adjustable trim brackets.



QuickShip Program Luminaire

**THIS PRODUCT IS NOW AVAILABLE AS**

#### UL C-UL (Canada) Listings

- Wet, damp or dry locations, covered ceilings.
- Through-branch conductors (4 #12 AWG 90°C).

#### IEC & FCC Compliance

- Meets IEC/EN 60601-1-2 electromagnetic compatibility standard for medical electrical equipment.
- FCC Part 15 certified for EMI/RFI emissions.

#### FIVE YEAR

#### Limited Warranty

- Complete standard fixture.

MUST SPECIFY		OPTIONAL	
Product Number	Voltage	Options	Example
GRR-06405-2500L	120-277V (277 volt)	SPT, WFL, MFL, WFL, MFL	GRR-06405-2500L-120-30K-SPT

### Options

#### Input Power: SPECIFY

- 120 120V (50-60Hz) input for thermal protector.
- 277 277V (50-60Hz) input for thermal protector.

#### LED Power Supply

- EI Remote emergency inverter for 100% of rated lumens. Run time: 90+ minutes. 120 or 277V, 60Hz input only. Specify voltage.

#### Color Temperature (CCT)

- 27K Color temperature 2700°K instead.
- 30K Color temperature 3000°K instead.
- 41K Color temperature 4100°K instead.

**Some design features and options might have changed**



QuickShip Program Luminaire

- Orders received by 10 AM (ET) ship by 5 PM within 72 hours
- Fixtures ship complete. Freight allowed: Over \$7000
- 50 luminaires (max.) per type on each purchase order (or consult RSM)

<p><b>The Kirlin Company</b> 3401 EAST JEFFERSON AVENUE • DETROIT, MICHIGAN 48207-4232 (313) 259-6400 • Fax: (313) 259-3121 • www.kirlinlighting.com</p>	<p><b>Gazelle Express LED LIGHTING</b></p>

DUE TO OUR CONTINUING EFFORT TO IMPROVE PRODUCTS, TECHNICAL INFORMATION IS SUBJECT TO CHANGE WITHOUT NOTICE. THE KIRLIN COMPANY EXPECTS PHOTOMETRIC PERFORMANCE TO IMPROVE SIGNIFICANTLY AND FREQUENTLY AS LED SOURCE TECHNOLOGY IMPROVES.



