

CATALOG #	TYPE	
JOB NAME	WATTAGE	VOLTAGE

10" 2 Triple 57 WATT MAXIMUM

FRR-10019

2 Lamp Dual Reflector
with Excellent Visual Comfort

THIS PRODUCT IS NO LONGER AVAILABLE

Features

Lamp

- Designed for two 4-pin triple/four tube maximum compact fluorescent lamps:
- 57W triple/four tube.

Ballast: Multi Voltage

- Installed electronic high power factor, thermally protected. For lower wattages: Option -43.
- 120-277 multi-volt; 50/60 Hz. THD < 10%.
- ClickQuick connectors for easy service.
- Single circuit wiring or see Option -51.
- Cold weather -22°F (-30°C).
- End of lamp life protection circuit. RFI filter.
- Internally fused. Also see Options -FS, -FD.

Reflector

- Upper: Spectular Alzak® aluminum.
- Lower: Low-iridescence (L.I.) Alzak® aluminum, one piece, self-flanged.
- See Options for accessories.

Aluminum Housing

- Acrylic enameled. Rustproof: Exceeds 1000 hour ASTM 5% salt spray test.
- Light weight: minimizes ceiling load.
- Cool operating: extends lamp life.
- Eliminates heat caused through aperture.
- Built-in plaster frame.

Outlet Box

- Prewired 14 GA (NEC) galvanized steel, UL listed. 1/2" and 3/4" knockouts.

Installation

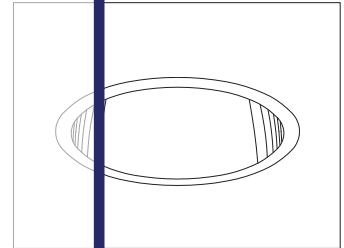
- 27" galvanized hanger bars with adjustable leveling brackets (2) included.
- Recesses indoor or outdoor in covered locations.

UL, UL-Listed Listing

- Visit www.kirlin.com for listing information.
- Through branch conductors (0-112).

Three Year Limited Warranty

- Complete standard unit and fixture.



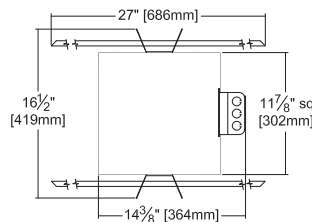
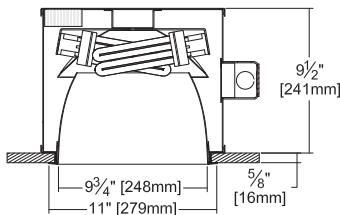
Selected Optional Trims:

- All White Option -30
- Softex Titanium Option -57
- Softex Dune Option -71
- Softex Pewter Option -77
- Softex Wheat Option -91

Please consult
QUOTATIONS
for the best alternative.

Performance at a Glance

FRR-10019

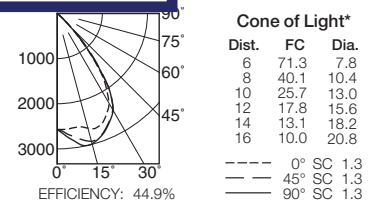


Ceiling Cut-out
10 1/4" Dia.

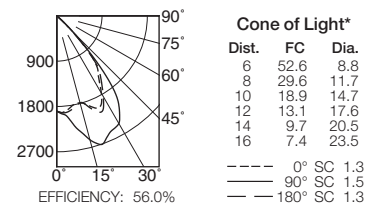
Cone of Light Key

- Ft. Distance from fixture
- FC Footcandles at nadir (0°)
- Dia. Circle of light at 50% of FC
- * Dia. (in ft.) shown is where FC value is half the FC at nadir.

FRR-10019 (2 Triple 57W)



FRR-10019-43 (2 Triple 42W)



THE KIRLIN COMPANY

3401 EAST JEFFERSON AVENUE • DETROIT, MICHIGAN 48207-4232
(313) 259-6400 • Fax: (313) 259-9409 OR (313) 259-3121 • www.kirlinlighting.com

RENAISSANCE SERIES
COMPACT FLUORESCENT LIGHTING

MAXIMUM WATTAGE

2 Triple 57

CATALOG NUMBER

FRR-10019

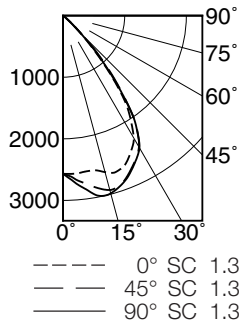
DUE TO OUR CONTINUING EFFORT TO IMPROVE PRODUCTS,
TECHNICAL INFORMATION IS SUBJECT TO CHANGE WITHOUT NOTICE.

Alzak® is a registered trademark of ALCOA.

Detailed Photometry - Installed Fixture

Photometry from I.T.L., Boulder, CO

FRR-10019 (2 Triple 57)



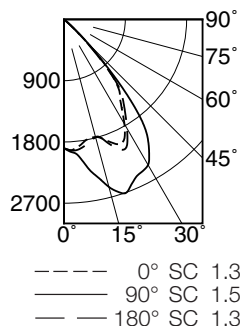
EFFICIENCY : 44.9%

CANDLEPOWER DISTRIBUTION					
	0.0	22.5	45.0	67.5	90.0
0	2568	2568	2568	2568	2568
5	2572	2607	2685	2732	2754
15	2630	2771	2931	2968	2988
25	2530	2638	2683	2704	2698
35	1820	1917	1964	2018	1959
45	408	463	438	449	388
55	11	13	11	13	14
65	4	4	4	6	4
75	1	1	1	1	1
85	0	0	0	0	0
90	0	0	0	0	0

COEFFICIENTS OF UTILIZATION									
RF	20								
	RC	80				50			
		70	50	30	10	50	30	10	
1	51	49	48	47	47	46	45		
2	48	46	44	42	43	42	41		
3	45	42	40	38	40	39	37		
4	43	39	37	34	38	36	34		
5	40	36	34	31	35	33	31		
6	38	34	31	29	33	30	28		
7	36	31	29	26	31	28	26		
8	34	29	26	24	29	26	24		
9	32	27	25	23	27	24	22		
10	30	26	23	21	25	23	21		

ITL TEST #54939 *LER=27.4 •AEC=\$8.45

FRR-10019-43 (2 Triple 42)



EFFICIENCY : 56.0%

CANDLEPOWER DISTRIBUTION					
	0.0	45.0	90.0	135.0	180.0
0	1893	1893	1893	1893	1893
5	1902	1904	1977	2011	1931
15	1789	2195	2548	2482	1791
25	2001	2457	2536	2636	2105
35	1437	1941	2148	1997	1534
45	451	487	506	481	417
55	16	16	16	16	14
65	7	7	7	7	5
75	4	4	4	4	2
85	0	0	0	0	0
90	0	0	0	0	0

COEFFICIENTS OF UTILIZATION									
RF	20								
	RC	80				50			
		70	50	30	10	50	30	10	
1	63	62	60	59	57	57	56		
2	60	57	54	52	54	52	50		
3	56	52	49	47	50	48	46		
4	53	48	45	42	46	44	41		
5	50	45	41	38	43	40	38		
6	47	41	37	35	40	37	34		
7	44	38	34	32	37	34	31		
8	41	35	32	29	34	31	29		
9	39	33	29	27	32	29	27		
10	37	31	27	25	30	27	25		

ITL TEST #55298 *LER=40.0 •AEC=\$6.00

Options

Ballast, Wattage and Voltage

- 39 Installed electronic dimming ballast. Indoor use. 10°C (50°F) minimum start. Specify wattage, voltage and brand. Not available with Option -75, -CR or -HR.
- 43 Lower wattage: for 4-pin 2x42/32/26W triple, 2x26W quad (multi-wattage/voltage). Specify wattage.
- 84 Wired for two circuits. Also see -FD.
- 97 Specify other voltage. Consult factory.
- 98 347 volt, 50/60 Hz. input. Consult factory.

Emergency Ballast - Specify Voltage¹

Remote (field mounted) ballast, test switch and indicator light. Suitable for damp locations from 0° to 50°C (32° to 122°F) or with Cold Weather version (see -CR) -20° to 55°C (-4° to 131°F).

- 75 Remote 1-lamp EM ballast. Specify voltage.
- CR Remote cold weather (-20° to 55°C) 1-lamp EM ballast. Specify voltage.
- HR¹ Remote higher lumen (up to 1250) 1-lamp EM ballast. 13-42W only. Specify voltage.

Trims

- 30 All white lower cone. (CP x .95)
- 31 White acrylic enameled lower cone flange.
- 32 White oversize trim ring. Specify O.D.
- 45 Gasket between ceiling and cone flange.
- 57 SofTex Titanium lower cone. (CP x .80)
- 70 SofTex Clear lower cone. (CP x .92)
- 71 SofTex Dune lower cone. (CP x .88)
- 77 SofTex Pewter lower cone. (CP x .85)
- 79 Extension collar for ceilings up to 2" thick.
- 82 Sloped ceiling adapter. Specify slope in 5° increments up to 30°.

- 90 SofTex Champagne Gold lower cone. (CPx.91)
- 91 SofTex Wheat lower cone. (CP x .87)
- 94 Custom color/finish. Specify. Consult factory.

Top Access

- TA Top access for servicing from above.

Other

- 99 Special modification. Consult factory.
- FD Two additional in-line fuses. One per ballast. Use with Option -84. Not available with Option -98 (347V).
- FS Additional in-line fuse. Not available with Option -98 (347V).
- LE With 4-pin electronic lamp. 3500°K standard. 82 CRI and 12,000 hour life. Specify wattage, style and color temperature.

¹ Visit www.kirlinlighting.com for most current performance / specifications.

SUBMITTAL DATA

JOB NAME

TYPE

WATTAGE

VOLTAGE

CATALOG NUMBER

APPROVAL STAMP

* LER = Luminaire Efficiency Rating
LER = Luminaire Effic. x Total Lamp Lumens x Ballast Factor
Input Watts

* AEC = Annual Energy Cost per 1000 lumens
(based on 3000 hours use @ \$0.08 kWh).

LIMITED WARRANTY: CATALOGED KIRLIN FIXTURES ARE WARRANTED FREE OF DEFECTS IN WORKMANSHIP OR MATERIAL FOR THREE YEARS FROM DATE OF PURCHASE. INSTALLLED TO N.E.C. IN NORMAL USE. Manufacturer at the option will repair or replace such fixture or refund the purchase price on presentation of a proof of purchase and defective fixture at the offices of manufacturer within three years of original shipment. Liability of manufacturer shall not be liable for any other damages, direct or indirect, sustained or suffered by purchaser or any person. This warranty is supplied to the buyer in place of all other warranties, expressed or implied. Seller does not warrant as to merchantability or fitness for a particular use, nor will any oral statement constitute a warranty or amend this specific warranty. Abnormal use, abuse of the fixture, improper installation, or repair, or modification of the fixture without prior written authorization from the manufacturer will render the warranty void.