

CATALOG #	TYPE	
JOB NAME	WATTAGE	VOLTAGE

9" 1 Triple 70 WATT MAXIMUM

FRR-09008

Outstanding Efficiency with 70 Watt
or 57 Watt (Optional)

THIS PRODUCT IS NO LONGER AVAILABLE

Features

Lamp

- Designed for one 4-pin triple/four tube amalgam compact fluorescent lamp: 70W triple tube or 57W (Optional)
- Ballast: Multi-voltage
- Installed electronic high power factor ballast protected. For lower wattages: Option -43.
- 120-277 multi-volt; 50/60 Hz. THD < 10%.
- ClickQuick connectors for easy service.
- Cold weather -22°F (-30°C).
- End of lamp life protection circuit. RFI filter.
- Internally fused. Also see Option -FS.

Reflector

- Low iridescence (L.I.) Alzak® aluminum, one piece, self-finished.
- See Options for other finishes.

Aluminum Housing

- Acrylic enamel. Rustproof: Exceeds 1000 hour ASTM 5% salt spray test.

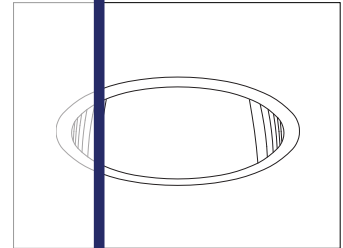
- Lightweight: Minimizes ceiling load.
- Optimal operation: Extends lamp life.
- Efficient luminaire: Servo through a fixture.
- Ballast: Plastic.
- Carrier Box
- Prewired 14 GA (NEC) galvanized steel, UL listed. 1/2" and 3/4" knockouts.

Installation

- 27" galvanized hanger bars with adjustable mounting brackets (2) supplied.
- Mounts indoors or outdoors in any location.

UL, C-UL (Canada) Listings

- UL Type of listing: Type of listing: Type of listing.
- UL Type of listing: Type of listing: Type of listing.
- UL Type of listing: Type of listing: Type of listing.
- Complete standard fixture and ballast.



Recessed Round
Open
Single Reflector

Selected Optional Trims:

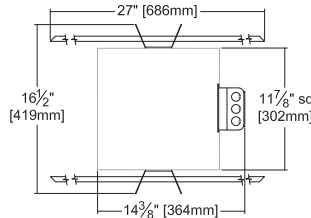
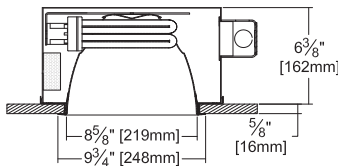
- Glow Ring Option -33
- SoftTex Dune Option -71
- SoftTex Gold Option -90
- SoftTex Wheat Option -91

Please consult
QUOTATIONS

for the best alternative.

Performance at a Glance

FRR-09008

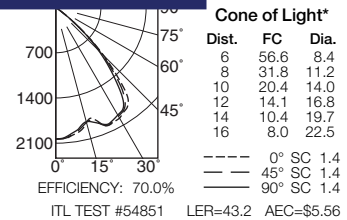


Ceiling Cut-out
9" Dia.

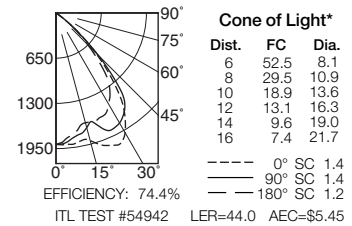
Cone of Light Key

- Ft. Distance from fixture
- FC Footcandles at nadir (0°)
- Dia. Circle of light at 50% of FC
- * Dia. (in ft.) shown is where FC value is half the FC at nadir.

FRR-09008 (1 Triple 70W)



FRR-09008-43 (1 Triple 57W)



THE KIRLIN COMPANY

3401 EAST JEFFERSON AVENUE • DETROIT, MICHIGAN 48207-4232
(313) 259-6400 • Fax: (313) 259-9409 OR (313) 259-3121 • www.kirlinlighting.com

RENAISSANCE SERIES
COMPACT FLUORESCENT LIGHTING

MAXIMUM WATTAGE

1 Triple 70

CATALOG NUMBER

FRR-09008

DUE TO OUR CONTINUING EFFORT TO IMPROVE PRODUCTS,
TECHNICAL INFORMATION IS SUBJECT TO CHANGE WITHOUT NOTICE.

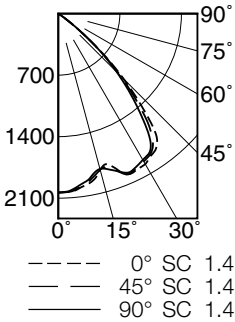
Alzak® is a registered trademark of ALCOA.

Detailed Photometry - Installed Fixture

Photometry from I.T.L., Boulder, CO

LIMITED WARRANTY: CATALOGED KIRLIN FIXTURES ARE WARRANTED FREE OF DEFECTS IN WORKMANSHIP OR MATERIAL FOR THREE YEARS FROM DATE OF PURCHASE. INSTALLLED TON, E.C., INNOCENTIAL USE. Manufacturer at the option will replace or repair such fixture or refund the purchase price on presentation of proof of purchase and defective fixture to the office of manufacturer within ninety days of original shipment. Liability of manufacturer is limited to the fixture and its accessories. This warranty is supplied to the buyer in place of all other warranties, expressed or implied. Seller does not warrant as to merchantability or fitness for a particular use, nor will any oral statement constitute a warranty or amend this specific warranty. Abnormal use, abuse of the fixture, improper installation, or repair, or modification of the fixture without prior written authorization from the manufacturer will render the warranty void.

FRR-09008 (1 Triple 70)



EFFICIENCY : 70.0%

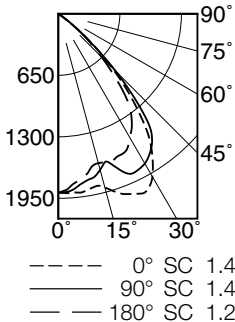
CANDLEPOWER DISTRIBUTION					
	0.0	22.5	45.0	67.5	90.0
0	2036	2036	2036	2036	2036
5	2026	2022	2020	2002	2002
15	1840	1854	1838	1823	1830
25	1998	1969	1991	1935	1975
35	1911	1884	1869	1810	1834
45	1051	1049	995	958	939
55	64	67	77	86	91
65	2	2	2	2	2
75	0	0	0	0	0
85	0	0	0	0	0
90	0	0	0	0	0

COEFFICIENTS OF UTILIZATION							
RF	20						
	80			50			
	70	50	30	10	50	30	10
1	79	77	75	73	72	71	69
2	74	70	67	64	66	64	62
3	69	64	60	57	61	58	55
4	65	59	54	50	56	52	49
5	61	54	49	45	52	48	45
6	57	49	44	41	47	43	40
7	53	45	40	37	44	40	36
8	50	42	37	33	40	36	33
9	47	39	34	30	38	33	30
10	44	36	31	28	35	31	28

ITL TEST #54851 *LER=43.2 •AEC=\$5.56

* LER = Luminaire Efficiency Rating
 LER = Luminaire Effic. x Total Lamp Lumens x Ballast Factor
 Input Watts

FRR-09008-43 (1 Triple 57)



EFFICIENCY : 74.4%

CANDLEPOWER DISTRIBUTION					
	0.0	45.0	90.0	135.0	180.0
0	1890	1890	1890	1890	1890
5	1895	1903	1861	1829	1805
15	1899	1832	1707	1599	1634
25	2095	1904	1860	1590	1626
35	1707	1796	1716	1485	1349
45	786	875	857	705	646
55	57	47	45	67	73
65	2	3	2	4	2
75	0	0	0	0	0
85	0	0	0	0	0
90	0	0	0	0	0

COEFFICIENTS OF UTILIZATION							
RF	20						
	80			50			
	70	50	30	10	50	30	10
1	84	82	79	78	77	75	74
2	79	75	71	68	71	68	66
3	74	68	64	61	65	62	59
4	69	63	58	54	60	56	53
5	65	58	52	49	55	51	48
6	61	53	48	44	51	47	43
7	57	49	44	40	47	43	41
8	53	45	40	36	44	39	36
9	50	42	37	33	41	36	33
10	47	39	34	30	38	33	30

ITL TEST #54942 *LER=44.0 •AEC=\$5.45

* AEC = Annual Energy Cost per 1000 lumens
 (based on 3000 hours use @ \$0.08 KWH).

Options

Ballast, Wattage and Voltage

- 39 Installed electronic dimming ballast. Indoor use. 10°C (50°F) minimum start. Specify wattage, voltage and brand. Not available with Option -75, -CR or -HR.
- 43 Lower wattage: for 4-pin 57W triple/four tube or 42/32/26W triple or 26W quad (multi-wattage/voltage). Specify wattage.
- 97 Specify other voltage. Consult factory.
- 98 347 volt, 50/60 Hz. input. Consult factory.

Emergency Ballast - Specify Voltage¹

Internal (factory installed) or remote (field mounted) ballast, test switch and indicator light. Suitable for damp locations from 0° to 50°C (32° to 122°F)

- or with Cold Weather version (see -CE or -CR)
- 20° to 55°C (-4° to 131°F).
- 75 Remote 1-lamp EM ballast. Specify voltage.
- CR Remote cold weather (-20° to 55°C) 1-lamp EM ballast. Specify voltage.
- HR¹ Remote higher lumen (up to 1250) 1-lamp EM ballast. 13-42W only. Specify voltage.

Trims

- 31 White acrylic enameled reflector flange.
- 32 White oversize trim ring. Specify O.D.
- 33 Decorative Glow Ring suspended beneath trim assembly.
- 45 Gasket between ceiling and reflector flange.
- 70 SofTex Clear reflector. (CP x .89)
- 71 SofTex Dune reflector. (CP x .85)
- 79 Extension collar for ceilings up to 2" thick.

- 82 Sloped ceiling adapter. Specify slope in 5° increments up to 30°.
- 90 SofTex Champagne Gold reflector. (CP x .88)
- 91 SofTex Wheat reflector. (CP x .83)
- 94 Custom color/finish. Specify. Consult factory.

ShatterGuard™ Shield (Beneath Lamp)

- 15 Prismatic C#73 tempered glass lens.
- SG .125" clear polycarbonate.

Other

- 99 Special modification. Consult factory.
- FS Additional in-line fuse. Not available with Option -98 (347V).
- LE With 4-pin electronic lamp. 3500°K standard. 82 CRI and 12,000 hour life. Specify wattage, style and color temperature.

¹ Visit www.kirlinlighting.com for most current performance / specifications.

SUBMITTAL DATA

JOB NAME

TYPE

WATTAGE

VOLTAGE

CATALOG NUMBER

APPROVAL STAMP