

CATALOG #	TYPE	
JOB NAME	WATTAGE	VOLTAGE

7" 1 Triple 57 WATT MAXIMUM

FRR-07030

Adjustable Downlight for Sloped Ceilings

THIS PRODUCT IS NO LONGER AVAILABLE

Features

Lamp

- Designed for one 4-pin triple/four tube amalgam compact fluorescent lamp:
- 57W triple/four tube.

Ballast: Multi-Voltage

- Installed electronic high power factor, thermally protected. For lower wattages: Option -43.
- 120-277 multi-voltage; 50/60 Hz. THD < 10%.
- ClickQuick connectors for easy service.
- Cold weather -22°F (-30°C).
- End of lamp life protection circuit. RFI filter.
- Internally fused. Also see Option -FS.

Reflectors

- Upper: Specular Alzak® aluminum. Tilts up to 30° for sloped ceilings.
- Lower: Low iridescence (L.I.) Alzak aluminum. One piece, self-flanged.
- See Options for other finishes.

Aluminum Housing

- Acrylic lens and electrical enclosure. Exceeds 100-hour AIAA salt spray test.
- Lightweight: Minimizes ceiling load.
- Corrosion: Extends component life.
- Entire luminaires served through aperture.
- Quilting plaster and neoprene gaskets.

Outer Box

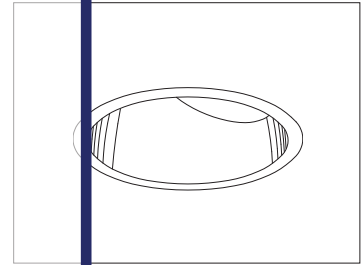
- Prewired 14 GA (NEC) galvanized steel, UL listed. 1/2" and 3/4" knockouts.

Installation

- 27" galvanized hanger bars with adjustable mounting brackets (2) supplied.
- Access under ceiling for wiring and locations.

UL, CUL (Canada) Listings

- UL Listed for use in dry locations and damp locations.
- The UL listing includes a three year limited warranty.
- Complete standard fixture and ballast.



Recessed Round
Open
Adjustable
Sloped Ceilings

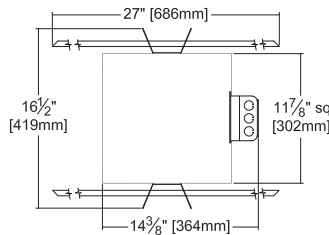
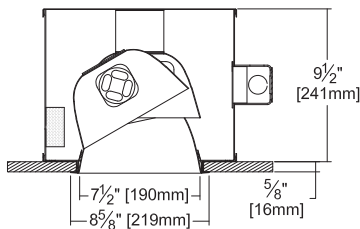
Selected Optional Trims:

- Alzak White Option -30
- SoTex Titanium Option -57
- SoTex Dune Option -71
- SoTex Pewter Option -77
- SoTex Wheat Option -91

Please consult **QUOTATIONS** for the best alternative.

Performance at a Glance

FRR-07030

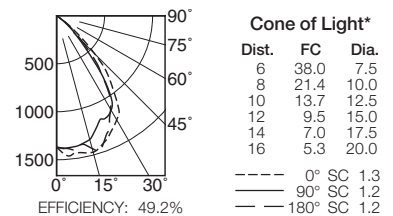


Ceiling Cut-out
8" Dia.

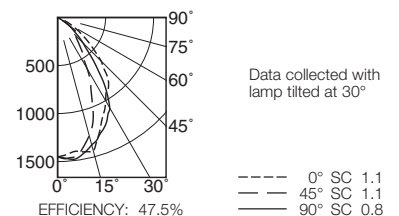
Cone of Light Key

- Ft. Distance from fixture
- FC Footcandles at nadir (0°)
- Dia. Circle of light at 50% of FC
- * Dia. (in ft.) shown is where FC value is half the FC at nadir.

FRR-07030 (1 Triple 57W)



FRR-07030 (1 Triple 57W - 30° TILT)



THE KIRLIN COMPANY

3401 EAST JEFFERSON AVENUE • DETROIT, MICHIGAN 48207-4232
(313) 259-6400 • Fax: (313) 259-9409 OR (313) 259-3121 • www.kirlinlighting.com

RENAISSANCE SERIES
COMPACT FLUORESCENT LIGHTING

MAXIMUM WATTAGE

1 Triple 57

CATALOG NUMBER

FRR-07030

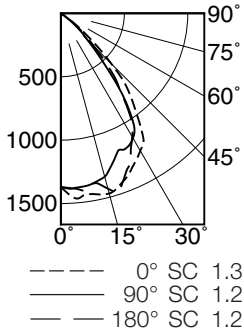
DUE TO OUR CONTINUING EFFORT TO IMPROVE PRODUCTS, TECHNICAL INFORMATION IS SUBJECT TO CHANGE WITHOUT NOTICE.

Alzak® is a registered trademark of ALCOA.

Detailed Photometry - Installed Fixture

Photometry from I.T.L., Boulder, CO

FRR-07030 (1 Triple 57)



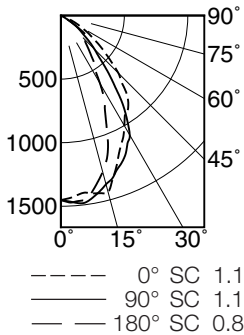
EFFICIENCY : 49.2%

CANDLEPOWER DISTRIBUTION					
	0.0	45.0	90.0	135.0	180.0
0	1369	1369	1369	1369	1369
5	1467	1419	1380	1391	1389
15	1471	1413	1334	1386	1431
25	1336	1319	1184	1242	1298
35	1098	1042	946	904	920
45	562	465	296	349	371
55	45	34	30	23	27
65	8	8	8	8	6
75	3	3	3	3	3
85	2	2	2	2	0
90	0	0	0	0	0

COEFFICIENTS OF UTILIZATION							
RF	20						
RC	80			50			
RW	70	50	30	10	50	30	10
1	55	54	53	51	51	50	49
2	52	50	47	45	47	45	44
3	49	46	43	41	44	41	410
4	46	42	39	36	40	38	36
5	43	39	35	33	37	35	33
6	41	36	32	30	35	32	30
7	38	33	30	27	32	29	27
8	36	31	27	25	30	27	25
9	34	29	25	23	28	25	23
10	32	27	24	21	26	23	21

ITL TEST #55113 *LER=30.7 •AEC=\$7.83

FRR-07030 (1 Triple 57 - 30° Tilt)



EFFICIENCY : 47.5%

CANDLEPOWER DISTRIBUTION					
	0.0	45.0	90.0	135.0	180.0
0	1451	1451	1451	1451	1451
5	1420	1435	1480	1477	1466
15	1438	1306	1374	1344	1273
25	1122	1133	1205	931	821
35	917	879	849	530	460
45	641	587	375	266	277
55	305	299	145	177	163
65	97	53	11	14	14
75	3	3	3	5	5
85	2	2	2	0	0
90	0	0	0	0	0

COEFFICIENTS OF UTILIZATION							
RF	20						
RC	80			50			
RW	70	50	30	10	50	30	10
1	53	52	50	49	49	48	47
2	50	47	45	43	45	43	42
3	47	43	40	38	41	39	37
4	44	39	36	34	38	35	33
5	41	36	33	30	35	32	30
6	38	33	30	27	32	29	27
7	36	31	27	25	30	27	25
8	34	29	25	23	28	25	23
9	32	27	23	21	26	23	21
10	30	25	22	19	24	21	19

ITL TEST #55114 *LER=29.5 •AEC=\$8.13

* LER = Luminaire Efficiency Rating
LER = Luminaire Effic. x Total Lamp Lumens x Ballast Factor
Input Watts

• AEC = Annual Energy Cost per
1000 lumens (based on 3000
hours use @ \$0.08 KWH).

Options

Ballast, Wattage and Voltage

- 39 Installed electronic dimming ballast. Not Type IC listed. Indoor use. 10°C (50°F) minimum start. Specify wattage, voltage and brand. Not available with Option -75, -CR or -HR.
- 43 Lower wattage: for 4-pin 42/32/26W triple or 26W quad (multi-wattage/voltage). Specify wattage.
- 97 Specify other voltage. Consult factory.
- 98 347 volt, 50/60 Hz. input. Consult factory.

Emergency Ballast - Specify Voltage¹

Remote (field mounted) ballast, test switch and indicator light. Suitable for damp locations from 0° to 50°C (32° to 122°F) or with Cold Weather version (see -CR) -20° to 55°C (-4° to 131°F).

- 75 Remote 1-lamp EM ballast. Specify voltage.
- CR Remote cold weather (-20° to 55°C) 1-lamp EM ballast. Specify voltage.
- HR' Remote higher lumen (up to 1250) 1-lamp EM ballast. 13-42W only. Specify voltage.

Trims

- 30 All white lower cone. (CP x .95)
- 31 White flange (only) on lower cone.
- 32 White oversize trim ring. Specify O.D.
- 45 Gasket between ceiling and cone flange.
- 57 SofTex Titanium lower cone. (CP x .80)
- 70 SofTex Clear lower cone. (CP x .92)
- 71 SofTex Dune lower cone. (CP x .88)
- 77 SofTex Pewter lower cone. (CP x .85)
- 79 Extension collar for ceilings up to 2" thick.

- 90 SofTex Champagne Gold lower cone. (CP x .91)
- 91 SofTex Wheat lower cone. (CP x .87)
- 94 Custom color/finish. Specify. Consult factory.

Top Access

- TA Top access for servicing from above.

Other

- 99 Special modification. Consult factory.
- FS Additional in-line fuse. Not available with Option -98 (347V).
- LE With 4-pin electronic lamp. 3500°K standard. 82 CRI and 12,000 hour life. Specify wattage, style and color temperature.

¹ Visit www.kirlinlighting.com for most current performance / specifications.

SUBMITTAL DATA

APPROVAL STAMP

JOB NAME _____

TYPE _____

WATTAGE _____ VOLTAGE _____

CATALOG NUMBER _____

LIMITED WARRANTY: CATALOGED KIRLIN FIXTURES ARE WARRANTED FREE OF DEFECTS IN WORKMANSHIP OR MATERIAL FOR THREE YEARS FROM DATE OF PURCHASE; INSTALLED TO N.E.C. IN NORMAL USE. Manufacturer at his option will replace or repair such fixture or refund the purchase price on presentation of proof of purchase and defective fixture at the office of manufacturer within three years of original shipment. Liability of manufacturer is limited to the foregoing, and manufacturer shall not be liable for any other damages, direct or indirect, consequential, or otherwise, arising out of the use of the fixture, improper installation, or repair, or modification of the fixture without prior written authorization from the manufacturer will render the warranty void. Abnormal use, abuse of the fixture, improper installation, or repair, or modification of the fixture without prior written authorization from the manufacturer will render the warranty void.