

CATALOG #	TYPE	
JOB NAME	WATTAGE	VOLTAGE

7" 1 Triple 57 WATT MAXIMUM

FRR-07016

High Wattage Dual Reflector Downlight

THIS PRODUCT IS NO LONGER AVAILABLE

Features

Lamp

- Designed for one 4-pin triple/four tube amalgam compact fluorescent lamp: 57W triple/four tube

Ballast: Multi Voltage

- Installed electronic high power factor ballast for lower wattages: Option -4
- 120-277 multi-volt; 50/60 Hz. THD < 10%.
- ClickQuick connectors for easy service.
- Cold weather -22°F (-30°C).
- End of lamp life protection circuit. RFI filter.
- Internally fused. Also see Option -FS

Reflector

- Upper: Specular Alzak® aluminum.
- Lower: Low reflectance (L.I.) Alzak aluminum, one piece, self-flanged.
- See Options for other finishes.

Aluminum Housing

- Acrylic enamel. Rustproof: Exceeds 1000 hour ASTM 5% salt spray test.

- Light weight: Minimizes ceiling load.
- Control operation: Extends lamp life.
- Energy efficient: Operated through aperture.
- Bladeless: No star trails.

Outlet Box

- Prewired 14 GA (NEC) galvanized steel, UL listed, 1/2" and 3/4" knockouts.

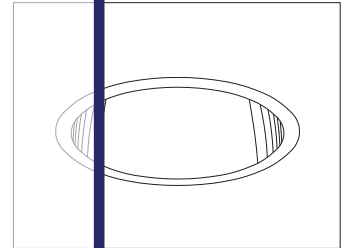
Installation

- 27" galvanized hanger bars with adjustable mounting plate for ceiling.
- Accesses do not obstruct wiring locations.

- UL Listed: Lists for use in dry, damp or wet locations.
- UL Type: Class II, 0 or 15° options for ceiling.
- UL Marking: Marked for use in Class II, 0 or 15° locations.

Three Year Limited Warranty

- Complete standard fixture and ballast.



Recessed Round
Open
Dual Reflector

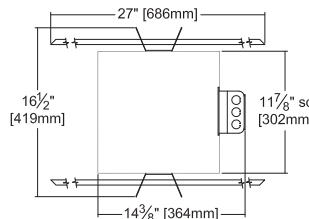
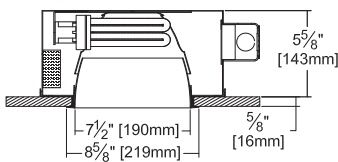
Selected Optional Trims:

- All White Option -30
- Softex Titanium Option -57
- Softex Dune Option -71
- Softex Pewter Option -77
- Softex Wheat Option -91
- Black OptiGroove Option -OG

Please consult **QUOTATIONS** for the best alternative.

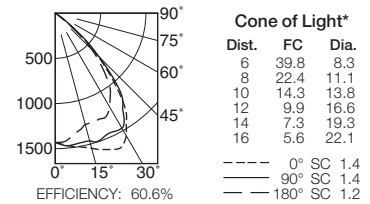
Performance at a Glance

FRR-07016



Ceiling Cut-out
8" Dia.

FRR-07016 (1 Triple 57W)



Cone of Light Key

- Ft. Distance from fixture
- FC Footcandles at nadir (0°)
- Dia. Circle of light at 50% of FC
- * Dia. (in ft.) shown is where FC value is half the FC at nadir.

THE KIRLIN COMPANY

3401 EAST JEFFERSON AVENUE • DETROIT, MICHIGAN 48207-4232
(313) 259-6400 • Fax: (313) 259-9409 OR (313) 259-3121 • www.kirlinlighting.com

RENAISSANCE SERIES
COMPACT FLUORESCENT LIGHTING

MAXIMUM WATTAGE

1 Triple 57

CATALOG NUMBER

FRR-07016

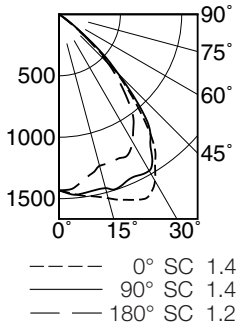
DUE TO OUR CONTINUING EFFORT TO IMPROVE PRODUCTS, TECHNICAL INFORMATION IS SUBJECT TO CHANGE WITHOUT NOTICE.

Alzak® is a registered trademark of ALCOA.

Detailed Photometry - Installed Fixture

Photometry from I.T.L., Boulder, CO

FRR-07016 (1 Triple 57)



EFFICIENCY : 60.6%

CANDLEPOWER DISTRIBUTION					
	0.0	45.0	90.0	135.0	180.0
0	1432	1432	1432	1432	1432
5	1469	1481	1474	1454	1416
15	1549	1582	1464	1394	1276
25	1656	1596	1456	1294	1280
35	1369	1408	1298	1168	1060
45	650	741	678	624	571
55	43	72	78	62	33
65	6	5	6	5	6
75	2	2	2	2	2
85	0	0	0	0	0
90	0	0	0	0	0

COEFFICIENTS OF UTILIZATION						
RF	20					
	80			50		
RC	70	50	30	10	50	30
RW	70	50	30	10	50	30
1	68	66	65	63	63	61
2	64	61	58	56	58	54
3	60	56	52	49	53	50
4	56	51	47	44	49	46
5	53	47	43	40	45	42
6	49	43	39	36	42	38
7	46	40	35	32	38	35
8	43	37	32	29	36	32
9	41	34	30	27	33	29
10	38	32	27	25	31	25

ITL TEST #54941 *LER=36.5 •AEC=\$6.58

* LER = Luminaire Efficiency Rating

$$LER = \frac{\text{Luminaire Effic.} \times \text{Total Lamp Lumens} \times \text{Ballast Factor}}{\text{Input Watts}}$$

• AEC = Annual Energy Cost per 1000 lumens (based on 3000 hours use @ \$0.08 KWH).

Options

Ballast, Wattage and Voltage

- 39 Installed electronic dimming ballast. Indoor use only. 10°C (50°F) minimum start. Please specify wattage and voltage; consult factory to request brand. Not available with Option -75, -CR or -HR.
- 43 Lower wattage. FRR-07016: see FRR-07015 Type IC.
- 97 Specify other voltage. Consult factory.
- 98 347 volt, 50/60 Hz. input. Consult factory.

Emergency Ballast - Specify Voltage¹

IRemote (field mounted) ballast, test switch and indicator light. Suitable for damp locations from 0° to 50°C (32° to 122°F) or with Cold Weather version (see or -CR) -20° to 55°C (-4° to 131°F).

- 75 Remote 1-lamp EM ballast. Specify voltage.
- CR Remote cold weather (-20° to 55°C) 1-lamp EM ballast. Specify voltage.
- HR¹ Remote higher lumen (up to 1250) 1-lamp EM ballast. 13-42W only. Specify voltage.

Trims

- 30 All white lower cone. (CP x .95)
- 31 White acrylic enameled lower cone flange.
- 32 White oversize trim ring. Specify O.D.
- 45 Gasket between ceiling and cone flange.
- 57 SofTex Titanium lower cone. (CP x .80)
- 70 SofTex Clear lower cone. (CP x .92)
- 71 SofTex Dune lower cone. (CP x .88)
- 77 SofTex Pewter lower cone. (CP x .85)
- 79 Extension collar for ceilings up to 2" thick.

- 90 SofTex Champagne Gold lower cone. (CP x .91)
- 91 SofTex Wheat lower cone. (CP x .87)
- 94 Custom color/finish. Specify. Consult factory.
- OG OptiGroove black seamless tapered aluminum cone with white flange. (CP x .70)

Other

- 99 Special modification. Consult factory.
- FS Additional in-line fuse. Not available with Option -98 (347V).
- LE With 4-pin electronic lamp. 3500°K standard. 82 CRI and 12,000 hour life. Specify wattage, style and color temperature.

¹ Visit www.kirlinlighting.com for most current performance / specifications.

SUBMITTAL DATA

APPROVAL STAMP

JOB NAME

TYPE

WATTAGE

VOLTAGE

CATALOG NUMBER

LIMITED WARRANTY: CATALOGED KIRLIN FIXTURES ARE WARRANTED FREE OF DEFECTS IN WORKMANSHIP OR MATERIAL FOR THREE YEARS FROM DATE OF PURCHASE. INSTALLLED TO N.E.C. IN NORMAL USE. Manufacturer at the option will inspect or repair such fixtures or refund the purchase price on presentation of proof of purchase and defective fixture at the offices of manufacturer within three years of original shipment. Liability of manufacturer is limited to the foregoing, and manufacturer shall not be liable for any other damages, direct or indirect, sustained or suffered by purchaser or any person. This warranty is supplied to the buyer in place of all other warranties, expressed or implied. Seller does not warrant as to merchantability or fitness for a particular use, nor will any oral statement constitute a warranty or amend this specific warranty. Abnormal use, abuse of the fixture, improper installation, or repair, or modification of the fixture without prior written authorization from the manufacturer will render the warranty void.