

CATALOG #	TYPE	
JOB NAME	WATTAGE	VOLTAGE

7" 1 Triple 42 WATT MAXIMUM

FRR-07015

Type C with Exceptional Photometry
in Popular Dual Reflector Design

THIS PRODUCT IS NO LONGER AVAILABLE

Features

Lamp

- Designed for one 4-pin triple tube amalgam or quad compact fluorescent lamp:

Ballast: Multi Wattage/Voltage

- Installed electronic high power factor thermal protected. For lower wattages: Option -43.
- 120-277 multi-volt; 50/60 Hz. THD < 10%.
- ClickQuick connectors for easy service.
- Cold weather -22°F (-30°C).
- End of lamp life protection circuit. RFL.
- Internally fused. Also see Option -F5.

Reflector

- Upper: Spectular Alzak® aluminum.
- Lower: Low ridescence (L.I.) Alzak® aluminum one piece, self-flanged.
- See Options for other finishes.

Aluminum Housing

- Acrylic enamel. Dustproof: Exceeds 1000-hour ASTM 9% salt spray test.

- Lightweight: Minimizes ceiling load.
- Operation: Extended life.
- Easy luminaire service through aperture.
- Built-in plastic trim.

- Prewired 14 GA (NEC) galvanized steel, UL listed. 1/2" and 3/4" knockouts.

Installation

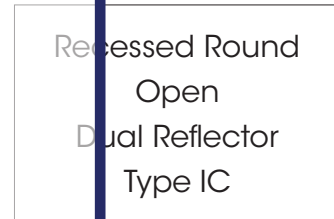
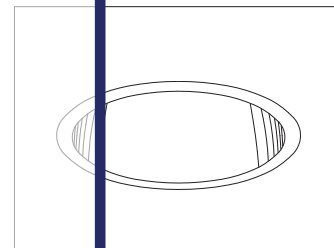
- 27" galvanized hanger bars with adjustable mounting brackets (2) supplied.
- Use in indoor or outdoor locations.

UL, C-UL (Canada) Listings

- UL listed for use in damp or wet locations.
- UL Type of application: Limited energy storage.
- Through-branch conductors (6 #12).

Three Year Limited Warranty

- Complete store at your local Kirlin.



Recessed Round
Open
Dual Reflector
Type IC

Selected Optional Trims:

- All White Option -30
- Softex Titanium Option -57
- Softex Dune Option -71
- Softex Pewter Option -77
- Softex Wheat Option -91
- Black OptiGroove Option -OG

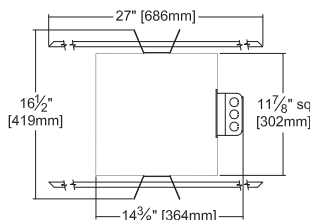
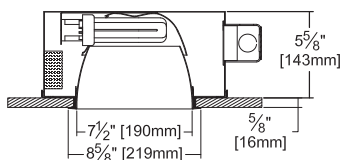
Please consult

QUOTATIONS

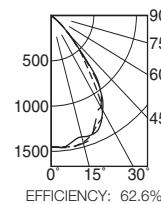
for the best alternative.

Performance at a Glance

FRR-07015



FRR-07015 (1 Triple 42W)



Cone of Light*

Dist.	FC	Dia.
6	40.3	6.8
8	22.7	9.1
10	14.5	11.3
12	10.1	13.6
14	7.4	15.8
16	5.7	18.1

---	0° SC	1.2
---	45° SC	1.2
---	90° SC	1.2

EFFICIENCY: 62.6%

Ceiling Cut-out
8" Dia.

Cone of Light Key

- Ft. Distance from fixture
- FC Footcandles at nadir (0°)
- Dia. Circle of light at 50% of FC
- * Dia. (in ft.) shown is where FC value is half the FC at nadir.

THE KIRLIN COMPANY

3401 EAST JEFFERSON AVENUE • DETROIT, MICHIGAN 48207-4232
(313) 259-6400 • Fax: (313) 259-9409 OR (313) 259-3121 • www.kirlinlighting.com

RENAISSANCE SERIES
COMPACT FLUORESCENT LIGHTING

MAXIMUM WATTAGE

1 Triple 42

CATALOG NUMBER

FRR-07015

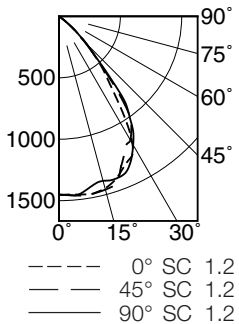
DUE TO OUR CONTINUING EFFORT TO IMPROVE PRODUCTS,
TECHNICAL INFORMATION IS SUBJECT TO CHANGE WITHOUT NOTICE.

Alzak® is a registered trademark of ALCOA.

Detailed Photometry - Installed Fixture

Photometry from I.T.L., Boulder, CO

FRR-07015 (1 Triple 42)



EFFICIENCY : 62.6%

CANDLEPOWER DISTRIBUTION					
	0.0	22.5	45.0	67.5	90.0
0	1451	1451	1451	1451	1451
5	1455	1455	1463	1465	1463
15	1449	1468	1460	1004	1386
25	1310	1307	1251	1309	1349
35	821	936	1018	1000	1006
45	318	329	307	302	306
55	13	12	8	6	5
65	0	0	0	0	0
75	0	0	0	0	0
85	0	0	0	0	0
90	0	0	0	0	0

COEFFICIENTS OF UTILIZATION						
RF	20					
	80			50		
RC	70	50	30	10	50	30
RW	70	50	30	10	50	30
1	71	69	67	66	65	64
2	67	64	61	59	60	58
3	63	59	55	53	56	54
4	59	54	51	48	52	49
5	56	50	46	43	49	45
6	53	47	43	40	45	42
7	50	43	39	36	42	39
8	47	40	36	33	39	36
9	44	38	34	31	37	33
10	42	35	31	29	34	31

ITL TEST #45250 *LER=36.8 •AEC=\$6.52

* LER = Luminaire Efficiency Rating

$$LER = \frac{\text{Luminaire Effic.} \times \text{Total Lamp Lumens} \times \text{Ballast Factor}}{\text{Input Watts}}$$

• AEC = Annual Energy Cost per 1000 lumens (based on 3000 hours use @ \$0.08 KWH).

Options

Ballast, Wattage and Voltage

- 39 Installed electronic dimming ballast. Not Type IC listed. Indoor use. 10°C (50°F) minimum start. Specify wattage, voltage and brand.
- 43 Lower wattage: for either 4-pin electronic 18W triple/quad or 13W quad (only). Specify wattage.
- 97 Specify other voltage. Consult factory.
- 98 347 volt, 50/60 Hz. input. Consult factory.

Emergency Ballast - Specify Voltage¹

Internal (factory installed) ballast, test switch and indicator light. Suitable for damp locations from 0° to 50°C (32° to 122°F) or with Cold Weather version (see -CE) -20° to 55°C (-4° to 131°F).

- 73 Internal 1-lamp EM ballast. Specify voltage.
- CE Internal cold weather (-20° to 55°C) 1-lamp EM ballast. Specify voltage.
- HE¹ Internal higher lumen (up to 1250) 1-lamp EM ballast. 13-42W only. Specify voltage.

Trims

- 30 All white lower cone. (CP x .95)
- 31 White acrylic enameled lower cone flange.
- 32 White oversize trim ring. Specify O.D.
- 45 Gasket between ceiling and cone flange.
- 57 SofTex Titanium lower cone. (CP x .80)
- 70 SofTex Clear lower cone. (CP x .92)
- 71 SofTex Dune lower cone. (CP x .88)
- 77 SofTex Pewter lower cone. (CP x .85)
- 79 Extension collar for ceilings up to 2" thick.
- 90 SofTex Champagne Gold lower cone. (CP x .91)

- 91 SofTex Wheat lower cone. (CP x .87)
- 94 Custom color/finish. Specify. Consult factory.
- OG OptiGroove black seamless tapered aluminum cone with white flange. (CP x .70)

ShatterGuard™ Shield (Beneath Lamp)

- 17 .187" prismatic high strength acrylic.
- SG .125" clear polycarbonate.

Other

- 99 Special modification. Consult factory.
- FS Additional in-line fuse. Not available with Option -98 (347V).
- LE With 4-pin electronic lamp. 3500°K standard. 82 CRI and 12,000 hour life. Specify wattage, style and color temperature.

¹ Visit www.kirlinlighting.com for most current performance / specifications.

SUBMITTAL DATA

APPROVAL STAMP

JOB NAME

TYPE

WATTAGE

VOLTAGE

CATALOG NUMBER

LIMITED WARRANTY: CATALOGED KIRLIN FIXTURES ARE WARRANTED FREE OF DEFECTS IN WORKMANSHIP OR MATERIAL FOR THREE YEARS FROM DATE OF PURCHASE. INSTALLLED TO N.E.C. IN NORMAL USE. Manufacturer at his option will inspect or repair such fixtures or refund the purchase price on presentation of a proof of purchase and defective fixture at the offices of manufacturer within three years of original shipment. Liability of manufacturer is limited to the foregoing, and manufacturer shall not be liable for any other damages, direct or indirect, sustained or suffered by purchaser or any person. This warranty is supplied to the buyer in place of all other warranties, expressed or implied. Seller does not warrant as to merchantability or fitness for a particular use, nor will any oral statement constitute a warranty or amend this specific warranty. Abnormal use, abuse of the fixture, improper installation, or repair, or modification of the fixture without prior written authorization from the manufacturer will render the warranty void.