

CATALOG #	TYPE	
JOB NAME	WATTAGE	VOLTAGE

7" 1 Triple 42 WATT MAXIMUM

FRR-07007

Type C Shallow Plenum 42 Watt

THIS PRODUCT IS NO LONGER AVAILABLE

Features

Lamp

- Designed for one 4-pin tri-pin fluorescent lamp: 42/32/26W triple or 26W quad.

Ballast: Multi Wattage/Voltage

- Installed electronic high power factor ballast for lower wattages: Opti-Start.
- 120-277 multi-volt; 50/60 Hz. THD < 10%.
- ClickQuick connectors for easy service.
- Cold weather -22°F (-30°C).
- End of lamp life protection circuit. RFI filter.
- Internally fused. Also see Option -FS.

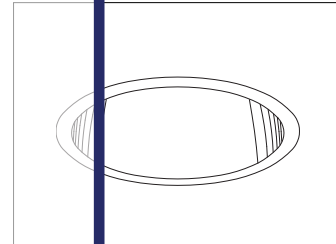
Reflector

- Low iridescence (L.I.) Alzak® aluminum, one piece, self-finished.
- See Options for other finishes.

Aluminum Housing: Shallow 6" Depth

- Acrylic endcap. Rustproof: Exceeds 1000 hour ASTM 5% salt spray test.

- Light weight (Milligram) design.
- Cool operation: No hot spots on bulb.
- Entirely in service for 20 years.
- Built-in plaster frame.
- Air Tight design. See Option -AT.
- Paint box: Powder 14 ga. (N) galvanized steel, UL listed 1/2" thick for brackets.
- Installation:
 - 27" galvanized hanger bars with adjustable mounting brackets (2) supplied.
 - Recesses indoor or outdoor in covered locations.
- UL (CUL) Listing:
 - UL Classified for use on covered ceilings.
 - Type IC. Approved for direct contact with insulation.
 - Through hanger conductor 6/29.
 - Three Year Limited Warranty.
 - Complete standard fixture and ballast.



Recessed Round
Open
Single Reflector
Shallow Plenum
Type IC

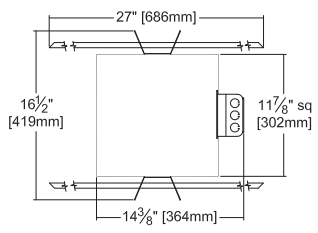
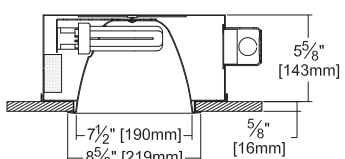
Selected Optional Trims:

- Glow Ring Option -33
- Softex Dune Option -71
- Softex Gold Option -90
- Softex Wheat Option -91

Please consult **QUOTATIONS** for the best alternative.

Performance at a Glance

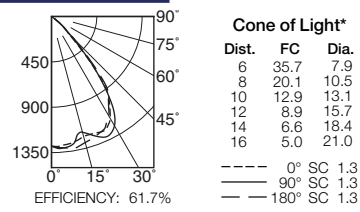
FRR-07007



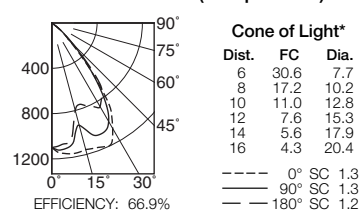
Ceiling Cut-out
8" Dia.

Cone of Light Key
Ft. Distance from fixture
FC Footcandles at nadir (0°)
Dia. Circle of light at 50% of FC
 • Dia. (in ft.) shown is where FC value is half the FC at nadir.

FRR-07007 (1 Triple 42W)



FRR-07007 (1 Triple 32W)



THE KIRLIN COMPANY

3401 EAST JEFFERSON AVENUE • DETROIT, MICHIGAN 48207-4232
 (313) 259-6400 • Fax: (313) 259-9409 OR (313) 259-3121 • www.kirlinlighting.com

RENAISSANCE SERIES
COMPACT FLUORESCENT LIGHTING

MAXIMUM WATTAGE
1 Triple 42

CATALOG NUMBER
FRR-07007

DUE TO OUR CONTINUING EFFORT TO IMPROVE PRODUCTS, TECHNICAL INFORMATION IS SUBJECT TO CHANGE WITHOUT NOTICE.

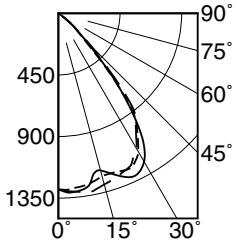
Alzak® is a registered trademark of ALCOA.

BULLETIN 06-07FL
 REV SEPT 2015

Detailed Photometry - Installed Fixture

Photometry from I.T.L., Boulder, CO

FRR-07007 (1 Triple 42)



----- 0° SC 1.3
 _____ 90° SC 1.3
 - - - - - 180° SC 1.3

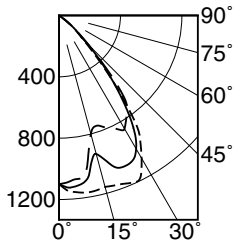
EFFICIENCY : 61.7%

CANDLEPOWER DISTRIBUTION					
	0.0	45.0	90.0	135.0	180.0
0	1286	1286	1286	1286	1286
5	1281	1286	1310	1310	1307
15	1232	1253	1188	1288	1294
25	1248	1319	1312	1293	1235
35	995	1068	1030	981	983
45	250	278	296	246	334
55	31	16	12	12	12
65	3	3	4	3	3
75	2	2	2	2	2
85	0	0	0	0	0
90	0	0	0	0	0

COEFFICIENTS OF UTILIZATION							
RF	20						
	80			50			
	70	50	30	10	50	30	10
1	70	68	66	65	64	63	62
2	66	62	60	57	59	57	55
3	62	58	54	51	55	52	50
4	58	53	49	46	51	48	45
5	55	49	45	42	47	44	41
6	51	45	41	38	44	40	38
7	48	42	38	35	41	37	35
8	46	39	35	32	38	34	32
9	43	36	32	30	35	32	29
10	41	34	30	27	33	30	27

ITL TEST #54831 *LER=40.7 •AEC=\$5.90

FRR-07007 (1 Triple 32)



----- 0° SC 1.3
 _____ 90° SC 1.3
 - - - - - 180° SC 1.2

EFFICIENCY : 66.9%

CANDLEPOWER DISTRIBUTION					
	0.0	45.0	90.0	135.0	180.0
0	1100	1100	1100	1100	1100
5	1155	1141	1121	1093	1075
15	1157	1147	934	827	800
25	1196	1139	1070	899	805
35	887	934	799	738	771
45	224	262	260	191	277
55	24	13	13	11	8
65	2	2	3	3	2
75	0	0	0	1	2
85	0	0	0	0	0
90	0	0	0	0	0

COEFFICIENTS OF UTILIZATION							
RF	20						
	80			50			
	70	50	30	10	50	30	10
1	76	73	72	70	69	68	67
2	71	68	65	62	64	62	60
3	67	62	59	56	60	57	54
4	63	57	53	50	55	52	49
5	59	53	49	45	51	48	45
6	56	49	45	41	47	44	41
7	52	45	41	38	44	40	37
8	49	42	38	35	41	37	34
9	47	39	35	32	38	34	32
10	44	37	32	29	36	32	29

ITL TEST #54832 *LER=42.8 •AEC=\$5.61

* LER = Luminaire Efficiency Rating
 LER = Luminaire Effic. x Total Lamp Lumens x Ballast Factor
 Input Watts

* AEC = Annual Energy Cost per 1000 lumens
 (based on 3000 hours use @ \$0.08 kWh).

LIMITED WARRANTY: CATALOGED KIRLIN FIXTURES ARE WARRANTED FREE OF DEFECTS IN WORKMANSHIP OR MATERIAL FOR THREE YEARS FROM DATE OF PURCHASE. INSTALLER TO N.E.C. IN NORMAL USE. Manufacturer at his option will replace or repair such fixture or refund the purchase price on presentation of proof of purchase and defective fixture at the offices of manufacturer within three years of original shipment. Liability of manufacturer is limited to the foregoing, and manufacturer shall not be liable for any other damages, direct or indirect, sustained or suffered by purchaser or any person. This warranty is supplied to the buyer in place of all other warranties, expressed or implied. Seller does not warrant as to merchantability or fitness for a particular use, nor will any oral statement constitute a warranty or amend this specific warranty. Abnormal use, abuse of the fixture, improper installation, repair, or modification of the fixture without prior written authorization from the manufacturer will render the warranty void.

Options

Ballast, Wattage and Voltage

- 39 Installed electronic dimming ballast. Not Type IC listed. Indoor use. 10°C (50°F) minimum start. Specify wattage, voltage and brand.
- 43 Lower wattage: for either 4-pin electronic 18W triple/quad or 13W quad (only). Specify wattage.
- 97 Specify other voltage. Consult factory.
- 98 347 volt, 50/60 Hz. input. Consult factory.

Emergency Ballast - Specify Voltage¹

- Internal (factory installed) ballast, test switch and indicator light. Suitable for damp locations from 0° to 50°C (32° to 122°F) or with Cold Weather version (see -CE) -20° to 55°C (-4° to 131°F).
- 73 Internal 1-lamp EM ballast. Specify voltage.

- CE Internal cold weather (-20° to 55°C) 1-lamp EM ballast. Specify voltage.
- HE¹ Internal higher lumen (up to 1250) 1-lamp EM ballast. 13-42W only Specify voltage.

Trims

- 31 White acrylic enameled reflector flange.
- 32 White oversize trim ring. Specify O.D.
- 33 Decorative Glow Ring suspended beneath trim assembly.
- 45 Gasket between ceiling and reflector flange.
- 70 SofTex Clear reflector. (CP x .89)
- 71 SofTex Dune reflector. (CP x .85)
- 79 Extension collar for ceilings up to 2" thick.
- 90 SofTex Champagne Gold reflector. (CP x .88)
- 91 SofTex Wheat reflector. (CP x .83)
- 94 Custom color/finish. Specify. Consult factory.

- OG OptiGroove black seamless tapered aluminum reflector with white flange. (CP x .80)

Other

- 99 Special modification. Consult factory.
- AT Air tight with Type IC. Meets / exceeds ASTM E283 restricted airflow of 2 CFM maximum.
- FS Additional in-line fuse. Not available with Option -98 (347V).
- LE With 4-pin electronic lamp. 3500°K standard. 82 CRI and 12,000 hour life. Specify wattage, style and color temperature.



¹ Visit www.kirlinlighting.com for most current performance / specifications.

SUBMITTAL DATA

JOB NAME

TYPE

WATTAGE

VOLTAGE

CATALOG NUMBER

APPROVAL STAMP

² See GRR-07007 specification sheet or "Gazelle Express Program" brochure for complete details. Limited option availability.