

CATALOG #	TYPE	
JOB NAME	WATTAGE	VOLTAGE

6" 1 Triple 42 WATT MAXIMUM

FRR-06034

## Super Shallow Lensed Downlight

**THIS PRODUCT IS NO LONGER AVAILABLE**

### Features

#### Lamp

- Designed for one 4-pin triple tube amalgam or quad compact fluorescent lamp: 42/32/26W triple or 26W quad.

#### Ballast: Multi-Wattage/Voltage

- Installed electronic high power factor ballast thermally protected.
- 120-277 multi-volt; 50/60 Hz. THD < 10%.
- ClickQuick connectors for easy service.
- Cold weather rated to -22°F (-30°C).
- End of lamp life protection circuit. RFI filter.
- Internally fused. Also see Option -FR.

#### Reflector

- Specular Alzak® aluminum.

#### Trim Assembly

- White flat seamless aluminum or stainless steel flanged.
- Tempered prismatic C#73 specular optional lenses or many optional lenses.

Aluminum housing. Super Shallow Depth. Acrylene lens. Fast Start. Extra 100 hour ASTM salt spray test.

- Lightweight: Minimizes ceiling load.
- Operation: Extra long operation. Extra lumens served through aperture. Built-in plastic trim.
- Prewired 14 GA (NEC) galvanized steel, UL listed. 1/2" and 3/4" knockouts.

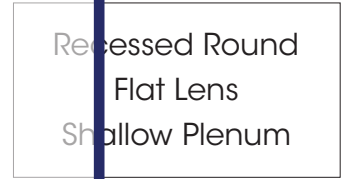
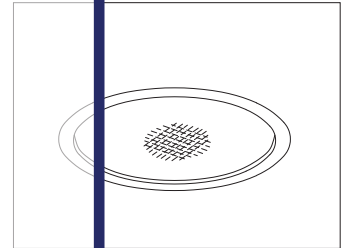
#### Installation

- 27" galvanized hanger bars with adjustable mounting brackets (2) supplied.

For uses not covered by this listing, please consult your distributor.

#### UL, C-UL (Canada) Listings

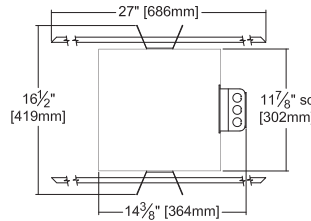
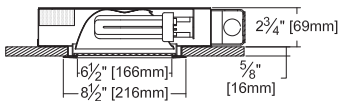
- UL listed for use in hazardous locations.
- Complete standard fixture and ballast.



**Please consult your distributor for the best alternative.**

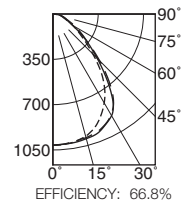
### Performance at a Glance

FRR-06034



Ceiling Cut-out  
8" Dia.

FRR-06034 (1 Triple 42W)



Cone of Light*		
Dist.	FC	Dia.
6	28.1	7.6
8	15.8	10.1
10	10.1	12.7
12	7.0	15.2
14	5.2	17.7
16	4.0	20.3
---	0° SC	1.2
---	90° SC	1.3
---	180° SC	1.3

#### Cone of Light Key

- Ft. Distance from fixture
- FC Footcandles at nadir (0°)
- Dia. Circle of light at 50% of FC
- \* Dia. (in ft.) shown is where FC value is half the FC at nadir.

## THE KIRLIN COMPANY

3401 EAST JEFFERSON AVENUE • DETROIT, MICHIGAN 48207-4232  
(313) 259-6400 • Fax: (313) 259-9409 OR (313) 259-3121 • www.kirlinlighting.com

RENAISSANCE SERIES  
COMPACT FLUORESCENT LIGHTING

MAXIMUM WATTAGE

1 Triple 42

CATALOG NUMBER

FRR-06034

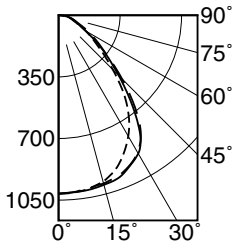
DUE TO OUR CONTINUING EFFORT TO IMPROVE PRODUCTS, TECHNICAL INFORMATION IS SUBJECT TO CHANGE WITHOUT NOTICE.

Alzak® is a registered trademark of ALCOA.

**Detailed Photometry - Installed Fixture**

Photometry from I.T.L., Boulder, CO

**FRR-06034 (1 Triple 42)**



----- 0° SC 1.2  
 \_\_\_\_\_ 90° SC 1.3  
 - - - - - 180° SC 1.3

EFFICIENCY : 66.8%

CANDLEPOWER DISTRIBUTION					
	0.0	45.0	90.0	135.0	180.0
0	1013	1013	1013	1013	1013
5	1010	1011	1009	1007	1008
15	978	993	997	994	989
25	872	921	950	932	946
35	696	773	805	800	816
45	437	473	485	491	511
55	241	242	260	259	278
65	123	130	128	138	149
75	71	75	81	83	82
85	22	24	27	28	26
90	0	0	0	0	0

COEFFICIENTS OF UTILIZATION						
RF	20					
	80			50		
RC	70	50	30	10	50	30
RW	70	50	30	10	50	30
1	74	71	69	66	67	65
2	68	63	60	56	60	57
3	63	57	52	48	54	50
4	58	51	46	42	49	45
5	54	47	41	37	44	40
6	51	42	37	33	41	36
7	47	39	33	30	37	33
8	44	36	30	27	34	30
9	41	33	28	24	32	27
10	38	31	26	22	30	25

ITL TEST #52486 \*LER=47.4 •AEC=\$5.86

\* LER = Luminaire Efficiency Rating

$$LER = \frac{\text{Luminaire Effic.} \times \text{Total Lamp Lumens} \times \text{Ballast Factor}}{\text{Input Watts}}$$

• AEC = Annual Energy Cost per 1000 lumens (based on 3000 hours use @ \$0.08 KWH).

**Options**

**Ballast, Wattage and Voltage**

- 39 Installed electronic dimming ballast. Indoor use. 10°C (50°F) minimum start. Specify wattage, voltage and brand. Not available with Option -75, -CR or -HR.
- 97 Specify other voltage. Consult factory.
- 98 347 volt, 50/60 Hz. input. Consult factory.

**Emergency Ballast - Specify Voltage<sup>1</sup>**

Remote (field mounted) ballast, test switch and indicator light. Suitable for damp locations from 0° to 50°C (32° to 122°F) or with Cold Weather version (see -CR) -20° to 55°C (-4° to 131°F). NOT AVAILABLE WITH OPTION -43.

- 75 Remote 1-lamp EM ballast. Specify voltage. 13-42W only.
- CR Remote cold weather (-20° to 55°C) 1-lamp EM ballast. Specify voltage. 13-42W only.
- HR<sup>1</sup> Remote higher lumen (up to 1250) 1-lamp EM ballast. 13-42W only. Specify voltage.

**Lenses and Trims**

- 13 Vandal resistant tempered prismatic C#73 spread lens above 1/8" flat polycarbonate.
- 17 .187" prismatic flat high strength acrylic.
- 18 Opal flat glass diffuser.
- 21 White flat polycarbonate diffuser.
- 32 White oversize trim ring. Specify O.D.
- 45 Gasket between ceiling and trim flange.

- 46 Gasket between trim and lens.
- 94 Custom color/finish. Specify. Consult factory.
- FR Fresnel tempered glass lens.
- UV UV filter. Consult factory.

**Other**

- 99 Special modification. Consult factory.
- FS Additional in-line fuse. Not available with Option -98 (347V).
- LE With 4-pin electronic lamp. 3500°K standard. 82 CRI and 12,000 hour life. Specify wattage, style and color temperature.

<sup>1</sup> Visit [www.kirlinlighting.com](http://www.kirlinlighting.com) for most current performance / specifications.

**SUBMITTAL DATA**

JOB NAME

TYPE

WATTAGE

VOLTAGE

CATALOG NUMBER

**APPROVAL STAMP**

LIMITED WARRANTY: CATALOGED KIRLIN FIXTURES ARE WARRANTED FREE OF DEFECTS IN WORKMANSHIP OR MATERIAL FOR THREE YEARS FROM DATE OF PURCHASE. INSTALLATION TO N.E.C. IN NORMAL USE. Manufacturer at the option will replace or repair such fixture or refund the purchase price on presentation of proof of purchase and defective fixture at the offices of manufacturer within three years of original shipment. Liability of manufacturer is limited to the foregoing, and manufacturer shall not be liable for any other damages, direct or indirect, sustained or suffered by purchaser or any person. This warranty is supplied to the buyer in place of all other warranties, expressed or implied. Seller does not warrant as to merchantability or fitness for a particular use, nor will any oral statement constitute a warranty or amend this specific warranty. Abnormal use, abuse of the fixture, improper installation, or repair, or modification of the fixture without prior written authorization from the manufacturer will render the warranty void.