

CATALOG #	TYPE	
JOB NAME	WATTAGE	VOLTAGE

6" 1 Triple 42 WATT MAXIMUM

FRR-06027

Lensed Wall Wash in Shallow Housing

Features

Lamp

- Designed for one 4-pin tri-pin tube, amalgam compact fluorescent lamp.
- 42/32/26W triple or 26W quad.

Ballast: Multi Wattage/Voltage

- Installed electronic high power factor, internally protected.
- For lower wattages: Optic 3.
- 120-277 multi-volt; 50/60 Hz. THD < 3%.
- ClickQuick connectors for easy service.
- Cold weather -22°F (-30°C).
- End of lamp life protection circuit. RFI filter.
- Internally fused. Also see Option -FS.

Trim Assembly

- Upper: Specular Alzak® aluminum.
- Lower: Low-iridescence (L.I.) Alzak® aluminum, self-flanged.
- Tempered prismatic C#73 spread lens.

Aluminum Housing

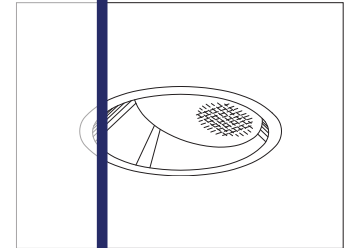
- Acrylic enamel. Rustproof: Exposed to 100 hour ASTM 9% salt spray test.

THIS PRODUCT IS NO LONGER AVAILABLE

Please consult

QUOTATIONS

for the best alternative.

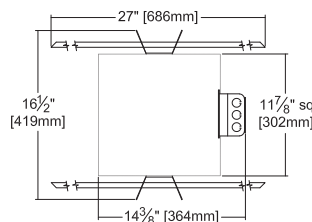
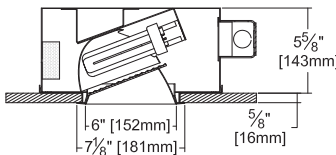


Recessed Round
Lensed
Wall Wash
Shallow Plenum
Type IC

Performance at a Glance

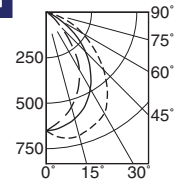
FRR-06027 (1 Triple 42W)

FRR-06027



Ceiling Cut-out
6 1/2" Dia.

WALL > --- 0°
--- 90°
--- 180°
EFFICIENCY: 38.0%



DISTANCE FROM CEILING IN FEET	SINGLE FIXTURE					MULTIPLE FIXTURES					
	1'	2'	3'	4'		3' CENTERS		4' CENTERS			
FIXTURE INSTALLED 3" FROM WALL											
Footcandle Distribution on Wall Surface											
1	8.1	6.1	3.5	1.5	0.7	12.1	11.3	12.1	10.9	8.9	10.9
2	17.0	14.0	8.5	4.3	2.0	26.9	26.3	26.9	20.8	18.3	20.8
3	17.2	14.9	10.2	6.0	3.3	31.5	31.4	31.5	24.7	23.2	24.7
4	13.7	12.3	9.2	6.1	3.8	28.9	29.1	28.9	22.5	21.8	22.5
5	9.9	9.0	7.2	5.1	3.5	24.2	24.4	24.2	18.9	18.6	18.9
6	7.0	6.7	5.6	4.3	3.2	19.6	19.9	19.6	15.6	15.6	15.6
7	5.1	4.9	4.2	3.5	2.7	16.1	16.4	16.1	13.0	13.0	13.0
8	3.9	3.9	3.5	2.8	2.3	13.5	13.8	13.5	11.1	11.1	11.1
9	3.0	3.0	2.8	2.4	2.1	11.9	11.4	11.9	9.5	9.0	9.5

THE KIRLIN COMPANY

3401 EAST JEFFERSON AVENUE • DETROIT, MICHIGAN 48207-4232
(313) 259-6400 • Fax: (313) 259-9409 OR (313) 259-3121 • www.kirlinlighting.com

RENAISSANCE SERIES
COMPACT FLUORESCENT LIGHTING

MAXIMUM WATTAGE

1 Triple 42

CATALOG NUMBER

FRR-06027

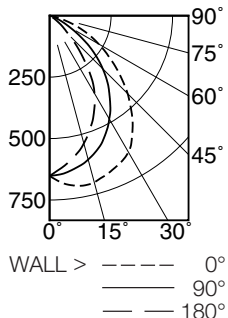
DUE TO OUR CONTINUING EFFORT TO IMPROVE PRODUCTS, TECHNICAL INFORMATION IS SUBJECT TO CHANGE WITHOUT NOTICE.

Alzak® is a registered trademark of ALCOA.

Detailed Photometry - Installed Fixture

Photometry from I.T.L., Boulder, CO

FRR-06027 (1 Triple 42)



EFFICIENCY : 38.0%

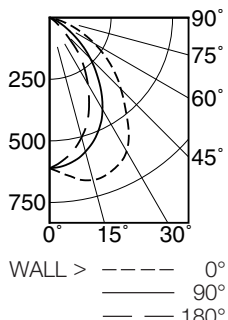
CANDLEPOWER DISTRIBUTION					
	0.0	45.0	90.0	135.0	180.0
0	652	652	652	652	652
5	686	671	645	624	618
15	702	669	606	559	538
25	667	611	535	457	428
35	586	519	429	323	285
45	449	396	306	175	115
55	298	261	163	60	33
65	166	130	52	11	5
75	45	31	5	3	2
85	2	1	0	0	0
90	0	0	0	0	0

ITL TEST #55301 LER=27.5 AEC=\$8.73

COEFFICIENTS OF UTILIZATION							
RF	20						
	80				50		
	70	50	30	10	50	30	10
1	55	53	52	50	50	49	48
2	51	48	46	44	46	44	42
3	48	44	41	38	42	39	37
4	45	40	37	34	38	36	34
5	42	37	33	31	35	32	30
6	39	34	30	28	33	30	27
7	37	31	28	25	30	27	25
8	35	29	25	23	28	25	23
9	33	27	23	21	26	23	21
10	31	25	22	19	24	21	19

* LER = Luminaire Efficiency Rating
LER = Luminaire Effic. x Total Lamp Lumens x Ballast Factor
Input Watts

FRR-06027 (1 Triple 32)



EFFICIENCY : 44.4%

CANDLEPOWER DISTRIBUTION					
	0.0	45.0	90.0	135.0	180.0
0	611	611	611	611	611
5	636	624	605	590	584
15	682	636	563	516	503
25	660	602	485	406	380
35	561	504	366	269	244
45	410	363	234	138	92
55	279	214	112	42	25
65	147	90	34	7	1
75	41	23	4	1	0
85	0	0	0	0	0
90	0	0	0	0	0

ITL TEST #53108 LER=29.7 AEC=\$8.08

COEFFICIENTS OF UTILIZATION							
RF	20						
	80				50		
	70	50	30	10	50	30	10
1	50	48	47	45	45	44	43
2	46	43	41	39	41	39	38
3	43	39	36	34	37	35	33
4	40	35	32	30	34	31	29
5	37	32	29	26	31	28	26
6	35	30	26	24	28	26	23
7	32	27	24	21	26	23	21
8	30	25	22	19	24	21	19
9	28	23	20	18	22	20	18
10	27	22	18	16	21	18	16

* AEC = Annual Energy Cost per
1000 lumens (based on 3000
hours use @ \$0.08 KWH).

Options

Ballast, Wattage and Voltage

- 39 Installed electronic dimming ballast. Not Type IC listed. Indoor use. 10°C (50°F) minimum start. Specify wattage, voltage and brand.
- 43 Lower wattage: for either 4-pin electronic 18W triple/quad or 13W quad (only). Specify wattage.
- 97 Specify other voltage. Consult factory.
- 98 347 volt, 50/60 Hz. input. Consult factory.

Emergency Ballast - Specify Voltage¹

Internal (factory installed) ballast, test switch and

indicator light. Suitable for damp locations from 0° to 50°C (32° to 122°F) or with Cold Weather version (see -CE) -20° to 55°C (-4° to 131°F).

- 73 Internal 1-lamp EM ballast. Specify voltage.
- CE Internal cold weather (-20° to 55°C) 1-lamp EM ballast. Specify voltage.
- HE¹ Internal higher lumen (up to 1250) 1-lamp EM ballast. 13-42W only. Specify voltage.

Trims

- 30 All white lower cone. (CP x .95)
- 31 White flange (only) on lower cone.
- 32 White oversize trim ring. Specify O.D.
- 45 Gasket between ceiling and cone flange.
- 57 SofTex Titanium lower cone. (CP x .80)

- 70 SofTex Clear lower cone. (CP x .92)
- 71 SofTex Dune lower cone. (CP x .88)
- 77 SofTex Pewter lower cone. (CP x .85)
- 90 SofTex Champagne Gold lower cone. (CP x .91)
- 91 SofTex Wheat lower cone. (CP x .87)
- 94 Custom color/finish. Specify. Consult factory.

Other

- 99 Special modification. Consult factory.
- FS Additional in-line fuse. Not available with Option -98 (347V).
- LE With 4-pin electronic lamp. 3500°K standard. 82 CRI and 12,000 hour life. Specify wattage, style and color temperature.

¹ Visit www.kirlinlighting.com for most current performance / specifications.

SUBMITTAL DATA

JOB NAME

TYPE

WATTAGE

VOLTAGE

CATALOG NUMBER

APPROVAL STAMP

LIMITED WARRANTY: CATALOGED KIRLIN FIXTURES ARE WARRANTED FREE OF DEFECTS IN WORKMANSHIP OR MATERIAL FOR THREE YEARS FROM DATE OF PURCHASE. INSTALLLED TO N.E.C. IN NORMAL USE. Manufacturer at the option will inspect or repair such fixtures or refund the purchase price on presentation of a proof of purchase and defective fixture at the offices of manufacturer within three years of original shipment. Liability of manufacturer is limited to the foregoing, and manufacturer shall not be liable for any other damages, direct or indirect, sustained or suffered by purchaser or any person. This warranty is supplied to the buyer in place of all other warranties, expressed or implied. Seller does not warrant as to merchantability or fitness for a particular use, nor will any oral statement constitute a warranty or amend this specific warranty. Abnormal use, abuse of the fixture, improper installation, or repair, or modification of the fixture without prior written authorization from the manufacturer will render the warranty void.