

CATALOG #	TYPE	
JOB NAME	WATTAGE	VOLTAGE

6" 1 Triple 42 WATT MAXIMUM

FRR-06014

Type C Dual Reflector with Multiple Trims

# THIS PRODUCT IS NO LONGER AVAILABLE

## Features

### Lamp

- Designed for one 4-pin triple tube amalgam or quad compact fluorescent lamp: 42/32/26W triple or 26W quad.
- Socket bracket position pre-set for 2W and 4W. For 32 or 26W bracket must be repositioned during installation.

### Ballast: Multi-Wattage/Voltage

- Installed electronic high power factor, thermally protected. For lower wattages: Optimal 49% efficiency.
- 120-277 multi-volt; 50/60 Hz. THD < 1.4%.
- ClickQuick connectors for easy service.
- Cold weather -22°F (-30°C).
- End of lamp life protection circuit and filter.
- Internally fused. Also see Option FS.

### Reflector

- Upper: Specular Alzak® aluminum.
- Lower: Low-ridgesance (L.I.) Alzak aluminum, one piece, self-flange.
- See Options for additional finishes.

### Aluminum Housing: Low Plenum

- Acrylic painted, multipole: exceeds 1000-hour AAMA 6% salt spray test.
- Lightweight: Minimizes ceiling load.
- Cool operation: Extends component life.
- Anti-fog/condensation: 1/8" air space.
- High master grade, 6061 aluminum.
- 7" Trim design: Standard 1/2" or 3/4" trim.

### Outlet Box

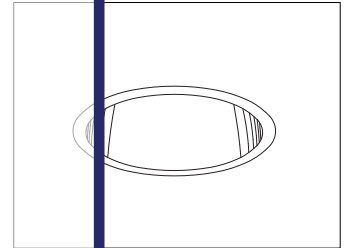
- Prewired 14 GA (NEC) galvanized steel, UL listed. 1/2" and 3/4" knockouts.

### Installation

- 27" galvanized hanger bars with adjustable leveling brackets (2 per unit).
- Access inlay for retrofit applications.
- Locations.

### Options (Consult Listing)

- Wedge and/or d. loc. locs, d. loc. locs.
- Type IC (see code for details).
- Insulation.
- Through-branch conductors (6 #12).
- Through-branch conductors (6 #12).
- Through-branch conductors (6 #12).



Recessed Round  
Open  
Dual Reflector  
Shallow Plenum  
Type IC

### Selected Optional Trims:

- All White Option -30
- Softex Titanium Option -57
- Softex Dune Option -71
- Softex Pewter Option -77
- Softex Wheat Option -91
- Black OptiGroove Option -OG

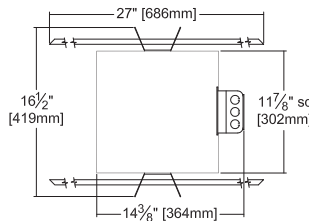
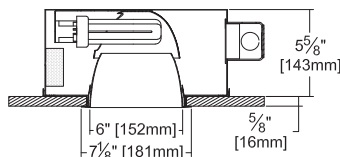
Please consult

# QUOTATIONS

for the best alternative.

## Performance at a Glance

FRR-06014

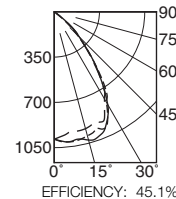


Ceiling Cut-out  
6 1/2" Dia.

### Cone of Light Key

- Ft. Distance from fixture
- FC Footcandles at nadir (0°)
- Dia. Circle of light at 50% of FC
- \* Dia. (in ft.) shown is where FC value is half the FC at nadir.

FRR-06014 (1 Triple 42W)



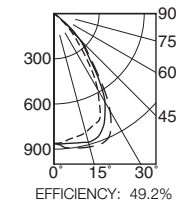
### Cone of Light\*

Dist.	FC	Dia.
6	27.3	7.3
8	15.4	9.7
10	9.8	12.2
12	6.8	14.6
14	5.0	17.0
16	3.8	19.5

--- 0° SC 1.2  
--- 90° SC 1.2  
--- 180° SC 1.2

EFFICIENCY: 45.1%

FRR-06014 (1 Triple 32W)



### Cone of Light\*

Dist.	FC	Dia.
6	23.9	7.0
8	13.5	9.3
10	8.6	11.6
12	6.0	14.0
14	4.4	16.3
16	3.4	18.6

--- 0° SC 1.1  
--- 90° SC 1.2  
--- 180° SC 1.2

EFFICIENCY: 49.2%

# THE KIRLIN COMPANY

3401 EAST JEFFERSON AVENUE • DETROIT, MICHIGAN 48207-4232  
(313) 259-6400 • Fax: (313) 259-9409 OR (313) 259-3121 • www.kirlinlighting.com

RENAISSANCE SERIES  
COMPACT FLUORESCENT LIGHTING

MAXIMUM WATTAGE

1 Triple 42

CATALOG NUMBER

FRR-06014

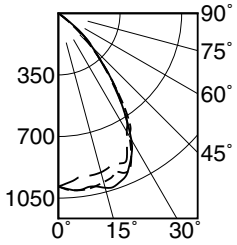
DUE TO OUR CONTINUING EFFORT TO IMPROVE PRODUCTS, TECHNICAL INFORMATION IS SUBJECT TO CHANGE WITHOUT NOTICE.

Alzak® is a registered trademark of ALCOA.

Detailed Photometry - Installed Fixture

Photometry from I.T.L., Boulder, CO

FRR-06014 (1 Triple 42)



----- 0° SC 1.2  
 \_\_\_\_\_ 90° SC 1.2  
 - - - - - 180° SC 1.2

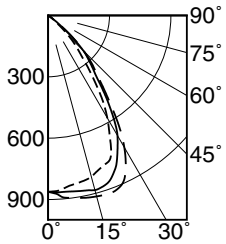
EFFICIENCY : 45.1%

CANDLEPOWER DISTRIBUTION					
	0.0	45.0	90.0	135.0	180.0
0	984	984	984	984	984
5	1009	1014	1009	977	955
15	993	1031	1026	957	935
25	967	980	954	918	917
35	658	701	623	600	622
45	251	262	274	246	279
55	8	20	18	18	20
65	0	0	0	0	0
75	0	0	0	0	0
85	0	0	0	0	0
90	0	0	0	0	0

COEFFICIENTS OF UTILIZATION							
RF	20						
	80			50			
RC	70	50	30	10	50	30	10
1	51	50	48	47	47	46	45
2	48	46	44	42	43	42	41
3	45	42	40	38	40	38	37
4	43	39	36	34	37	35	33
5	40	36	33	31	35	32	30
6	38	33	30	28	32	30	28
7	36	31	28	26	30	27	26
8	34	29	26	24	28	25	24
9	32	27	24	22	26	24	22
10	30	25	22	20	24	22	20

ITL TEST #48485 \*LER=30.7 •AEC=\$7.82

FRR-06014 (1 Triple 32)



----- 0° SC 1.1  
 \_\_\_\_\_ 90° SC 1.2  
 - - - - - 180° SC 1.2

EFFICIENCY : 49.2%

CANDLEPOWER DISTRIBUTION					
	0.0	45.0	90.0	135.0	180.0
0	862	862	862	862	862
5	850	863	866	885	894
15	816	833	884	910	916
25	729	754	793	853	882
35	403	443	502	508	536
45	147	193	244	215	248
55	22	23	22	18	18
65	2	3	2	2	2
75	0	0	0	0	0
85	0	0	0	0	0
90	0	0	0	0	0

COEFFICIENTS OF UTILIZATION							
RF	20						
	80			50			
RC	70	50	30	10	50	30	10
1	56	54	53	52	51	50	49
2	53	50	48	46	47	46	44
3	50	46	43	41	44	42	40
4	47	43	40	37	41	39	37
5	44	39	36	34	38	35	33
6	41	37	33	31	35	33	31
7	39	34	31	28	33	30	28
8	37	32	28	26	31	28	26
9	35	30	26	24	29	26	24
10	33	28	25	23	27	24	22

ITL TEST #54828 \*LER=31.4 •AEC=\$7.63

Options

Ballast, Wattage and Voltage

- 39 Installed dimming ballast. Not Type IC listed. Indoor use. 10°C (50°F) minimum start. Specify wattage, voltage and brand.
- 43 Lower wattage: for either 4-pin electronic 18W triple/quad or 13W quad (only). Specify wattage.
- 97 Specify other voltage. Consult factory.
- 98 347 volt, 50/60 Hz. input. Consult factory.

Emergency Ballast - Specify Voltage<sup>1</sup>

- Internal (factory installed) ballast, test switch and indicator light. Suitable for damp locations from 0° to 50°C (32° to 122°F) or with Cold Weather version (see -CE) -20° to 55°C (-4° to 131°F).
- 73 Internal 1-lamp EM ballast. Specify voltage.
- CE Internal cold weather (-20° to 55°C) 1-lamp EM ballast. Specify voltage.

- HE<sup>1</sup> Internal higher lumen (up to 1250) 1-lamp EM ballast. 13-42W only. Specify voltage.

Trims

- 30 All white lower cone. (CP x .95)
- 31 White acrylic enameled lower cone flange.
- 32 White oversize trim ring. Specify O.D.
- 45 Gasket between ceiling and cone flange.
- 57 SofTex Titanium lower cone. (CP x .80)
- 70 SofTex Clear lower cone. (CP x .92)
- 71 SofTex Dune lower cone. (CP x .88)
- 77 SofTex Pewter lower cone. (CP x .85)
- 79 Extension collar for ceilings up to 2" thick.
- 90 SofTex Champagne Gold lower cone. (CP x .91)
- 91 SofTex Wheat lower cone. (CP x .87)
- 94 Custom color/finish. Specify. Consult factory.
- OG OptiGroove black seamless tapered aluminum cone with white flange. (CP x .70)

ShatterGuard™ Shield (Beneath Lamp)

- 17 .187" prismatic high strength acrylic.
- SG .125" clear polycarbonate.

Other

- 99 Special modification. Consult factory.
- AT Air tight with Type IC. Meets / exceeds ASTM E283 restricted airflow of 2 CFM maximum.
- FS Additional in-line fuse. Not available with Option -98 (347V).
- LE With 4-pin electronic lamp. 3500°K standard. 82 CRI and 12,000 hour life. Specify wattage, style and color temperature.

<sup>1</sup> Visit [www.kirlinlighting.com](http://www.kirlinlighting.com) for most current performance / specifications.

SUBMITTAL DATA

JOB NAME  
 TYPE  
 WATTAGE  
 CATALOG NUMBER

VOLTAGE

APPROVAL STAMP

LIMITED WARRANTY: CATALOGED KIRLIN FIXTURES ARE WARRANTED FREE OF DEFECTS IN WORKMANSHIP OR MATERIAL FOR THREE YEARS FROM DATE OF PURCHASE. INSTALLATION, E.G., INNOVATIVE USE, MANUFACTURER AT THE OPTION WILL REPLACE OR REPAIR SUCH KIRLIN OR RELATED PURCHASE OR PRESENTATION OF PROOF OF PURCHASE AND DEFECTIVE FIXTURE AS THE OFFICE OF MANUFACTURER WITHIN THREE YEARS OF ORIGINAL INSTALLATION. LIABILITY OF MANUFACTURER IS LIMITED TO THE REPAIR, AND MANUFACTURER SHALL NOT BE LIABLE FOR ANY OTHER DAMAGES, INEED OR INDEED, SUSTAINED OR SUFFERED BY PURCHASER OR ANY PERSON. THIS WARRANTY IS APPLIED TO THE BUYER IN PLACE OF ALL OTHER WARRANTIES, EXPRESSED OR IMPLIED. SELLER DOES NOT WARRANT AS TO MERCHANTABILITY OR FITNESS FOR A PARTICULAR USE, NOR WILL ANY ORAL STATEMENT CONSTITUTE A WARRANTY OR ALTER THIS SPECIFIC WARRANTY. ABNORMAL USE, ABUSE OF THE FIXTURE, IMPROPER INSTALLATION, OR REPAIR, OR MODIFICATION OF THE FIXTURE WITHOUT PRIOR WRITTEN AUTHORIZATION FROM THE MANUFACTURER WILL RENDER THE WARRANTY VOID.

\* LER = Luminaire Efficiency Rating  
 LER = Luminaire Effic. x Total Lamp Lumens x Ballast Factor  
 Input Watts

\* AEC = Annual Energy Cost per 1000 lumens  
 (based on 3000 hours use @ \$0.08 KWH).