

CATALOG #	TYPE
JOB NAME	WATTAGE VOLTAGE

6" 1 Triple 32 WATT MAXIMUM

FRR-06013

Type C Dual Reflector with
Multiple Trims

Features

Lamp

- Designed for one 4-pin triple tube amalgam compact fluorescent lamp: 32/26W triple.

Ballast: Multi Wattage/Voltage

- Installed electronic high power factor ballast protected. For lower wattages: Option -57.
- 120-277 multi-volt; 50/60 Hz. THD < 10%.
- ClickQuick connectors for easy service.
- Cold weather -22°F (-30°C).
- End of lamp life protection circuit. RFI filter.
- Internally fused. Also see Option -FS.

Reflector

- Upper: Specular Alzak® aluminum.
- Lower: Low reflectance (L.I.) Alzak aluminum, one piece, self-flanged.
- See Options for other finishes.

Aluminum Housing: Shallow Plenum

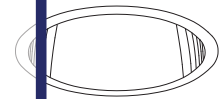
- Acrylic enameled. Rustproof: Exceeds 1000 hour ASTM 5% salt spray test.

**THIS PRODUCT
IS NO LONGER
AVAILABLE**

Please consult

QUOTATIONS

for the best alternative.



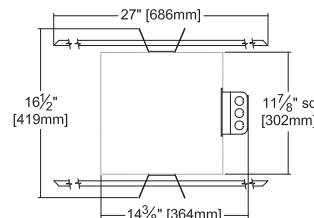
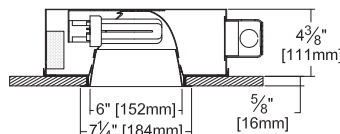
Recessed Round
Open
Dual Reflector
Shallow Plenum
Type IC

Selected Optional Trims:

- All White Option -30
- Softex Titanium Option -57
- Softex Dune Option -71
- Softex Pewter Option -77
- Softex Wheat Option -91
- Black OptiGroove Option -OG

Performance at a Glance

FRR-06013

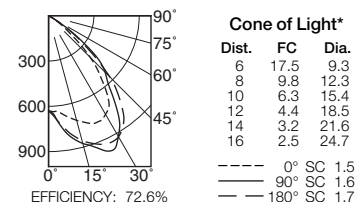


Cone of Light Key

- Ft. Distance from fixture
- FC Footcandles at nadir (0°)
- Dia. Circle of light at 50% of FC
- * Dia. (in ft.) shown is where FC value is half the FC at nadir.

Ceiling Cut-out
6 1/2" Dia.

FRR-06013 (1 Triple 32W)



THE KIRLIN COMPANY

3401 EAST JEFFERSON AVENUE • DETROIT, MICHIGAN 48207-4232
(313) 259-6400 • Fax: (313) 259-9409 OR (313) 259-3121 • www.kirlinlighting.com

RENAISSANCE SERIES COMPACT FLUORESCENT LIGHTING

MAXIMUM WATTAGE

1 Triple 32

CATALOG NUMBER

FRR-06013

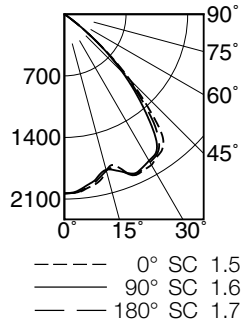
DUE TO OUR CONTINUING EFFORT TO IMPROVE PRODUCTS,
TECHNICAL INFORMATION IS SUBJECT TO CHANGE WITHOUT NOTICE.

Alzak® is a registered trademark of ALCOA.

Detailed Photometry - Installed Fixture

Photometry from I.T.L., Boulder, CO

FRR-06013 (1 Triple 32)



EFFICIENCY : 72.6%

CANDLEPOWER DISTRIBUTION					
	0.0	45.0	90.0	135.0	180.0
0	629	629	629	629	629
5	636	669	703	706	700
15	717	792	876	852	856
25	775	897	986	981	933
35	396	728	807	823	866
45	391	465	529	531	574
55	94	151	187	153	173
65	2	4	3	3	2
75	0	0	0	0	0
85	0	0	0	0	0
90	0	0	0	0	0

COEFFICIENTS OF UTILIZATION							
RF	20						
RC	80				50		
RW	70	50	30	10	50	30	10
1	82	79	77	75	75	73	72
2	76	72	68	65	68	65	63
3	71	65	61	57	62	59	56
4	66	59	54	51	57	53	50
5	62	54	49	45	52	48	44
6	57	49	44	40	48	43	40
7	54	45	40	36	44	39	36
8	50	42	36	33	41	36	32
9	47	38	33	30	37	33	29
10	44	35	30	27	34	30	27

ITL TEST #45412 *LER=42.4 •AEC=\$5.66

* LER = Luminaire Efficiency Rating

$$\text{LER} = \frac{\text{Luminaire Effic.} \times \text{Total Lamp Lumens} \times \text{Ballast Factor}}{\text{Input Watts}}$$

 • AEC = Annual Energy Cost per 1000 lumens
 (based on 3000 hours use @ \$0.08 KWH).

Options

Ballast, Wattage and Voltage

- 39 Installed dimming ballast. Not Type IC listed. Indoor use. 10°C (50°F) minimum start. Specify wattage, voltage and brand.
- 43 Lower wattage: for either 4-pin electronic 18W triple/quad or 13W quad (only). Specify wattage.
- 97 Specify other voltage. Consult factory.
- 98 347 volt, 50/60 Hz. input. Consult factory.

Emergency Ballast - Specify Voltage¹

- Internal (factory installed) ballast, test switch and indicator light. Suitable for damp locations from 0° to 50°C (32° to 122°F) or with Cold Weather version (see -CE) -20° to 55°C (-4° to 131°F).
- 73 Internal 1-lamp EM ballast. Specify voltage.
- CE Internal cold weather (-20° to 55°C) 1-lamp EM ballast. Specify voltage.

- HE¹ Internal higher lumen (up to 1250) 1-lamp EM ballast. 13-42W only. Specify voltage.

Trims

- 30 All white lower cone. (CP x .95)
- 31 White acrylic enameled lower cone flange.
- 32 White oversize trim ring. Specify O.D.
- 45 Gasket between ceiling and cone flange.
- 57 SofTex Titanium lower cone. (CP x .80)
- 70 SofTex Clear lower cone. (CP x .92)
- 71 SofTex Dune lower cone. (CP x .88)
- 77 SofTex Pewter lower cone. (CP x .85)
- 79 Extension collar for ceilings up to 2" thick.
- 90 SofTex Champagne Gold lower cone. (CP x .91)
- 91 SofTex Wheat lower cone. (CP x .87)
- 94 Custom color/finish. Specify. Consult factory.
- OG OptiGroove black seamless tapered aluminum cone with white flange. (CP x .70)

Other

- 99 Special modification. Consult factory.
- FS Additional in-line fuse. Not available with Option -98 (347V).
- LE With 4-pin electronic lamp. 3500°K standard. 82 CRI and 12,000 hour life. Specify wattage, style and color temperature.

¹ Visit www.kirlinlighting.com for most current performance / specifications.

SUBMITTAL DATA

APPROVAL STAMP

JOB NAME

TYPE

WATTAGE

VOLTAGE

CATALOG NUMBER

² See GRR-06013 specification sheet or "Gazelle Express Program" brochure for complete details. Limited option availability.