

CATALOG #	TYPE	
JOB NAME	WATTAGE	VOLTAGE

6" 1 Triple 42 WATT MAXIMUM

FRR-06004

Type C 6" Aperture with
Optional Air Light Design

**THIS PRODUCT
IS NO LONGER
AVAILABLE**

Features

Lamp

- Designed for one 4-pin triple tube amalgam or quad compact fluorescent lamp: 42/32/26W triple or 26W quad.

Ballast: Multi Wattage/Voltage

- Installed electronic high power factor ballast, protected. For lower wattages: Option -43.
- 120-277 multi-volt; 50/60 Hz. THD < 10%.
- ClickQuick connectors for easy service.
- Cold weather -22°F (-30°C).
- End of lamp life protection circuit. RFI filter.
- Internally fused. Also see Option -FS.

Reflector

- Low iridescence (L.I.) Alzak® aluminum, one piece, self-finished.
- See Options for other finishes.

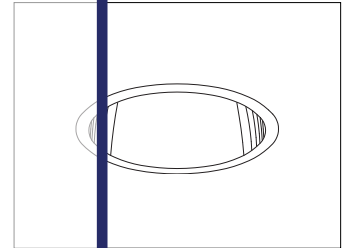
Aluminum Housing

- Acrylic enameled. Rustproof: Exceeds 1000 hour ASTM 5% salt spray test.

- Light weight. Mirrored interior.
- Cooling fins extend from interior.
- Entire luminaire serviced through aperture.
- Built-in plaster frame.
- Aperture design. See Option -AT.
- Mounting box.
- Plow and 14 gauge ETL listed steel. UL listed. 1/2" and 3/4" knockouts.

Installation

- 27" galvanized hanger bars with adjustable mounting brackets (2) supplied.
- Recesses indoor or outdoor in covered locations.
- Wet, damp or dry locations, covered ceilings.
- Type IC. Approved for direct contact with insulation.
- Three Year Limited Warranty.
- Complete standard fixture and ballast.



Recessed Round
Open
Single Reflector
Type IC

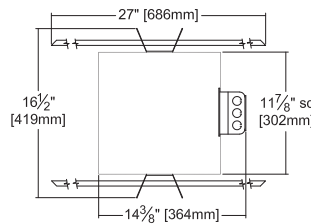
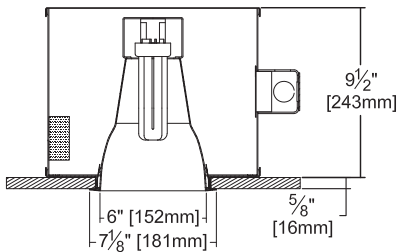
Selected Optional Trims:

- Glow Ring Option -33
- Softex Dune Option -71
- Softex Gold Option -90
- Softex Wheat Option -91
- Wall Wash Option -WW

**Please consult
QUOTATIONS
for the best alternative.**

Performance at a Glance

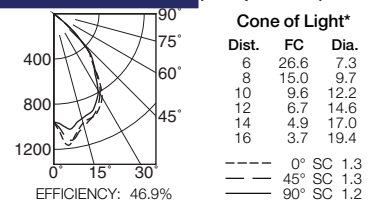
FRR-06004: Type IC



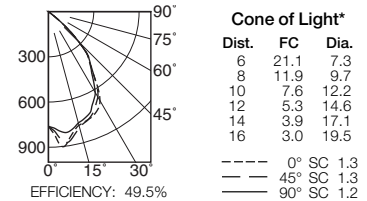
Ceiling Cut-out
6 1/2" Dia.

Cone of Light Key
Ft. Distance from fixture
FC Footcandles at nadir (0°)
Dia. Circle of light at 50% of FC
• Dia. (in ft.) shown is where FC value is half the FC at nadir.

FRR-06004 (1 Triple 42W)



FRR-06004 (1 Triple 32W)



THE KIRLIN COMPANY

3401 EAST JEFFERSON AVENUE • DETROIT, MICHIGAN 48207-4232
(313) 259-6400 • Fax: (313) 259-9409 OR (313) 259-3121 • www.kirlinlighting.com

**RENAISSANCE SERIES
COMPACT FLUORESCENT LIGHTING**

MAXIMUM WATTAGE

1 Triple 42

CATALOG NUMBER

FRR-06004

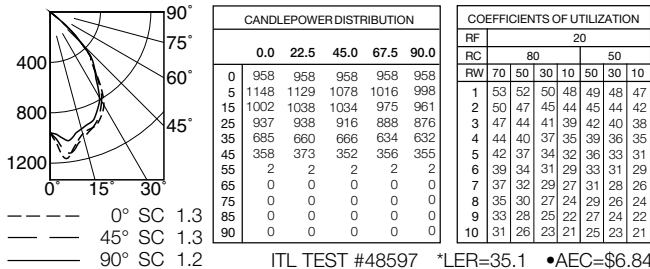
DUE TO OUR CONTINUING EFFORT TO IMPROVE PRODUCTS, TECHNICAL INFORMATION IS SUBJECT TO CHANGE WITHOUT NOTICE.

Alzak® is a registered trademark of ALCOA.

Detailed Photometry - Installed Fixture

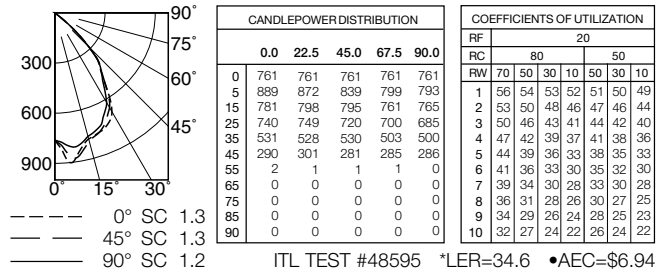
Photometry from I.T.L., Boulder, CO

FRR-06004 (1 Triple 42)



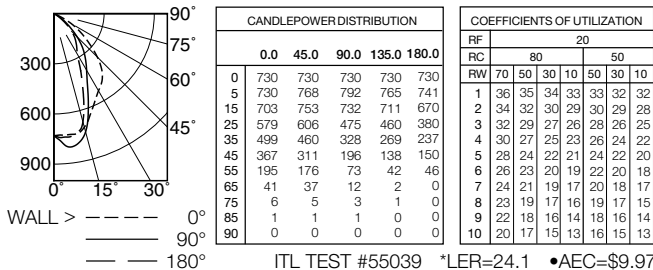
EFFICIENCY : 46.9%

FRR-06004 (1 Triple 32)

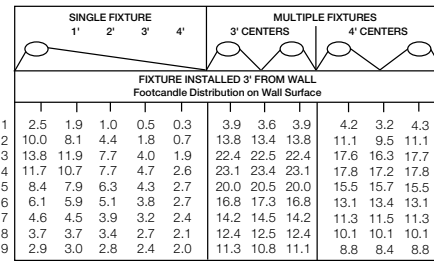


EFFICIENCY : 49.5%

FRR-06004-WW (1 Triple 42)



EFFICIENCY : 32.1%



* LER = Luminaire Efficiency Rating

LER = Luminaire Effic. x Total Lamp Lumens x Ballast Factor / Input Watts

• AEC = Annual Energy Cost per 1000 lumens (based on 3000 hours use @ \$0.08 KWH).

Options

Ballast, Wattage and Voltage

- 39 Installed electronic dimming ballast. Not Type IC listed. Indoor use. 10°C (50°F) minimum start. Specify wattage, voltage and brand.
- 43 Lower wattage: for either 4-pin electronic 18W triple/quad or 13W quad (only). Specify wattage.
- 97 Specify other voltage. Consult factory.
- 98 347 volt, 50/60 Hz. input. Consult factory.

Emergency Ballast - Specify Voltage¹

- Internal (factory installed) ballast, test switch and indicator light. Suitable for damp locations from 0° to 50°C (32° to 122°F) or with Cold Weather version (see -CE) -20° to 55°C (-4° to 131°F).
- 73 Internal 1-lamp EM ballast. Specify voltage.

- CE Internal cold weather (-20° to 55°C) 1-lamp EM ballast. Specify voltage.
- HE¹ Internal higher lumen (up to 1250) 1-lamp EM ballast. 13-42W only. Specify voltage.
- Trims**
- 31 White acrylic enameled reflector flange.
- 32 White oversize trim ring. Specify O.D.
- 33 Decorative Glow Ring suspended beneath trim assembly.
- 45 Gasket between ceiling and reflector flange.
- 70 SofTex Clear reflector. (CP x .89)
- 71 SofTex Dune reflector. (CP x .85)
- 79 Extension collar for ceilings up to 2" thick.
- 90 SofTex Champagne Gold reflector. (CP x .88)
- 91 SofTex Wheat reflector. (CP x .83)
- 94 Custom color/finish. Specify. Consult factory.

- OG OptiGroove black seamless tapered aluminum reflector with white flange. (CP x .80)
- WW Wall wash version instead.

ShatterGuard™ Shield (Beneath Lamp)

- 17 .187" prismatic high strength acrylic.
- SG .125" clear polycarbonate.

Other

- 99 Special modification. Consult factory.
- AT Air tight with Type IC. Meets / exceeds ASTM E283 restricted airflow of 2 CFM maximum.
- FS Additional in-line fuse. Not available with Option -98 (347V).
- LE With 4-pin electronic lamp. 3500°K standard. 82 CRI and 12,000 hour life. Specify wattage, style and color temperature.

¹ Visit www.kirlinlighting.com for most current performance / specifications.

SUBMITTAL DATA

JOB NAME _____
 TYPE _____
 WATTAGE _____ VOLTAGE _____
 CATALOG NUMBER _____

APPROVAL STAMP

LIMITED WARRANTY: CATALOGED KIRLIN FIXTURES ARE WARRANTED FREE OF DEFECTS IN WORKMANSHIP OR MATERIAL FOR THREE YEARS FROM DATE OF PURCHASE. INSTALLER TO N.E.C. IN NORMAL USE. Manufacturer at his option will replace or repair such fixture or refund the purchase price on presentation of proof of purchase and defective fixture within three years of original shipment. Liability of manufacturer is limited to the foregoing, and manufacturer shall not be liable for any other damages, direct or indirect, sustained or suffered by purchaser or any person. This warranty is expressed by the buyer in place of all other warranties, expressed or implied. Seller does not warrant as to merchantability or fitness for a particular use, nor will any oral statement constitute a warranty or amend this specific warranty. Abuses of the fixture, improper installation, or repair, or modification of the fixture without prior written authorization from the manufacturer will render the warranty void.