

Over Sinks and Mirrors in Restrooms or Cells

THIS PRODUCT IS NO LONGER AVAILABLE



Features

Lamps

- Designed for:
 - CV90828: 2 horizontal twin tube 13 watt.
 - CV90829: 2 horizontal BiAx 18 watt.
- See Option -43 for lower wattage.

Ballast

- Thermally protected, enclosed and potted standard.
- High power factor standard.
- Single-circuit wiring standard. Optional two-circuit wiring. (See Option -80)
- 120 volt standard or see optional voltages.
- Electronic optional for CV90829 only. (See Option -96)

Fuse

- Available as Option -FS (single) or -FD (double).

Reflector

- Full-size formed specular reflector with minimum 94% reflectivity.

- High strength acrylic prismatic, .187" thick, .001" tolerance.
- Protected by non-removable tempered acrylic lens.
- Four flush-mounted center-pin tamper-proof screws.

Housing

- Super-strong 6063-T6 tempered extruded aluminum.
- White polyester enamel finish.
- Recommended for prisons, detention

- areas, psychiatric facilities, parking garages - any area of high vandalism.
- Rustproof: Exceeds 1000 hour ASTM 5% salt spray test.

Installation

- Installs indoor or outdoor on all corners, horizontal (ceiling-wall) or vertical (wall-wall), in covered locations.
- Two access holes (ceiling and wall) are 7/8" diameter with 1/2" diameter mounting holes.
- Secure with 3/8" lag or molly bolts to ceiling and wall structure.
- Tamper-proof tools included, minimum one per ten fixtures.

UL, C-UL (Canada) Listings

- Wet, damp or dry locations, covered ceilings.

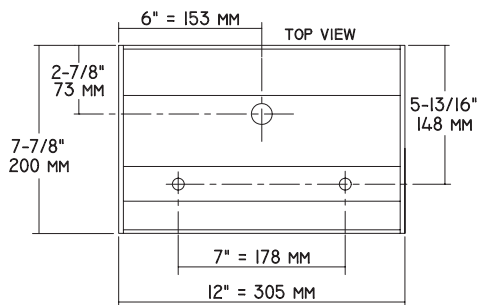
Three Year Limited Warranty

- Complete standard fixture.

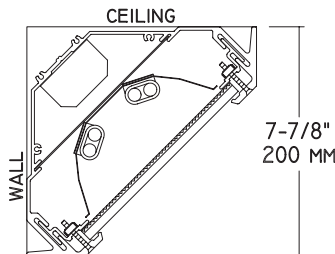
Please consult QUOTATIONS for the best alternative.

Performance at a Glance

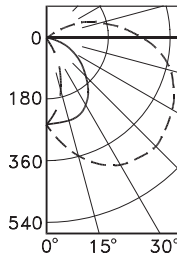
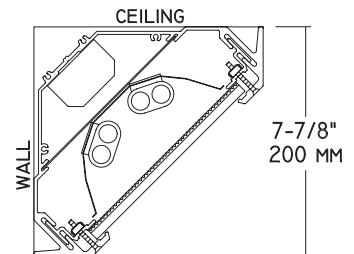
CV90828, CV90829



CV90828

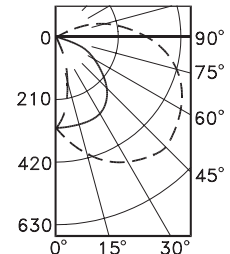


CV90829



CV90828
--- 0° S/MH 2.2
— 90° S/MH 1.3
- - 180° S/MH 0.5

CV90829
--- 0° S/MH 2.2
— 90° S/MH 1.3
- - 180° S/MH 0.5



THE KIRLIN COMPANY

3401 EAST JEFFERSON AVENUE • DETROIT, MICHIGAN 48207-4232
(313) 259-6400 • Fax: (313) 259-9409 OR (313) 259-3121

**CENTURY SERIES
VANDAL RESISTANT
COMPACT FLUORESCENT LIGHTING**

MAXIMUM WATTAGE

**2 Twin 13
2 Biax 18**

CATALOG NUMBERS

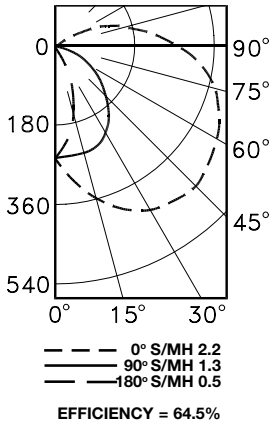
**CV90828
CV90829**

Detailed Photometry - Installed Fixture

FROM I.T.L. (BOULDER, CO) CV90828: TEST NUMBER 40938
CV90829: TEST NUMBER 40941

CV90828

*LER = 26.3
•AEC = \$9.14



CANDLEPOWER DISTRIBUTION

	0.0	45.0	90.0	135.0	180.0
0	264	264	264	264	264
10	334	313	259	201	181
30	423	362	225	81	44
50	446	313	141	3	0
70	404	248	42	0	0
90	273	164	0	0	0
110	116	47	0	0	0
130	8	0	0	0	0
150	0	0	0	0	0
170	0	0	0	0	0
180	0	0	0	0	0

COEFFICIENTS OF UTILIZATION

RF	20						
	80			50			
RC	70	50	30	10	50	30	10
RW	70	50	30	10	50	30	10
1	66	62	58	55	55	53	50
2	59	53	47	43	47	43	40
3	53	46	40	35	41	36	32
4	49	40	34	29	36	31	27
5	45	35	29	25	32	27	23
6	41	32	26	21	29	24	20
7	38	29	23	19	26	21	18
8	35	26	20	16	24	19	16
9	33	24	18	15	22	17	14
10	31	22	17	13	20	16	13

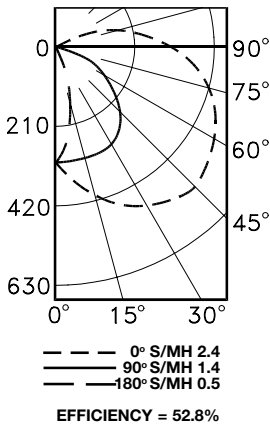
* LER = Luminaire Efficacy Rating

LER = Luminaire Effic. x Total Lamp Lumens x Ballast Factor
Input Watts

• AEC = Annual Energy Cost per 1000 lumens (based on 3000 hours use @ \$0.08 KWH).

CV90829

*LER = 27.3
•AEC = \$8.80



CANDLEPOWER DISTRIBUTION

	0.0	45.0	90.0	135.0	180.0
0	281	281	281	281	281
10	372	346	282	220	193
30	516	445	263	105	51
50	554	422	186	9	0
70	468	340	79	0	0
90	302	225	0	0	0
110	134	77	0	0	0
130	12	0	0	0	0
150	0	0	0	0	0
170	0	0	0	0	0
180	0	0	0	0	0

COEFFICIENTS OF UTILIZATION

RF	20						
	80			50			
RC	70	50	30	10	50	30	10
RW	70	50	30	10	50	30	10
1	54	51	48	45	45	43	41
2	48	43	39	35	39	35	32
3	44	37	32	28	33	30	26
4	40	33	27	24	29	25	22
5	36	29	24	20	26	22	19
6	33	26	21	17	23	19	16
7	31	23	18	15	21	17	14
8	29	21	16	13	19	15	13
9	27	19	15	12	18	14	11
10	25	18	13	11	16	13	10

Options

- 13 Clear 1/4" flat polycarbonate below .187" high strength acrylic. For other polycarbonate thickness up to .375" consult factory.
- 43 Lower Wattage: Specify 2TT9 (CV90828 only).
- 58 277 volt 60 Hz. ballast instead.
- 75 Remote emergency "Ni-Cad" battery pack. For indoor use with 4' maximum mounting distance from luminaire. 4' conduit provided.
- 84 Fixture wired for two circuits. See Options -FD and -RD.
- 94 Custom color housing. Consult factory.
- 96 Regulating electronic high power factor single circuit ballast instead. 2 Biax 18 for CV90829 only.
- 97 Other voltage ballast. Consult factory.
- 98 347 volt 60 Hz. ballast instead. Consult factory for dimming.
- 99 Special modification. Consult factory.
- FS Fused primary. One per fixture. Replaceable. Aids servicing.
- FD Double Fused primary. One per ballast. Replaceable. For use with Option-84.
- LP With lamps. 3000°K or consult factory. Specify wattage and color temperature.
- RF Radio interference filter. One per fixture. Eliminates line feedback.
- RD Double radio interference filter. For use with Option -84.

SUBMITTAL DATA

JOB NAME _____

TYPE _____

WATTAGE _____ VOLTAGE _____

CATALOG NUMBER _____

APPROVAL STAMP

LIMITED WARRANTY: CATALOGUED KIRLIN FIXTURES ARE WARRANTED FREE OF DEFECTS IN WORKMANSHIP OR MATERIAL FOR THREE YEARS FROM DATE OF PURCHASE. INSTALLATION, IN-NORMAL USE, MANUFACTURER AT HIS OPTION WILL REPLACE OR REPAIR SUCH FIXTURE OR REFINISH THE PURCHASE PRICE OR PRESENTATION OF PROOF OF PURCHASE AND DEFECTIVE FIXTURE AT THE OFFICE OF MANUFACTURER WITHIN THREE YEARS OF ORIGINAL SHIPMENT. LIABILITY OF MANUFACTURER IS LIMITED TO THE FOREGOING, AND MANUFACTURER SHALL NOT BE LIABLE FOR ANY OTHER DAMAGES, DIRECT OR INDIRECT, SUSTAINED OR SUFFERED BY PURCHASER OR ANY PERSON. THIS WARRANTY IS SUPPLIED FOR THE BUYER'S PLACE OF INSTALLATION AND IS EXPRESSLY IMPLIED. SELLER DOES NOT WARRANT AS TO MERCHANTABILITY OR FITNESS FOR A PARTICULAR USE, NOR WILL ANY STATEMENT CONSTITUTE A WARRANTY OR AMEND THIS SPECIFIC WARRANTY. ABNORMAL USE, ABUSE OF THE FIXTURE, IMPROPER INSTALLATION, OR REPAIR, OR MODIFICATION OF THE FIXTURE WITHOUT PRIOR WRITTEN AUTHORIZATION FROM THE MANUFACTURER WILL VOID THE WARRANTY VOID.