

INFRARED REMOTE CONTROLLED ADJUSTABLE LIGHTING SYSTEM RECESSED ROUND: 150 WATT 24 VOLT TUNGSTEN HALOGEN

The Kirlin Company introduces the first infrared remote controlled low voltage fully adjustable recessed lighting system designed for:

ICU / NICU / CCU • ER • Patient Exam Rooms • Cath Lab

The healthcare practitioner may now adjust both the direction and intensity of inconspicuous lighting for LDRP child birth or other bedside procedures from either a remote control or wall plate control.

The lighting system provides unprecedented accuracy, convenience, and safety

The **four-part** low voltage system features:

- **One "Twisty" remote control** for simple hand held adjustment of both lights and adjustment of their position and brightness from any where in patient's room. No more deterring keeper reminds user to store remote control on wall plate.
- **One flush mounted wall control** for single hand held adjustment of both lights and adjustment of their position and brightness from a fixed wall location. Includes storage area for remote control on face of plate. May also be integrated into most headwalls.
- **Two recessed luminaires** with:
 - Sleek white recessed trim with 12" aperture.
 - 150 watt, 24 volt tungsten halogen lamp.
 - Full 360° movement with 70° adjustment; 35° either side of nadir.
 - Built-in RFI filter.
 - Plug-in electronic components for simplified servicing.
 - Lightweight construction for easy installation.
 - Complete service kit included in the system.

**THIS PRODUCT
IS NO LONGER
AVAILABLE**
Please see
INFRARED PRO
for the latest technology.

UL, C-UL (Canada) Listed. Exclusive three year warranty. Designed and produced in U.S.A.

Options: The following Options are available for the Kirlin lighting system 71202. Add Option number as suffix to catalog number. Example: 71202-32-94-BL.

- | | |
|--|---|
| -10 Tinted lens in trim. Raises color temperature; reduces CRI and lumen output. | -94 Custom color base fluorescent flange trim instead. Consult factory. |
| -32 Trim extender. Broadens trim flange to cover larger ceiling opening. | -99 Special modification. Consult factory. |
| -87 Low voltage cable length greater than 35 feet. Consult factory. | -BL Beeper (remote control) inactivated by factory. |
| | -LX Extra set of 2 lamps for 71202 system. |
| | -RC Extra remote control. |

Lighting Innovators Since 1895

Our Tradition is Quality

THE KIRLIN COMPANY

Medical Lighting Division

3401 EAST JEFFERSON AVENUE • DETROIT, MICHIGAN 48207-4232
(313) 259-6400 • FAX: (313) 259-9409 OR (313) 259-3121 • www.light-link.com/kirlin

NATIONWIDE NETWORK OF MANUFACTURER'S REPRESENTATIVES TO SERVE YOU
NATIONAL and INTERNATIONAL DISTRIBUTION

EXPERTISE IN ENERGY EFFICIENT, ARCHITECTURAL, COMMERCIAL, INSTITUTIONAL and CUSTOM LIGHTING
COMPACT FLUORESCENT • METAL HALIDE • HPS • MERCURY • FLUORESCENT • TUNGSTEN HALOGEN • INCANDESCENT

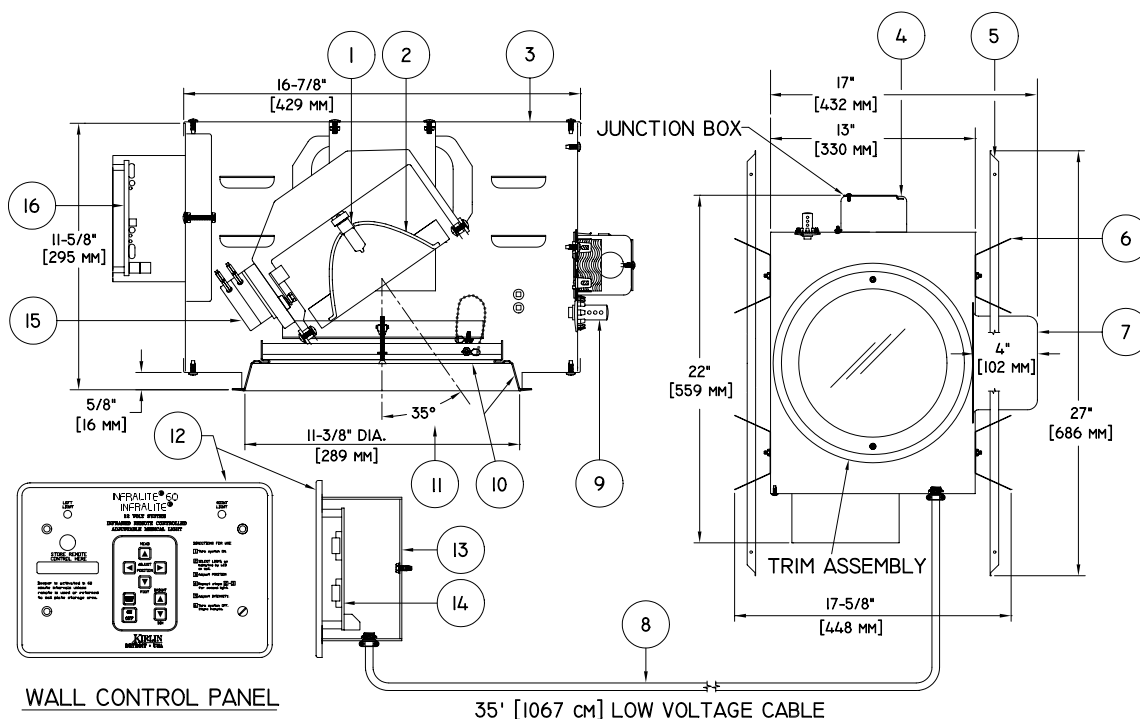
DUE TO OUR CONTINUING EFFORT TO IMPROVE PRODUCTS, TECHNICAL INFORMATION IS SUBJECT TO CHANGE WITHOUT NOTICE

INFRA-LITE® is a registered trademark of The Kirlin Company

PATENT PROTECTED

INFRARED REMOTE CONTROLLED ADJUSTABLE LIGHTING SYSTEM

SECTION and PLAN VIEWS - RECESSED LUMINAIRE WITH WALL CONTROL CENTER



Data Shown per Luminaire:

Lamp and Socket (1)

- 150 watt 24 volt 100 CRI bi-pin tungsten halogen lamp (included).
- Long lamp life.
- Porcelain socket with silicone leads.

Reflector (2)

- Cold mirrored glass reflector - removes heat from light beam.

Housing (3)

- Black acrylic enameled aluminum.
- Cool: Dissipates heat across entire surface area.
- Rustproof: Exceeds 1000 hour ASTM 5% salt spray test.
- Entire luminaire serviced through removable trim assembly.
- Built-in plaster frame.

Junction Box (luminaire) (4)

- Prewired 14 GA (NEC) galvanized steel, UL listed. Contains fuse and holder.
- Removable insulated cover.
- 1/2" and 3/4" knockouts.

Installation (5) (6)

- Two 27" (69cm) galvanized channel bar hangers supplied. (5)
- Four Kirlin fully adjustable universal mounting brackets supplied. (6)
- Lightweight 35 pound fixture recesses in all ceilings including suspended ceilings.
- May be installed (per NEC, mandatory) by any qualified electrician. Factory representative need not be present.

Transformer (7)

- WhisperPack™ fully encapsulated 120 to 24 volt step-down Class H isolation transformer. Fused (in J-box).
- Cool, quiet, long life. Silicone leads.
- Visible and easily serviced in all ceilings, including dry wall.

Low Voltage Cable (8)

- Each luminaire provided with 35' low voltage (12 volt) cable (8) for connection to color coded terminal block(s) (9 conductors) (14) within wall control back box. Optional cable length available - consult factory representative.

Thermal Protection (9)

- Per current NEC.

Trim Assembly (visible at ceiling) (10)

- White regressed self-flanged flare.
- 12" diameter.
- Regressed tempered clear glass lens.

Range of Motion (11)

- Adjustment of 360° and 35° from either side of nadir.
- Maximum 35° deflection is shown.

Wall Control Center (12) (13) (14)

Note: One per lighting system selected

- One wall control panel provided. (12) Includes all tactile-membrane function controls (power, direction, brightness) and electronics. Also contains infrared receiver and magnetic storage strip for the remote control. (Detail on following page.)

- Designed to avoid potential interference from other infrared emitting equipment.
- Less than 1 microamp current leakage from front of wall control panel.
- **UL listed back box provided (13) must be used for proper fit of electronics.** 1/2" and 3/4" trade size knockouts.

Motors (15)

- Two 12 volt permanently lubricated motors control motion. Powerful, yet quiet, operation.
- Plug-in modular electronics designed for easy maintenance.
- Visible and easily serviced through removable trim assembly.

Electronics with Power Supply (16)

- All electronics located in aluminum box (easily accessed and serviced).
- All control wiring supplied by Kirlin is 12 volt maximum.
- RFI filter built into printed circuit board. Prevents line feedback.
- Plug-in modular electronics designed for easy maintenance.

UL, C-UL (Canada) Listings

- Wet, damp or dry locations, covered ceilings.
- Through branch circuit conductors. (6 #12)

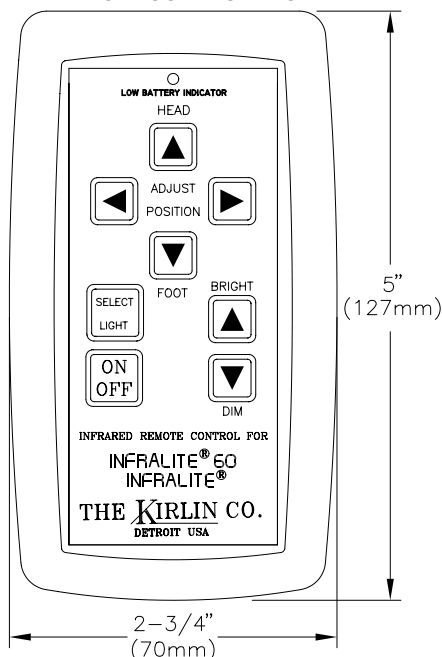
Warranty

- Complete standard fixture and wall control, three years. (Lamp excluded)
- Remote control, one year.

INFRARED REMOTE CONTROLLED ADJUSTABLE LIGHTING SYSTEM

The lighting system includes both a "TV style" remote control and a flush wall control panel. Either may be conveniently used to accurately adjust direction and light intensity of each of the **two luminaires (two light system)**. A designated magnetic strip on the wall control panel has been provided for storage of the remote control when not in use.

REMOTE CONTROL FRONT



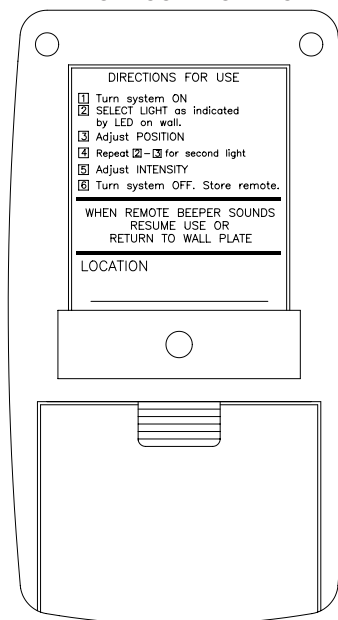
Both the remote and wall controls include:

- Tactile-membrane controls for:
 - Power
 - Fixture selection function
 - Intensity function (dimmer or brighter)
 - Adjust position function for full 360° sweep with 70° total vertical adjustment; 35° from either side of nadir.
- Simple instructions for use.
- Convenient one hand operation.
- Smooth surfaces for easy cleaning.

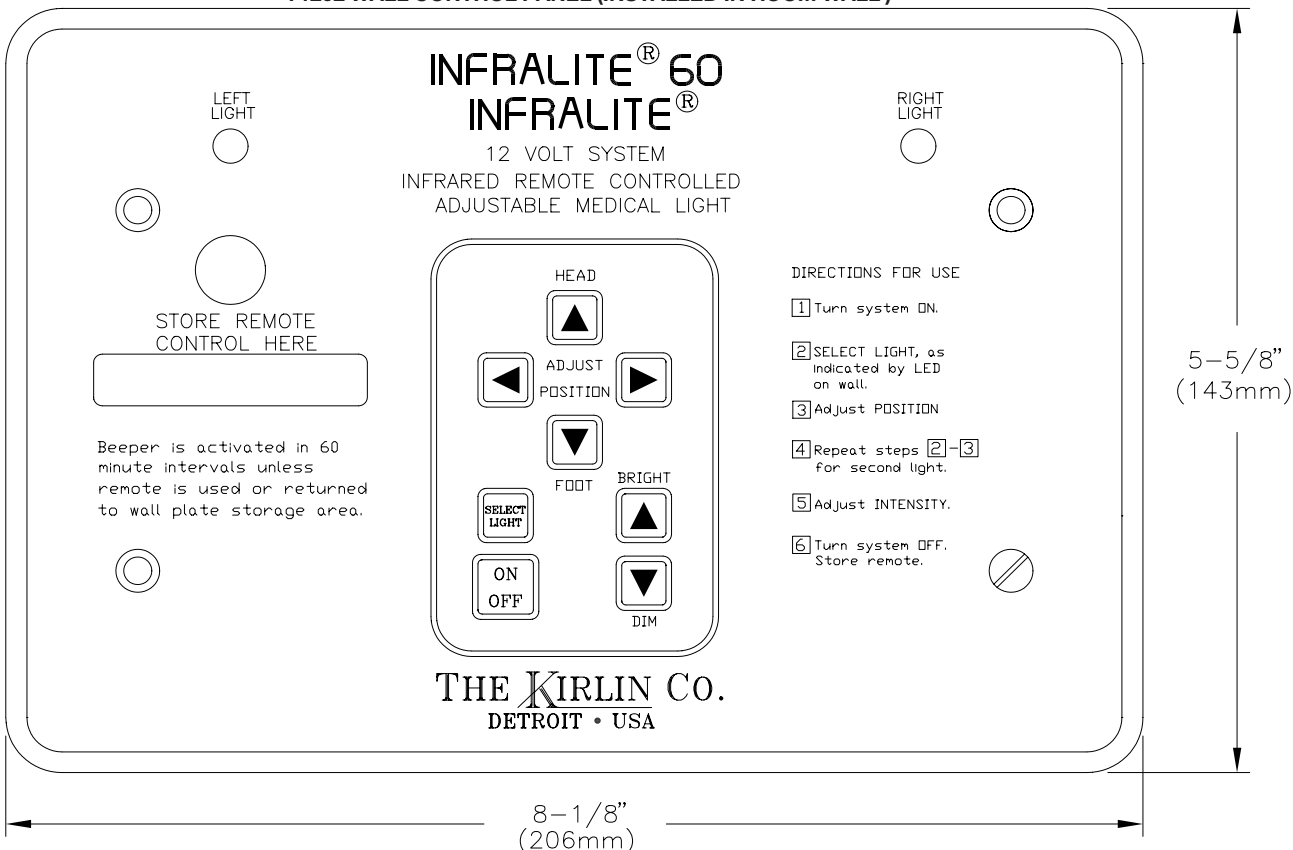
REMOTE CONTROL:

- Includes unique feature of loss-detering timed circuit beeper to remind user to return the remote to storage area on wall control panel. Beeper is activated in 1 hour intervals if the remote control is not in use or not returned to magnetic storage strip on wall control panel.
- Designed to avoid potential interference from other infrared emitting equipment.
- 9 volt standard battery provided.
- Back side has special "write-on" area for marking room location (by healthcare personnel).
- Low stand-by current assures long battery life.

REMOTE CONTROL BACK



71202 WALL CONTROL PANEL (INSTALLED IN ROOM WALL)



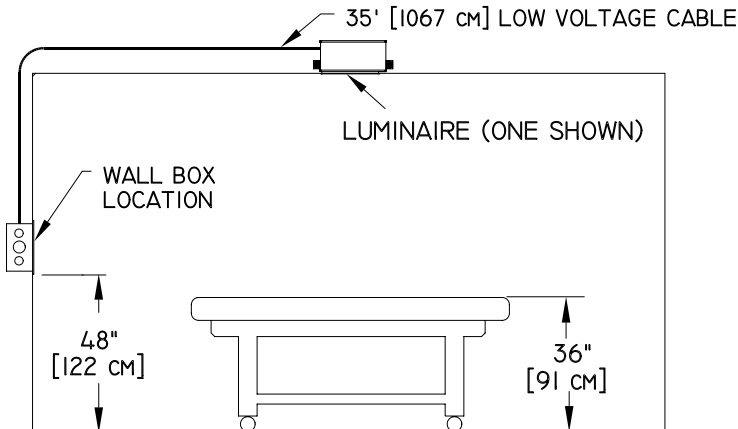
WALL CONTROL FEATURES:

- Includes infrared receiver.
- "Right" and "Left" fixture indicator lights.

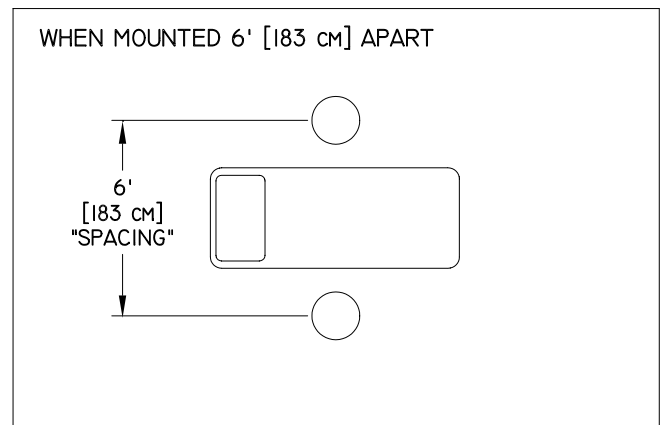
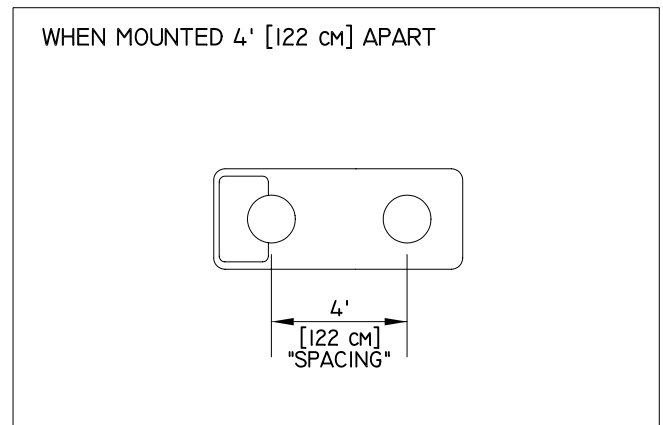
- Permanent rare earth magnet for remote control storage.
- Less than 1 microamp current leakage from front of wall control panel.
- Back box provided by Kirlin.

APPLICATIONS

Typical Side View



Typical Top Views



71202 Footcandle Performance

	7.5' CEILING HEIGHT	8.0' CEILING HEIGHT	9.0' CEILING HEIGHT
71202 4' SPACING	11983 fc	10198 fc	7550 fc
71202 6' SPACING	9047 fc	8019 fc	6320 fc

Footcandle performance calculations are based on lamp manufacturers' published initial lumen ratings. Individual lamps may vary significantly, particularly with age.

THE KIRLIN Co.

3401 EAST JEFFERSON AVENUE • DETROIT, MICHIGAN 48207-4232
(313) 259-6400 • FAX: (313) 259-9409 or (313) 259-3121 • www.light-link.com/kirlin

DUE TO OUR CONTINUING EFFORT TO IMPROVE PRODUCTS, TECHNICAL INFORMATION IS SUBJECT TO CHANGE WITHOUT NOTICE

PATENT PROTECTED

MEDICAL
MARCH 1999