

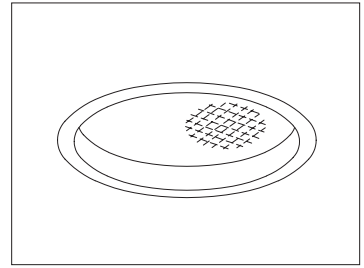
CATALOG #	TYPE	
JOB NAME	WATTAGE	VOLTAGE

11" INDUCTION 85 WATT MAXIMUM

ZRR-11082

## Regressed Lens Induction Downlight

5000°K\*, 80+ CRI, 100,000 Hour Life



### Features

#### Bulb (Included)

- One vertical induction bulb: 85W (maximum).
- See Option -43 for lower wattage: 55W.
- High efficiency with low operating costs.
- Electrode-less induction bulb with power coupler. Extra long 100,000 hour system life.
- Flicker-free instant-on, high light output, excellent color rendering (>80 CRI). Constant color.
- Indoor or outdoor use. -30°F rated.
- 5000°K standard. For 3000° or 4000°K bulb instead, see Options -LT or -LW.
- Resistant to voltage fluctuation and vibration.

#### Ballast

- Electronic high frequency ballast.
- 120 volt standard. For 277V, add Option -58.
- For 347 volt, add Option -98.
- For other input voltages, see Option -97.

#### Reflector

- Specular Alzak® aluminum.

#### Trim Assembly

- Smooth white seamless tapered aluminum self-flanged trim.
- Regressed tempered prismatic C#73 lens.

- Tension springs retain snug fit to housing.
- Black OptiGroove trim available. See Option -OG..
- Optional lenses, trims and vandal resistant versions available.

#### Aluminum Housing

- Acrylic enameled. Rustproof: Exceeds 1000 hour ASTM 5% salt spray test.
- Lightweight: Minimizes ceiling load.
- Cool operation: Extends component life.
- Entire luminaire serviced through aperture.
- Built-in plaster frame.

#### Outlet Box

- Prewired 14 GA (NEC) galvanized steel, UL listed 1/2" and 3/4" knockouts.

#### Installation

- 27" galvanized hanger bars with adjustable mounting brackets (2) supplied.
- Recesses indoor or outdoor in covered locations.

#### UL, C-UL (Canada) Listings

- Wet, damp or dry locations, covered ceilings.
- Through-branch conductors (6#12).

#### Three Year Limited Warranty

- Complete standard fixture and ballast.

#### Thermal Protection (Per Current NEC)

- Thermal protector included.

Recessed Round  
Regressed Lens  
Induction

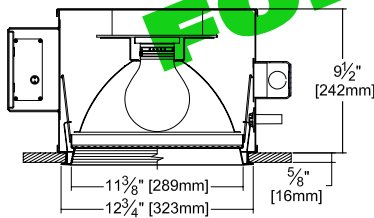
THIS FIXTURE IS NO LONGER AVAILABLE FOR REPLACEMENT



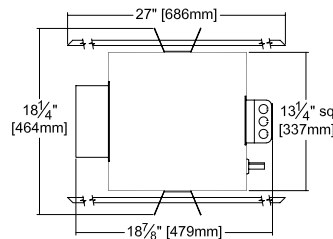
Exceptional  
Energy  
Efficiency

### Performance at a Glance

ZRR-11082

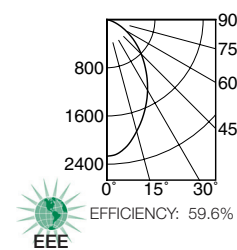


Option -OG Also Shown



Ceiling Cut-out  
12 1/4" Dia.

ZRR-11082 (85W)



#### Cone of Light\*

Dist.	FC	Dia.
6	63.0	5.7
8	35.4	7.6
10	22.7	9.5
12	15.8	11.4
14	11.6	13.2
16	8.9	15.1

SC 0.9

#### Cone of Light Key

Ft. Distance from fixture  
FC Footcandles (average)  
Dia. Circle of light at 50% of FC

\* Dia. (in ft.) shown is where FC value is half the FC at nadir.

\*For 3000°K or 4000°K see Options -LT or -LW.

## THE KIRLIN COMPANY

3401 EAST JEFFERSON AVENUE • DETROIT, MICHIGAN 48207-4232  
(313) 259-6400 • Fax: (313) 259-9409 OR (313) 259-3121 • www.kirlinlighting.com

RENAISSANCE SERIES  
COMPACT FLUORESCENT LIGHTING

MAXIMUM WATTAGE

85

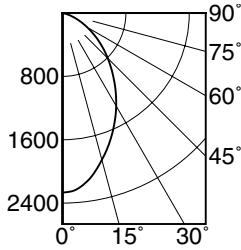
CATALOG NUMBER

ZRR-11082

Detailed Photometry - Installed Fixture

Photometry from I.T.L., Boulder, CO

ZRR-11082 (85 Watt Maximum)



SC 0.9



EFFICIENCY : 59.6%

CANDLEPOWER DISTRIBUTION					
	0.0	22.5	45.0	67.5	90.0
0	2268	2268	2268	2268	2268
5	2226	2226	2226	2226	2226
15	1919	1919	1919	1919	1919
25	1547	1547	1547	1547	1547
35	1163	1163	1163	1163	1163
45	809	809	809	809	809
55	499	499	499	499	499
65	242	242	242	242	242
75	67	67	67	67	67
85	0	0	0	0	0
90	0	0	0	0	0

COEFFICIENTS OF UTILIZATION							
RF	20						
	80			50			
RC	70	50	30	10	50	30	10
RW	70	50	30	10	50	30	10
1	66	64	62	60	60	59	58
2	62	58	54	51	54	52	50
3	57	52	48	44	49	46	43
4	53	47	42	39	45	41	38
5	49	42	38	34	41	37	34
6	46	39	34	31	37	33	30
7	43	36	31	28	34	30	27
8	40	33	28	25	32	28	25
9	38	30	26	23	29	26	23
10	35	28	24	21	27	24	21

ITL TEST #50722 LER=44.8 •AEC=\$5.35

BULB WATTS	INITIAL LUMENS	LUMEN FACTOR	SYSTEM EFFICACY
85W	5950	1.00	67 LPW
55W	3575	0.60	62 LPW

\* LEP =  $\frac{\text{Initial Lumens} \times \text{Efficiency Rating}}{\text{Wattage}}$   
 • AEC =  $\frac{\text{Total Lumens} \times \text{Ballast Factor}}{\text{Wattage} \times \text{Hours use @ } \$0.08 \text{ KWH}}$

THIS FIXTURE IS NO LONGER AVAILABLE CONSULT FACTORY FOR REPLACEMENT

Options

**Ballast, Wattage and Voltage**

- 43 Lower wattage: 55W. Specify wattage and voltage.
- 58 277 volt 60 Hz. ballast instead.
- 97 Other input voltage. Consult factory.
- 98 Step-down transformer for 347 volt line input, prewired into fixture.

**Lenses and Trims**

- 13 Protective dual lenses: Tempered prismatic C#73 spread lens above 1/8" flat polycarbonate.
- 17 .187" prismatic high strength acrylic lens.
- 20 White aluminum 1/2" cube egg-crate louver.
- 26 Vandal resistant version; see VRR-12060.
- 32 White oversize trim ring. Specify O.D.
- 45 Gasket between ceiling and trim flange.
- 46 Gasket between trim and lens.
- 94 Custom color/finish. Specify. Consult factory.
- OG OptiGroove, black seamless tapered aluminum with white self-flanged trim.

**Other**

- 79 Extension collar for ceilings up to 2" thick.
- 99 Special modification. Consult factory.
- LT With 4000°K bulb instead of standard 5000°K bulb. (Note: Consult factory for estimated lead time)
- LW With 3000°K bulb instead of standard 5000°K bulb. (Note: Consult factory for estimated lead time)

SUBMITTAL DATA

APPROVAL STAMP

JOB NAME \_\_\_\_\_  
 TYPE \_\_\_\_\_  
 WATTAGE \_\_\_\_\_ VOLTAGE \_\_\_\_\_  
 CATALOG NUMBER \_\_\_\_\_

LIMITED WARRANTY: CATALOGUED KIRLIN FIXTURES ARE WARRANTED FREE OF DEFECTS IN WORKMANSHIP OR MATERIAL FOR THREE YEARS FROM DATE OF PURCHASE. INSTALLLED TO N.E.C. IN NORMAL USE. Manufacturer at the option will replace or repair such fixture or refund the purchase price on presentation of proof of purchase and defective fixture at the offices of manufacturer within three years of original shipment. Liability of manufacturer is limited to the foregoing, and manufacturer shall not be liable for any other damages, direct or indirect, sustained or suffered by purchaser or any person. This warranty is supplied to the Buyer in place of all other warranties, expressed or implied. Seller does not warrant as to merchantability or fitness for a particular use, nor will any oral statement constitute a warranty or amend this specific warranty. Abnormal use, abuse of the fixture, improper installation, or repair or modification of the fixture without prior written authorization from the manufacturer will render the warranty void.