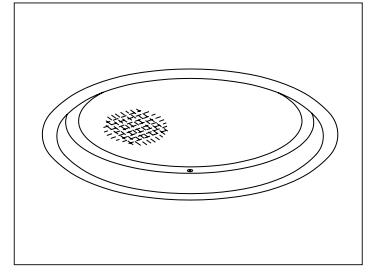


CATALOG #	TYPE	
JOB NAME	WATTAGE	VOLTAGE

12" 2 Triple 42 WATT MAXIMUM

VRR-12018

## Vandal Resistant "IP65 Rated" Sealed & Gasketed with High Lumen Output



### Specifications

#### Lamp

- Designed for two 4-pin triple tube amalgam or quad compact fluorescent lamps: 42/32/26W triple or 26W quad.

#### Ballast: Multi-Wattage/Voltage

- Installed electronic high power factor, thermally protected. For lower wattages: Option -43.
- 120-277 multi-volt; 50-60 Hz. THD <10%.
- ClickQuick connectors for easy service.
- Single circuit wiring or see Option -84.
- Cold weather -22°F (-30°C).
- End of lamp life protection circuit. RFI filter.
- Internally fused. Also see Options -FS, -FD.

#### Reflector

- Specular Alzak® aluminum.

#### Trim / Lens Assembly

- Vandal resistant smooth white seamless tapered aluminum self-flanged flare trim or see Option -OG.
- Flush center pin tamperproof hex screws (2) with captive nuts secure trim to housing.
- 3/16" prismatic high strength acrylic lens

above 1/4" clear polycarbonate. Continuous ring secures lens to trim.

#### 5X Sealed and Gasketed

- (1) Silicone seal between trim and lens seals lens to trim, (2) closed cell gasketing between trim and housing flange seals trim to housing, (3) closed cell gasketing on trim flange seals flange to ceiling (4) closed cell gasketing on bottom pan seals housing to ceiling and (5) neoprene O-rings on stainless steel fasteners seal fasteners to trim.

#### Aluminum Housing

- Acrylic enameled. Rustproof: Exceeds 1000 hour ASTM 5% salt spray test.
- Built-in plaster frame surrounded by closed cell silicone gasketing seals housing to ceiling.
- Lightweight: Minimizes ceiling load.
- Cool operation: Extends component life.
- Entire luminaire serviced through aperture.
- Air Tight design. Meets / exceeds ASTM E283 restricted airflow of 2 CFM maximum.



#### Outlet Box

- Prewired 14 GA (NEC) galvanized steel, UL listed. 1/2" and 3/4" knockouts.

#### Installation

- 27" galvanized hanger bars with adjustable mounting brackets (2) supplied.
- Recesses indoor or outdoor in covered locations.

#### UL, C-UL (Canada) Listings

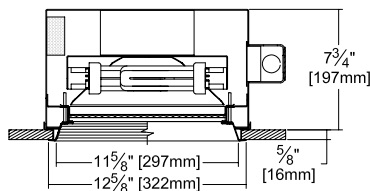
- Wet, damp or dry locations, covered ceilings.
- Through-branch conductors (6 #12 AWG 90°C).

#### Three Year Limited Warranty

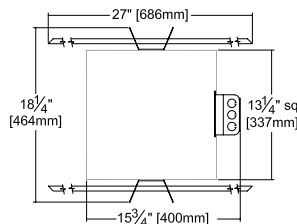
- Complete standard fixture and ballast.

### Performance at a Glance

VRR-12018

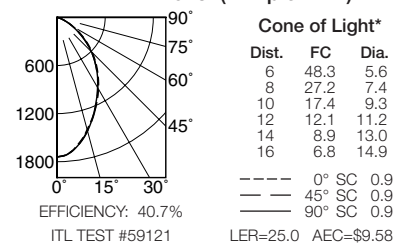


Option -OG Also Shown



Ceiling Cut-out  
12 1/4" Dia.

VRR-12018 (2 Triple 42W)



#### Cone of Light Key

- Ft. Distance from fixture
- FC Footcandles at nadir (0°)
- Dia. Circle of light at 50% of FC

\* Dia. (in ft.) shown is where FC value is half the FC at nadir.

## THE KIRLIN COMPANY

3401 EAST JEFFERSON AVENUE • DETROIT, MICHIGAN 48207-4232  
(313) 259-6400 • Fax: (313) 259-9409 OR (313) 259-3121 • www.kirlinlighting.com

ENERGY EFFICIENT VANDAL RESISTANT  
& MAXIMUM SECURITY LIGHTING

MAXIMUM WATTAGE

2 Triple 42

CATALOG NUMBER

VRR-12018

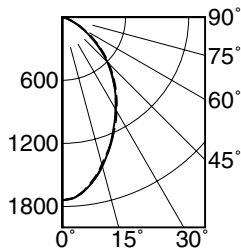
DUE TO OUR CONTINUING EFFORT TO IMPROVE PRODUCTS, TECHNICAL INFORMATION IS SUBJECT TO CHANGE WITHOUT NOTICE.

Alzak® is a registered trademark of ALCOA.

Detailed Photometry - Installed Fixture

Photometry from I.T.L., Boulder, CO

VRR-12018 (2 Triple 42)



--- 0° SC 0.9  
 --- 45° SC 0.9  
 --- 90° SC 0.9

EFFICIENCY : 40.7%

CANDLEPOWER DISTRIBUTION					
	0.0	22.5	45.0	67.5	90.0
0	1740	1740	1740	1740	1740
5	1699	1699	1701	1704	1704
15	1448	1458	1466	1466	1467
25	1171	1173	1166	1160	1154
35	893	884	874	873	876
45	621	614	604	602	603
55	356	352	342	330	329
65	141	141	138	131	129
75	26	27	27	28	29
85	0	0	0	0	0
90	0	0	0	0	0

COEFFICIENTS OF UTILIZATION							
RF	20						
RC	80				50		
RW	70	50	30	10	50	30	10
1	45	44	43	41	41	40	39
2	42	40	37	36	37	36	34
3	39	36	33	31	34	32	30
4	36	32	29	27	31	29	27
5	34	29	26	24	28	26	24
6	32	27	24	22	26	23	21
7	30	25	22	20	24	21	19
8	28	23	20	18	22	20	18
9	26	21	18	16	21	18	16
10	25	20	17	15	19	17	15

ITL TEST #59121 \*LER=25.0 •AEC=\$7.81

\* LER = Luminaire Efficiency Rating

LER =  $\frac{\text{Luminaire Effic.} \times \text{Total Lamp Lumens} \times \text{Ballast Factor}}{\text{Input Watts}}$

• AEC = Annual Energy Cost per 1000 lumens (based on 3000 hours use @ \$0.08 KWH).

Options

**Ballast, Wattage and Voltage**

- 39 Installed electronic dimming ballast. Indoor use. 10°C (50°F) minimum start. Specify wattage, voltage and brand.
- 43 Lower wattage. For 4-pin 18W triple or 18-13W quad. Specify wattage.
- 84 Wired for two circuits. Also see -FD.
- 97 Specify other voltage. Consult factory.
- 98 347 volt, 50/60 Hz. input. Consult factory.

**Emergency Ballast - Specify Voltage<sup>1</sup>**

- Internal (factory installed) ballast, test switch and indicator light. Suitable for damp locations from 0° to 50°C (32° to 122°F) or with Cold Weather version (see -CE) -20° to 55°C (-4° to 131°F).
- 73 Internal 1-lamp EM ballast.
- CE Internal cold weather (-20° to 55°C) 1-lamp EM ballast. Specify voltage.
- HE<sup>1</sup> Internal higher lumen (up to 1250) 1-lamp EM ballast. 13-42W only. Specify voltage.

**Lenses and Trims**

- 94 Custom color/finish. Specify. Consult factory.
- CF High temperature color filter. Specify color.
- OG Black OptiGroove flare trim. (CP x .95)
- UV UV filter. Consult factory.

**Other**

- 99 Special modification. Consult factory.
- FD Two additional in-line fuses. One per ballast. Use with Option -84. Not available with Option -98(347V).
- FS Additional in-line fuse. Not available with Option -98(347V).
- LE With 4-pin electronic lamps. 3500°K standard. 82 CRI and 12,000 hour life. Specify wattage, style and color temperature.

<sup>1</sup> Visit [www.kirlinlighting.com](http://www.kirlinlighting.com) for most current performance / specifications.

SUBMITTAL DATA

APPROVAL STAMP

JOB NAME \_\_\_\_\_  
 TYPE \_\_\_\_\_  
 WATTAGE \_\_\_\_\_ VOLTAGE \_\_\_\_\_  
 CATALOG NUMBER \_\_\_\_\_

LIMITED WARRANTY: CATALOGED KIRLIN FIXTURES ARE WARRANTED FREE OF DEFECTS IN WORKMANSHIP OR MATERIAL FOR THREE YEARS FROM DATE OF PURCHASE. INSTALLER TO N.E.C. IN NORMAL USE. Manufacturer of the option will replace or repair such fixture or refund the purchase price on presentation of proof of purchase and defective fixture at the offices of manufacturer within three years of original shipment. Liability of manufacturer is limited to the foregoing and manufacturer shall not be liable for any other damages, direct or indirect, sustained or suffered by purchaser or any person. This warranty is supplied in place of all other warranties, expressed or implied. Seller does not warrant as to merchantability or fitness for a particular use, nor will any oral statement constitute a warranty or amend this specific warranty. Abnormal use, abuse of the fixture, improper installation, or repair or modification of the fixture without prior written authorization from the manufacturer will render the warranty void.