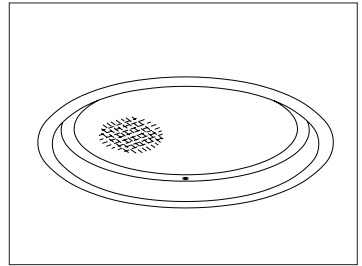


CATALOG #	TYPE
JOB NAME	WATTAGE VOLTAGE

12" 1 PL-H 60 WATT MAXIMUM

VRR-12007

Vandal Resistant 60 Watt PL-H with 20,000 Hour Lamp Life



Specifications

Lamp

- Designed for one 4-pin Philips PL-H triple tube amalgam compact fluorescent lamp: 60 watt PL-H.
- Long 20,000 hour life, 4,000 initial lumens.

Ballast: Multi-Voltage

- Installed electronic high power factor, thermally protected.
- 120-277 multi-volt; 50-60 Hz. THD <10%.
- Cold weather -22°F (-30°C).
- End of lamp life protection circuit. RFI filter.
- Internally fused. Also see Option -FS.

Reflector

- Specular Alzak® aluminum.

Trim / Lens Assembly

- Vandal resistant smooth white seamless tapered aluminum self-flanged flare trim or see -OG.
- Flush center pin tamperproof hex screws and captive nuts secure trim to housing.
- Prismatic tempered C#73 glass lens above 1/4" clear polycarbonate.

- Continuous ring secures lens to trim.
- Tamperproof tool included.

Aluminum Housing

- Acrylic enameled. Rustproof: Exceeds 1000 hour ASTM 5% salt spray test.
- Lightweight: Minimizes ceiling load.
- Cool operation: Extends component life.
- Entire luminaire serviced through aperture.
- Built-in plaster frame.

Outlet Box

- Prewired 14 GA (NEC) galvanized steel, UL listed, 1/2" and 3/4" knockouts.

Installation

- 27" galvanized hanger bars with adjustable mounting brackets (2) supplied.
- Recesses indoor or outdoor in covered locations.

UL, C-UL (Canada) Listings

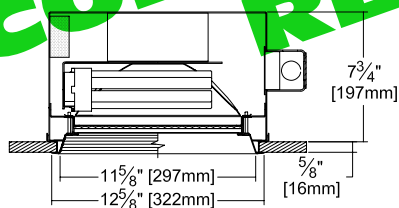
- Wet, damp or dry locations, covered ceilings.
- Through-branch conductors (6 #12 AWG 90°C).

Three Year Limited Warranty

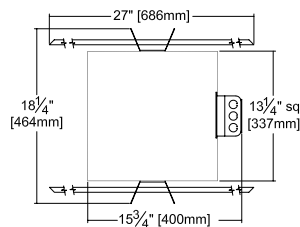
- Complete standard fixture and ballast.

Performance at a Glance

VRR-12007

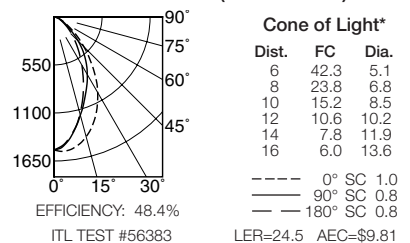


Option -OG Also Shown



Ceiling Cut-out
12 1/4" Dia.

VRR-12007 (1 PL-H 60W)



Cone of Light Key
Ft. Distance from fixture
FC Footcandles at nadir (0°)
Dia. Circle of light at 50% of FC

* Dia. (in ft.) shown is where FC value is half the FC at nadir.

THE KIRLIN COMPANY

3401 EAST JEFFERSON AVENUE • DETROIT, MICHIGAN 48207-4232
(313) 259-6400 • Fax: (313) 259-9409 OR (313) 259-3121 • www.kirlinlighting.com

**ENERGY EFFICIENT VANDAL RESISTANT
& MAXIMUM SECURITY LIGHTING**

MAXIMUM WATTAGE

1 PL-H 60

CATALOG NUMBER

VRR-12007

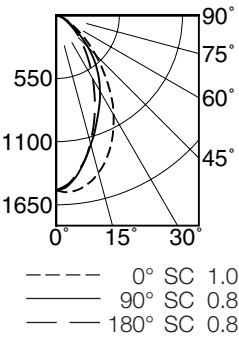
DUE TO OUR CONTINUING EFFORT TO IMPROVE PRODUCTS, TECHNICAL INFORMATION IS SUBJECT TO CHANGE WITHOUT NOTICE.

Alzak® is a registered trademark of ALCOA.

Detailed Photometry - Installed Fixture

Photometry from I.T.L., Boulder, CO

VRR-12007 (1 PL-H 60)



EFFICIENCY : 48.4%

CANDLEPOWER DISTRIBUTION					
	0.0	45.0	90.0	135.0	180.0
0	1524	1524	1524	1524	1524
5	1540	1516	1464	1441	1453
15	1420	1300	1164	1117	1147
25	1162	1032	884	800	794
35	823	770	642	551	503
45	484	473	393	324	295
55	237	239	188	173	156
65	106	107	92	82	79
75	33	35	34	29	27
85	2	4	4	4	4
90	0	0	0	0	0

COEFFICIENTS OF UTILIZATION							
RF	20						
RC	80				50		
RW	70	50	30	10	50	30	10
1	54	52	51	49	49	48	47
2	50	47	45	43	45	43	41
3	47	43	40	37	41	38	36
4	44	39	36	33	37	35	33
5	41	36	32	30	34	31	29
6	38	33	29	27	32	29	26
7	36	30	27	24	29	26	24
8	34	28	25	22	27	24	22
9	32	26	23	21	26	23	20
10	30	25	21	19	24	21	19

ITL TEST #56383 *LER=24.5 •AEC=\$9.81

Luminaire Efficiency Rating Annual Energy Cost per 1000 lumens
LER = Luminaire Effic. x Total Lamp Lumens x 3.6
Input Watts (based on 20 hours use @ \$0.08 KWH).

Options

Ballast, Wattage and Voltage

- 39 Installed electronic dimming ballast. Indoor use. 10°C (50°F) minimum start. Specify wattage, voltage. CONSULT FACTORY FOR AVAILABILITY.
- 97 Specify other voltage. Consult factory.
- 98 347 volt, 50/60 Hz. input. Consult factory.

Emergency Ballast - Specify Voltage¹

Remote (field mounted) ballast, test switch and indicator light. Suitable for damp locations from

- 0° to 50°C (32° to 122°F) or with Cold Weather version (see -CR) -20° to 55°C (-4° to 131°F).
- 75 Remote 1-lamp EM ballast. Specify voltage. Use this option for outdoor emergency applications, where pack is remote mounted indoors in a heated space. Maintain a maximum distance of 7 feet between emergency pack and lamp.

Lenses and Trims

- 32 White oversize trim ring. Specify O.D.
- 45 Gasket between ceiling and trim flange.
- 46 Gasket between trim and lens.

- 94 Custom color/finish. Specify. Consult factory.
- CF High temperature color filter. Specify color.
- OG Black OptiGroove flare trim. (CP x .95)
- UV UV filter. Consult factory.

Other

- 79 Extension collar for ceilings up to 2" thick.
- 99 Special modification. Consult factory.
- FS Additional in-line fuse.
- LE With 4-pin electronic lamp. 3000°K standard or specify 4100°K. 82 CRI and 20,000 hour life. Specify wattage and color temperature.

¹ Visit www.kirlinlighting.com for most current performance / specifications.

SUBMITTAL DATA

APPROVAL STAMP

JOB NAME
TYPE
WATTAGE
VOLTAGE
CATALOG NUMBER

LIMITED WARRANTY: CATALOGED KIRLIN FIXTURES ARE WARRANTED FREE OF DEFECTS IN WORKMANSHIP OR MATERIAL FOR THREE YEARS FROM DATE OF PURCHASE. INSTALL TO N.E.C. IN NORMAL USE. Manufacturer at the option will replace or repair such fixture or refund the purchase price on presentation of proof of purchase and defective fixture at the offices of manufacturer within three years of date of purchase. Liability of manufacturer is limited to the foregoing and manufacturer shall not be liable for any other damages, direct or indirect, sustained or suffered by purchaser or any person. This warranty is supplied in place of all other warranties, expressed or implied. Seller does not warrant as to merchantability or fitness for a particular use, nor will any oral statement constitute a warranty or amend this specific warranty. Abnormal use, abuse of the fixture, improper installation, or repair or modification of the fixture without prior written authorization from the manufacturer will render the warranty void.