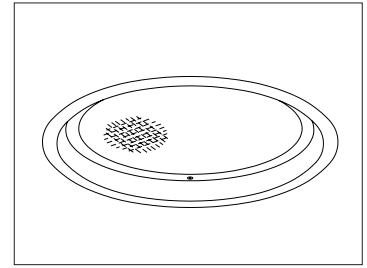


CATALOG #	TYPE	
JOB NAME	WATTAGE	VOLTAGE

12" 1 Triple 70 WATT MAXIMUM

VRR-12006

## Vandal Resistant Large Aperture with High Lumen Output



### Specifications

#### Lamp

- Designed for one 4-pin triple/four tube amalgam compact fluorescent lamp: 70W triple/four tube.

#### Ballast: Multi-Voltage

- Installed electronic high power factor, thermally protected. For lower wattages: Option -43.
- 120-277 multi-volt; 50-60 Hz. THD <10%.
- ClickQuick connectors for easy service.
- Cold weather -22°F (-30°C).
- End of lamp life protection circuit. RFI filter.
- Internally fused. Also see Option -FS.

#### Reflector

- Specular Alzak® aluminum.

#### Trim / Lens Assembly

- Vandal resistant smooth white seamless tapered aluminum self-flanged flare trim or see -OG.
- Flush center pin tamperproof hex screws and captive nuts secure trim to housing.
- Prismatic 3/16" high strength acrylic above 1/4" clear polycarbonate.

- Continuous ring secures lens to trim.
- Tamperproof tool included.

#### Aluminum Housing

- Acrylic enameled. Rustproof: Exceeds 1000 hour ASTM 5% salt spray test.
- Lightweight: Minimizes ceiling load.
- Cool operation: Extends component life.
- Entire luminaire serviced through aperture.
- Built-in plaster frame.

#### Outlet Box

- Prewired 14 GA (NEC) galvanized steel, UL listed. 1/2" and 3/4" knockouts.

#### Installation

- 27" galvanized hanger bars with adjustable mounting brackets (2) supplied.
- Recesses indoor or outdoor in covered locations.

#### UL, C-UL (Canada) Listings

- Wet, damp or dry locations, covered ceilings.
- Through-branch conductors (6 #12 AWG 90°C).

#### Three Year Limited Warranty

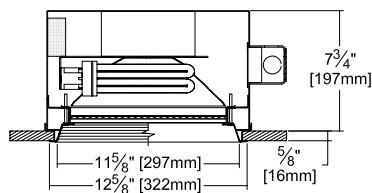
- Complete standard fixture and ballast.



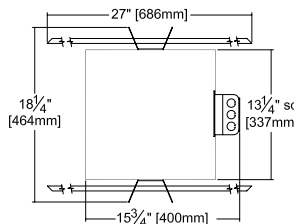
**Exceptional  
Energy  
Efficiency**

### Performance at a Glance

VRR-12006

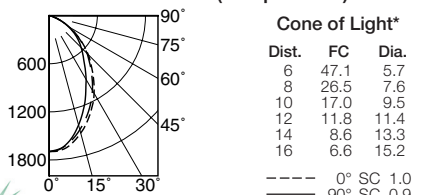


Option -OG Also Shown



Ceiling Cut-out 12 1/4" Dia.

VRR-12006 (1 Triple 70W)



#### Cone of Light\*

Dist.	FC	Dia.
6	47.1	5.7
8	26.5	7.6
10	17.0	9.5
12	11.8	11.4
14	8.6	13.3
16	6.6	15.2

--- 0° SC 1.0

— 90° SC 0.9

- - - 180° SC 1.0

LER=32.0 AEC=\$7.51



EFFICIENCY: 51.7%

ITL TEST #59144

**Cone of Light Key**  
**Ft.** Distance from fixture  
**FC** Footcandles at nadir (0°)  
**Dia.** Circle of light at 50% of FC

\* Dia. (in ft.) shown is where FC value is half the FC at nadir.

## THE KIRLIN COMPANY

3401 EAST JEFFERSON AVENUE • DETROIT, MICHIGAN 48207-4232  
 (313) 259-6400 • Fax: (313) 259-9409 OR (313) 259-3121 • www.kirlinlighting.com

**ENERGY EFFICIENT VANDAL RESISTANT  
& MAXIMUM SECURITY LIGHTING**

MAXIMUM WATTAGE

1 Triple 70

CATALOG NUMBER

VRR-12006

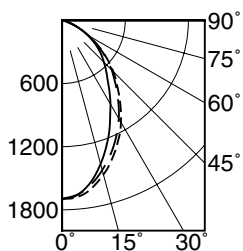
DUE TO OUR CONTINUING EFFORT TO IMPROVE PRODUCTS, TECHNICAL INFORMATION IS SUBJECT TO CHANGE WITHOUT NOTICE.

Alzak® is a registered trademark of ALCOA.

Detailed Photometry - Installed Fixture

Photometry from I.T.L., Boulder, CO

VRR-12006 (1 Triple 70)



--- 0° SC 1.0  
— 90° SC 0.9  
- · - 180° SC 1.0

EFFICIENCY : 51.7%

CANDLEPOWER DISTRIBUTION					
	0.0	45.0	90.0	135.0	180.0
0	1695	1695	1695	1695	1695
5	1683	1678	1665	1662	1662
15	1516	1469	1412	1440	1473
25	1260	1173	1075	1142	1217
35	963	870	775	847	928
45	687	615	562	605	667
55	412	379	377	379	411
65	183	174	181	172	185
75	39	39	38	38	38
85	0	0	0	0	0
90	0	0	0	0	0

COEFFICIENTS OF UTILIZATION							
RF	20						
RC	80				50		
RW	70	50	30	10	50	30	10
1	58	56	54	52	52	51	50
2	53	50	47	45	47	45	43
3	49	45	41	39	43	40	38
4	46	41	37	34	39	36	33
5	43	37	33	30	35	32	29
6	40	34	30	27	32	29	26
7	37	31	27	24	30	26	24
8	35	29	25	22	28	24	22
9	33	26	23	20	26	22	20
10	31	25	21	18	24	21	18

ITL TEST #59144 \*LER=32.0 •AEC=\$7.51

\* LER = Luminaire Efficiency Rating

$$LER = \frac{\text{Luminaire Effic.} \times \text{Total Lamp Lumens} \times \text{Ballast Factor}}{\text{Input Watts}}$$

• AEC = Annual Energy Cost per 1000 lumens (based on 3000 hours use @ \$0.08 KWH).

Options

Ballast, Wattage and Voltage

- 39 Installed electronic dimming ballast. Indoor use. 10°C (50°F) minimum start. Specify wattage, voltage and brand.
- 43 Lower wattage: 4-pin 57W triple/four tube or 42/32/26W triple or 26W quad (multi-wattage/voltage). Specify wattage.
- 97 Specify other voltage. Consult factory.
- 98 347 volt, 50/60 Hz. input. Consult factory.

Emergency Ballast - Specify Voltage<sup>1</sup>

Internal (factory installed) ballast, test switch and indicator light. Suitable for damp locations from 0°

- to 50°C (32° to 122°F) or with Cold Weather version (see -CE) -20° to 55°C (-4° to 131°F).
- 73 Internal 1-lamp EM ballast.
- CE Internal cold weather (-20° to 55°C) 1-lamp EM ballast. Specify voltage.
- HE<sup>1</sup> Internal higher lumen (up to 1250) 1-lamp EM ballast. 13-42W only.

Lenses and Trims

- 32 White oversize trim ring. Specify O.D.
- 45 Gasket between ceiling and trim flange.
- 46 Gasket between trim and lens.
- 94 Custom color/finish. Specify. Consult factory.
- CF High temperature color filter. Specify color.

- OG Black OptiGroove flare trim. (CP x .95)
- UV UV filter. Consult factory.

Other

- 79 Extension collar for ceilings up to 2" thick.
- 99 Special modification. Consult factory.
- FS Additional in-line fuse. Not available with Option -98(347V).
- LE With 4-pin electronic lamp. 3500°K standard. 82 CRI and 12,000 hour life. Specify wattage, style and color temperature.

<sup>1</sup> Visit [www.kirlinlighting.com](http://www.kirlinlighting.com) for most current performance / specifications.

SUBMITTAL DATA

APPROVAL STAMP

JOB NAME \_\_\_\_\_  
 TYPE \_\_\_\_\_  
 WATTAGE \_\_\_\_\_ VOLTAGE \_\_\_\_\_  
 CATALOG NUMBER \_\_\_\_\_

LIMITED WARRANTY: CATALOGED KIRLIN FIXTURES ARE WARRANTED FREE OF DEFECTS IN WORKMANSHIP OR MATERIAL FOR THREE YEARS FROM DATE OF PURCHASE. INSTALLER TO N.E.C. IN NORMAL USE. Manufacturer of the option will replace or repair such fixture or refund the purchase price on presentation of proof of purchase and defective fixture at the offices of manufacturer within three years of original shipment. Liability of manufacturer is limited to the foregoing and manufacturer shall not be liable for any other damages, direct or indirect, sustained or suffered by purchaser or any person. This warranty is supplied in place of all other warranties, expressed or implied. Seller does not warrant as to merchantability or fitness for a particular use, nor will any oral statement constitute a warranty or amend this specific warranty. Abnormal use, abuse of the fixture, improper installation, or repair, or modification of the fixture without prior written authorization from the manufacturer will render the warranty void.