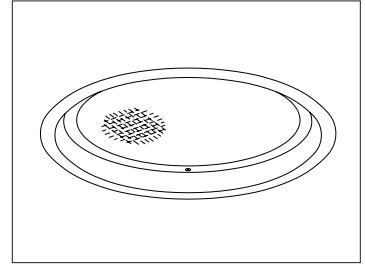


CATALOG #	TYPE	
JOB NAME	WATTAGE	VOLTAGE

10" 1 ED17 150 WATT MAXIMUM

VRR-10049

## Vandal Resistant Efficient Large Aperture Pulse Start MH



### Specifications

#### Lamp

- Designed for pulse start metal halide lamp: 150W medium base ED17.
- See Option -43 for lower wattages.

#### Socket

- Medium base. Pulse rated.
- Glazed porcelain. Silicone leads.

#### Reflector

- Specular Alzak® aluminum.

#### Trim / Lens Assembly

- Vandal resistant smooth white seamless tapered aluminum self-flanged trim or see Option -OG.
- Flush center pin tamperproof hex screws and captive nuts secure trim to housing.
- Lens: UV absorbing tempered prismatic C#73 above 1/4" clear tempered glass.
- Continuous ring secures lens to trim.
- Tamperproof tool included.

#### Ballast Assembly: Specify Voltage

- WhisperPack™ fully encapsulated 180°C rated HPF pulse start ballast.
- Class H, high reactance for 120V and Options -65, -66; linear reactor for 277V.
- See Option -PR for conventional probe start.
- Capacitor and ignitor supplied.
- Dimming (-39) and electronic (-96) ballasts available. See Options.
- Cool, quiet, long-life. Silicone leads.
- Visible and easily serviced in all ceilings.

#### Fuse

- Fused primary. Renewable. Aids servicing.

#### Aluminum Housing

- Acrylic enameled. Rustproof: Exceeds 1000 hour ASTM 5% salt spray test.
- Lightweight: Minimizes ceiling load.
- Cool operation: Extends component life.
- Entire luminaire serviced through aperture.
- Built-in plaster frame.

#### Outlet Box

- Prewired 14 GA (NEC) galvanized steel, UL listed. 1/2" and 3/4" knockouts.

#### Installation

- 27" galvanized hanger bars with adjustable mounting brackets (2) supplied.
- Recesses indoor or outdoor in covered locations.

#### UL, C-UL (Canada) Listings

- Wet, damp or dry locations, covered ceilings.
- Through-branch conductors (6#12 AWG 90°C).

#### Three Year Limited Warranty

- Complete standard fixture and ballast.

#### Thermal Protection

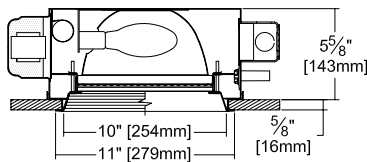
- Per current NEC.

### Performance at a Glance

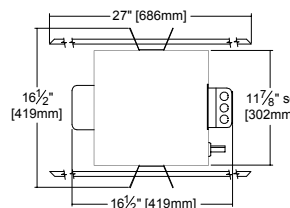
VRR-10049



Exceptional  
Energy  
Efficiency

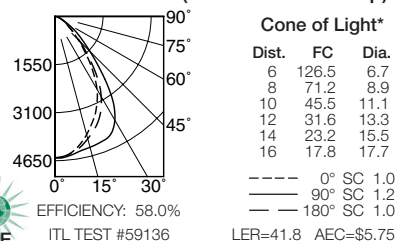


Option -OG Also Shown



Ceiling Cut-out  
10 1/2" Dia.

VRR-10049 (150W Coated Lamp)



#### Cone of Light Key

- Ft. Distance from fixture
- FC Footcandles at nadir (0°)
- Dia. Circle of light at 50% of FC

\* Dia. (in ft.) shown is where FC value is half the FC at nadir.

## THE KIRLIN COMPANY

3401 EAST JEFFERSON AVENUE • DETROIT, MICHIGAN 48207-4232  
(313) 259-6400 • Fax: (313) 259-9409 OR (313) 259-3121 • www.kirlinlighting.com

ENERGY EFFICIENT VANDAL RESISTANT  
& MAXIMUM SECURITY LIGHTING

MAXIMUM WATTAGE

ED17 150

CATALOG NUMBER

VRR-10049

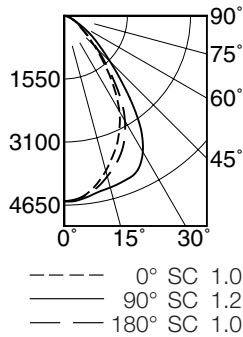
DUE TO OUR CONTINUING EFFORT TO IMPROVE PRODUCTS, TECHNICAL INFORMATION IS SUBJECT TO CHANGE WITHOUT NOTICE.

Alzak® is a registered trademark of ALCOA.

## Detailed Photometry - Installed Fixture

Photometry from I.T.L., Boulder, CO

## VRR-10049 (ED17 150 Coated Lamp)



EFFICIENCY : 58.0%

CANDLEPOWER DISTRIBUTION					
	0.0	45.0	90.0	135.0	180.0
0	4555	4555	4555	4555	4555
5	4492	4469	4529	4507	4485
15	3943	4101	4365	4226	4082
25	3178	3572	4215	3783	3459
35	2111	2599	3213	2736	2356
45	1057	1288	1597	1357	1134
55	481	624	764	645	512
65	264	270	274	282	267
75	69	81	93	78	60
85	0	0	0	0	0
90	0	0	0	0	0

COEFFICIENTS OF UTILIZATION							
RF	20						
RC	80				50		
RW	70	50	30	10	50	30	10
1	65	63	61	60	59	58	57
2	61	57	54	52	54	52	50
3	57	52	48	45	49	47	44
4	53	47	43	40	45	42	40
5	49	43	39	36	42	38	36
6	46	40	36	33	38	35	32
7	43	37	33	30	36	32	29
8	41	34	30	27	33	29	27
9	38	32	28	25	31	27	25
10	36	30	26	23	29	25	23

ITL TEST #59136 \*LER=41.8 •AEC=\$5.75

## \* LER = Luminaire Efficiency Rating

$$\text{LER} = \frac{\text{Luminaire Effic.} \times \text{Total Lamp Lumens} \times \text{Ballast Factor}}{\text{Input Watts}}$$
• AEC = Annual Energy Cost per 1000 lumens  
(based on 3000 hours use @ \$0.08 KWH).

## Options

## Sources and Ballasts

- 24 HPS ballast instead. Specify wattage and voltage.
- 39 Electronic dimming ballast instead, for pulse start metal halide. Consult factory for wattage and voltage availability.
- 96 Regulating electronic MH ballast instead.

## Wattage and Voltage

- 43 Lower wattage: 50-125 pulse, 35-100 HPS; Specify voltage.
- 120 120 volt, 60 Hz. ballast.
- 277 277 volt, 60 Hz. ballast.

- 347 347 volt, 60 Hz. ballast. Consult factory for dimming or electronic.
- 97 Other voltage ballast instead. Consult factory.

## Relays, Standbys, Lamps

- 49 Extra circuit DCB socket. 100W max. Do not energize simultaneously with main source. Also see Option -LS.
- 65 Electronic standby system and DCB socket. 100W max. Provides immediate light until HID restrikes. Also see Options -66 and -LS.
- 66 Electronic time delay standby system and DCB socket. 100W max. Provides light until HID reaches 70% output. Also see -LS.
- LP With lamp. Specify source, wattage, color temp, clear or coated. (3700°K std for MH)

- LS With T-4 DCB tungsten halogen standby lamp. Use only with -49, -65, -66.

## Lenses and Trims

- 32 White oversize trim ring. Specify O.D.
- 45 Gasket between trim and ceiling.
- 46 Gasket between trim and lens.
- 94 Custom color trim assembly. Consult factory.
- FR Fresnel tempered lens instead.
- OG Black OptiGroove flare trim instead. (CP x .95)

## Other

- 79 Extension collar for up to 2" thick ceilings.
- 99 Special modification. Consult factory.

## SUBMITTAL DATA

JOB NAME

TYPE

WATTAGE

VOLTAGE

CATALOG NUMBER

## APPROVAL STAMP

LIMITED WARRANTY: CATALOGED KIRLIN FIXTURES ARE WARRANTED FREE OF DEFECTS IN WORKMANSHIP OR MATERIAL FOR THREE YEARS FROM DATE OF PURCHASE. INSTALLATION TO N.E.C. IS NORMAL. USE. Manufacturer at the option will replace or repair such fixture or refund the purchase price on presentation of proof of purchase and defective fixture at the offices of manufacturer within three years of original shipment. Liability of manufacturer is limited to the foregoing, and manufacturer shall not be liable for any other damages, direct or indirect, sustained or suffered by purchaser or any person. This warranty is subject to the buyer in place of all other warranties, expressed or implied. Seller does not warrant as to merchantability or fitness for a particular use, nor will any oral statement constitute a warranty or amend this specific warranty. Abnormal use, abuse of the fixture, improper installation, or repair or modification of the fixture without prior written authorization from the manufacturer will render the warranty void.