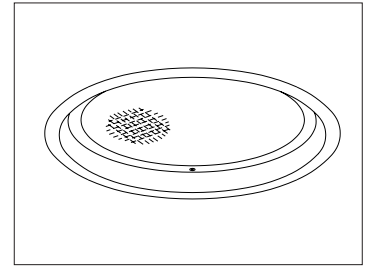


CATALOG #	TYPE	
JOB NAME	WATTAGE	VOLTAGE

10" 1 Triple 42 WATT MAXIMUM Type IC - VRR-10014

Vandal Resistant "IP65 Rated" Sealed & Gasketed Higher Wattage



Specifications

Lamp

- Designed for one 4-pin triple/four tube amalgam or quad compact fluorescent lamp: 42/32/26W triple or 26W quad.

Ballast: Multi-Wattage/Voltage

- Installed electronic high power factor, thermally protected. For lower wattages: Option -43.
- 120-277 multi-volt; 50-60 Hz. THD <10%.
- ClickQuick connectors for easy service.
- Cold weather -22°F (-30°C).
- End of lamp life protection circuit. RFI filter.
- Internally fused. Also see Option -FS.

Reflector

- Specular Alzak® aluminum.

Trim / Lens Assembly

- Vandal resistant smooth white seamless tapered aluminum self-flanged flare trim or see Option -OG.
- Flush center pin tamperproof hex screws (2) with captive nuts secure trim to housing.
- 3/16" prismatic high strength acrylic lens above 1/4" clear polycarbonate. Continuous ring secures lens to trim.

- Tamperproof tool included.
- 5X Sealed and Gasketed**

- (1) Silicone seal between trim and lens seals lens to trim, (2) closed cell gasketing between trim and housing flange seals trim to housing, (3) closed cell gasketing on trim flange seals flange to ceiling (4) closed cell gasketing on bottom pan seals housing to ceiling and (5) neoprene O-rings on stainless steel fasteners seal fasteners to trim.

Aluminum Housing

- Acrylic enameled. Rustproof: Exceeds 1000 hour ASTM 5% salt spray test.
- Built-in plaster frame surrounded by closed cell silicone gasketing seals housing to ceiling.
- Lightweight: Minimizes ceiling load.
- Cool operation: Extends component life.
- Entire luminaire serviced through aperture.
- Air Tight design. Meets / exceeds ASTM E283 restricted airflow of 2 CFM maximum.

Outlet Box

- Prewired 14 GA (NEC) galvanized steel, UL listed. 1/2" and 3/4" knockouts.



Exceptional Energy Efficiency



Installation

- 27" galvanized hanger bars with adjustable mounting brackets (2) supplied.
- Recesses indoor or outdoor in covered locations.

UL, C-UL (Canada) Listings

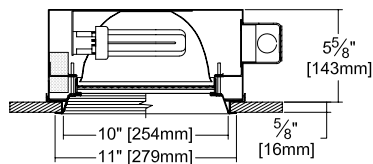
- Wet, damp or dry locations, covered ceilings.
- Type IC. Approved for direct contact with insulation.
- Through-branch conductors (6 #12 AWG 90°C).

Three Year Limited Warranty

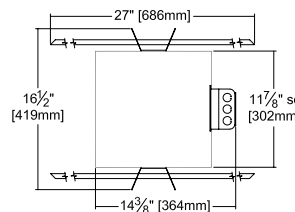
- Complete standard fixture and ballast.

Performance at a Glance

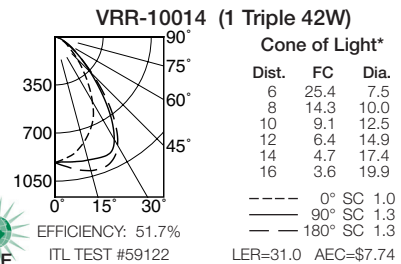
VRR-10014: Type IC



Option -OG Also Shown



Ceiling Cut-out
10 1/2" Dia.



Cone of Light Key
Ft. Distance from fixture
FC Footcandles at nadir (0°)
Dia. Circle of light at 50% of FC

* Dia. (in ft.) shown is where FC value is half the FC at nadir.

THE KIRLIN COMPANY

3401 EAST JEFFERSON AVENUE • DETROIT, MICHIGAN 48207-4232
 (313) 259-6400 • Fax: (313) 259-9409 OR (313) 259-3121 • www.kirlinlighting.com

**ENERGY EFFICIENT VANDAL RESISTANT
& MAXIMUM SECURITY LIGHTING**

MAXIMUM WATTAGE

1 Triple 42

CATALOG NUMBER

VRR-10014

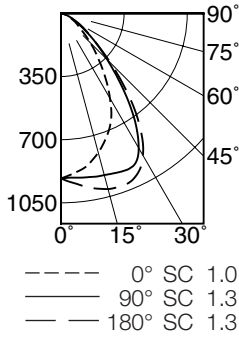
DUE TO OUR CONTINUING EFFORT TO IMPROVE PRODUCTS, TECHNICAL INFORMATION IS SUBJECT TO CHANGE WITHOUT NOTICE.

Alzak® is a registered trademark of ALCOA.

Detailed Photometry - Installed Fixture

Photometry from I.T.L., Boulder, CO

VRR-10014 (1 Triple 42)



EFFICIENCY : 51.7%

CANDLEPOWER DISTRIBUTION					
	0.0	45.0	90.0	135.0	180.0
0	915	915	915	915	915
5	887	895	914	937	947
15	799	853	928	974	1008
25	656	785	937	970	990
35	425	567	707	760	761
45	229	294	364	389	390
55	114	144	162	176	173
65	58	66	69	69	71
75	21	22	22	22	21
85	0	0	0	0	0
90	0	0	0	0	0

COEFFICIENTS OF UTILIZATION							
RF	20						
RC	80				50		
RW	70	50	30	10	50	30	10
1	58	56	54	53	53	52	51
2	54	51	48	46	48	46	44
3	50	46	43	40	44	41	39
4	47	42	38	35	40	37	35
5	44	38	34	32	37	34	31
6	41	35	31	28	34	31	28
7	38	32	28	26	31	28	25
8	36	30	26	23	29	26	23
9	34	28	24	21	27	24	21
10	32	26	22	20	25	22	20

ITL TEST #59122 *LER=31.0 •AEC=\$7.74

* LER = Luminaire Efficiency Rating
LER = $\frac{\text{Luminaire Effic.} \times \text{Total Lamp Lumens} \times \text{Ballast Factor}}{\text{Input Watts}}$

• AEC = Annual Energy Cost per 1000 lumens
(based on 3000 hours use @ \$0.08 KWH).

Options

Ballast, Wattage and Voltage

- 39 Installed electronic dimming ballast. Indoor use. 10°C (50°F) minimum start. Specify wattage, voltage and brand.
- 43 Lower wattage. 4-pin 18W triple or 18-13W quad. Specify wattage.
- 97 Specify other voltage. Consult factory.
- 98 347 volt, 50/60 Hz. input. Consult factory.

Emergency Ballast - Specify Voltage¹

Internal (factory installed) ballast, test switch and indicator light. Suitable for damp locations from 0°

- to 50°C (32° to 122°F) or with Cold Weather version (see -CE) -20° to 55°C (-4° to 131°F).
- 73 Internal 1-lamp EM ballast.
- CE Internal cold weather (-20° to 55°C) 1-lamp EM ballast. Specify voltage.
- HE¹ Internal higher lumen (up to 1250) 1-lamp EM ballast. 13-42W only.

Lenses and Trims

- 94 Custom color/finish. Specify. Consult factory.
- CF High temperature color filter. Specify color.
- OG Black OptiGroove flare trim. (CP x .95)

- UV UV filter. Consult factory.

Other

- 99 Special modification. Consult factory.
- FS Additional in-line fuse. Not available with Option -98(347V).
- LE With 4-pin electronic lamp. 3500°K standard. 82 CRI and 12,000 hour life. Specify wattage, style and color temperature.

¹ Visit www.kirlinlighting.com for most current performance / specifications.

SUBMITTAL DATA

JOB NAME _____
 TYPE _____
 WATTAGE _____ VOLTAGE _____
 CATALOG NUMBER _____

APPROVAL STAMP

LIMITED WARRANTY: CATALOGED KIRLIN FIXTURES ARE WARRANTED FREE OF DEFECTS IN WORKMANSHIP OR MATERIAL FOR THREE YEARS FROM DATE OF PURCHASE. INSTALL TO N.E.C. IN NORMAL USE. Manufacturer of the option will replace or repair such fixture or refund the purchase price on presentation of proof of purchase and defective fixture at the offices of manufacturer within three years of original shipment. Liability of manufacturer is limited to the foregoing and manufacturer shall not be liable for any other damages, direct or indirect, sustained or suffered by purchaser or any person. This warranty is supplied in place of all other warranties, expressed or implied. Seller does not warrant as to merchantability or fitness for a particular use, nor will any oral statement constitute a warranty or amend this specific warranty. Abnormal use, abuse of the fixture, improper installation, or repair or modification of the fixture without prior written authorization from the manufacturer will render the warranty void.