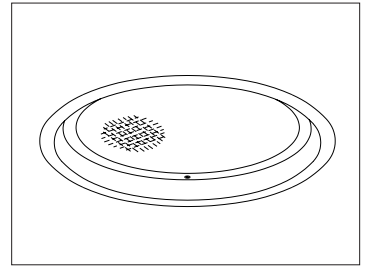


| | | |
|-----------|---------|---------|
| CATALOG # | TYPE | |
| JOB NAME | WATTAGE | VOLTAGE |

10" 1 Triple 42 WATT MAXIMUM Type IC - VRR-10004

Vandal Resistant Large Aperture for High Efficiency



Specifications

Lamp

- Designed for one 4-pin triple tube amalgam or quad compact fluorescent lamp: 42/32/26W triple or 26W quad.

Ballast: Multi-Wattage/Voltage

- Installed electronic high power factor, thermally protected. For lower wattages: Option -43.
- 120-277 multi-volt; 50-60 Hz. THD <10%.
- ClickQuick connectors for easy service.
- Cold weather -22°F (-30°C).
- End of lamp life protection circuit. RFI filter.
- Internally fused. Also see Option -FS.

Reflector

- Specular Alzak® aluminum.

Trim / Lens Assembly

- Vandal resistant smooth white seamless tapered aluminum self-flanged flare trim or see -OG.
- Flush center pin tamperproof hex screws and captive nuts secure trim to housing.
- Prismatic 3/16" high strength acrylic above 1/4" clear polycarbonate.

- Continuous ring secures lens to trim.
- Tamperproof tool included.

Aluminum Housing

- Acrylic enameled. Rustproof: Exceeds 1000 hour ASTM 5% salt spray test.
- Lightweight: Minimizes ceiling load.
- Cool operation: Extends component life.
- Entire luminaire serviced through aperture.
- Built-in plaster frame.

Outlet Box

- Prewired 14 GA (NEC) galvanized steel, UL listed. 1/2" and 3/4" knockouts.

Installation

- 27" galvanized hanger bars with adjustable mounting brackets (2) supplied.
- Recesses indoor or outdoor in covered locations.

UL, C-UL (Canada) Listings

- Wet, damp or dry locations, covered ceilings.
- Type IC (non-dimming). Approved for direct contact with insulation.
- Through-branch conductors (6#12 AWG 90°C).

Three Year Limited Warranty

- Complete standard fixture and ballast.



Exceptional
Energy
Efficiency



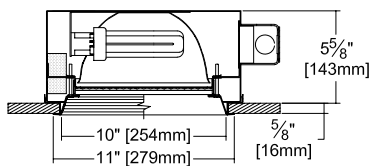
Type IC



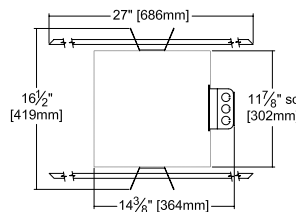
Premier
Product

Performance at a Glance

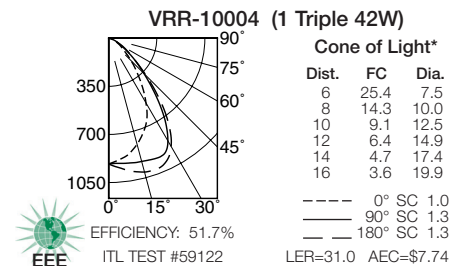
VRR-10004: Type IC



Option -OG Also Shown



Ceiling Cut-out
10 1/2" Dia.



Cone of Light Key
Ft. Distance from fixture
FC Footcandles at nadir (0°)
Dia. Circle of light at 50% of FC

* Dia. (in ft.) shown is where FC value is half the FC at nadir.

THE KIRLIN COMPANY

3401 EAST JEFFERSON AVENUE • DETROIT, MICHIGAN 48207-4232
(313) 259-6400 • Fax: (313) 259-9409 OR (313) 259-3121 • www.kirlinlighting.com

ENERGY EFFICIENT VANDAL RESISTANT
& MAXIMUM SECURITY LIGHTING

MAXIMUM WATTAGE

1 Triple 42

CATALOG NUMBER

VRR-10004

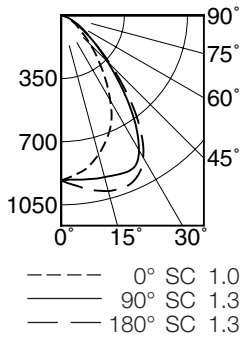
DUE TO OUR CONTINUING EFFORT TO IMPROVE PRODUCTS, TECHNICAL INFORMATION IS SUBJECT TO CHANGE WITHOUT NOTICE.

Alzak® is a registered trademark of ALCOA.

Detailed Photometry - Installed Fixture

Photometry from I.T.L., Boulder, CO

VRR-10004 (1 Triple 42)



EFFICIENCY : 51.7%

| CANDLEPOWER DISTRIBUTION | | | | | |
|--------------------------|-----|------|------|-------|-------|
| | 0.0 | 45.0 | 90.0 | 135.0 | 180.0 |
| 0 | 915 | 915 | 915 | 915 | 915 |
| 5 | 887 | 895 | 914 | 937 | 947 |
| 15 | 799 | 853 | 928 | 974 | 1008 |
| 25 | 656 | 785 | 937 | 970 | 990 |
| 35 | 425 | 567 | 707 | 760 | 761 |
| 45 | 229 | 294 | 364 | 389 | 390 |
| 55 | 114 | 144 | 162 | 176 | 173 |
| 65 | 58 | 66 | 69 | 69 | 71 |
| 75 | 21 | 22 | 22 | 22 | 21 |
| 85 | 0 | 0 | 0 | 0 | 0 |
| 90 | 0 | 0 | 0 | 0 | 0 |

| COEFFICIENTS OF UTILIZATION | | | | | | | |
|-----------------------------|----|----|----|----|----|----|----|
| RF | 20 | | | | | | |
| RC | 80 | | | | 50 | | |
| RW | 70 | 50 | 30 | 10 | 50 | 30 | 10 |
| 1 | 58 | 56 | 54 | 53 | 53 | 52 | 51 |
| 2 | 54 | 51 | 48 | 46 | 48 | 46 | 44 |
| 3 | 50 | 46 | 43 | 40 | 44 | 41 | 39 |
| 4 | 47 | 42 | 38 | 35 | 40 | 37 | 35 |
| 5 | 44 | 38 | 34 | 32 | 37 | 34 | 31 |
| 6 | 41 | 35 | 31 | 28 | 34 | 31 | 28 |
| 7 | 38 | 32 | 28 | 26 | 31 | 28 | 25 |
| 8 | 36 | 30 | 26 | 23 | 29 | 26 | 23 |
| 9 | 34 | 28 | 24 | 21 | 27 | 24 | 21 |
| 10 | 32 | 26 | 22 | 20 | 25 | 22 | 20 |

ITL TEST #59122 *LER=31.0 •AEC=\$7.74

* LER = Luminaire Efficiency Rating

$$LER = \frac{\text{Luminaire Effic.} \times \text{Total Lamp Lumens} \times \text{Ballast Factor}}{\text{Input Watts}}$$

• AEC = Annual Energy Cost per 1000 lumens (based on 3000 hours use @ \$0.08 KWH).

Options

Ballast, Wattage and Voltage

- 39 Installed electronic dimming ballast. Not Type IC listed. Indoor use. 10°C (50°F) minimum start. Specify wattage, voltage and brand.
- 43 Lower wattage. For 4-pin 18W triple or 18-13W quad. Specify wattage.
- 97 Specify other voltage. Consult factory.
- 98 347 volt, 50/60 Hz. input. Consult factory.

Emergency Ballast - Specify Voltage¹

Internal (factory installed) ballast, test switch and indicator light. Suitable for damp locations from 0° to 50°C (32° to 122°F) or with Cold Weather version (see -CE) -20° to 55°C (-4° to 131°F).

- 73 Internal EM ballast. Specify voltage.
- CE Internal cold weather (-20° to 55°C) EM ballast. Specify voltage.
- HE¹ Internal higher lumen (up to 1250) EM ballast. 13-42W only. Specify voltage.

Lenses and Trims

- 32 White oversize trim ring. Specify O.D.
- 45 Gasket between ceiling and trim flange.
- 46 Gasket between trim and lens.
- 94 Custom color/finish. Specify. Consult factory.
- CF High temperature color filter. Specify color.
- OG Black OptiGroove flare trim. (CP x .95)
- UV UV filter. Consult factory.

Other

- 79 Extension collar for ceilings up to 2" thick.
- 99 Special modification. Consult factory.
- FS Additional in-line fuse. Not available with Option -98(347V).
- LE With 4-pin electronic lamp. 3500°K standard. 82 CRI and 12,000 hour life. Specify wattage, style and color temperature.

¹ Visit www.kirlinlighting.com for most current performance/specifications.

SUBMITTAL DATA

JOB NAME
TYPE
WATTAGE VOLTAGE
CATALOG NUMBER

APPROVAL STAMP

LIMITED WARRANTY: CATALOGED KIRLIN FIXTURES ARE WARRANTED FREE OF DEFECTS IN WORKMANSHIP OR MATERIAL FOR THREE YEARS FROM DATE OF PURCHASE. INSTALL TO N.E.C. IN NORMAL USE. Manufacturer of the fixture will replace or repair such fixture or refund the purchase price on presentation of proof of purchase and defective fixture at the offices of manufacturer within three years of original shipment. Liability of manufacturer is limited to the foregoing and manufacturer shall not be liable for any other damages, direct or indirect, sustained or suffered by purchaser or any person. This warranty is supplied in place of all other warranties, expressed or implied. Seller does not warrant as to merchantability or fitness for a particular use, nor will any oral statement constitute a warranty or amend this specific warranty. Abnormal use, abuse of the fixture, improper installation, or repair, or modification of the fixture without prior written authorization from the manufacturer will render the warranty void.