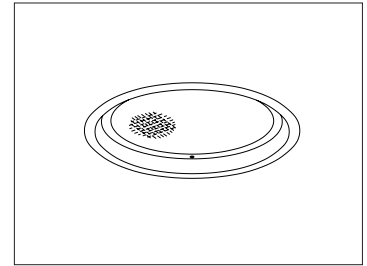


CATALOG #	TYPE	
JOB NAME	WATTAGE	VOLTAGE

8" 1 A21 150 WATT MAXIMUM

VRR-08057

## Vandal Resistant Incandescent with Higher Lumen Output



### Specifications

#### Lamp/Socket

- Designed for one horizontal incandescent lamp: 150W frosted A21.
- Dimmable (controls by others).
- Glazed porcelain medium base socket.

#### Reflector

- Specular Alzak® aluminum.

#### Trim / Lens Assembly

- Vandal resistant smooth white seamless tapered aluminum self-flanged trim or see Option -OG.
- Flush center pin tamperproof hex screws and captive nuts secure trim to housing.
- Lens: Tempered prismatic C#73 above 1/4" clear tempered glass.
- Continuous ring secures lens to trim.
- Tamperproof tool included.

#### Aluminum Housing

- Acrylic enameled. Rustproof: Exceeds 1000 hour ASTM 5% salt spray test.

- Lightweight: Minimizes ceiling load.
- Cool operation: Extends component life.
- Entire luminaire serviced through aperture.
- Built-in plaster frame.

#### Outlet Box and Thermal Protection

- Prewired 14 GA (NEC) galvanized steel, UL listed. 1/2" and 3/4" knockouts.
- Thermal protector (per current NEC) provides automatic cut-off if rated temperature is exceeded.

#### Installation

- 27" galvanized hanger bars with adjustable mounting brackets (2) supplied.
- Recesses indoor or outdoor in covered locations.

#### UL, C-UL (Canada) Listings

- Wet, damp or dry locations, covered ceilings.
- Through-branch conductors (6 #12 AWG 90°C).

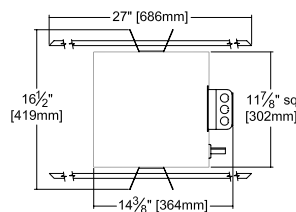
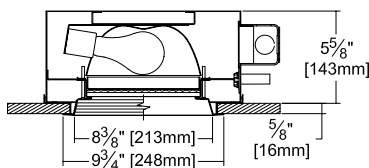
#### Three Year Limited Warranty

- Complete standard fixture.



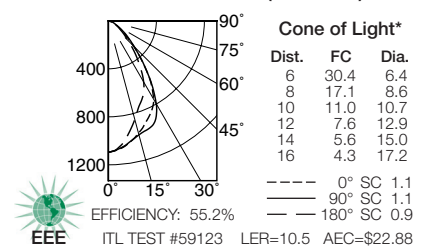
### Performance at a Glance

VRR-08057



Ceiling Cut-out  
9" Dia.

VRR-08057 (150 Watt)



#### Cone of Light Key

- Ft.** Distance from fixture
- FC** Footcandles at nadir (0°)
- Dia.** Circle of light at 50% of FC

\* Dia. (in ft.) shown is where FC value is half the FC at nadir.

## THE KIRLIN COMPANY

3401 EAST JEFFERSON AVENUE • DETROIT, MICHIGAN 48207-4232  
(313) 259-6400 • Fax: (313) 259-9409 OR (313) 259-3121 • www.kirlinlighting.com

**ENERGY EFFICIENT VANDAL RESISTANT  
& MAXIMUM SECURITY LIGHTING**

MAXIMUM WATTAGE

**A21 150**

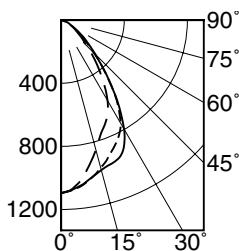
CATALOG NUMBER

**VRR-08057**

Detailed Photometry - Installed Fixture

Photometry from I.T.L., Boulder, CO

VRR-08057 (A21 150)



--- 0° SC 1.1  
 — 90° SC 1.1  
 - · - 180° SC 0.9

EFFICIENCY : 55.2%

CANDLEPOWER DISTRIBUTION					
	0.0	45.0	90.0	135.0	180.0
0	1096	1096	1096	1096	1096
5	1072	1083	1068	1063	1054
15	969	1014	984	904	851
25	841	967	921	792	685
35	610	629	617	512	456
45	296	312	306	265	233
55	128	149	145	133	114
65	56	63	62	64	65
75	14	19	22	21	20
85	2	6	6	6	6
90	0	0	0	0	0

COEFFICIENTS OF UTILIZATION							
RF	20						
RC	80				50		
RW	70	50	30	10	50	30	10
1	62	60	58	57	56	55	54
2	58	54	52	49	52	49	48
3	54	49	46	43	47	44	42
4	50	45	41	38	43	40	38
5	47	41	37	34	40	36	34
6	44	38	34	31	37	33	31
7	41	35	31	28	34	31	28
8	39	33	29	26	32	28	26
9	37	30	27	24	30	26	24
10	35	28	25	22	28	24	22

ITL TEST #59123 \*LER=10.5 •AEC=\$22.88

\* LER = Luminaire Efficiency Rating

LER =  $\frac{\text{Luminaire Effic.} \times \text{Total Lamp Lumens} \times \text{Ballast Factor}}{\text{Input Watts}}$

• AEC = Annual Energy Cost per 1000 lumens (based on 3000 hours use @ \$0.08 KWH).

Options

Voltage

-58 277/120V stepdown transformer for 277 volt line input, prewired into fixture.

Lenses and Trims

- 32 White oversize trim ring. Specify O.D.
- 45 Gasket between ceiling and trim flange.
- 46 Gasket between trim and lens.
- 94 Custom color/finish. Specify. Consult factory.
- OG Black OptiGroove flare trim instead. (CP x .95)

Other

- 79 Extension collar for ceilings up to 2" thick.
- 99 Special modification. Consult factory.

SUBMITTAL DATA

JOB NAME  
 TYPE  
 WATTAGE VOLTAGE  
 CATALOG NUMBER

APPROVAL STAMP

LIMITED WARRANTY: CATALOGED KIRLIN FIXTURES ARE WARRANTED FREE OF DEFECTS IN WORKMANSHIP OR MATERIAL FOR THREE YEARS FROM DATE OF PURCHASE. INSTALLATION TO N.E.C. IN NORMAL USE. Manufacturer of the option will replace or repair such fixture or refund the purchase price on presentation of proof of purchase and defective fixture at the offices of manufacturer within three years of original shipment. Liability of manufacturer is limited to the foregoing and manufacturer shall not be liable for any other damages, direct or indirect, sustained or suffered by purchaser or any person. This warranty is subject to the buyer in place of all other warranties, expressed or implied. Seller does not warrant as to merchantability or fitness for a particular use, nor will any oral statement constitute a warranty or amend this specific warranty. Abnormal use, abuse of the fixture, improper installation, or repair or modification of the fixture without prior written authorization from the manufacturer will render the warranty void.