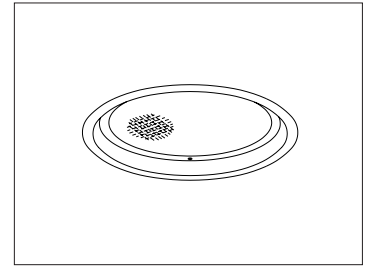


CATALOG #	TYPE	
JOB NAME	WATTAGE	VOLTAGE

8" 1 PAR 38 250 WATT MAXIMUM

VRR-08055

## Vandal Resistant Small Aperture PAR 38



### Specifications

#### Lamp/Socket

- Designed for one tungsten halogen lamp: 250W PAR 38.
- Dimmable (controls by others).
- Glazed porcelain medium base socket.

#### Reflector

- Specular Alzak® aluminum.

#### Trim / Lens Assembly

- Vandal resistant smooth white seamless tapered aluminum self-flanged trim or see Option -OG.
- Flush center pin tamperproof hex screws and captive nuts secure trim to housing.
- Tempered microprismatic glass above 1/4" clear tempered glass.
- Continuous ring secures lens to trim.
- Tamperproof tool included.

#### Aluminum Housing

- Acrylic enameled. Rustproof: Exceeds 1000 hour ASTM 5% salt spray test.

- Lightweight: Minimizes ceiling load.
- Cool operation: Extends component life.
- Entire luminaire serviced through aperture.
- Built-in plaster frame.

#### Outlet Box and Thermal Protection

- Prewired 14 GA (NEC) galvanized steel, UL listed. 1/2" and 3/4" knockouts.
- Thermal protector (per current NEC) provides automatic cut-off if rated temperature is exceeded.

#### Installation

- 27" galvanized hanger bars with adjustable mounting brackets (2) supplied.
- Recesses indoor or outdoor in covered locations.

#### UL, C-UL (Canada) Listings

- Wet, damp or dry locations, covered ceilings.
- Through-branch conductors (6 #12 AWG 90°C).

#### Three Year Limited Warranty

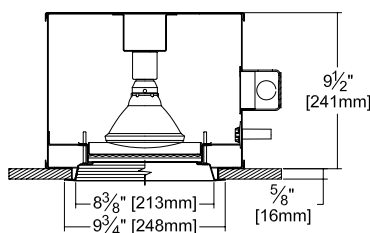
- Complete standard fixture.



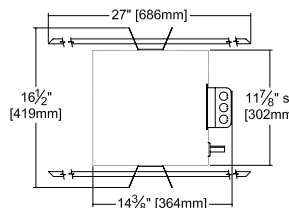
**Exceptional  
Energy  
Efficiency**

### Performance at a Glance

VRR-08055



Option -OG Also Shown

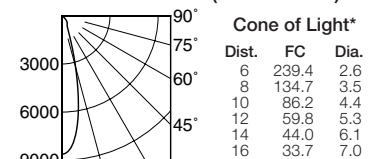


Ceiling Cut-out  
9" Dia.

**Cone of Light Key**  
Ft. Distance from fixture  
FC Footcandles at nadir (0°)  
Dia. Circle of light at 50% of FC

\* Dia. (in ft.) shown is where FC value is half the FC at nadir.

VRR-08055 (250W Flood)



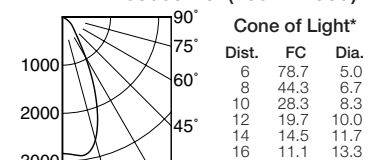
SC = 0.4

EFFICIENCY: 77.8%

ITL TEST #58942 LER=11.23 AEC=\$21.42



VRR-08055-15 (250W Flood)



SC = 0.8

EFFICIENCY: 70.4%

ITL TEST #58987 LER=10.1 AEC=\$23.67



## THE KIRLIN COMPANY

3401 EAST JEFFERSON AVENUE • DETROIT, MICHIGAN 48207-4232  
(313) 259-6400 • Fax: (313) 259-9409 OR (313) 259-3121 • www.kirlinlighting.com

**ENERGY EFFICIENT VANDAL RESISTANT  
& MAXIMUM SECURITY LIGHTING**

MAXIMUM WATTAGE

PAR38 250

CATALOG NUMBER

VRR-08055

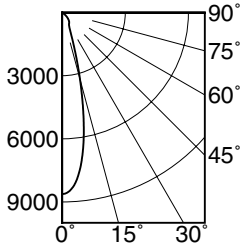
DUE TO OUR CONTINUING EFFORT TO IMPROVE PRODUCTS, TECHNICAL INFORMATION IS SUBJECT TO CHANGE WITHOUT NOTICE.

Alzak® is a registered trademark of ALCOA.

Detailed Photometry - Installed Fixture

Photometry from I.T.L., Boulder, CO

VRR-08055 (PAR38 250 Flood)



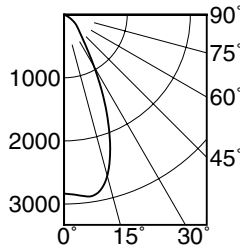
SC = 0.4  
EFFICIENCY : 77.8%

CANDLEPOWER DISTRIBUTION					
	0.0	22.5	45.0	67.5	90.0
0	8618	8618	8618	8618	8618
5	7973	7973	7973	7973	7973
15	3268	3268	3268	3268	3268
25	858	858	858	858	858
35	582	582	582	582	582
45	373	373	373	373	373
55	99	99	99	99	99
65	23	23	23	23	23
75	7	7	7	7	7
85	0	0	0	0	0
90	0	0	0	0	0

COEFFICIENTS OF UTILIZATION							
RF	20						
RC	80			50			
RW	70	50	30	10	50	10	
1	89	87	85	83	82	81	80
2	85	81	78	76	77	75	73
3	81	76	73	70	73	70	68
4	77	72	68	65	69	66	64
5	74	68	64	61	66	63	60
6	71	65	60	57	63	59	57
7	68	61	57	54	60	56	54
8	65	59	55	52	57	54	51
9	63	56	52	49	55	52	49
10	61	54	50	47	53	50	47

ITL TEST #58942 \*LER=11.23 •AEC=\$21.42

VRR-08055-15 (PAR38 250 Flood)



SC = 0.8  
EFFICIENCY : 70.4%

CANDLEPOWER DISTRIBUTION					
	0.0	22.5	45.0	67.5	90.0
0	2834	2834	2834	2834	2834
5	2876	2876	2876	2876	2876
15	2643	2643	2643	2643	2643
25	1508	1508	1508	1508	1508
35	595	595	595	595	595
45	316	316	316	316	316
55	175	175	175	175	175
65	47	47	47	47	47
75	7	7	7	7	7
85	0	0	0	0	0
90	0	0	0	0	0

COEFFICIENTS OF UTILIZATION							
RF	20						
RC	80			50			
RW	70	50	30	10	50	10	
1	80	77	76	74	73	72	71
2	75	72	69	66	68	66	64
3	71	66	62	59	63	60	58
4	67	62	57	54	59	56	53
5	64	57	53	50	55	52	49
6	60	54	49	46	52	48	46
7	57	50	46	43	49	45	42
8	54	47	43	40	46	42	40
9	52	45	40	37	44	40	37
10	49	42	38	35	41	38	35

ITL TEST #58987 \*LER=10.1 •AEC=\$23.67

\* LER = Luminaire Efficiency Rating  
LER = Luminaire Effic. x Total Lamp Lumens x Ballast Factor  
Input Watts

\* AEC = Annual Energy Cost per 1000 lumens  
(based on 3000 hours use @ \$0.08 kWh).

Options

Voltage

-58 277/120V stepdown transformer for 277 volt line input, prewired into fixture.

Lenses and Trims

- 15 Tempered prismatic C#73 lens instead above 1/4" clear tempered glass.
- 32 White oversize trim ring. Specify O.D.
- 45 Gasket between ceiling and trim flange.
- 46 Gasket between trim and lens.
- 94 Custom color/finish. Specify. Consult factory.
- OG Black OptiGroove flare trim instead. (CP x .95)

Other

- 79 Extension collar for ceilings up to 2" thick.
- 99 Special modification. Consult factory.
- TA Top access for servicing from above.

SUBMITTAL DATA

JOB NAME  
TYPE  
WATTAGE  
VOLTAGE  
CATALOG NUMBER

APPROVAL STAMP

LIMITED WARRANTY: CATALOGED KIRLIN FIXTURES ARE WARRANTED FREE OF DEFECTS IN WORKMANSHIP OR MATERIAL FOR THREE YEARS FROM DATE OF PURCHASE. INSTALLED TO N.E.C. IN NORMAL USE. Manufacturer at the option will replace or repair such fixture or refund the purchase price on presentation of proof of purchase and defective fixture at the office of manufacturer within three years of original shipment. Liability of manufacturer is limited to the foregoing, and manufacturer shall not be liable for any other damages, direct or indirect, sustained or suffered by purchaser or any person. This warranty is subject to the buyer in place of all other warranties, expressed or implied. Seller does not warrant as to merchantability or fitness for a particular use, nor will any oral statement constitute a warranty or amend this specific warranty. Abnormal use, abuse of the fixture, improper installation, or repair or modification of the fixture without prior written authorization from the manufacturer will render the warranty void.