

Open Cylinders: Vertical Lamp

Features

Lamp

- Designed for:
 - 1 vertical Triple Tube 32 watt: SR80632
 - 1 vertical Triple Tube 42 watt: SR80933
- 4-pin GX24q-3 base: SR80632
- 4-pin GX24q-4 base: SR80933
- 90% lumen output maintained at ballast minimum operating temperature.
- Flicker-free starting, high light output, excellent color rendering (82 CRI).
- Long 10,000 hour life.
- High efficiency with low operating costs.
- See Option -43 for lower wattage.

Ballast

- Regulating electronic high power factor, thermally protected, enclosed.
- SR80632: -5° to -10°C (14° - 23°F) rated. Cold weather available, see Option -CW.
- SR80933: Cold weather standard, -18°C to -20°C (0°F to -5°F) rated.
- Built-in RIF filter, THD is less than 10%.
- 120 volt standard or see optional voltages.
- Dimming optional. See Option -39 for availability and restrictions.

Fuse

- Available as Option -FS.

Reflector

- Self-flanged (SR80933) low incidence specular Alzak® aluminum.
- Optional SofTex softly etched Clear, Dune, Champagne Gold or Wheat available.

Housing

- Seamless white acrylic enameled aluminum.
- No visible cylinder hardware.
- Cool: Dissipates heat across entire surface area.
- Rustproof: Exceeds 1000 hour ASTM 5% salt spray test.

Installation

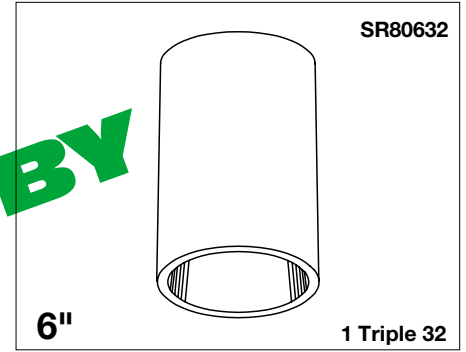
- Center point mounting with snug fit to ceiling. Mounting hardware furnished.
- Indoor or outdoor for covered ceiling use. (See Option -39)
- Collar for mounting beneath surface outlet box available. (Option -80)
- Pendant mount available. (Option -PM)
- Wall bracket available. (Option -WB)

UL, C-UL (Canada) Listings

- Wet, damp or dry locations, covered ceilings.

Three Year Limited Warranty

- Complete standard fixture.

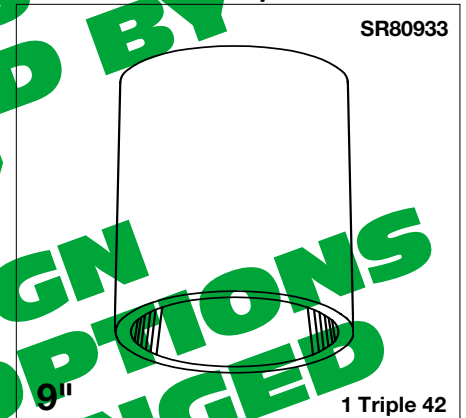


6"

SR80632

1 Triple 32

54% Efficiency
Slender Proportions



9"

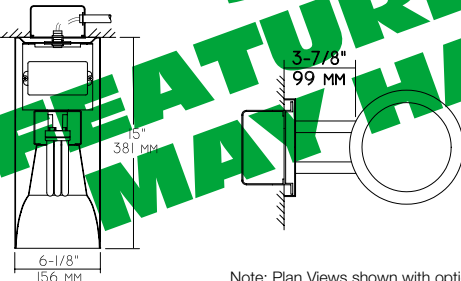
SR80933

1 Triple 42

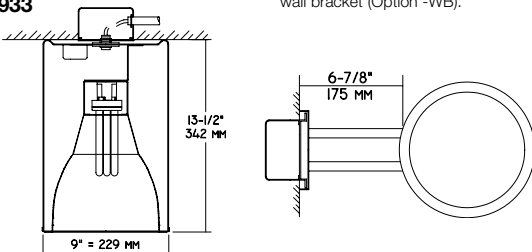
69% Efficiency

Performance at a Glance

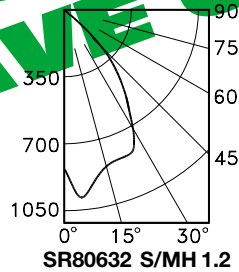
SR80632



SR80933



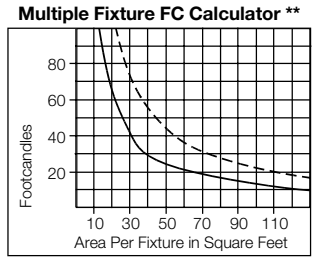
Note: Plan Views shown with optional wall bracket (Option -WB).



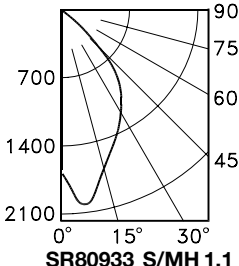
SR80632 S/MH 1.2

Cone of Light*		
Ft.	FC	Dia.
6	23.5	6.8
8	13.2	9.0
10	8.5	11.3
12	5.9	13.5
14	4.3	15.8
16	3.3	18.1

SR80632



SR80632 — SR80933 - - -



SR80933 S/MH 1.1

Cone of Light*		
Ft.	FC	Dia.
6	46.0	5.9
8	25.9	7.8
10	16.5	9.8
12	11.5	11.7
14	8.4	13.7
16	6.5	15.6

SR80933

Cone of Light Key

- Ft.** Distance from fixture
- FC** Footcandles (average)
- Dia.** Circle of light at 50% of FC

* Dia. (in ft.) shown is where FC value is half the FC at nadir.

** Based on RCR2; ceiling 70%; wall 50%; floor 20%. Use S/MH shown for each fixture.

THE KIRLIN COMPANY

3401 EAST JEFFERSON AVENUE • DETROIT, MICHIGAN 48207-4232
(313) 259-6400 • Fax: (313) 259-9409 OR (313) 259-3121

SECOND CENTURY SERIES
TRIPLE TUBE
COMPACT FLUORESCENT LIGHTING

MAXIMUM WATTAGE

1 Triple 32
1 Triple 42

CATALOG NUMBERS

SR80632
SR80933

DUE TO OUR CONTINUING EFFORT TO IMPROVE PRODUCTS, TECHNICAL INFORMATION IS SUBJECT TO CHANGE WITHOUT NOTICE.

Alzak® is a registered trademark of ALCOA.

Detailed Photometry - Installed Fixture

FROM I.T.L. (BOULDER, CO) SR80632: TEST NUMBER 43396
SR80933: TEST NUMBER 44207

SR80632

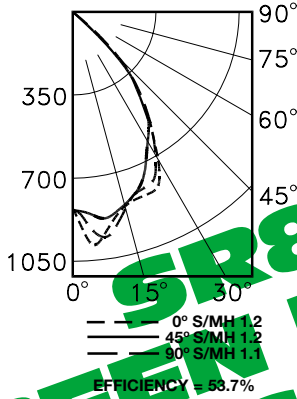
*LER = 36.0
•AEC = \$6.67

CANDLEPOWER DISTRIBUTION

	0.0	22.5	45.0	67.5	90.0
0	847	847	847	847	847
5	972	954	915	875	867
15	852	881	963	839	843
25	802	811	786	739	738
35	567	575	580	563	576
45	316	324	301	307	310
55	2	2	2	2	4
65	2	2	2	2	2
75	0	0	0	0	0
85	0	0	0	0	0
95	0	0	0	0	0

COEFFICIENTS OF UTILIZATION

RF	20					
	80			50		
RC	70	50	30	50	30	10
1	61	59	58	56	55	54
2	57	54	52	50	52	48
3	54	50	47	45	48	44
4	51	46	43	40	44	39
5	48	43	39	36	41	38
6	45	39	36	33	38	33
7	42	36	33	30	35	30
8	40	34	30	28	33	28
9	37	32	28	26	31	28
10	35	29	26	24	29	25



* LER = Luminaire Efficiency Rating
LER = Luminaire Effic. x Total Lamp Lumens x Ballast Factor
Input Watts

• AEC = Annual Energy Cost per
1000 lumens (based on 3000
hours use @ \$0.08 KWH).

SR80933

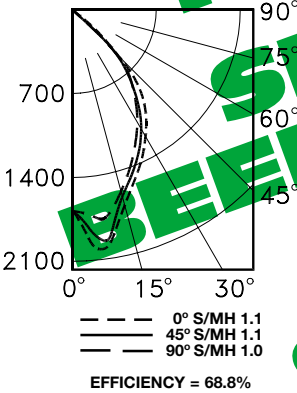
*LER = 46.5
•AEC = \$5.16

CANDLEPOWER DISTRIBUTION

	0.0	22.5	45.0	67.5	90.0
0	1655	1655	1655	1655	1655
5	1988	1933	1836	1723	1694
15	1662	1672	1603	1552	1554
25	1295	1308	1233	1211	1161
35	1005	1000	914	996	886
45	540	546	500	535	520
55	4	4	5	10	10
65	0	0	0	0	0
75	0	0	0	0	0
85	0	0	0	0	0
95	0	0	0	0	0

COEFFICIENTS OF UTILIZATION

RF	20					
	80			50		
RC	70	50	30	50	30	10
1	78	76	74	72	71	69
2	73	70	67	64	66	62
3	69	64	61	58	62	56
4	65	60	55	52	54	51
5	61	55	51	47	53	47
6	58	51	47	43	49	43
7	55	47	43	40	46	39
8	51	44	40	37	43	36
9	49	41	37	34	40	34
10	46	39	34	31	38	31



Estimated Multipliers

- 70 SofTex Clear: CP x .93
- 71 SofTex Dune: CP x .87
- 90 SofTex Champagne Gold: CP x .90
- 91 SofTex Wheat: CP x .87

Options*

- 31 White reflector trim, self-flanged. (SR80933)
- 35 Silver enameled luminaire finish instead.
- 36 Gold enameled luminaire finish instead.
- 37 Dark Bronze enameled luminaire finish instead.
- 38 Black enameled luminaire finish instead.
- 39 Consult factory for 18, 26, 32 or 42 watt installed electronic dimming ballast. Also see Options -LE and -WD. Indoor use.
- 43 Lower wattage triple tube: Specify 1-26 or 18 watt (SR80632); 1-32, 26 or 18 watt (SR80933).
- 58 277 volt 60 Hz. ballast instead.
- 70 SofTex Clear softly etched reflector. Resists smudges. (CP x .93)
- 71 SofTex Dune softly etched reflector. Resists smudges. (CP x .87)
- 75 Remote emergency "Ni-Cad" battery pack. 4' of flex provided for maximum mounting distance. For indoor use.
- 80 2" white extension collar for mounting luminaire beneath surface outlet box. Finish will match housing color selected.
- 87 Custom -PM length. Specify up to 5 feet or consult factory. Use with Option -PM.
- 88 Swivel canopy for sloped ceilings up to 45°. Earthquake rated. Use with Option -PM.
- 89 WeatherCap - required when luminaire is installed without covered ceiling protection. Use with -WB.
- 90 SofTex Champagne Gold softly etched reflector. Resists smudges. (CP x .90)
- 91 SofTex Wheat softly etched reflector. Resists smudges. (CP x .87)
- 94 Specular Pewter or Umber or other specified
- custom color reflector or custom color luminaire. Specify parts. Consult factory.
- 97 Other voltage ballast. Consult factory.
- 98 347 volt 60 Hz. ballast instead. Consult factory.
- 99 Special modification. Consult factory.
- CW Cold weather electronic HPF ballast for SR80632. -18°C to -20°C (0°F to -5°F). (Standard: SR80933)
- FS Fused. Replaceable. Aids servicing.
- LE With 4-pin electronic Triple Tube amalgam lamp. 82 CRI and 10,000 hour life. 3500°K or consult factory for 2700°K, 3000°K or 4100°K. Specify wattage and color temperature.
- PM Pendant mount instead. 3/8" T.S. (1/2" T.S. with Option -75) x 8" standard. Also see -87 and -88.
- WB Wall bracket mount instead. Also see Option -89.
- WD Wall Dimmer for use with Option -39. Consult factory for use with 18 or 26 watt.

SUBMITTAL DATA

APPROVAL STAMP

JOB NAME _____
 TYPE _____
 WATTAGE _____ VOLTAGE _____
 CATALOG NUMBER _____

* NOTE: ALL REFLECTORS FOR SR80933 ARE SELF-FLANGED.

LIMITED WARRANTY: CATALOGUED KIRLIN FIXTURES ARE WARRANTED FREE OF DEFECTS IN WORKMANSHIP OR MATERIAL FOR THREE YEARS FROM DATE OF PURCHASE. INSTALLATION, E.C., IN NORMAL USE. Manufacturer at his option will replace or repair such fixture or refund the purchase price on presentation of proof of purchase and defective fixture at the office of manufacturer within the years of original shipment. Liability of manufacturer is limited to the foregoing and manufacturer will not be liable for any other damages, direct or indirect, sustained or suffered by purchaser or any person. This warranty is supplied for the fixture in place at the time of purchase. Other warranties, expressed or implied, Seller does not warrant as to merchantability or fitness for a particular use, nor, without oral statement, constitute a warranty or amend the specific warranty. Abandonment use, abuse of the fixture, improper installation, or repair, or modification of the fixture without prior written authorization from the manufacturer will void the warranty.