

Architectural Style Vandal Resistant Regressed Lens

Features

Lamp / Socket

- Designed for:
 - RV21039: Horizontal 150 watt (max.) A-21 inside frosted incandescent lamp (by others).
 - RV21240: Horizontal 300 watt (max.) PS-25 inside frosted incandescent lamp (by others).
- Dimmable (controls by others).
- Glazed porcelain medium base socket.

Reflector

- Clear specular Alzak® 100% aluminum.

Trim Assembly

- Tamper-resistant, seamless tapered black OptiGroove with self-flanged white trim.
- Flush tamperproof hex screws with center pin secure trim to captive nuts in housing.
- Continuous ring and four screws secure lens.
- Lens combines tempered C#73 prismatic lens overlay with 1/4" clear tempered glass below for added vandal resistance.

Housing

- Acrylic enameled 100% aluminum.
- Rustproof: Exceeds 1000 hour ASTM 5% salt spray test.
- Cool: Dissipates heat across entire surface area.

- Entire luminaire visible and serviceable from below through removable trim assembly.
- Built-in plaster frame.

Outlet Box

- Prewired 14GA (NEC) galvanized steel. UL listed. With removable insulated cover.
- 1/2" and 3/4" knockouts.

Installation

- 27" galvanized hanger bars supplied (2).
- Fully adjustable universal galvanized mounting brackets supplied (2). Accepts 3/4" or 1-1/4" lathers channel or 1/2" T.S. conduit.
- Recesses indoor or outdoor in covered ceilings.
- Tamperproof tools included, minimum one per ten fixtures.

UL, C-UL (Canada) Listings

- Wet, damp or dry locations, covered ceilings.
- Through-branch circuit conductors (6 #12 AWG, 90°C).

Three Year Limited Warranty

- Complete standard fixture.

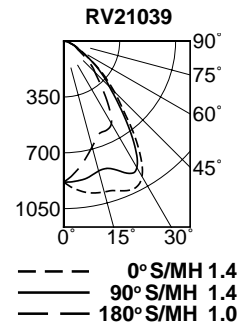
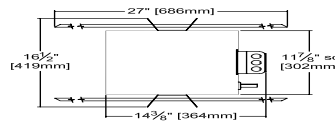
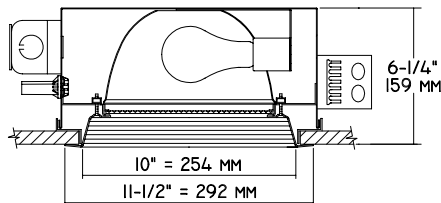
Thermal Protection (Per Current NEC)

- Thermal protector included which provides automatic cut-off if rated temperature is exceeded. (Insulation related)



Performance at a Glance

RV21039

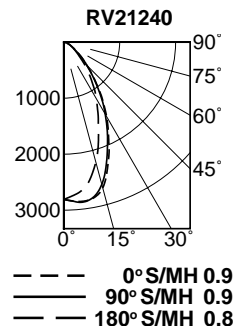
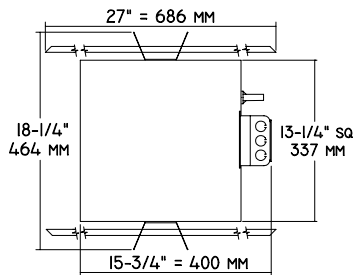
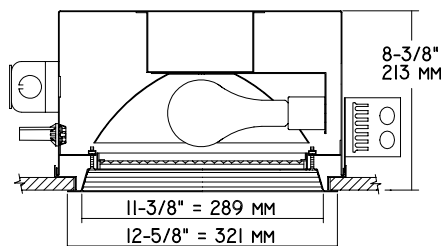


Cone of Light*

Ft.	FC	Dia.
6	24.6	8.0
8	13.8	10.7
10	8.8	13.4
12	6.1	16.0
14	4.5	18.7
16	3.5	21.4

Cone of Light Key
 Ft. Distance from fixture
 FC Footcandles (average)
 Dia. Circle of light at 50% of FC

RV21240



Cone of Light*

Ft.	FC	Dia.
6	78.0	5.4
8	43.9	7.1
10	28.1	8.9
12	19.5	10.7
14	14.3	12.5
16	11.0	14.3

* Dia. (in ft.) shown is where FC value is half the FC at nadir.

THE KIRLIN COMPANY

3401 EAST JEFFERSON AVENUE • DETROIT, MICHIGAN 48207-4232
 (313) 259-6400 • Fax: (313) 259-9409 OR (313) 259-3121 • www.kirlinlighting.com

NEW MILLENNIUM

TUNGSTEN HALOGEN and INCANDESCENT LIGHTING

LAMP

**A-21
PS-25**

MAXIMUM WATTAGE

**150
300**

CATALOG NUMBERS

**RV21039
RV21240**

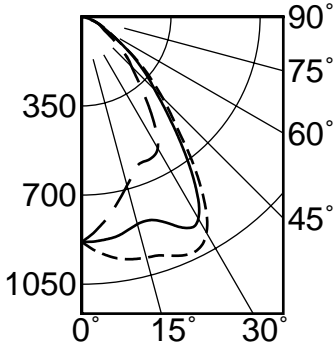
Detailed Photometry - Installed Fixture

FROM I.T.L. (BOULDER, CO) RV21039: TEST NUMBER 46997
RV21240: TEST NUMBER 46999

RV21039 150W

CANDLEPOWER DISTRIBUTION

COEFFICIENTS OF UTILIZATION



	0.0	45.0	90.0	135.0	180.0
0	884	884	884	884	884
5	934	919	881	840	825
15	979	943	843	733	686
25	1024	1076	911	714	620
35	814	897	757	573	485
45	447	480	405	330	276
55	201	220	201	162	143
65	88	105	87	90	79
75	19	24	29	31	30
85	0	0	0	0	0
90	0	0	0	0	0

RF	20					
	80			50		
	70	50	30	10	50	20
RC						
RW						
1	70	68	66	64	64	63
2	65	61	58	55	56	55
3	61	55	51	48	53	49
4	56	50	45	42	48	44
5	52	45	41	37	44	40
6	49	41	37	33	40	36
7	46	38	33	30	37	33
8	43	35	30	27	34	30
9	40	32	28	24	31	27
10	38	30	25	22	29	25

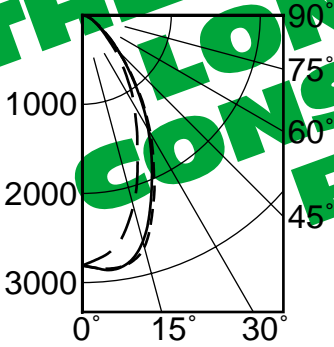
--- 0° S/MH 1.4
— 90° S/MH 1.4
- - - 180° S/MH 1.0

EFFICIENCY = 63.1%

RV21240 300W

CANDLEPOWER DISTRIBUTION

COEFFICIENTS OF UTILIZATION



	0.0	45.0	90.0	135.0	180.0
0	2808	2808	2808	2808	2808
5	2855	2886	2868	2775	2716
15	2694	2653	2628	2256	2215
25	1899	1890	1852	1606	1459
35	1176	1235	1137	1030	895
45	582	606	586	513	471
55	279	265	255	237	240
65	125	131	132	124	123
75	40	45	52	51	51
85	0	0	0	0	0
90	0	0	0	0	0

RF	20					
	80			50		
	70	50	30	10	50	30
RC						
RW						
1	61	59	58	56	56	55
2	57	54	51	49	51	49
3	53	49	46	43	47	44
4	50	45	42	39	43	40
5	47	42	38	35	40	37
6	44	39	35	32	37	34
7	42	36	32	29	35	31
8	39	33	30	27	32	29
9	37	31	27	25	30	27
10	35	29	26	23	29	25

--- 0° S/MH 0.9
— 90° S/MH 0.9
- - - 180° S/MH 0.8

EFFICIENCY = 54.3%

Options

- 40 White grooveless flare trim with regressed tempered C#73 lens overlay with 1/4" clear tempered glass below or specify optional lens.
- 45 Gasket between trim and ceiling. Stops dust streaks on ceiling.
- 46 Gasket between trim and lens.
- 58 277/120V stepdown transformer for 277 volt line input, prewired into fixture.
- 94 Custom color trim assembly. Consult factory.
- 99 Special modification. Consult factory.

SUBMITTAL DATA

APPROVAL STAMP

JOB NAME _____

TYPE _____

WATTAGE _____ VOLTAGE _____

CATALOG NUMBER _____

THESE FIXTURES ARE NO LONGER AVAILABLE FOR CONSULT FACTORIES

LIMITED WARRANTY: CATALOGED KIRLIN FIXTURES ARE WARRANTED FREE OF DEFECTS IN WORKMANSHIP OR MATERIAL FOR THREE YEARS FROM DATE OF PURCHASE. INSTALLATION, ETC., IS NORMAL USE. MANUFACTURER AT HIS OPTION WILL REPAIR OR REPLACE SUCH FIXTURE OR RETURN THE PURCHASE PRICE ON PRESENTATION OF PROOF OF PURCHASE AND DEFECTIVE FIXTURE AT THE OFFICE OF MANUFACTURER WITHIN THE YEAR OF ORIGINAL INCEPTION. LIABILITY OF MANUFACTURER IS LIMITED TO THE FOREGOING, AND MANUFACTURER SHALL NOT BE LIABLE FOR ANY OTHER DAMAGES, DIRECT OR INDIRECT, SUSTAINED OR SUFFERED BY PURCHASER OR ANY PERSON. THIS WARRANTY IS SUPPLIED FOR THE EXCLUSIVE PLACE OF ALL OTHER WARRANTIES, EXPRESS OR IMPLIED. SELLER DOES NOT WARRANT AS TO MERCHANTABILITY OR FITNESS FOR A PARTICULAR USE, NOR WILL ANY STATEMENT CONSTITUTE A WARRANTY OR AHEAD THIS SPECIFIC WARRANTY. ABNORMAL USE, ABUSE OF FIXTURE, IMPROPER INSTALLATION, OR REPAIR, OR MODIFICATION OF THE FIXTURE WITHOUT PRIOR WRITTEN AUTHORIZATION FROM THE MANUFACTURER WILL VOID THE WARRANTY. ©2004