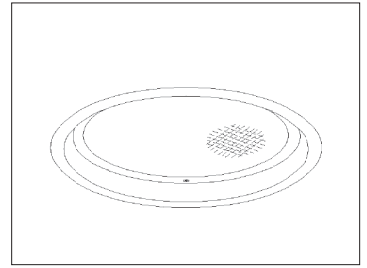


Psychiatric Rooms: Vandal Resistant Adjustable Patient Exam



Features

Lamp

- Designed for: 150 watt (max.) 120V T4Q DCB lamp (by others). Rated 1000-2000 hour life.
- 3000°K color temperature and 100 CRI for accurate tissue rendering and patient evaluation.
- Dimmable (controls by others).

Socket

- Double contact bayonet (DCB).

Lamp Assembly

- Yoke assembly tilts 30° and rotates 358°.

Reflector

- Glass cold mirrored reflector removes heat from light beam.

Trim Assembly

- Tamper resistant smooth seamless tapered white aluminum flare self-flanged trim.
- Lens combines prismatic acrylic overlay with 1/4" clear polycarbonate below for added vandal resistance. Also see Option -13.
- Flush tamperproof hex screws with center pin secure trim to captive nuts in housing.
- Continuous ring and four screws secure lens.

Housing

- Cool, acrylic enameled aluminum.
- Dissipates heat across entire surface area. Ventilated for convection cooling.
- Rustproof: Exceeds 1000 hour ASTM 5% salt spray test.
- Entire luminaire serviced through removable trim assembly.
- Built-in plaster frame.

Outlet Box

- Prewired 14 GA (NEC) galvanized steel, UL listed; with removable insulated cover.
- 1/2" and 3/4" knockouts.

Installation

- 27" galvanized hanger bars with adjustable mounting brackets supplied.
- Lightweight. Recesses in any ceiling type.

UL, C-UL (Canada) Listings

- Wet, damp or dry locations, covered ceilings.
- Through-branch circuit conductors (6 #12). Supply wire rating: 90°C.

Three Year Limited Warranty

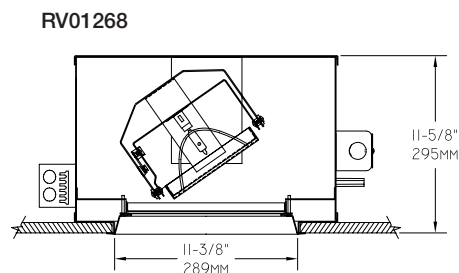
- Complete standard fixture.

Thermal Protection

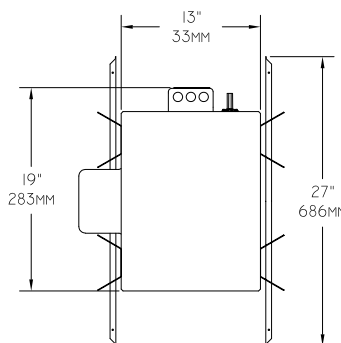
- Per current NEC.

Recessed Round
Tamperproof
Patient Exam

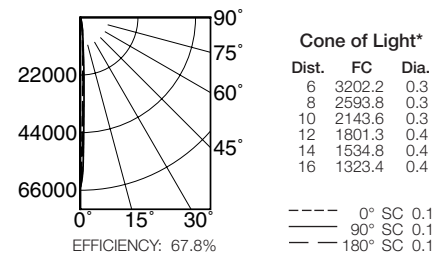
Performance at a Glance



Ceiling Cut-out
12 1/4"



KIRLIN RECOMMENDS T4 HALOGEN LAMPS BY USHIO, GE OR SYLVANIA ONLY



Cone of Light Key

- Ft. Distance from fixture
- FC Footcandles at nadir (0°)
- Dia. Circle of light at 50% of FC

* Dia. (in ft.) shown is where FC value is half the FC at nadir.

THE KIRLIN COMPANY

3401 EAST JEFFERSON AVENUE • DETROIT, MICHIGAN 48207-4232
(313) 259-6400 • Fax: (313) 259-9409 OR (313) 259-3121 • www.kirlinlighting.com

HEALTHCARE FACILITY & PATIENT LIGHTING

MAXIMUM WATTAGE

1 T4Q 150

CATALOG NUMBER

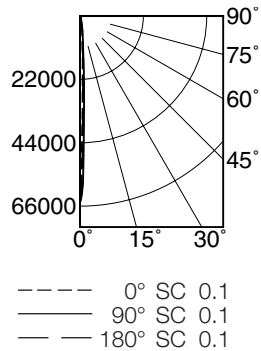
RV01268

DUE TO OUR CONTINUING EFFORT TO IMPROVE PRODUCTS, TECHNICAL INFORMATION IS SUBJECT TO CHANGE WITHOUT NOTICE.

Detailed Photometry - Installed Fixture

Photometry from I.T.L., Boulder, CO

RV01268 (150 Watt)



EFFICIENCY : 67.8%

CANDLEPOWER DISTRIBUTION					
	0.0	45.0	90.0	180.0	270.0
0	64845	64845	64845	64845	64845
5	9997	12746	13120	10871	9872
10	3749	4498	4498	3749	3749
15	1375	1499	1624	1250	1250
20	625	625	625	500	625
25	375	375	375	375	375
30	250	250	250	250	250
35	250	250	250	250	250
40	250	250	250	250	125
45	125	125	125	125	125
90	0	0	0	0	0

COEFFICIENTS OF UTILIZATION							
RF	20						
RC	80				50		
RW	70	50	30	10	50	30	10
1	78	77	76	74	73	72	71
2	76	73	71	70	70	69	67
3	73	70	68	66	68	66	65
4	71	68	65	63	66	64	62
5	69	66	63	61	64	62	60
6	68	64	61	59	62	60	58
7	66	62	59	57	61	58	57
8	64	60	57	56	59	57	55
9	63	59	56	54	58	56	54
10	62	57	55	53	57	54	53

ITL TEST #53914

Options

- 10 Tinted tempered glass lens instead; raises color temperature; reduces CRI and lumen output.
- 15 Prismatic C#73 flat glass lens instead. Broadens illumination distribution.
- 32 Trim extender. Broadens trim flange by 1" to cover larger ceiling opening.
- 44 Black OptiGroove regressed trim assembly instead; with clear lens or add optional lens. White flange. Also see Option -94.
- 45 Gasket between trim flange and ceiling. (Minimizes dust streaks on ceiling.)
- 46 Gasket between lens and trim. Minimizes contaminant and dust entry.
- 58 277/120 volt stepdown transformer for 277 volt line input, prewired into each fixture; with 277 volt thermal protector.
- 94 Custom color self-flanged smooth flare trim. Consult factory.
- 97 For other input supply voltages, consult factory.
- 99 Special modification. Consult factory.
- LP With tungsten halogen lamp. Specify 150 watt T4Q.
- TA Top access. For servicing from above ceiling.
- TC Teflon coated safety lens; retains glass particles in event of breakage.

SUBMITTAL DATA

JOB NAME

TYPE

WATTAGE

VOLTAGE

CATALOG NUMBER

APPROVAL STAMP

LIMITED WARRANTY: CATALOGED KIRLIN FIXTURES ARE WARRANTED FREE OF DEFECTS IN WORKMANSHIP OR MATERIAL FOR THREE YEARS FROM DATE OF PURCHASE. INSTALLLED TO N.E.C. IN NORMAL USE. Manufacturer at the option will replace or repair each fixture or refund the purchase price on presentation of proof of purchase and defective fixture at the office of manufacturer within three years of original shipment. Liability of manufacturer is limited to the foregoing, and manufacturer shall not be liable for any other damages, direct or indirect, sustained or suffered by purchaser or any person. This warranty is supplied to the buyer in place of all other warranties, expressed or implied. Seller does not warrant as to merchantability or fitness for a particular use, nor will any oral statement constitute a warranty or amend this specific warranty. Abnormal use, abuse of the fixture, improper installation, or repair, or modification of the fixture without prior written authorization from the manufacturer will render the warranty void.