

MEDICAL EXAM LIGHT: Asymmetric Exam Lighting

Features

Lamp Assembly

- Designed for: 250 watt (maximum) 2000 hour tungsten halogen T-4 lamp (by others).
- 3000°K color temperature and 100 CRI for accurate tissue rendering and patient evaluation.
- Double contact bayonet base (DCB) socket.
- Offset mounted for asymmetric distribution.

Reflector

- Ellipsoidal specular Alzak® aluminum.

Trim Assembly

- Recessed into housing at 30°.
- Cast aluminum trim frame with baked white enamel finish.
- Hinged formed steel door with captive thumbscrew. Baked white enamel finish.
- Clear tempered fresnel lens.
- Smooth door surface prevents contaminant or dust build-up. Easily cleaned.

Housing

- Black enameled 20 gauge steel.
- Entire luminaire serviced through removable trim assembly.
- Built-in plaster frame.

Outlet Box

- Prewired 14GA (NEC) galvanized steel, UL listed, with removable insulated cover.
- 1/2" and 3/4" knockouts.

Installation

- 27" galvanized hanger bars supplied (2).

- Fully adjustable universal mounting brackets supplied (4).
- Recesses indoor or outdoor in covered locations.

UL, C-UL (Canada) Listings

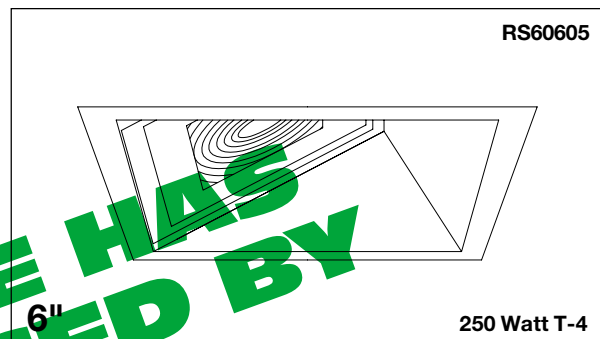
- Wet, damp or dry locations, covered ceilings.
- Through-branch circuit conductors (6#12) Supply wire rating - 90°C.

Three Year Limited Warranty

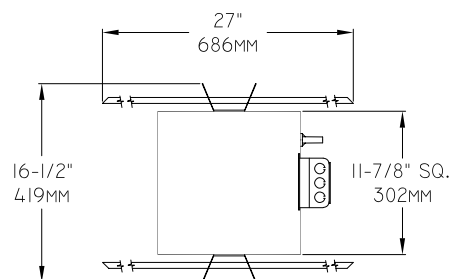
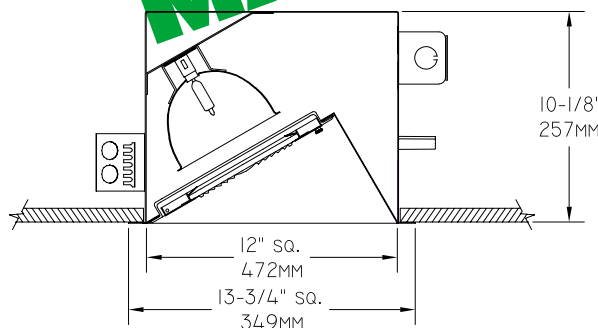
- Complete standard fixture.

Thermal Protection

- Per current NEC.



Dimensions – Installed Fixture



Options

- 35 Silver enameled frame and door finish instead.
- 37 Dark Bronze enameled frame and door finish instead.

- 38 Black enameled frame and door finish instead.
- 45 Gasket between trim frame and ceiling. (Minimizes dust streaks on ceiling.)
- 46 Gasket between lens and door. Minimizes contaminant and dust entry.

- 94 Custom color frame and door. Consult factory.
- 99 Special modification. Consult factory.
- LP With lamp. 250 watt frosted T-4 DCB base tungsten halogen. 2000 hour life rating.

THE KIRLIN COMPANY

3401 EAST JEFFERSON AVENUE • DETROIT, MICHIGAN 48207-4232
(313) 259-6400 • Fax: (313) 259-9409 OR (313) 259-3121 • www.kirlinlighting.com

MAXIMUM WATTAGE

CATALOG NUMBER

**TUNGSTEN HALOGEN
HEALTHCARE FACILITY LIGHTING**

250 Watt T-4

RS60605

DUE TO OUR CONTINUING EFFORT TO IMPROVE PRODUCTS, TECHNICAL INFORMATION IS SUBJECT TO CHANGE WITHOUT NOTICE.

Alzak® is a registered trademark of ALCOA.

RS60605

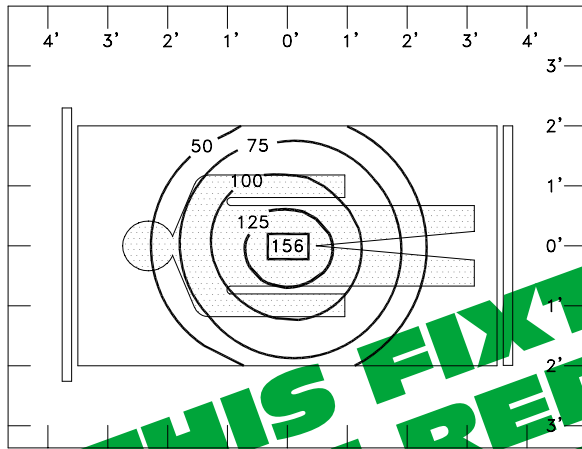
RECESSED ROUND: 250 WATT T-4 TUNGSTEN HALOGEN

KIRLIN

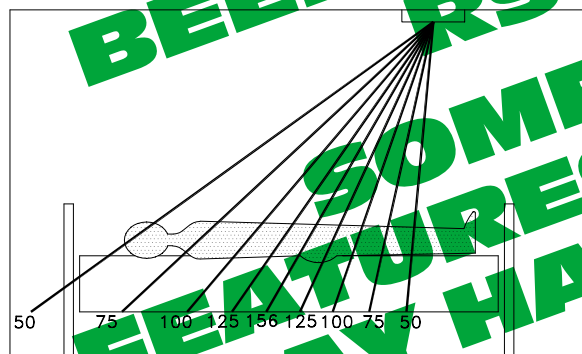
Footcandle Distribution Data

FROM I.T.L. (BOULDER, CO) TEST NUMBER 00000

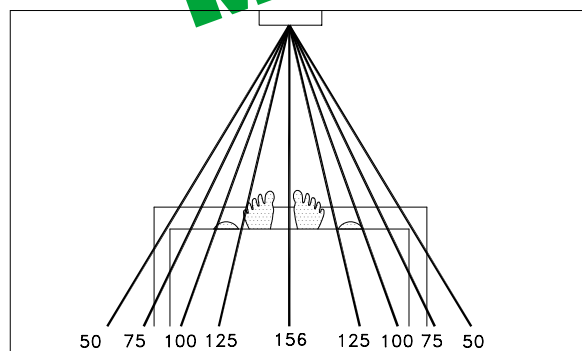
PLAN VIEW CEILING HEIGHT 8' • WORK PLANE 3'6"



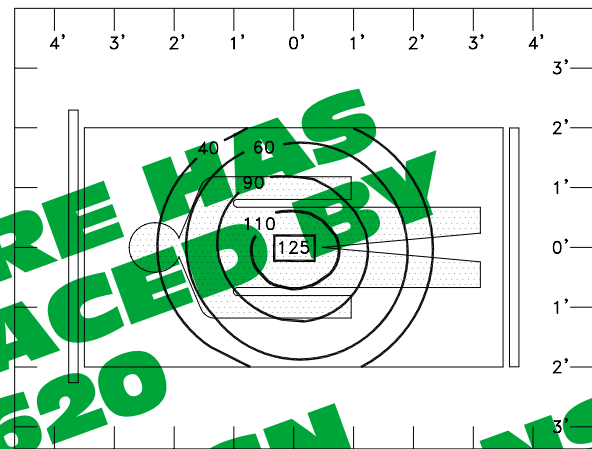
SIDE VIEW



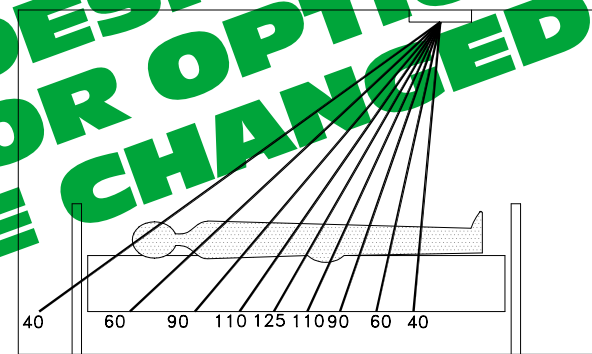
FRONT VIEW



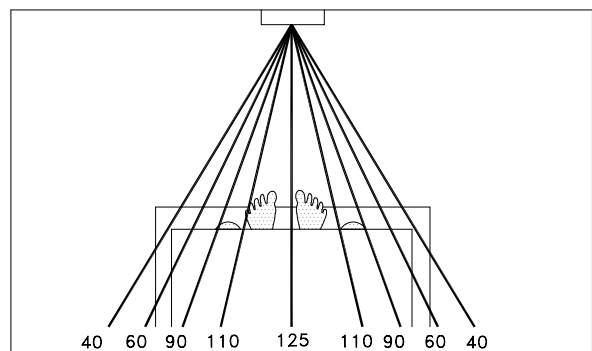
PLAN VIEW CEILING HEIGHT 8'6" • WORK PLANE 3'6"



SIDE VIEW



FRONT VIEW



- Notes:
1. All lighting levels are expressed in footcandles, with distances expressed in feet, as measured at the work plane (3'6").
 2. The work plane (3'6") is defined as: examination bed height, plus patient body depth.
 3. Fixture is centered over examination bed with its longest axis parallel to the length of the bed.

SUBMITTAL DATA

JOB NAME _____

TYPE _____

WATTAGE _____ VOLTAGE _____

CATALOG NUMBER _____

APPROVAL STAMP

LIMITED WARRANTY: CATALOGED KIRLIN FIXTURES ARE WARRANTED FREE OF DEFECTS IN WORKMANSHIP OR MATERIAL FOR THREE YEARS FROM DATE OF PURCHASE. INSTALLATION, E.C., IN NORMAL USE. Manufacturer at this option will replace or repair such fixture or refund the purchase price on presentation of proof of purchase and defective fixture at the offices of manufacturer within the three years of original shipment. Liability of manufacturer is limited to the foregoing, and manufacturer shall not be liable for any other damages, direct or indirect, sustained or incurred by purchase or any person. This warranty is supplied for the buyer in place of all other warranties, expressed or implied. Seller does not warrant as to merchantability or fitness for a particular use, nor will any oral statement constitute a warranty or amend this specific warranty. Abnormal use, abuse of the fixture, improper installation, or repair or modification of the fixture without prior written authorization from the manufacturer will void this warranty void.