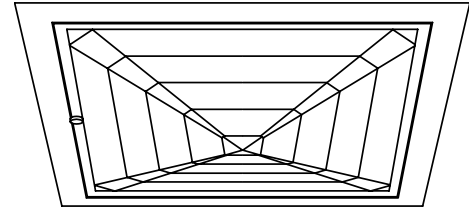


10"

PRISMATIC KIRLIN LENS: UL LISTED WET LOCATIONS



Features

Lamp

- 100 watt clear E/ED-17 vertical.
- See Option -43 for optional lower wattage.
- Option -23 for Mercury, Option -24 for HPS.

Socket

- Vertical. Medium base. Pulse rated.
- Glazed porcelain.
- Nickel-plated brass screw shell. Silicone leads.

Reflector

- GlasSurfaced™ multi-faceted specular aluminum.

Trim Assembly

- UV absorbing tempered prismatic shock-resisting spread Kirlin lens.
- UV absorbing tempered low brightness prismatic flat glass available (Option -15).
- Rust-free polished nickel stainless door (304-L) and captive thumb screw. Slender with concealed hinges for fast relamping.
- Attractively beveled cast aluminum frame tooled to ensure close fit with door. White acrylic finish.
- Drop Holophane tempered lens available (Option -DH).

Ballast Assembly

- WhisperPack™ fully encapsulated 180°C rated HPF ballast.
- Premium Class H high reactance with 5:12 regulation.
- Capacitor and ignitor supplied.
- 120 volt standard or see optional voltages.
- Cool, quiet, long-life. Silicone leads.

- Visible and easily serviced in all ceilings including dry wall.

Fuse

- Fused primary. Renewable. Aids servicing.

Housing

- Acrylic enameled aluminum.
- Cool: Dissipates heat across entire surface area.
- Rustproof: Exceeds 1000 hour ASTM 5% salt spraytest.
- Entire luminaire serviced through removable trim assembly.

Outlet Box

- Prewired 14 GA (NEC) galvanized steel, UL listed.
- Removable insulated cover.
- 1/2" and 3/4" knockouts.

Installation

- 27" galvanized channel bar hangers supplied (2).
- Fully adjustable universal mounting brackets supplied (2).
- Recesses indoor or outdoor in covered locations.

UL Listing

- Wet, damp or dry locations, covered ceilings.
- Through-branch circuit conductors (6 #12).

Three Year Limited Warranty

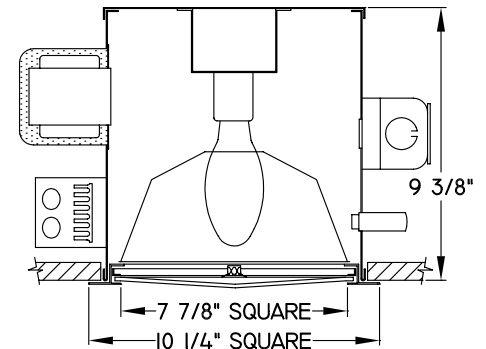
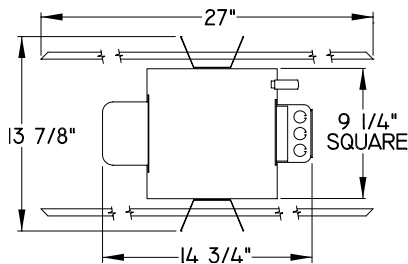
- Complete standard fixture.

Thermal Protection

- Per current NEC.

THIS FIXTURE IS NOT COMPATIBLE FOR REPLACEMENT

APPROVAL STAMP



THE KIRLIN COMPANY

3401 EAST JEFFERSON AVENUE ■ DETROIT, MICHIGAN 48207-4232
(313) 259-6400 ■ FAX: (313) 259-9409 OR (313) 259-3121

**HIGH EFFICIENCY
METAL HALIDE LIGHTING**

LAMP
E/ED-17

WATTAGE
100

RS51060

DATA

SUBMITTAL

VOLTAGE

WATTAGE

TYPE

MODEL

JOB NAME

LOCATION

RS51060 RECESSED SQUARE: 100 WATT MEDIUM BASE METAL HALIDE



Performance at a Glance - Installed Fixture

RS51060

Ft.	FC	DIA.
6	104.4	4.7
8	58.7	6.2
10	37.6	7.8
12	26.1	9.3
14	19.2	10.9
16	14.7	12.4

RS51060-15

Ft.	FC	DIA.
6	104.3	5.9
8	58.7	7.9
10	37.6	9.9
12	26.1	11.9
14	19.2	13.9
16	14.7	15.8

RS51060-DH

Ft.	FC	DIA.
6	158.4	3.0
8	89.1	4.0
10	57.0	5.0
12	39.6	6.0
14	29.1	7.0
16	22.3	8.1

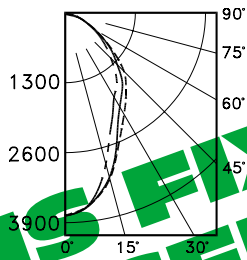
Cone of Light Key
Ft. Distance to surface from fixture (mounting height)
FC Footcandles
DIA. Diameter (in feet) of the circle of light when FC value is half the FC at nadir.

SINGLE FIXTURE

Photometric Data - Installed Fixture

RS51060

— 0° S/MH 0.9
 - - - 45° S/MH 0.9
 - - - 90° S/MH 0.9
 EFF. = 65.4%



CANDLEPOWER DISTRIBUTION

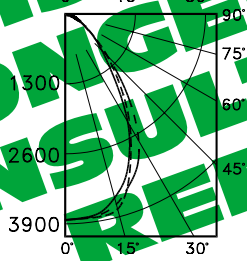
	0.0	22.5	45.0	67.5	90.0
0	3758	3758	3758	3758	3758
5	3649	3634	3634	3650	3660
15	3102	2978	2862	2993	3137
25	2278	2188	2015	2191	2394
35	1807	1698	1629	1794	1926
45	1378	1194	1172	1279	1521
55	824	666	754	708	882
65	400	348	443	373	438
75	156	150	205	163	174
85	29	34	44	35	33
90	3	3	3	3	3

COEFFICIENT OF UTILIZATION

RF	20				
	70	50	30	10	50
1	72	70	68	66	66
2	67	62	59	55	59
3	62	56	51	48	53
4	57	51	46	42	48
5	53	46	41	37	44
6	50	42	37	33	40
7	46	39	33	30	37
8	44	36	31	27	34
9	41	33	28	25	32
10	39	31	26	23	30

RS51060-15

— 0° S/MH 1.0
 - - - 45° S/MH 1.0
 - - - 90° S/MH 1.0
 EFF. = 65.4%

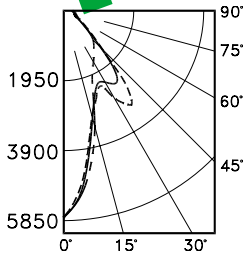


	0.0	22.5	45.0	67.5	90.0
0	3756	3756	3756	3756	3756
5	3738	3754	3754	3762	3752
15	3434	3463	3540	3603	3650
25	2728	2858	3059	2978	2792
35	1710	1847	2065	2023	1827
45	899	991	1043	1074	937
55	468	501	472	542	438
65	227	241	251	250	218
75	122	129	140	131	132
85	45	50	49	52	44
90	0	0	0	0	0

RF	20				
RC	80				
RW	70	50	30	10	50
1	73	70	68	66	66
2	68	64	60	57	60
3	63	58	54	50	55
4	59	53	48	45	51
5	55	48	44	40	46
6	52	45	40	36	43
7	49	41	36	33	40
8	46	38	34	30	37
9	43	36	31	28	35
10	41	33	29	26	32

RS51060-DH

— 0° S/MH 0.5
 - - - 45° S/MH 1.0
 - - - 90° S/MH 0.5
 EFF. = 65.6%



	0.0	22.5	45.0	67.5	90.0
0	5701	5701	5701	5701	5701
5	5263	5291	5313	5250	5191
15	2952	2886	3352	3032	2922
25	2207	1939	1847	2048	2379
35	2526	1549	1409	1579	3131
45	1171	753	872	767	1140
55	439	424	483	442	486
65	320	327	333	355	354
75	266	276	251	298	279
85	168	186	173	204	169
90	114	140	134	141	110

RF	20				
RC	80				
RW	70	50	30	10	50
1	71	68	66	63	63
2	66	61	57	54	57
3	61	55	51	47	52
4	57	50	45	41	47
5	53	46	41	37	43
6	50	42	37	34	40
7	47	39	34	31	37
8	44	36	31	28	35
9	42	34	29	26	33
10	39	32	27	24	31

Options

- 15 UV absorbing tempered low brightness prismatic flat glass instead.
- 23 Mercury ballast instead. 100ME standard or see Option -43. Specify voltage.
- 24 HPS ballast instead. 100ME standard or see Option -43. Specify voltage.
- 26 Tamper-proof recessed hex, center pin, button door screw with key. One key provided per ten fixtures. See also -27.
- 27 Clear 1/4" tempered glass beneath prismatic flat lens, for vandal resistance. Also see Option -26.
- 29 White Son ballast instead. For ED-17 medium base lamp. 100 watt standard in 120 volt only. Consult factory for 277 volt.
- 35 Silver enameled frame finish instead.
- 36 Gold enameled frame finish instead.
- 37 Bronze enameled frame finish instead.
- 38 Black enameled frame finish instead.
- 43 Lower wattage medium base - specify voltage and wattage for: Metal Halide: 70, 50; Mercury: 75, 50; HPS: 70, 50, 35; White Son: 50.
- 45 Gasket above trim flange (between trim and ceiling).
- 46 Gasket between trim and lens.
- 47 Aluminum installation frame for wet plaster ceiling.
- 49 Extra circuit DCB socket. (100 watt max.) Must not be energized simultaneously with main source.
- 58 277 volt 60 Hz. ballast instead.
- 65 Relay and DCB socket. (100 watt max.) With fixture energized, provides immediate light during HID outage.
- 66 Also see Option -66. Time delay relay and DCB socket. (100 watt max.) When energized, provides light until HID reaches 70% output.
- 94 Custom color frame. Consult factory.
- 97 Other voltage ballasts. Consult factory.
- 99 Special modification. Consult factory.
- DH Drop Holograph tempered lens instead.
- LP With lamp. Specify source, wattage, color temperature, and clear or coated (3200°K standard for 100MH). Consult factory for other color temperatures.
- LS With tungsten halogen standby lamp. (100 watt max.) Use only with Options -49, -65 or -66.

THE KIRLIN COMPANY

3401 EAST JEFFERSON AVENUE ■ DETROIT, MICHIGAN 48207-4232
 (313) 259-6400 ■ FAX: (313) 259-9409 OR (313) 259-3121

RS51060

WATTAGE 100 LAMP E/ED-17

HIGH EFFICIENCY METAL HALIDE LIGHTING

LIMITED WARRANTY: CATALOGUED KIRLIN FIXTURES ARE WARRANTIED FREE OF DEFECTS IN WORKMANSHIP OR MATERIAL FOR THREE YEARS FROM DATE OF PURCHASE. INSTALLLED TO N.E.C. IN NORMAL USE. Manufacturer at his option will replace or repair such fixture or refund the purchase price on presentation of proof of purchase and defective fixture at the offices of manufacturer within three years of original shipment. Liability of manufacturer is limited to the foregoing, and manufacturer shall not be liable for any other damages, direct or indirect, sustained or suffered by purchaser or sufferer of this warranty is supplied to the buyer in place of all other warranties, expressed or implied. Seller does not warrant as to merchantability or fitness for a particular use, nor will any oral statement constitute a warranty or amend this specific warranty. Abnormal use, abuse of the fixture, improper installation, or repair, or modification of the fixture without prior written authorization from the manufacturer will render the warranty void.