

### Triple Tube Amalgam Downlights - Type IC

#### Features

##### Lamp

- Designed for:
  - 1 vertical Triple Tube 32 watt.
- 4 pin GX24q-3base.
- 90% lumen output maintained at ballast minimum operating temperature.
- Flicker-free starting, high light output, excellent color rendering (82 CRI).
- High efficiency with low operating costs.
- See Option -43 for lower wattage.

##### Ballast

- Regulating electronic high power factor, thermally protected, encased. -10°C (13°F) rated. THD is less than 10%.
- Built-in RIF filter.
- 120 volt standard or see optional voltages.
- Dimming optional. (See Option -39)
- Visible and easily serviced in all ceilings.

##### Fuse

- Available as Option -FS.

##### Reflector

- RR90733: Self-flanged clear specular Alzak® upper reflector with low iridescence specular Alzak® lower cone. Optional SoftTex softly etched Clear, Dune, Champagne Gold or Wheat; all White, Black Specular Alzak or OptiGroove lower reflectors available.
- RR90934: Self-flanged low iridescence clear specular Alzak® reflector. Optional

SoftTex softly etched Clear, Dune, Champagne Gold or Wheat reflectors or OptiGroove insert available.

##### Housing

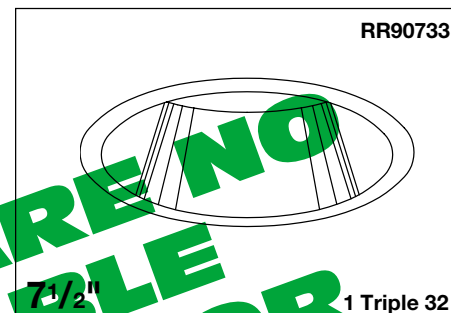
- Acrylic enameled aluminum.
- Cool: Dissipates heat across entire surface area. Ventilated.
- Rustproof: Exceeds 1000 hour ASTM 5% salt spray test.
- Entire luminaire serviced through removable reflector.
- Prewired outlet box: 14GA (NEC) galvanized steel. UL listed. Accessible through fixture opening.
- Built-in plaster frame.

##### Installation

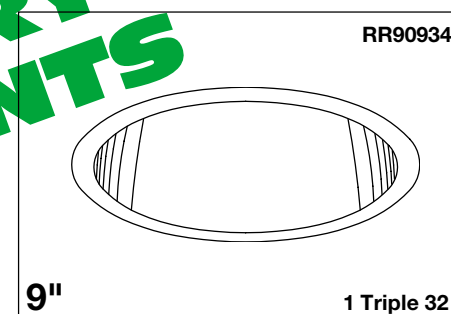
- 27" hanger bars supplied (2).
  - Fully adjustable universal mounting brackets supplied (2).
  - Reflector and socket bracket adjust as unit for ease of installation. (RR90934)
  - Recesses indoor or outdoor in covered locations.
- UL, C-UL (Canada) Listings**
- Wet, damp or dry locations, covered ceilings.
  - Through-branch circuit conductors (6 #12).
  - Type IC - Approved for direct contact with insulation.

##### Three Year Limited Warranty

- Complete standard fixture.



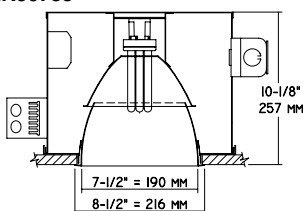
**Dual Reflector Design**  
**Six Optional Finishes**



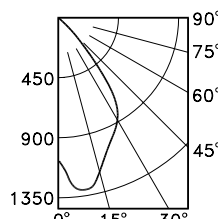
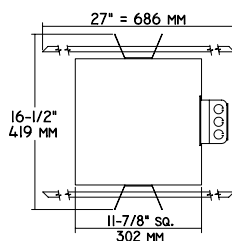
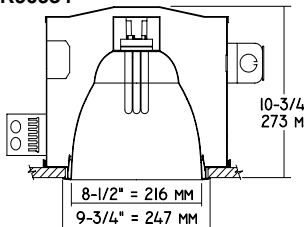
**77% Efficiency**  
**Dimming Optional**

#### Performance at a Glance

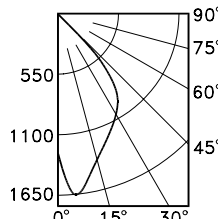
RR90733



RR90934



RR90733 S/MH 1.2



RR90934 S/MH 1.2

**Cone of Light\***

Ft.	FC	Dia.
6	29.1	6.7
8	16.3	9.0
10	10.5	11.2
12	7.3	13.4
14	5.3	15.7
16	4.1	17.9

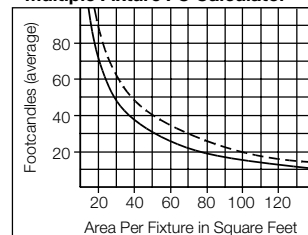
RR90733

**Cone of Light\***

Ft.	FC	Dia.
6	36.0	6.4
8	20.2	8.6
10	12.9	10.7
12	9.0	12.8
14	6.6	15.0
16	5.1	17.1

RR90934

**Multiple Fixture FC Calculator\*\***



RR90733 ——— RR90934 - - - -

#### Cone of Light Key

- Ft. Distance from fixture
- FC Footcandles (average)
- Dia. Circle of light at 50% of FC

\* Dia. (in ft.) shown is where FC value is half the FC at nadir.  
\*\* Based on RCR2; ceiling 70%; wall 50%; floor 20%. Use S/MH shown for each fixture.

## THE KIRLIN COMPANY

3401 EAST JEFFERSON AVENUE • DETROIT, MICHIGAN 48207-4232  
(313) 259-6400 • Fax: (313) 259-9409 OR (313) 259-3121

**CENTURY SERIES**  
**ARCHITECTURAL**  
**COMPACT FLUORESCENT LIGHTING**

MAXIMUM WATTAGE

**1 Triple 32**  
**1 Triple 32**

CATALOG NUMBERS

**RR90733**  
**RR90934**

THE KIRLIN COMPANY RESERVES THE RIGHT TO CHANGE, WITHOUT NOTICE, DETAILS OR SPECIFICATIONS IN PRODUCT DESIGN.

Alzak® is a registered trademark of ALCOA.

## Detailed Photometry - Installed Fixture

FROM I.T.L. (BOULDER, CO) RR90733: TEST NUMBER 42378  
RR90934: TEST NUMBER 41574

## RR90733

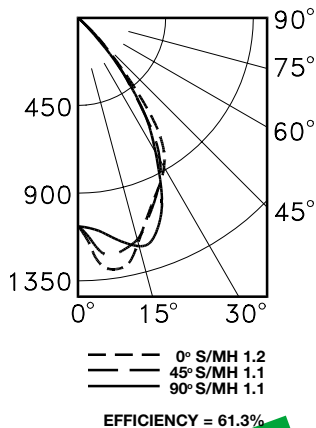
\*LER = 37.9  
•AEC = \$6.33

## CANDLEPOWER DISTRIBUTION

	0.0	22.5	45.0	67.5	90.0
0	1046	1046	1046	1046	1046
5	1207	1191	1154	1094	1079
15	1196	1201	1170	1185	1221
25	969	1004	958	959	959
35	687	687	613	646	610
45	240	232	191	234	226
55	7	7	7	8	9
65	2	2	2	2	2
75	0	2	2	2	2
85	0	0	0	0	0
90	0	0	0	0	0

## COEFFICIENTS OF UTILIZATION

RF	20					
RC	80			50		
RW	70	50	30	10	50	10
1	69	68	66	65	64	62
2	66	62	60	58	59	56
3	62	59	55	52	55	51
4	59	54	50	47	52	46
5	55	50	46	43	48	42
6	52	46	42	39	45	39
7	49	43	39	36	42	36
8	47	40	36	34	39	33
9	44	38	34	31	37	31
10	42	35	32	29	35	29



## RR90934

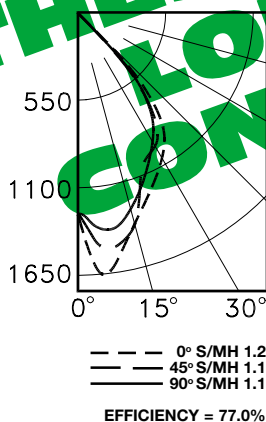
\*LER = 67.4  
•AEC = \$3.56

## CANDLEPOWER DISTRIBUTION

	0.0	22.5	45.0	67.5	90.0
0	1295	1295	1295	1295	1295
5	1610	1567	1471	1380	1381
15	1352	1390	1362	1283	1301
25	1111	1147	997	1064	1027
35	919	914	840	914	777
45	405	404	391	411	418
55	1	2	1	1	2
65	1	2	1	1	2
75	0	1	0	1	2
85	0	0	0	0	0
90	0	0	0	0	0

## COEFFICIENTS OF UTILIZATION

RF	20					
RC	80			50		
RW	70	50	30	10	50	10
1	87	85	83	81	80	77
2	82	78	75	72	74	70
3	78	72	68	65	69	63
4	73	67	62	58	64	57
5	69	62	57	53	59	52
6	65	57	52	48	55	48
7	61	53	48	44	52	44
8	58	49	44	41	48	41
9	54	46	41	38	45	38
10	51	43	38	35	42	35



## Options

- 30 White self-flanged lower reflector (RR90733). (CP x .90)
- 31 White flange (only) on (lower) reflector.
- 32 Trim extender. Broadens trim flange O.D. by 1" to cover larger ceiling opening.
- 39 Installed electronic dimming ballast for 32 watt. Consult factory for 18 or 26 watt or for quantity and type required. Also see Options -LE and -WD. Indoor use.
- 43 Lower wattage triple tube: Specify 1-18 or 1-26 watt.
- 45 Gasket above reflector flange. Stops dust streaks on ceiling.
- 58 277 volt 60 Hz. ballast instead.
- 70 SoftTex Clear softly etched self-flanged

- (lower) reflector. Resists smudges. (CP x .93)
- 71 SoftTex Dune softly etched self-flanged (lower) reflector. Resists smudges. (CP x .87)
- 72 Black Alzak self-flanged lower reflector (RR90733). (CP x .65)
- 73 Internal emergency "Ni-Cad" battery pack concealed in housing. Switch and light unobtrusively located inside (upper) reflector. For indoor use.
- 79 Extension collar for up to 2" thick ceilings.
- 82 Sloped ceiling adapter. Specify slope up to 30° in 5° increments.
- 90 SoftTex Champagne Gold softly etched self-flanged (lower) reflector. Resists smudges. (CP x .90)
- 91 SoftTex Wheat softly etched self-flanged (lower) reflector. Resists smudges. (CP x .87)
- 94 Specular Pewter or Umber or other specified

- custom color self-flanged (lower) reflector. Consult factory.
- 97 Other voltage ballast. Consult factory.
- 98 347 volt 60 Hz. ballast instead. Consult factory for dimming.
- 99 Special modification. Consult factory.
- CW Cold weather electronic HPF ballast. -18°C to -20°C (0°F to -5°F).
- FS Fused. Replaceable. Aids servicing.
- LE With 4-pin electronic Triple Tube amalgam lamp. 82 CRI and 10,000 hour life. 3500°K or consult factory for 2700°K, 3000°K, 4100°K. Specify wattage and color temperature.
- OG OptiGroove black seamless tapered aluminum lower cone / assembly. White trim, self-flanged. (RR90733: CP x .70; RR90934: x .75)
- WD Wall Dimmer for use with Option -39. Consult factory for use with 18 or 26 watt.

## SUBMITTAL DATA

## APPROVAL STAMP

JOB NAME \_\_\_\_\_

TYPE \_\_\_\_\_

WATTAGE \_\_\_\_\_ VOLTAGE \_\_\_\_\_

CATALOG NUMBER \_\_\_\_\_

LIMITED WARRANTY: CATALOGUED KIRLIN FIXTURES ARE WARRANTED FREE OF DEFECTS IN WORKMANSHIP OR MATERIAL FOR THREE YEARS FROM DATE OF PURCHASE. INSTALLATION, ETC., IS NOT INCLUDED. THE PURCHASER'S PLACE OF PURCHASE AND DEFECTIVE FIXTURE AT THE OFFICE OF THE MANUFACTURER WITHIN THREE YEARS OF ORIGINAL SHIPMENT. LIABILITY OF MANUFACTURER IS LIMITED TO THE FOREGOING, AND MANUFACTURER SHALL NOT BE LIABLE FOR ANY OTHER DAMAGES, DIRECT OR INDIRECT, SUSTAINED BY PURCHASER OR ANY PERSON. THIS WARRANTY IS SUPPLIED TO THE PURCHASER IN PLACE OF ALL OTHER WARRANTIES, EXPRESSED OR IMPLIED. SELLER DOES NOT WARRANT AS TO MERCHANTABILITY OR FITNESS FOR A PARTICULAR USE, NOR WILL ANY STATEMENT CONSTITUTE A WARRANTY OF FITNESS FOR A PARTICULAR USE. CONSULT FACTORY FOR MORE INFORMATION.