

1100 Candlepower with Type IC

Features

Lamp

- Designed for 1 vertical Quad 26 watt.
- 2 pin G24d-3 base.
- See Option -43 for lower wattage.

Ballast

- Thermally protected, encased and potted standard.
- High power factor standard.
- 120 volt standard or see optional voltages.
- Dimming optional (see Option -39)
- Electronic ballast (see Option -96)
- Visible and easily serviced in all ceiling locations.

Fuse

- Available as Classon S.

Reflector

- Self-flanged low iridescence Alzak® aluminum reflector curved.
- OptiGroove® optically etched Clear, Champagne Gold or available.
- Optional OptiGroove assembly available.

Housing

- Acrylic enameled aluminum.

- Cool: Dissipates heat across entire surface area. Ventilated.
- Rustproof: Exceeds 1000 hour ASTM 5% salt spray test.
- Entire luminaire section is removable for easy service.
- Protection to 14GA (NEC approved) galvanneel. UL listed for use through fixture opening.
- Built-in thermal protection.

Installation

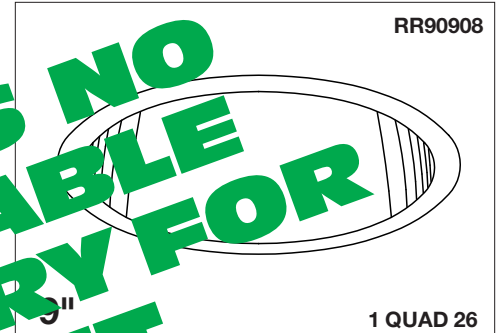
- 1/2" hanger bars supported (2).
- Fully adjustable universal mounting bracket (see Option -10).
- Reflector and socket bracket are a unit for ease of installation.
- Recessed into ceiling or floor in covered location.

UL (Canada) Listings

- Wet, damp or dry locations, covered ceilings.
- Through-branch circuit conductors (6 #12).
- Type IC - Approved for direct contact with insulation.

Three Year Limited Warranty

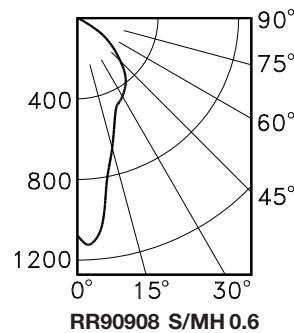
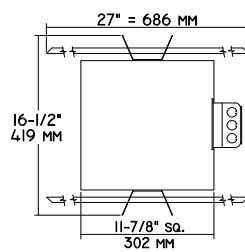
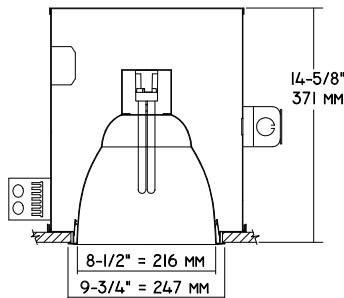
- Complete standard fixture.



THIS FIXTURE IS NO LONGER AVAILABLE FOR CONSULT FACTORY REPLACEMENT

Performance at a Glance

RR90908

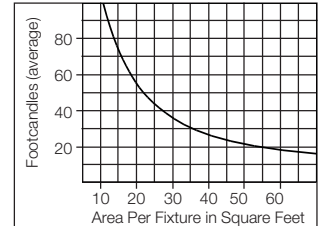


Cone of Light*

Ft.	FC	Dia.
6	28.2	3.4
8	15.9	4.5
10	10.2	5.6
12	7.1	6.8
14	5.2	7.9
16	4.0	9.0

RR90908

Multiple Fixture FC Calculator**



RR90908

Cone of Light Key

- Ft.** Distance from fixture
- FC** Footcandles (average)
- Dia.** Circle of light at 50% of FC

* Dia. (in ft.) shown is where FC value is half the FC at nadir.
 ** Based on RCR2: ceiling 70%; wall 50%; floor 20%. Use S/MH shown for each fixture.

THE KIRLIN COMPANY

3401 EAST JEFFERSON AVENUE • DETROIT, MICHIGAN 48207-4232
 (313) 259-6400 • Fax: (313) 259-9409 OR (313) 259-3121

**CENTURY SERIES
 ARCHITECTURAL
 COMPACT FLUORESCENT LIGHTING**

MAXIMUM WATTAGE

CATALOG NUMBER

1 Quad 26

RR90908

THE KIRLIN COMPANY RESERVES THE RIGHT TO CHANGE, WITHOUT NOTICE, DETAILS OR SPECIFICATIONS IN PRODUCT DESIGN.

Alzak® is a registered trademark of ALCOA.

Detailed Photometry - Installed Fixture

FROM I.T.L. (BOULDER, CO) TEST NUMBER 41106

RR90908

*LER = 33.2
•AEC = \$7.23



Estimated Multipliers

- 70 SofTex Clear: CP x .93
- 71 SofTex Dune: CP x .87
- 90 SofTex Champagne Gold: CP x .90
- 91 SofTex Wheat: CP x .87
- OG Black OptiGroove: CP x .75

CANDLEPOWER DISTRIBUTION

	0.0	22.5	45.0	67.5	90.0
0	1016	1016	1016	1016	1016
5	1045	1041	1038	1023	1011
15	659	622	580	608	640
25	476	487	432	478	469
35	407	423	390	410	417
45	283	292	280	280	277
55	159	168	168	168	166
65	44	47	47	51	53
75	0	0	0	0	0

COEFFICIENT OF UTILIZATION

RW	50	10	50	30	10
1	70	68	66	64	63
2	67	63	60	57	55
3	62	57	53	49	48
4	58	52	47	44	43
5	54	47	42	39	38
6	50	43	38	35	34
7	47	40	35	31	31
8	44	37	32	29	28
9	41	34	29	26	26
10	39	32	27	24	24

* LER = Luminaire Efficiency Ratio
LER = Luminaire Effic. x Total Lamp Lumens
Input Watts

• AEC = Annual Energy Cost per
1000 lumens (based on 3000
hours use @ \$0.08 KWH).

LIMITED WARRANTY: CATALOGUED KIRLIN FIXTURES ARE WARRANTED FREE OF DEFECTS IN WORKMANSHIP OR MATERIAL FOR THREE YEARS FROM DATE OF PURCHASE. INSTALLATION, MAINTENANCE, AND REPAIRS ARE THE RESPONSIBILITY OF THE USER. THE MANUFACTURER SHALL NOT BE LIABLE FOR ANY OTHER DAMAGES, DIRECT OR INDIRECT, SUSTAINED OR SUFFERED BY PURCHASER OR ANY PERSON. THIS WARRANTY IS SUPPLIED FROM THE MANUFACTURER AND WILL NOT BE VALID WITHOUT THE MANUFACTURER'S AUTHORIZATION.

THIS FIXTURE IS NO LONGER AVAILABLE FOR CONSULT FACTORY REPLACEMENT

Options

- 31 White reflector trim, self-flanged.
- 32 Trim extender. Broadens trim flange O.D. by 1" to cover larger ceiling opening.
- 39 Installed electronic dimming ballast. Consult factory for Q13 watt or quantity and type required. Also see -LE and -WD.
- 43 Lower wattage: Specify 1Q18 or 1Q13.
- 45 Gasket above reflector flange. Stops dust streaks on ceiling.
- 58 277 volt 60 Hz. ballast instead.
- 70 SofTex Clear softly etched self-flanged reflector. Resists smudges. (CP x .93)
- 71 SofTex Dune softly etched self-flanged reflector. Resists smudges. (CP x .87)
- 73 Internal emergency "Ni-Cad" battery pack concealed in housing. Switch and light unobtrusively located inside reflector. For indoor use.
- 79 Extension collar for up to 2" thick ceilings.
- 82 Sloped ceiling adapter. Specify slope up to 30° in 5° increments.
- 90 SofTex Champagne Gold softly etched self-flanged reflector. Resists smudges. (CP x .90)
- 91 SofTex Wheat softly etched self-flanged reflector. Resists smudges. (CP x .87)
- 94 Specular Pewter or other specified custom color self-flanged reflector. Consult factory.
- 96 Regulating electronic high power factor 0°F ballast instead. See Option -LE.
- 97 Other voltage ballast. Consult factory.
- 98 347 volt 60 Hz. ballast instead. Consult factory for dimming or Q13 electronic.
- 99 Special modification. Consult factory.
- FS Fused. Replaceable. Aids servicing.
- LE With 4-pin electronic lamp for use with Options -39 or -96. 2700°K or consult factory. Specify wattage and color temperature.
- LP With lamp. 2700°K or consult factory. Specify wattage and color temperature. Also see Option -LE.
- OG OptiGroove black seamless tapered aluminum assembly. White trim, self-flanged. (CP x .75)
- RF Radio interference filter. Eliminates line feedback.
- WD Wall dimmer for use with Option -39.

SUBMITTAL DATA

APPROVAL STAMP

JOB NAME _____

TYPE _____

WATTAGE _____ VOLTAGE _____

CATALOG NUMBER _____