

Regressed Lens Compact Triple Tube

Features

Lamp

- Designed for:
 - 1 vertical Triple Tube 26: RR90642.
 - 1 vertical Triple Tube 32: RR90843.
- 4 pin GX24q-3 base.
- 90% lumen output maintained at ballast minimum operating temperature.
- Flicker-free starting, high light output, excellent color rendering (82 CRI).
- High efficiency with low operating costs.
- See Option -43 for lower wattage.

Ballast

- Regulating electronic high power factor, thermally protected, encased. -10°C (13°F) rated. THD is less than 10%.
- Built-in RIF filter.
- 120 volt standard or see optional voltages.
- Dimming optional. (See Option -39)
- Visible and easily serviced in all ceilings.

Fuse

- Available as Option -FS.

Reflector

- Specular Alzak® aluminum.

Trim Assembly

- Seamless tapered black OptiGroove with white flange. Self-flanged trim.
- Regressed prismatic tempered low brightness C#73 spread distribution lens.
- Torsion springs retain snug fit to ceiling.

- White flare trim, flat trim or eggcrate louver available. See Options.
- Anopal, acrylic or polycarbonate lens available. See Options.

Housing

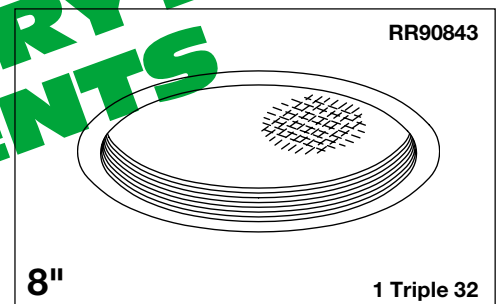
- Acrylic enameled aluminum.
- Cool: Dissipates heat across entire surface area. Ventilated.
- Rustproof: Exceeds 1000 hour ASTM 5% salt spray test.
- Entire luminaire serviced through removable trim assembly.
- Prewired outlet box: 14 GA (NEC) galvanized steel, UL listed. Accessible through fixture opening.
- Built-in plaster frame.

Installation

- 27" hanger bars supplied (2).
- Fully adjustable universal mounting brackets supplied (2).
- Recesses indoor or outdoor in covered locations.
- **UL, C-UL (Canada) Listings**
- Wet, damp or dry locations, covered ceilings.
- Through-branch circuit conductors (6 #12).

Three Year Limited Warranty

- Complete standard fixture.

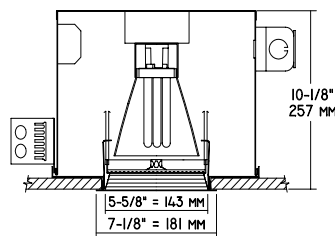


900 Candlepower at Nadir
Dimming Optional

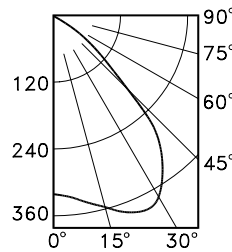
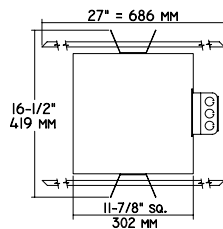
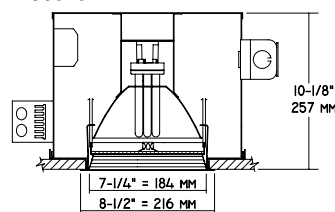
THESE FIXTURES ARE NO LONGER AVAILABLE FOR CONSULTANTS' REPAIRS

Performance at a Glance

RR90642



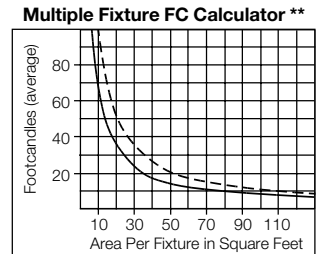
RR90843



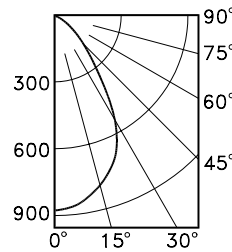
Cone of Light*

Ft.	FC	Dia.
6	8.6	8.7
8	4.8	11.7
10	3.1	14.6
12	2.1	17.5
14	1.6	20.4
16	1.2	23.3

RR90642



RR90642 ——— RR90843 - - - -



Cone of Light*

Ft.	FC	Dia.
6	24.3	5.4
8	13.6	7.2
10	8.7	9.1
12	6.1	10.9
14	4.5	12.7
16	3.4	14.5

RR90843

Cone of Light Key

- Ft. Distance from fixture
- FC Footcandles (average)
- Dia. Circle of light at 50% of FC

* Dia. (in ft.) shown is where FC value is half the FC at nadir.
** Based on RCR2: ceiling 70%; wall 50%; floor 20%. Use S/MH shown for each fixture.

THE KIRLIN COMPANY

3401 EAST JEFFERSON AVENUE • DETROIT, MICHIGAN 48207-4232
(313) 259-6400 • Fax: (313) 259-9409 OR (313) 259-3121

**CENTURY SERIES
ARCHITECTURAL
COMPACT FLUORESCENT LIGHTING**

MAXIMUM WATTAGE

**1 Triple 26
1 Triple 32**

CATALOG NUMBERS

**RR90642
RR90843**

THE KIRLIN COMPANY RESERVES THE RIGHT TO CHANGE, WITHOUT NOTICE, DETAILS OR SPECIFICATIONS IN PRODUCT DESIGN.

Alzak® is a registered trademark of ALCOA.

Detailed Photometry - Installed Fixture

FROM I.T.L. (BOULDER, CO) RR90642: TEST NUMBER 42382
RR90843: TEST NUMBER 42388

RR90642

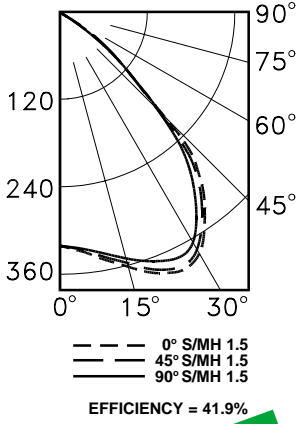
*LER = 24.2
•AEC = \$9.90

CANDLEPOWER DISTRIBUTION

	0.0	22.5	45.0	67.5	90.0
0	308	308	308	308	308
5	314	314	313	313	313
15	352	351	349	346	344
25	382	382	380	374	371
35	338	336	335	330	329
45	188	188	187	185	186
55	73	76	77	78	78
65	25	24	23	23	23
75	4	4	4	4	4
85	0	0	0	0	0
90	0	0	0	0	0

COEFFICIENTS OF UTILIZATION

RF	20						
	80			50			
	RW	70	50	30	10	50	30
1	47	45	44	43	43	42	41
2	44	41	39	37	39	37	36
3	41	37	34	32	35	33	31
4	38	34	31	28	32	30	28
5	35	31	27	25	29	27	25
6	33	28	25	22	27	24	22
7	30	26	23	20	25	22	20
8	28	23	20	18	23	20	18
9	27	22	19	16	21	18	16
10	25	20	17	15	19	17	15



*AEC = Lumenaire Efficiency x Recession Factor x Annual Energy Cost per
lumens (based on 10000 hours use @ 0.08 AEC).

RR90843

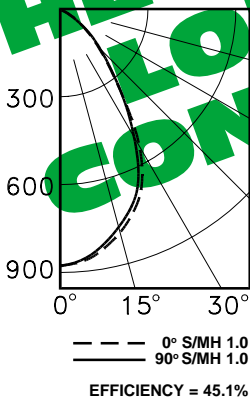
*LER = 27.9
•AEC = \$8.61

CANDLEPOWER DISTRIBUTION

	0.0	22.5	45.0	67.5	90.0
0	873	873	873	873	873
5	858	858	856	855	855
15	770	764	755	755	757
25	616	609	598	597	601
35	388	387	385	385	391
45	189	191	185	187	190
55	79	81	85	88	87
65	36	37	36	34	35
75	10	11	11	10	10
85	0	0	0	0	0
90	0	0	0	0	0

COEFFICIENTS OF UTILIZATION

RF	20						
	80			50			
	RW	70	50	30	10	50	30
1	51	49	48	47	46	45	44
2	47	45	43	41	43	41	39
3	44	41	38	36	39	37	35
4	42	38	35	32	36	34	32
5	39	35	31	29	33	31	29
6	37	32	29	27	31	28	26
7	35	30	26	24	29	26	24
8	33	28	24	22	27	24	22
9	31	26	23	21	25	22	21
10	29	24	21	19	24	21	19



Options

- 13 Clear 1/8" flat polycarbonate below, with tempered prismatic flat C#73 lens above.
- 14 Drop opal glass instead (RR90642).
- 17 Prismatic 3/16" high-strength acrylic instead.
- 18 Anopal flat glass. Not enameled. Diffusing.
- 20 White 1/2" cube eggcrate aluminum louver.
- 21 White translucent flat polycarbonate instead.
- 32 Trim extender. Broadens trim flange O.D. by 1" to cover larger ceiling opening.
- 39 Installed electronic dimming ballast for 32 watt. Consult factory for 18 or 26 watt or for quantity and type required. Also see Options -LE and -WD. Indoor use.
- 40 White grooveless flare trim with regressed tempered C#73 or specify optional lens.
- 43 Lower wattage triple tube: Specify 1-18 watt (RR90642); 1-18 or 1-26 watt (RR90843).
- 45 Gasket above trim flange (between trim and ceiling).
- 46 Gasket between trim and lens.
- 58 277 volt 60 Hz. ballast instead.
- 73 Internal emergency "Ni-Cad" battery pack concealed in housing. Switch and visible light located above lens. For indoor use.
- 76 Drop white polycarbonate diffuser instead for RR90642 only.
- 82 Sloped ceiling adapter. Specify slope up to 30° in 5° increments.
- 94 Custom color trim assembly. Consult factory.
- 97 Other voltage ballast. Consult factory.
- 98 347 volt 60 Hz. ballast instead. Consult factory for dimming.
- 99 Special modification. Consult factory.
- CW Cold weather electronic HPF ballast. -18°C to -20°C (0°F to -5°F).
- FR Fresnel tempered lens. Concentric prisms.
- FS Fused. Replaceable. Aids servicing.
- FT Flat white trim instead. With tempered prismatic C#73 lens or specify optional lens.
- LE With 4-pin electronic Triple Tube amalgam lamp. 82 CRI and 10,000 hour life. 3500°K or consult factory for 2700°K, 3000°K, 4100°K. Specify wattage and color temperature.
- WD Wall Dimmer for use with Option -39. Consult factory for use with 18 or 26 watt.

SUBMITTAL DATA

APPROVAL STAMP

JOB NAME _____

TYPE _____

WATTAGE _____ VOLTAGE _____

CATALOG NUMBER _____

LIMITED WARRANTY: CATALOGUED KIRLIN FIXTURES ARE WARRANTED FREE OF DEFECTS IN WORKMANSHIP OR MATERIAL FOR THREE YEARS FROM DATE OF PURCHASE. INSTALLATION, ETC., IS NOT NORMAL USE. Manufacturer at his option will replace or repair such fixture or refund the purchase price on presentation of proof of purchase and defective fixture at the office of manufacturer within the years of original shipment. Liability of manufacturer is limited to the foregoing, and manufacturer shall not be liable for any other damages, direct or indirect, sustained or suffered by purchaser or any person. This warranty is supplied on the understanding that all other warranties, expressed or implied, shall not in any way be construed to modify, impair, or extend this warranty. Seller does not warrant as to merchantability or fitness for a particular use, nor liability or statement constitute a warranty or amend this specific warranty. Abnormal use, abuse of the fixture, improper installation, or repair, or modification of the fixture without prior written authorization from the manufacturer will void the warranty.